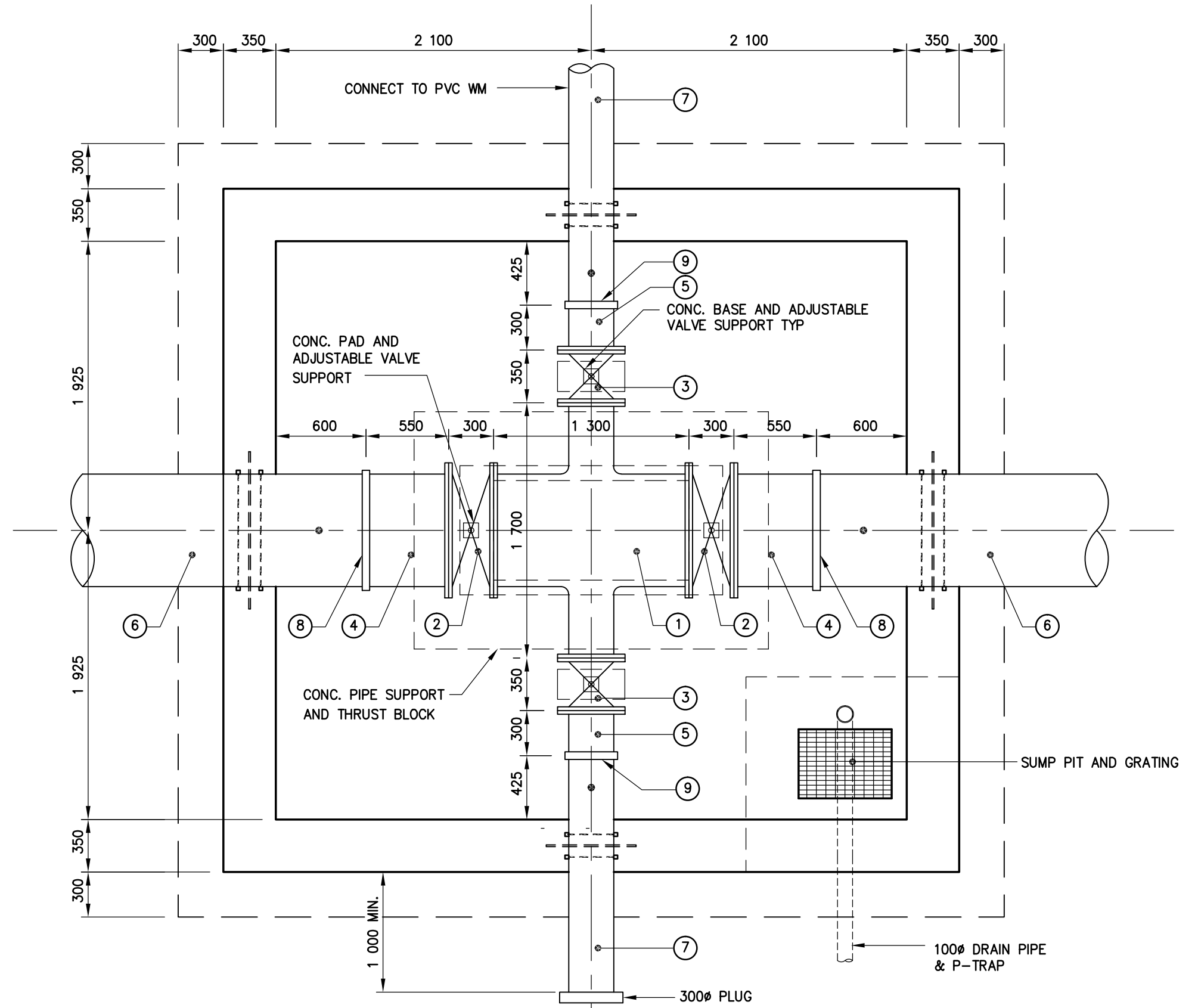


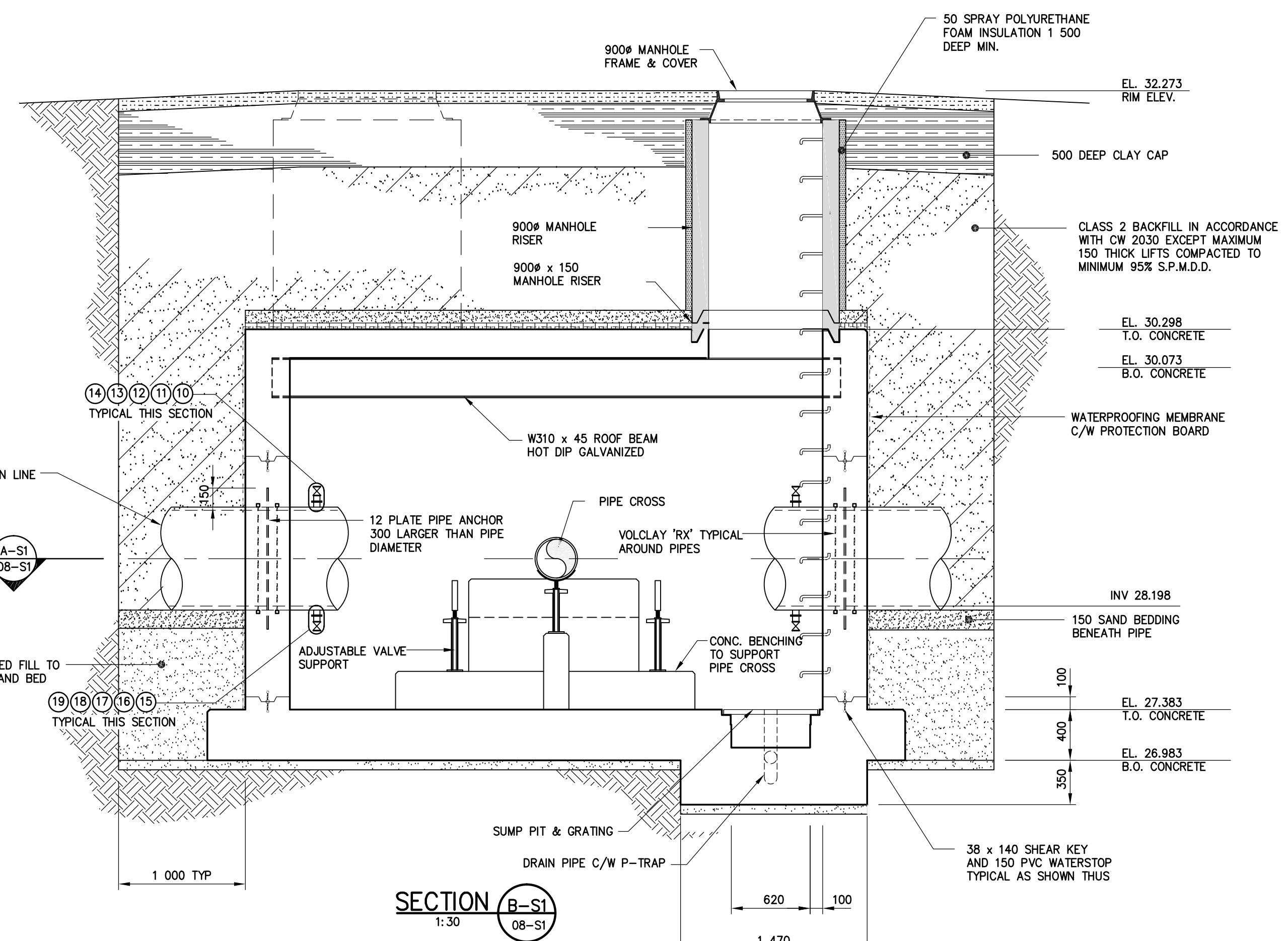
**ROOF PLAN**  
1:30



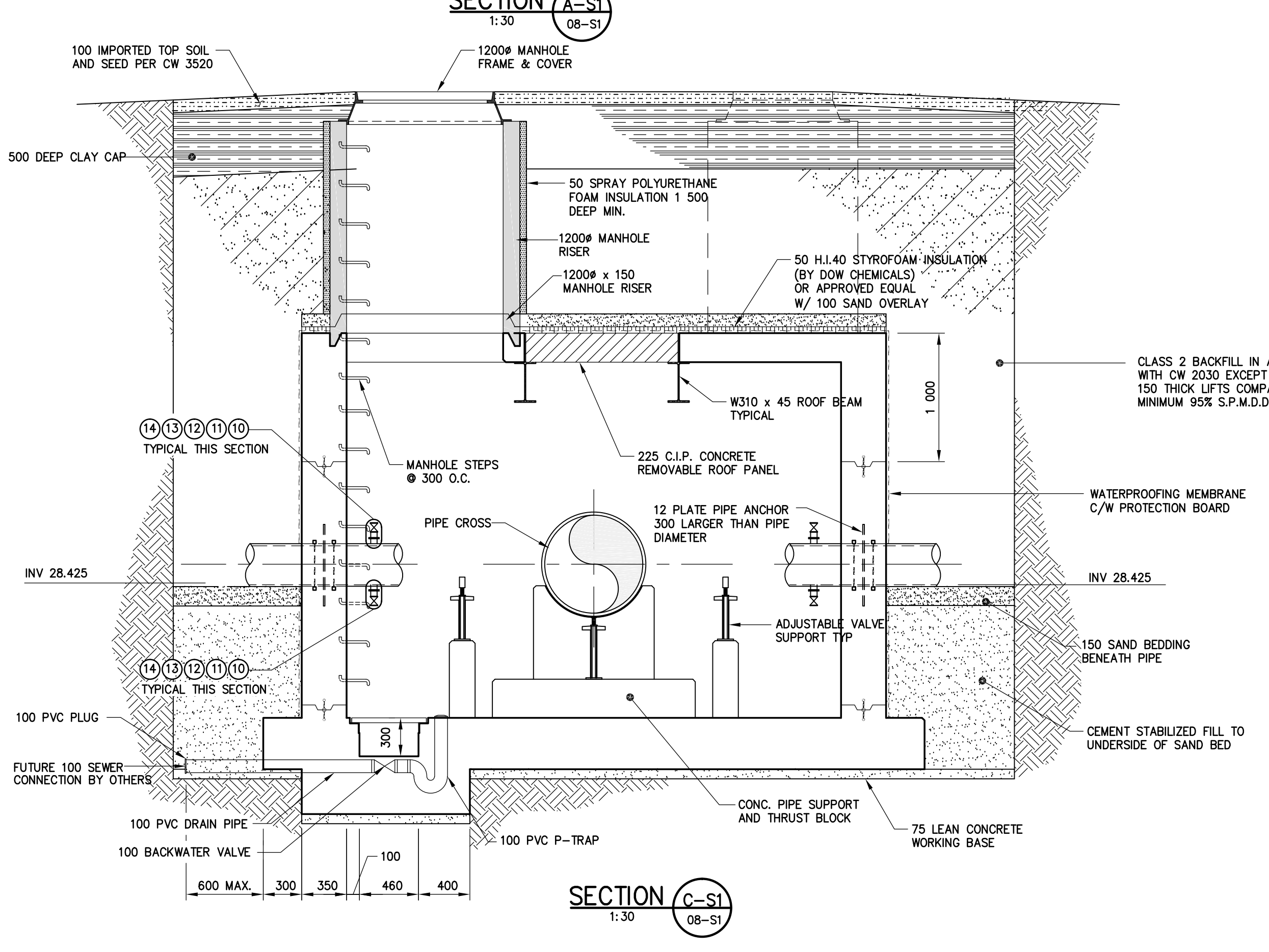
**SECTION A-S1**  
1:30

MATERIAL LIST			
ITEM	DESCRIPTION	QUANTITY	LENGTH
1.	750 x 750 x 300 x 300 CROSS (FLANGED)	1	1300
2.	750mm AWWA C504 BUTTERFLY VALVE (FL x FL) c/w MANUAL ACTUATOR	2	300
3.	300mm AWWA C509 GATE VALVE (FL x FL)	2	350
4.	750 SPOOL PIECE (FL x VIC-44)	2	TO SUIT
5.	300 SPOOL PIECE (FL x VIC-44)	2	TO SUIT
6.	750 WALL PIECE (VIC-44 x MAINLINE PIPE CONNECTION) c/w THRUST FLANGE AND 50 NPT OUTLET TOP AND 75 NPT OUTLET BOTTOM	2	TO SUIT
7.	300 WALL PIECE (VIC-44 x PE) c/w THRUST FLANGE AND 50 NPT OUTLET (TOP AND BOTTOM)	2	TO SUIT
8.	750 VICTAULIC STYLE 44 COUPLING	2	
9.	300 VICTAULIC STYLE 44 COUPLING	2	
10.	50 SCHEDULE 80 STEEL NIPPLE (THREADED)	6	
11.	50 STEEL FLANGE CLASS 125 (THREADED) c/w ISOLATION KIT	6	
12.	50 CAST BRONZE OR BRASS FLANGE (THREADED)	6	
13.	50 CAST BRONZE OR BRASS NIPPLE (THREADED)	6	
14.	50 BRONZE GATE VALVE (THREADED)	6	
15.	75 SCHEDULE 80 STEEL NIPPLE (THREADED)	2	
16.	75 STEEL FLANGE CL. 125 (THREADED) c/w ISOLATION KIT	2	
17.	75 CAST BRONZE OR BRASS FLANGE (THREADED)	2	
18.	75 CAST BRONZE OR BRASS NIPPLE (THREADED)	2	
19.	75 BRONZE GATE VALVE (THREADED)	2	

NOTES:  
CHAMBER FITTINGS TO BE AWWA C110 DUCTILE IRON OR STEEL  
CHAMBER PIPING TO BE AWWA C151 CLASS 54 D.I., AWWA C200 STEEL OR AWWA C301 PCCP



**SECTION B-S1**  
1:30



**SECTION C-S1**  
1:30



NOTE:  
These design documents are prepared solely for the use by the party with whom the design professional has entered into a contract and there are no representations of any kind made by the design professional to any party with whom the design professional has not entered into a contract.

A-B  
C  
A = DETAIL/SECTION No.  
B = DRAWING WHERE SHOWN  
C = DRAWING WHERE TAKEN

**APEGM**  
Certificate of Authorization  
MMM Group Limited  
No. 4531 Date: June 14, 2010

**METRIC**  
WHOLE NUMBERS INDICATE MILLIMETRES  
DECIMALIZED NUMBERS INDICATE METRES

DESIGNED BY: EH		CHECKED BY: -	
DRAWN BY: RCS		APPROVED BY: -	
HOR. SCALE: AS SHOWN		RELEASED FOR CONSTRUCTION: -	
VERTICAL: AS SHOWN		DATE: -	
1	ISSUED FOR TENDER	10.06.14	EH
NO.	REVISIONS	DATE	BY

**MMM GROUP**  
MMM Group Limited  
Suite 111 - 93 Lombard Ave.  
Winnipeg, MB R3B 3B1  
T. 204.943.3178  
F. 204.943.4948  
www.mmm.ca

ENGINEER'S SEAL  
**E. HO**  
Member  
22317  
REGISTERED PROFESSIONAL ENGINEER

**THE CITY OF WINNIPEG**  
WATER AND WASTE DEPARTMENT  
2010 FEEDERMAIN INSTALLATION  
AND ASSOCIATED WORKS  
**BISON DRIVE**  
OFFTAKE VALVE CHAMBER  
CONCRETE DETAILS 1 OF 2

CONSULTANT DRAWING NUMBER: 550911-S1  
SHEET: 8 OF 10  
CITY DRAWING NUMBER: D12119

Jun 11, 2010 - 11:06am  
 P:\550911-000\550911-000\550911-000\WasteWater\Chamber\MM\Drawings\550911-000\concrete SK1 100507 rcs.dwg - tab:concrete (S1)