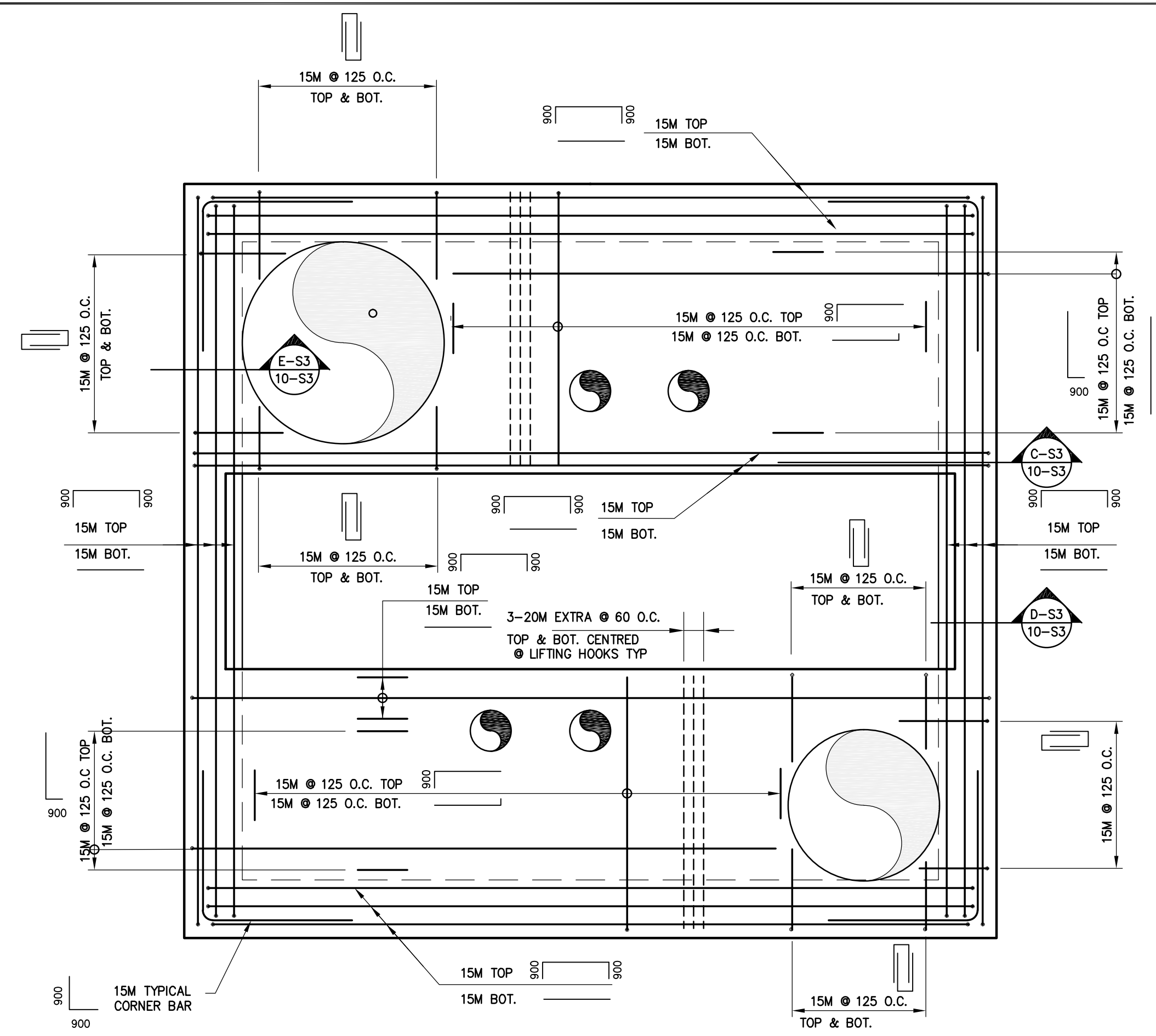
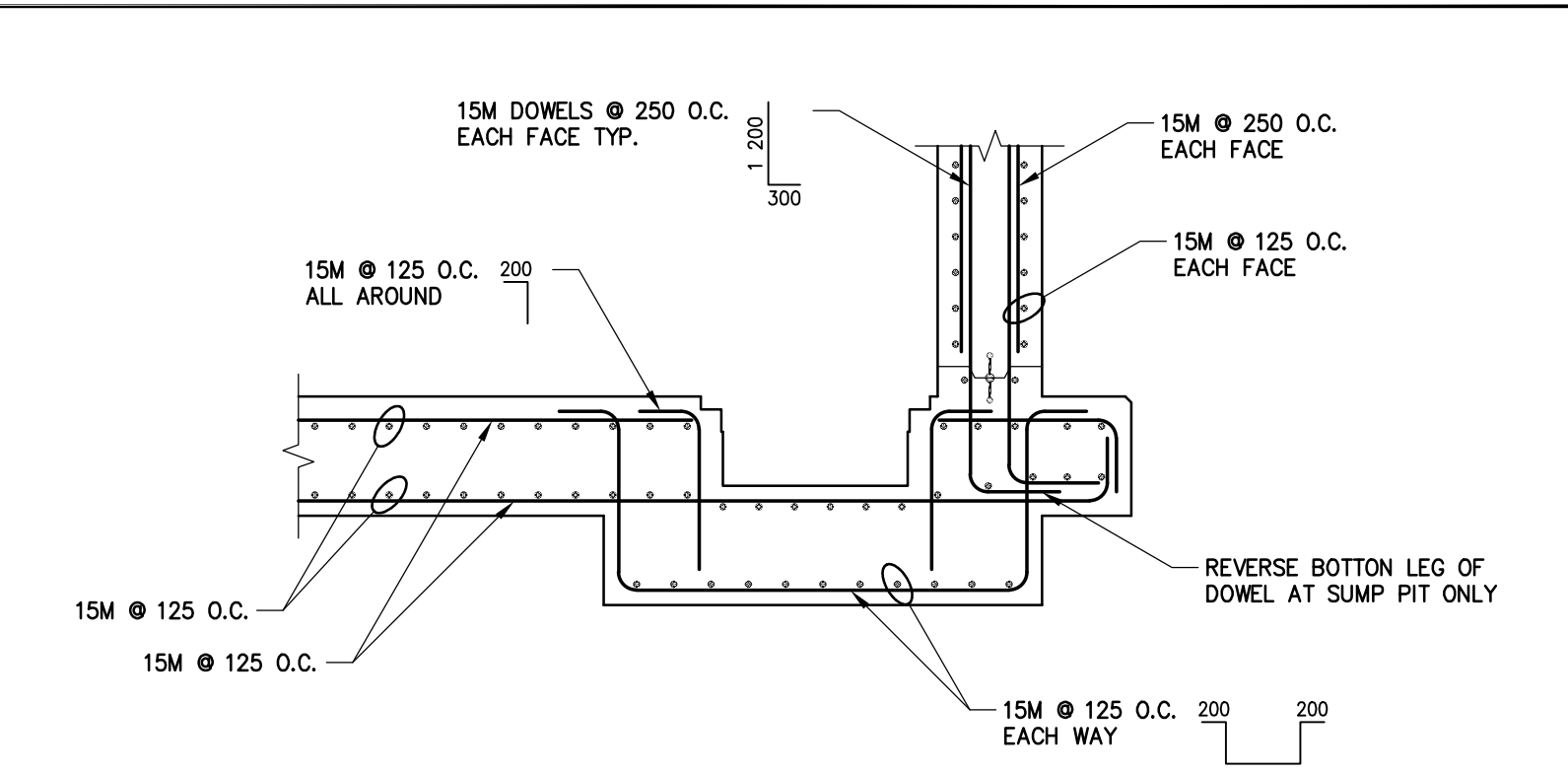


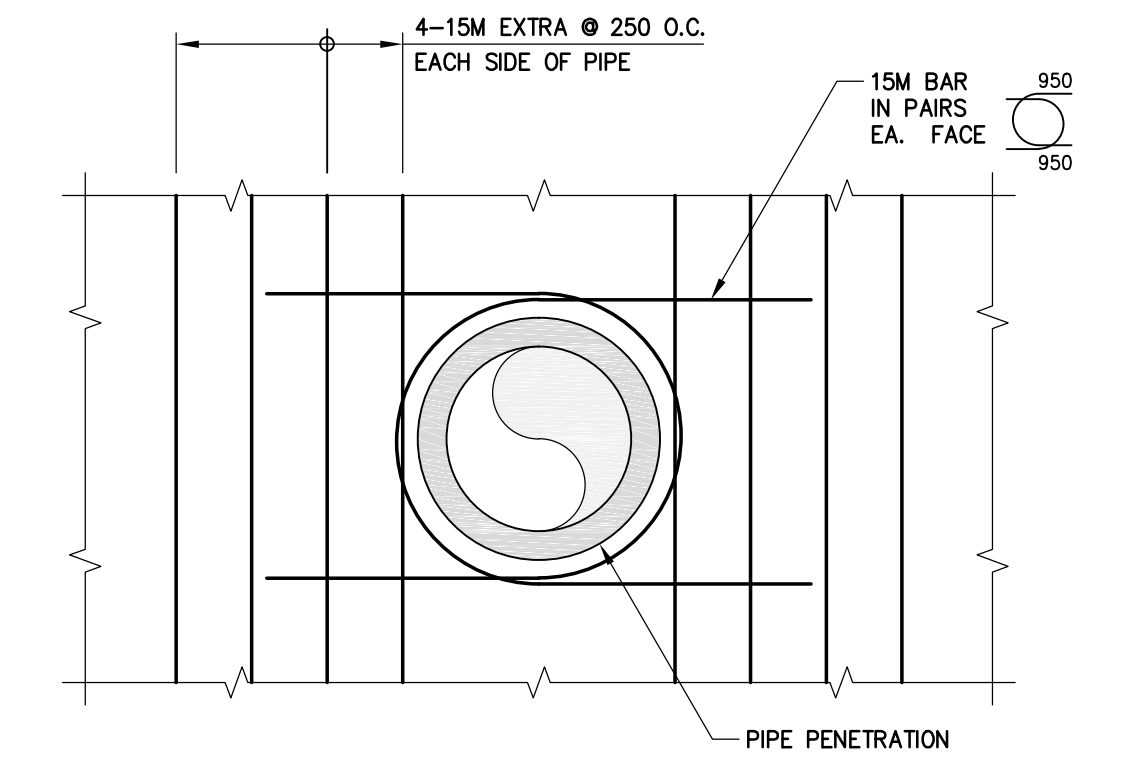
**SECTION A-S3**  
1:25



**ROOF SLAB REINFORCING LAYOUT**  
1:25

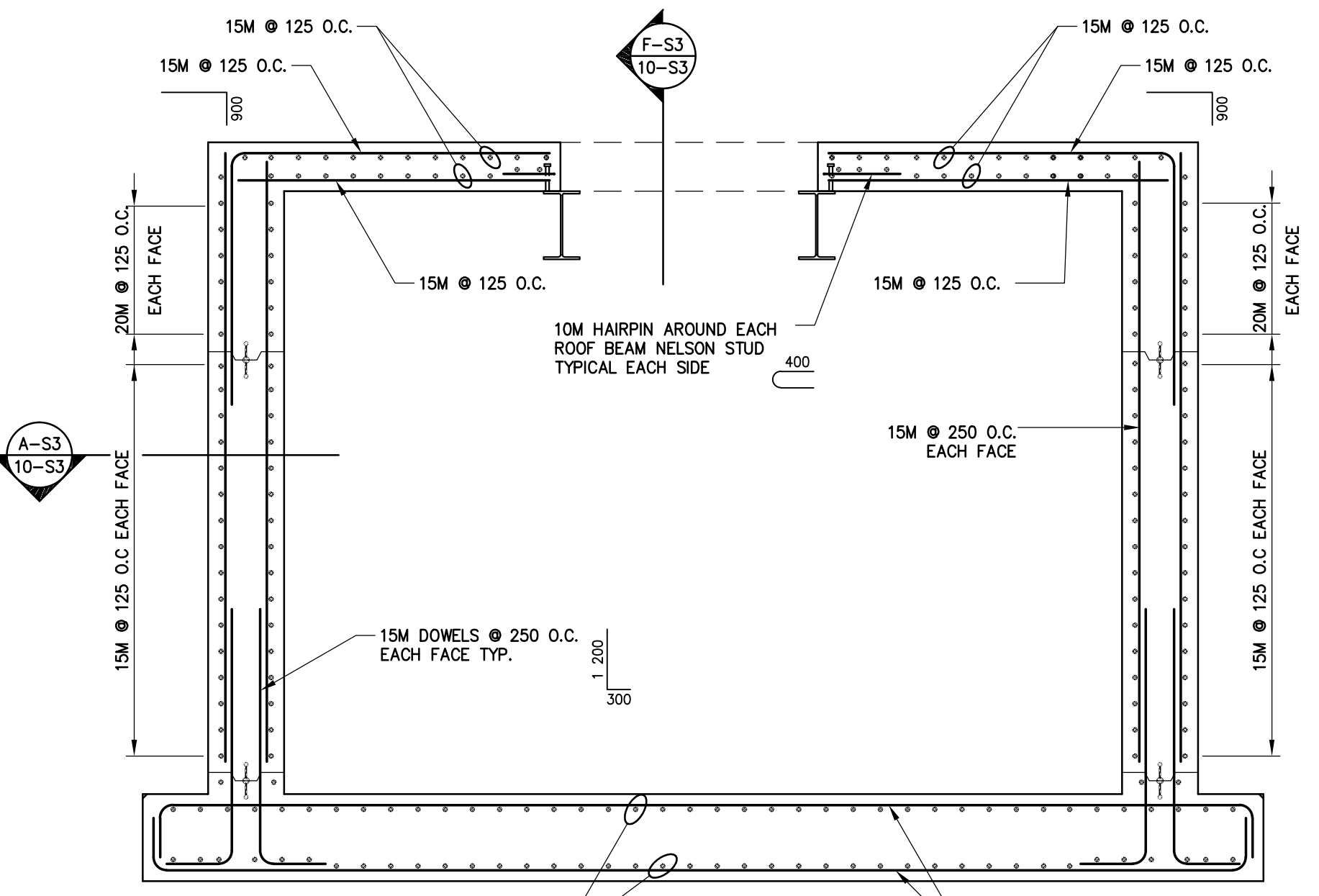


**SECTION THROUGH SUMP PIT**  
1:25

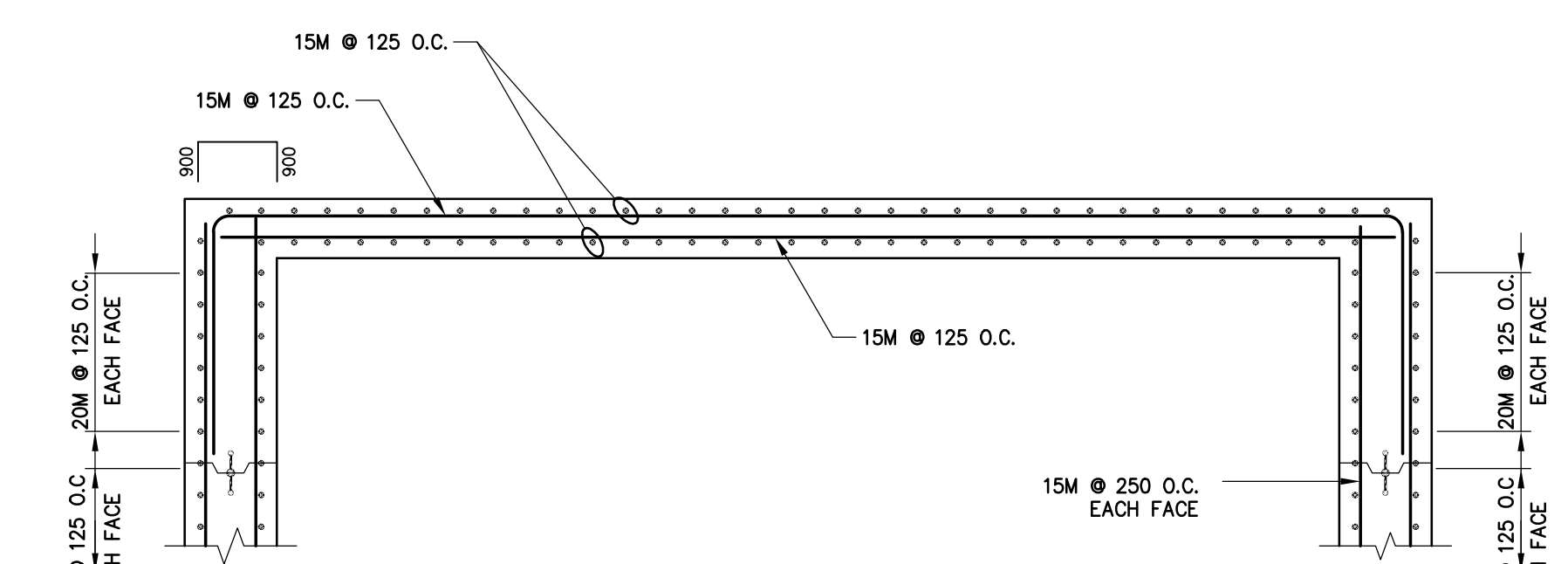


**ELEVATION 1-S3**  
1:25

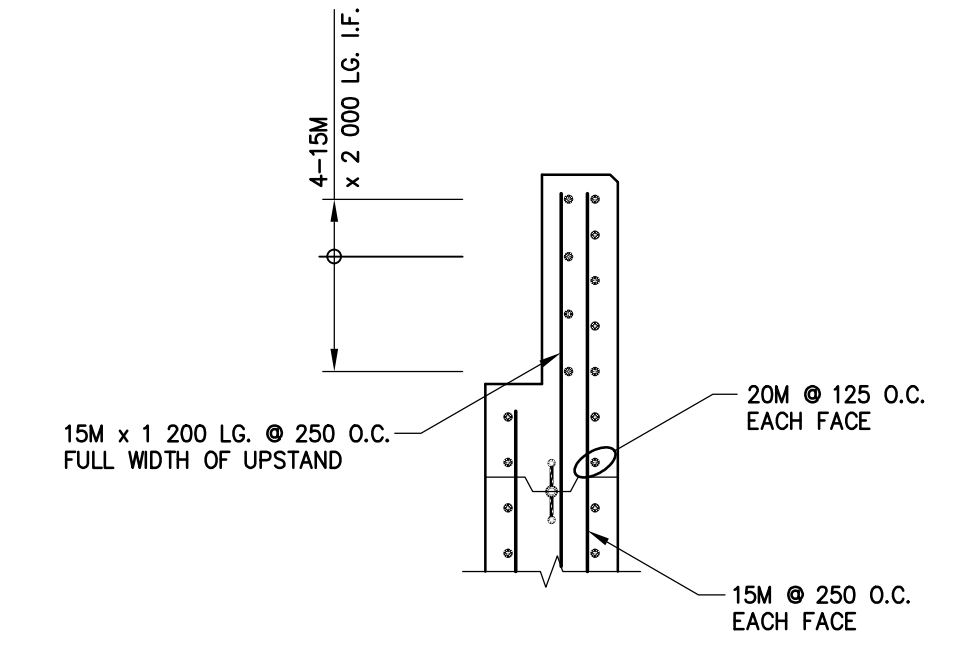
NOTE:  
STANDARD WALL REINFORCING  
NOT SHOWN FOR CLARITY.



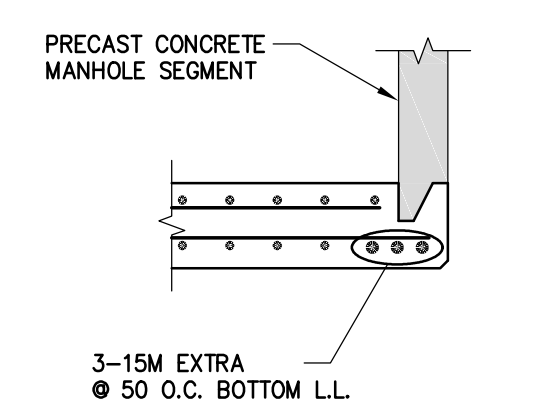
**SECTION B-S3**  
1:25



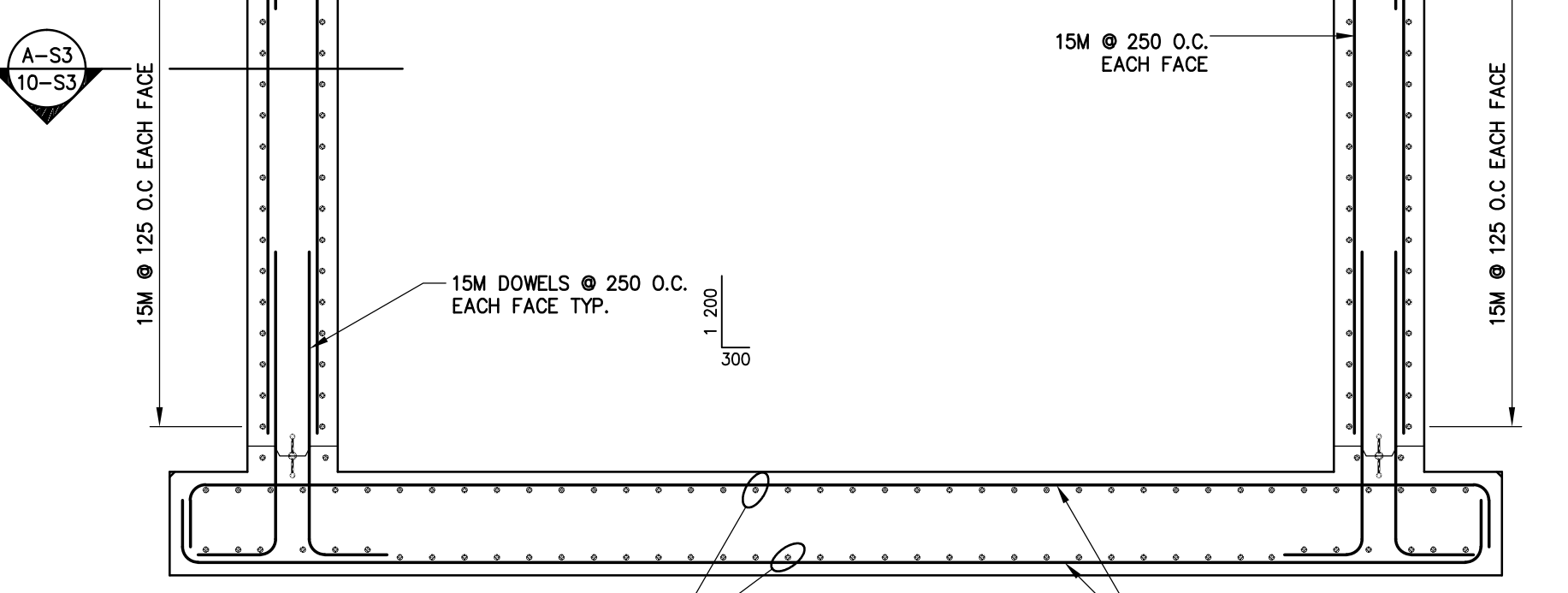
**SECTION C-S3**  
1:25



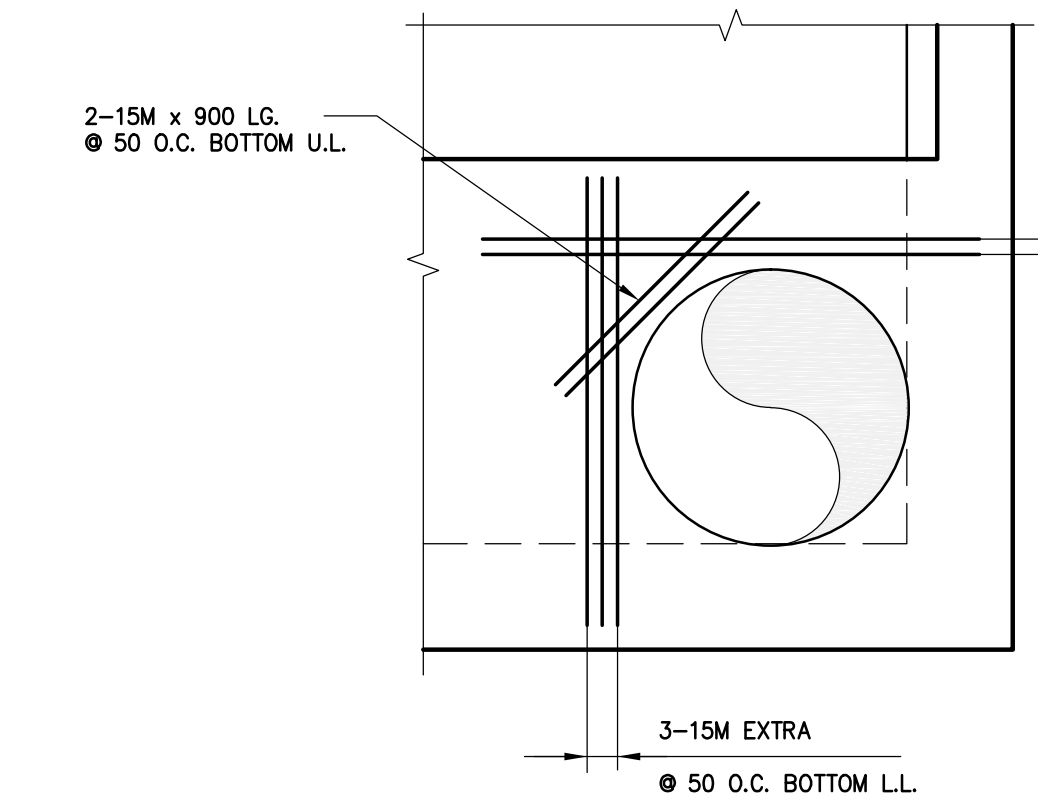
**SECTION D-S3**  
1:20



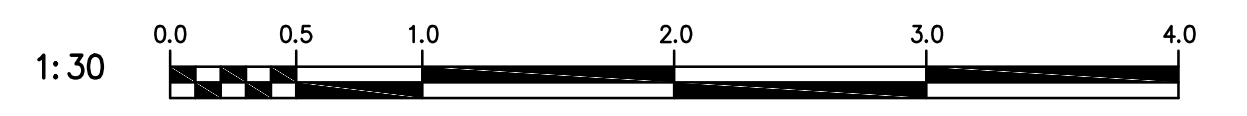
**SECTION E-S3**  
1:20



**SECTION F-S3**  
1:20



**TYPICAL REINFORCING AROUND MANHOLE**  
1:25



NOTE:  
These design documents are prepared solely for the use by the party with whom the design professional has entered into a contract and there are no representations of any kind made by the design professional to any party with whom the design professional has not entered into a contract.

A-B C  
A = DETAIL/SECTION No.  
B = DRAWING WHERE SHOWN  
C = DRAWING WHERE TAKEN

**APEGM**  
Certificate of Authorization  
MMM Group Limited  
No. 4531 Date: June 14, 2010

**METRIC**  
WHOLE NUMBERS INDICATE MILLIMETRES  
DECIMALIZED NUMBERS INDICATE METRES

DESIGNED BY: EH		CHECKED BY: GK	
DRAWN BY: RCS		APPROVED BY: JPL	
HOR. SCALE: AS SHOWN		RELEASED FOR CONSTRUCTION: DATE	
VERTICAL SCALE: AS SHOWN		DATE	
NO.	ISSUED FOR TENDER	DATE	BY
1	ISSUED FOR TENDER	10.06.14	EH
NO. REVISIONS			

**MMM GROUP**  
MMM Group Limited  
Suite 111 - 93 Lombard Ave.  
Winnipeg, MB R3B 3B1  
t. 204.943.3178  
f. 204.943.4948  
www.mmm.ca

ENGINEER'S SEAL  
PROVINCE OF MANITOBA  
E. HO  
Member  
22317  
REGISTERED PROFESSIONAL ENGINEER

**THE CITY OF WINNIPEG**  
WATER AND WASTE DEPARTMENT  
Winnipeg

2010 FEEDERMAIN INSTALLATION  
AND ASSOCIATED WORKS  
**BISON DRIVE**  
OFFTAKE VALVE CHAMBER  
REINFORCING DETAILS

CONSULTANT DRAWING NUMBER  
5509111-S3  
SHEET 10 OF 10  
CITY DRAWING NUMBER  
D12121

Apr 11, 2010 - 11:15am  
P:\5509111-000\Winnipeg West Valve Chamber\MMM Drawings\5509111-concrete SK1 100507 rcs.dwg - rcs\Reinforcement (S3)