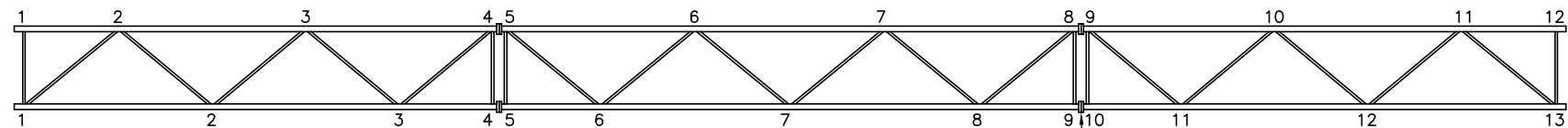
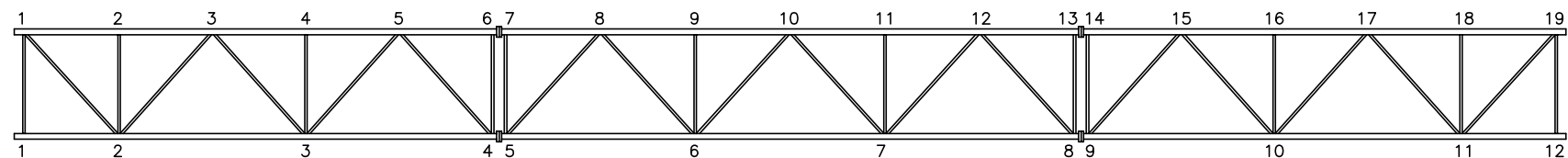


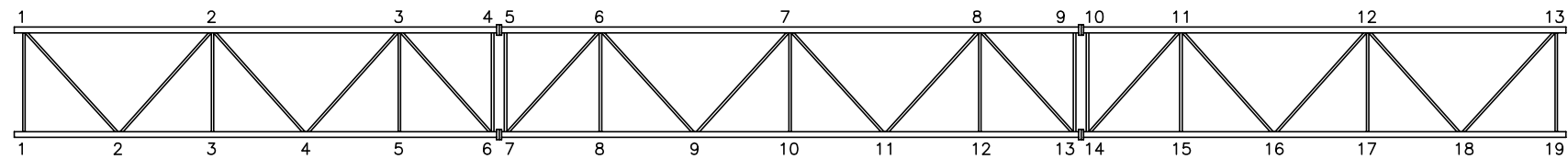
FRONT ELEVATION
1:50 (LOOKING NORTH)



FRONT FACE
1:50

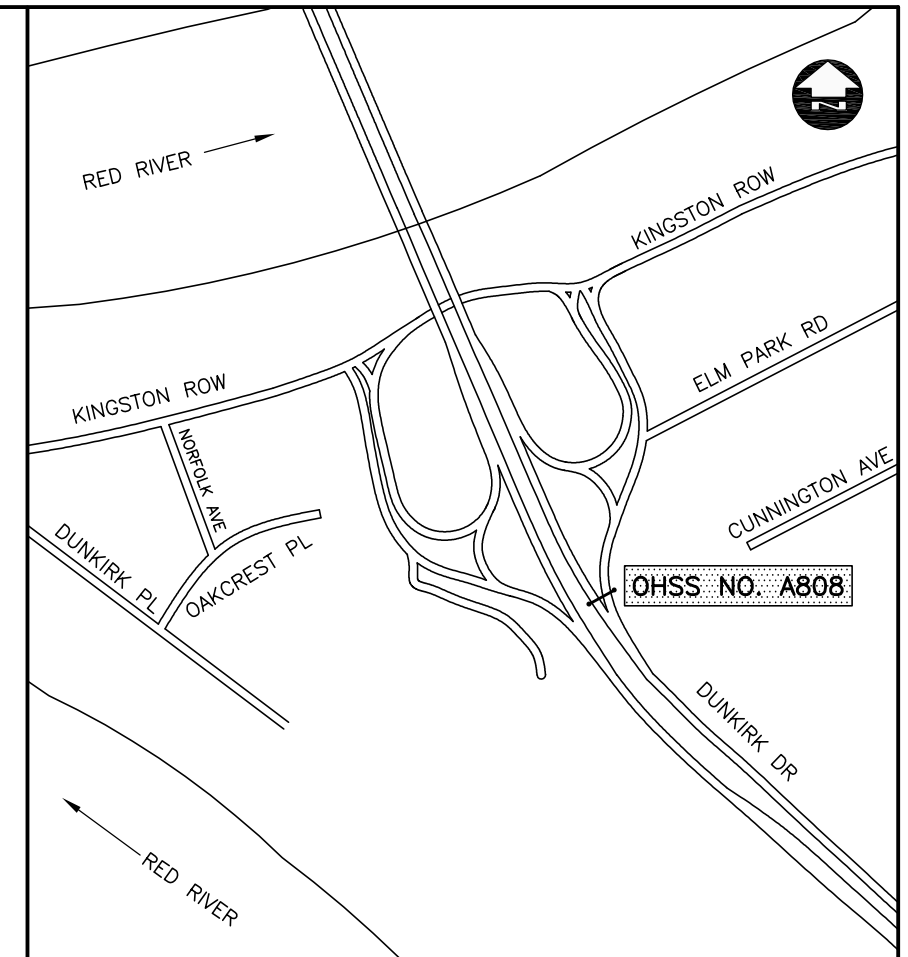


TOP FACE
1:50

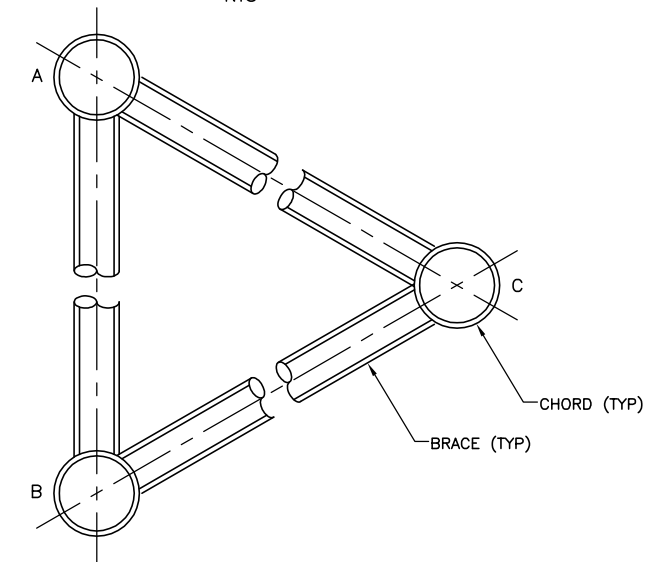


BOTTOM FACE
1:50

PLAN OF HORIZONTAL TRI-CHORD TRUSS



SITE PLAN
NTS



A SECTION
NTS

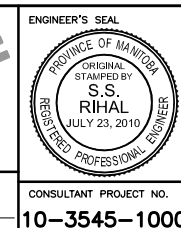
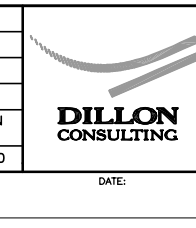
NOTE:
EXISTING EXTRUDED ALUMINUM STRUCTURAL MEMBERS - AA6061-T6 ALLOY

HISTORY OF STRUCTURE:

MANUFACTURER - SHOPOST IRONWORKS
DATE OF ORIGINAL INSTALLATION - 1965
DATE OF RELOCATION - N/A
ORIGINAL LOCATION - AS SHOWN
DATE OF REFURBISHMENT - 1983
COMMENTS - N/A

B.M. ELEV.	NO.	REVISIONS	DATE	BY
	1	ISSUED FOR TENDER	07/23/10	JGW

DESIGNED BY: RJT	DATE: JULY 2010
DRAWN BY: JGW	AUTHORIZED BY:
CHECKED BY: SSR	DATE:
APPROVED BY:	
SCALE: HORZ. AS SHOWN	
VERT.:	



THE CITY OF WINNIPEG
PUBLIC WORKS DEPARTMENT

ALUMINUM OVERHEAD SIGN SUPPORT STRUCTURES - 2010 MAINTENANCE WORKS

808 DUNKIRK DRIVE N/B, SOUTH OF BRIDGE, KINGSTON ROW EXIT

CITY DRAWING NUMBER
OHSS-10-04
SHEET 4 OF 9

CONSULTANT PROJECT NO.
10-3545-1000