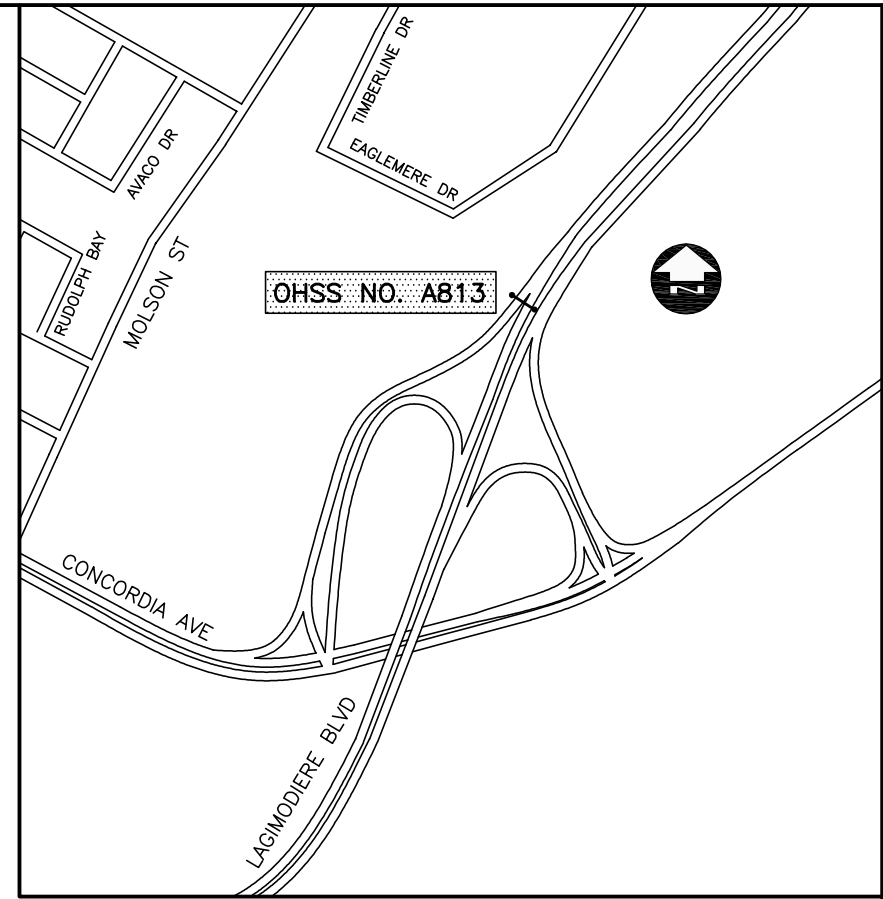
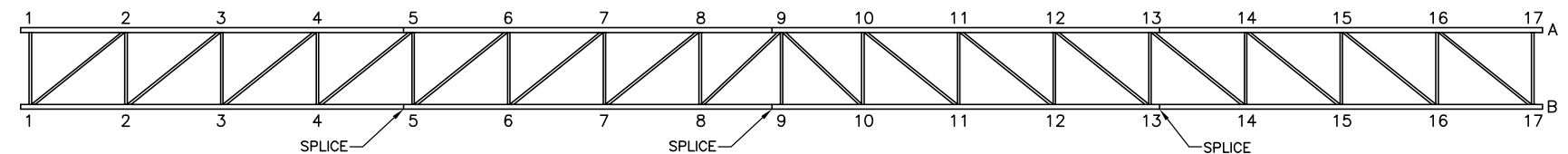


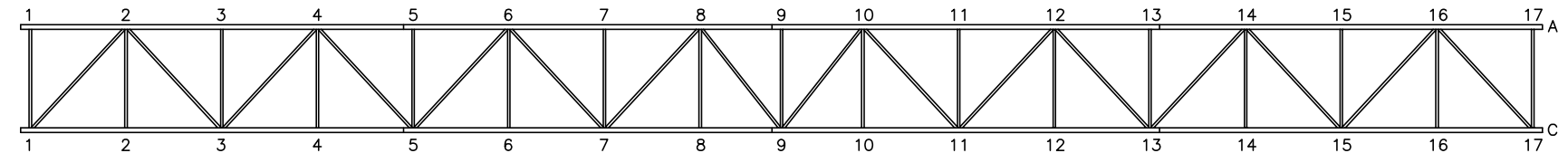
FRONT ELEVATION
1:50 (LOOKING SOUTH)



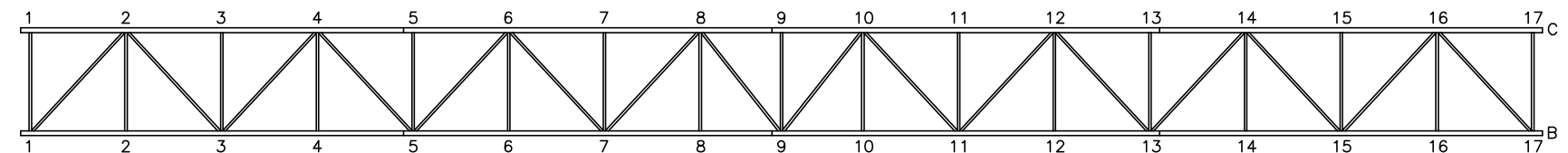
SITE PLAN
NTS



FRONT FACE
1:50

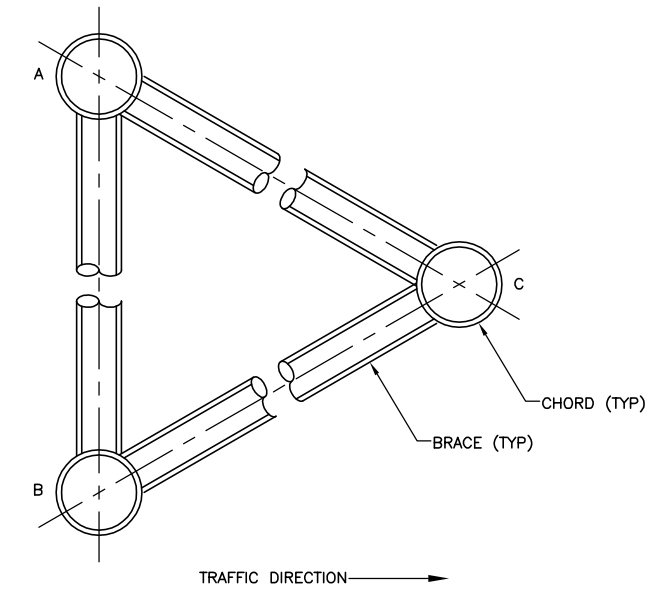


TOP FACE
1:50



BOTTOM FACE
1:50

PLAN OF HORIZONTAL TRI-CHORD TRUSS



SECTION A-A
NTS

NOTE:
EXISTING EXTRUDED ALUMINUM STRUCTURAL MEMBERS - AA6061-T6 ALLOY

HISTORY OF STRUCTURE:

MANUFACTURER - SHOPOST IRONWORKS
DATE OF ORIGINAL INSTALLATION - 1970
DATE OF RELOCATION - N/A
ORIGINAL LOCATION - AS SHOWN
DATE OF REFURBISHMENT - 1983
COMMENTS - ALL SPLICES ARE BUTT-WELDED TOGETHER.

B.M. ELEV.	NO.	REVISIONS	DATE	BY
	1	ISSUED FOR TENDER	07/23/10	JGW

DESIGNED BY: RJT
DRAWN BY: JGW
CHECKED BY: SSR
APPROVED BY:
SCALE: HORZ. AS SHOWN
VERT.
DATE: JULY 2010
AUTHORIZED BY:
DATE:



THE CITY OF WINNIPEG
PUBLIC WORKS DEPARTMENT

ALUMINUM OVERHEAD SIGN SUPPORT STRUCTURES - 2010 MAINTENANCE WORKS

CITY DRAWING NUMBER: **OHSS-10-06**
SHEET **6** OF **9**

10-3545-1000

743 LAGIMODIERE BOULEVARD S/B, NORTH OF OVERPASS, CONCORDIA AVENUE EXIT