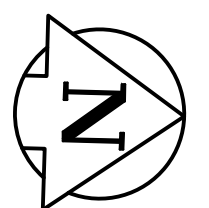
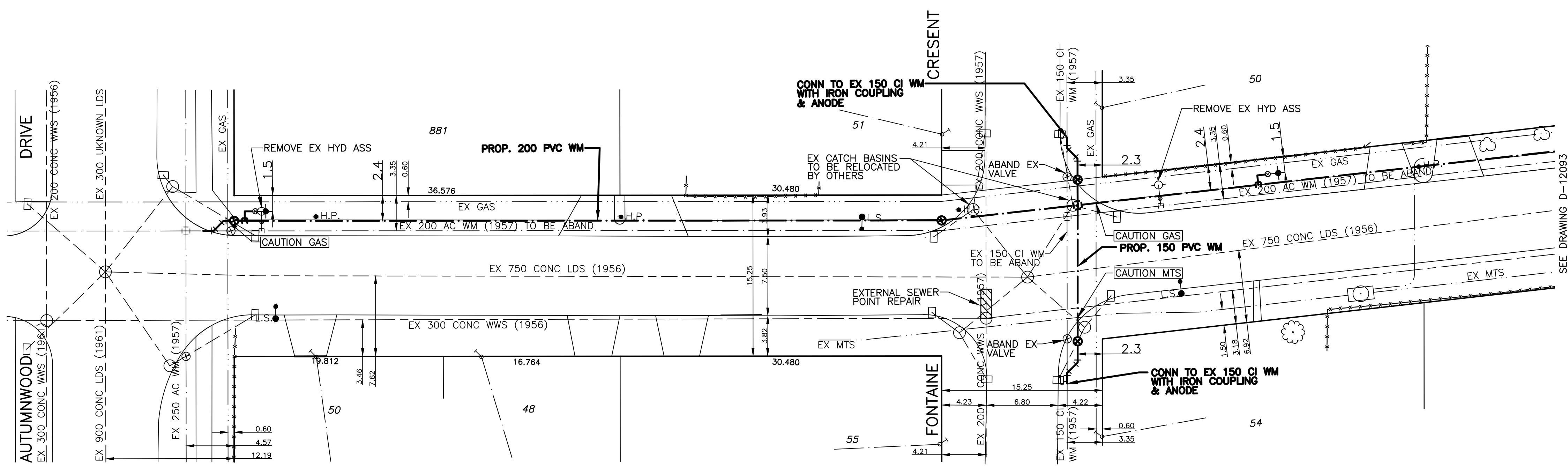


HOUSE WATER SERVICE INFORMATION				
ADDRESS & NATURE OF SERVICE	SIZE (mm) & TYPE	SHORT & LONG MEASUREMENT	CORP LOCATION	REMARKS
48 De Mourmont Avenue Residential	19 Copper	1.4 LR CR OF HSE		DR/WY A408 SEWER/56
50 De Mourmont Avenue Residential	19 Copper	3.2 LR CR OF HSE		SEWER/56

CHAINAGE ALONG WEST PROPERTY LINE OF DE BOURMONT AVENUE  
DE BOURMONT AVENUE



- NOTES:**
- ALL GATE VALVES ARE COUNTER-CLOCKWISE TO OPEN WITH A BLACK OPERATING NUT.
  - WATERMAIN TO BE INSTALLED BY TRENCHLESS METHODS.
  - BACKFILL IS CLASS 5 WITHIN BOULEVARD AND CLASS 3 WHEN WITHIN PAVEMENT/SIDEWALK OR WHEN WITHIN 1.0m OF PAVEMENT OR SIDEWALK.
  - WATER SERVICES ARE 19mm UNLESS OTHERWISE NOTED.
  - MINIMUM COVER TO TOP OF WATERMAIN SHALL BE 2.4m.
  - LOCATION OF ALL SERVICES TO BE CONFIRMED IN FIELD.
  - EXPOSE EXISTING WATERMAIN TO CONFIRM DEPTH PRIOR TO CONSTRUCTION.
  - ALL LEAD SERVICES TO BE RENEWED TO PROPERTY LINE.
  - SERVICES TO BE RENEWED SHALL BE REPLACED FROM WATERMAIN TO PROPERTY LINE. ALL OTHERS TO BE RECONNECTED.



SEE DRAWING D-12093

WATERMAIN		REDUCER		WATERMAIN	
EXISTING	PROPOSED	EXISTING	PROPOSED	EXISTING	PROPOSED
Hydrant Valve	Hydrant Valve	150mm W.W.	150mm W.W.	150mm W.W.	150mm W.W.
Land Drainage Sewer	Land Drainage Sewer	300mm L.D.S.	300mm L.D.S.	300mm L.D.S.	300mm L.D.S.
Waste Water Sewer	Waste Water Sewer	250mm W.W.S.	250mm W.W.S.	250mm W.W.S.	250mm W.W.S.
Manhole	Manhole	Gas	Gas	Waste Water Sewer	Waste Water Sewer
Catch Basin	Catch Basin	Hydro	Hydro	Junctions	Junctions
Curb Stop	Curb Stop	M.T.S.	M.T.S.	Culvert	Culvert
Tee	Tee	C.B. Lead	C.B. Lead		
Bend	Bend	Survey Bar	Survey Bar		
Anode	Anode	Tree	Tree		
		H.P.	H.P.		
		Lamp Standard	Lamp Standard		

LOCATION APPROVED	
SUPV. U/G STRUCTURES	DATE

NOTE:  
LOCATION OF UNDERGROUND STRUCTURES AS SHOWN ARE BASED ON THE BEST INFORMATION AVAILABLE BUT NO GUARANTEE IS GIVEN THAT ALL EXISTING UTILITIES ARE SHOWN OR THAT THE GIVEN LOCATIONS ARE EXACT. CONFIRMATION OF EXISTENCE AND EXACT LOCATION OF ALL SERVICES MUST BE OBTAINED FROM THE INDIVIDUAL UTILITIES BEFORE PROCEEDING WITH CONSTRUCTION.

B.M. ELEV. CWM 55-007 231.996

**GENIVAR**  
10 PRAIRIE WAY WINNIPEG, MANITOBA R2J 3J8  
PH: (204)-477-6650 FAX: (204)-474-2864

DESIGNED BY	PR	CHECKED BY	SM
DRAWN BY	PR	APPROVED BY	IMcK
HOR. SCALE:	1:250	RELEASED FOR CONSTRUCTION	ORIGINALLY SIGNED BY
VERT. SCALE:	1:50		K. ZUREK P. ENG
DATE	JUNE 2010	DATE	JUNE 16, 2010

ENGINEERS SEAL

**I. G. MCKINNON**  
REGISTERED PROFESSIONAL ENGINEER

CONSULTANT DRAWING NO. 010-151-01

WHOLE NUMBERS INDICATE MILLIMETRES  
DECIMALIZED NUMBERS INDICATE METRES

**THE CITY OF WINNIPEG**  
WATER AND WASTE DEPARTMENT

**2010 CAPITAL WORKS**  
WATERMAIN RENEWALS  
DE BOURMONT AVENUE  
AUTUMNWOOD DRIVE TO  
43M NORTH OF FONTAINE CRESCENT (SOUTH LEG)

SHEET 1 OF 3  
CITY DRAWING NO. D-12092