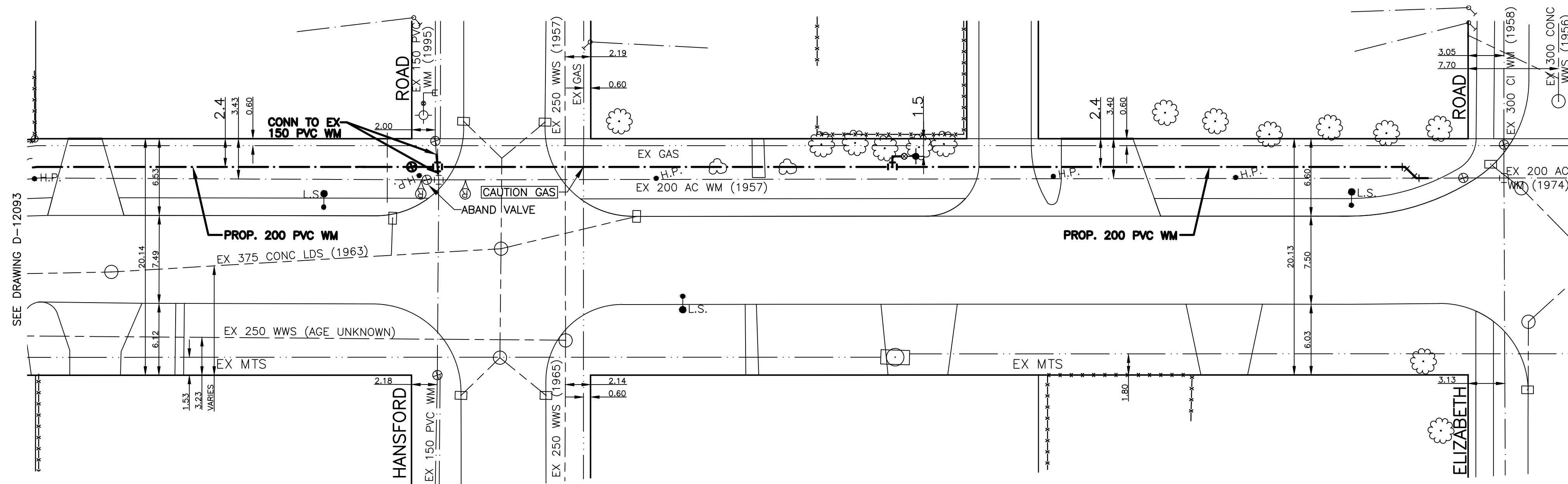
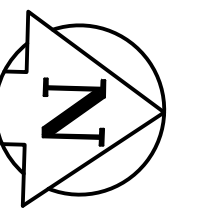


CHAINAGE ALONG WEST PROPERTY LINE OF DE BOURMONT AVENUE
DE BOURMONT AVENUE



- NOTES:**
1. ALL GATE VALVES ARE COUNTER-CLOCKWISE TO OPEN WITH A BLACK OPERATING NUT.
 2. WATERMAIN TO BE INSTALLED BY TRENCHLESS METHODS.
 3. BACKFILL IS CLASS 5 WITHIN BOULEVARD AND CLASS 3 WHEN WITHIN PAVEMENT/SIDEWALK OR WHEN WITHIN 1.0m OF PAVEMENT OR SIDEWALK.
 4. WATER SERVICES ARE 19mm UNLESS OTHERWISE NOTED.
 5. MINIMUM COVER TO TOP OF WATERMAIN SHALL BE 2.4m.
 6. LOCATION OF ALL SERVICES TO BE CONFIRMED IN FIELD.
 7. EXPOSE EXISTING WATERMAIN TO CONFIRM DEPTH PRIOR TO CONSTRUCTION.
 8. ALL LEAD SERVICES TO BE RENEWED TO PROPERTY LINE.
 9. SERVICES TO BE RENEWED SHALL BE REPLACED FROM WATERMAIN TO PROPERTY LINE. ALL OTHERS TO BE RECONNECTED.

METRIC
WHOLE NUMBERS INDICATE MILLIMETRES
DECIMALIZED NUMBERS INDICATE METRES



EXISTING	LEGEND - PLAN	PROPOSED	EXISTING	LEGEND - PROFILE	PROPOSED
	WATERMAIN			REDUCER	
	HYDRANT			PLUG	
	VALVE			TRAFFIC SIGNAL	
	LAND DRAINAGE SEWER			GAS	
	WASTE WATER SEWER			HYDRO	
	MANHOLE			M.T.S.	
	CATCH BASIN			C.B. LEAD	
	CURB STOP			SURVEY BAR	
	TEE			TREE	
	BEND			H.P.	
	ANODE			LAMP STANDARD	

LOCATION APPROVED

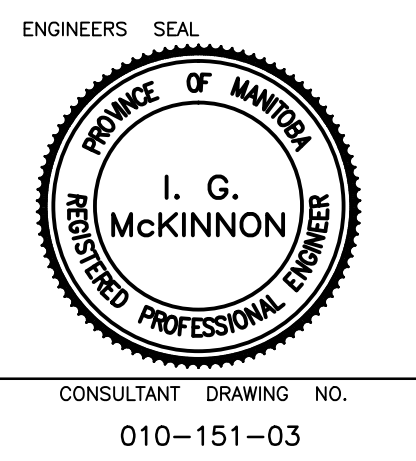
SUPV. U/G STRUCTURES DATE COMMITTEE

NOTE:
LOCATION OF UNDERGROUND STRUCTURES AS SHOWN ARE BASED ON THE BEST INFORMATION AVAILABLE BUT NO GUARANTEE IS GIVEN THAT ALL EXISTING UTILITIES ARE SHOWN OR THAT THE GIVEN LOCATIONS ARE EXACT. CONFIRMATION OF EXISTENCE AND EXACT LOCATION OF ALL SERVICES MUST BE OBTAINED FROM THE INDIVIDUAL UTILITIES BEFORE PROCEEDING WITH CONSTRUCTION.

NO.	REVISIONS	DATE	BY
1	BID OPPORTUNITY 508-2010	JUNE/10	PR

GENIVAR
10 PRAIRIE WAY WINNIPEG, MANITOBA R2J 3J8
PH: (204)-477-6650 FAX: (204)-474-2864

DESIGNED BY PR CHECKED BY SM
DRAWN BY PR APPROVED BY IMcK
HOR. SCALE: 1:250
VERT. SCALE: 1:50
RELEASED FOR CONSTRUCTION
ORIGINALLY SIGNED BY K. ZUREK P. ENG
DATE JUNE 16, 2010



ENGINEERS SEAL
I. G. MCKINNON
CONSULTANT DRAWING NO. 010-151-03

THE CITY OF WINNIPEG
WATER AND WASTE DEPARTMENT

2010 CAPITAL WORKS
WATERMAIN RENEWALS
DE BOURMONT AVENUE
34M NORTH OF FONTAINE CRESCENT (NORTH LEG)
TO ELIZABETH ROAD

SHEET 3 OF 3
CITY DRAWING NO. D-12094