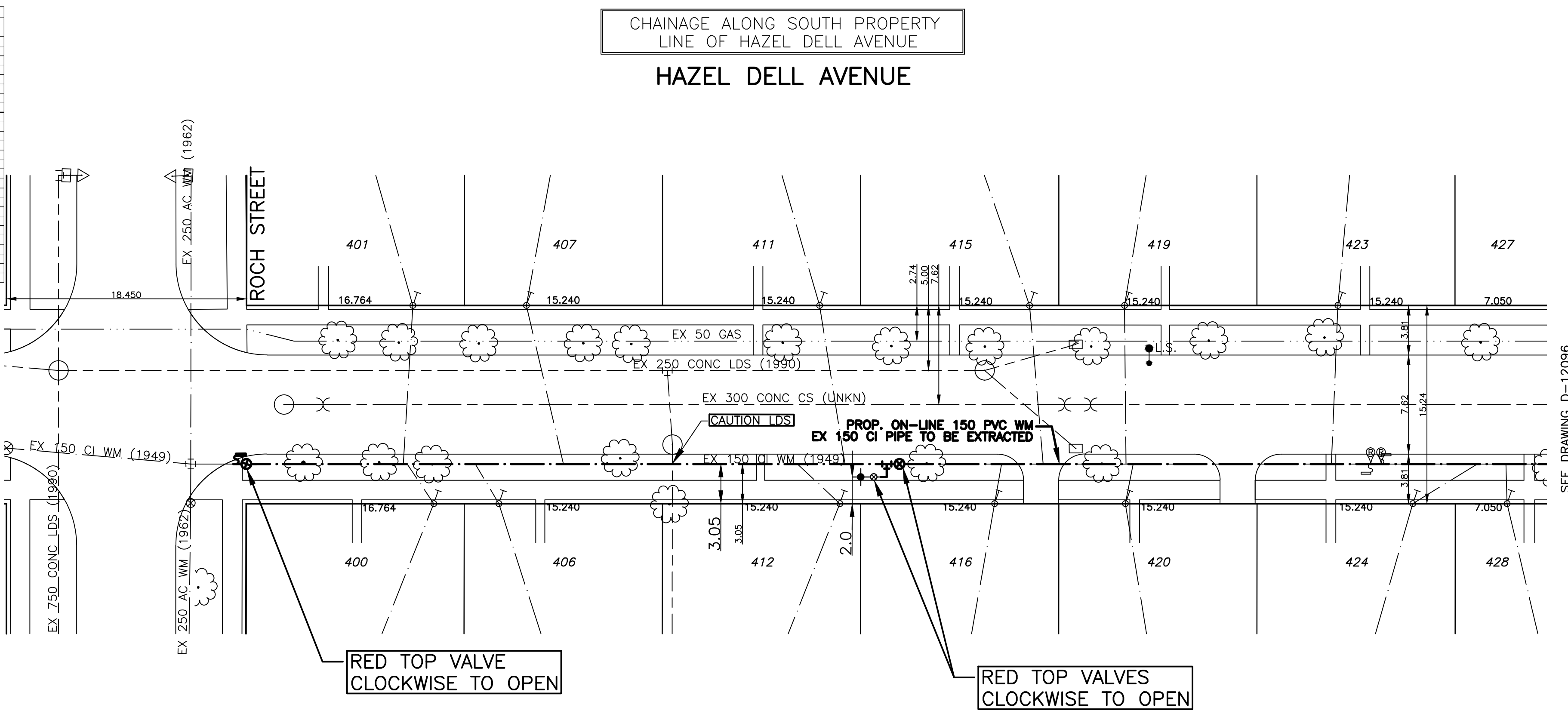


HOUSE WATER SERVICE INFORMATION				
ADDRESS & NATURE OF SERVICE	SIZE (mm) & TYPE	SHORT & LONG MEASUREMENT	CORP LOCATION	REMARKS
400 Hazel Dell Avenue Residential	19 Copper	0.9 W OF E HSE CORNER	14 E OF VALVE BOX	
401 Hazel Dell Avenue Residential	19 Copper	2.7 W E H/L	13.7 E NN VALVE	
406 Hazel Dell Avenue Residential	19 Copper	0.9 E W H/L	38.8 E NN VALVE	
407 Hazel Dell Avenue Residential	19 Copper	2.6 E OF W HSE CORNER	45.1 E OF HYDT	
411 Hazel Dell Avenue Residential	19 Copper	0.6 W OF E HSE CORNER	46 E OF VALVE BOX	
412 Hazel Dell Avenue Residential	19 Copper	2 E E H/L	83.2 W OF HYDT	
415 Hazel Dell Avenue Residential	19 Copper	0.3 W OF E HSE CORNER	47.5 W OF HYDT	
416 Hazel Dell Avenue Residential	19 Copper	2.7 W OF E HSE CORNER	80.7 W OF HYDT	
419 Hazel Dell Avenue Residential	19 Copper	3.4 E W/L	41.1 W OF HYDT	RELOCATE SVC AT ST/LINE
420 Hazel Dell Avenue Residential	19 Copper	2.4 E OF W SIDE OF HSE	40.5 W OF HYDT	
423 Hazel Dell Avenue Residential	19 Copper	4.1 E OF W HSE CORNER	25.3 W OF HYDT	
424 Hazel Dell Avenue Residential	19 Copper	0.6 W OF E HSE CORNER	14.1 W OF HYDT	
428 Hazel Dell Avenue Residential	19 Copper	2.4 E OF W HSE CORNER	11.9 W OF HYDT	



- NOTES:**
- ALL GATE VALVES ARE COUNTER-CLOCKWISE TO CLOSE WITH A RED OPERATING NUT.
 - WATERMAIN TO BE INSTALLED BY TRENCHLESS METHODS.
 - BACKFILL IS CLASS 5 WITHIN BOULEVARD AND CLASS 3 WITHIN PAVEMENT/SIDEWALK OR WHEN WITHIN 1.0m OF PAVEMENT OR SIDEWALK.
 - WATER SERVICES ARE 19mm UNLESS OTHERWISE NOTED.
 - MINIMUM COVER TO TOP OF WATERMAIN SHALL BE 2.4m.
 - LOCATION OF ALL SERVICES TO BE CONFIRMED IN FIELD.
 - EXPOSE EXISTING WATERMAIN TO CONFIRM DEPTH PRIOR TO CONSTRUCTION.
 - ALL LEAD SERVICES TO BE RENEWED TO PROPERTY LINE.
 - SERVICES TO BE RENEWED SHALL BE REPLACED FROM WATERMAIN TO PROPERTY LINE. ALL OTHERS TO BE RECONNECTED.

CHAINAGE ALONG SOUTH PROPERTY LINE OF HAZEL DELL AVENUE



SEE DRAWING D-12096

RED TOP VALVE CLOCKWISE TO OPEN

RED TOP VALVES CLOCKWISE TO OPEN

METRIC
WHOLE NUMBERS INDICATE MILLIMETRES
DECIMALIZED NUMBERS INDICATE METRES



WATERMAIN		REDUCER		WATERMAIN	
EXISTING	PROPOSED	EXISTING	PROPOSED	EXISTING	PROPOSED

LOCATION APPROVED

SUPV. U/G STRUCTURES DATE COMMITTEE

NOTE:
LOCATION OF UNDERGROUND STRUCTURES AS SHOWN ARE BASED ON THE BEST INFORMATION AVAILABLE BUT NO GUARANTEE IS GIVEN THAT ALL EXISTING UTILITIES ARE SHOWN OR THAT THE GIVEN LOCATIONS ARE EXACT. CONFIRMATION OF EXISTENCE AND EXACT LOCATION OF ALL SERVICES MUST BE OBTAINED FROM THE INDIVIDUAL UTILITIES BEFORE PROCEEDING WITH CONSTRUCTION.

B.M. ELEV. CWB12-051 230.305

GENIVAR
10 PRAIRIE WAY WINNIPEG, MANITOBA R2J 3J8
PH: (204)-477-6650 FAX: (204)-474-2864

DESIGNED BY LV/PR CHECKED BY SM
DRAWN BY LV APPROVED BY IMcK
HOR. SCALE: 1:250 RELEASED FOR CONSTRUCTION
VERT. SCALE: 1:50 ORIGINALY SIGNED BY K. ZUREK P. ENG
DATE JUNE 10, 2010 DATE JUNE 16, 2010

ENGINEERS SEAL

CONSULTANT DRAWING NO. 010-051-04

Winnipeg THE CITY OF WINNIPEG WATER AND WASTE DEPARTMENT

2010 CAPITAL WORKS WATERMAIN RENEWALS HAZEL DELL AVENUE

ROCH STREET TO 100M EAST OF ROCH STREET

SHEET 1 OF 4
CITY DRAWING NO. D-12095