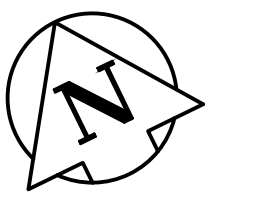
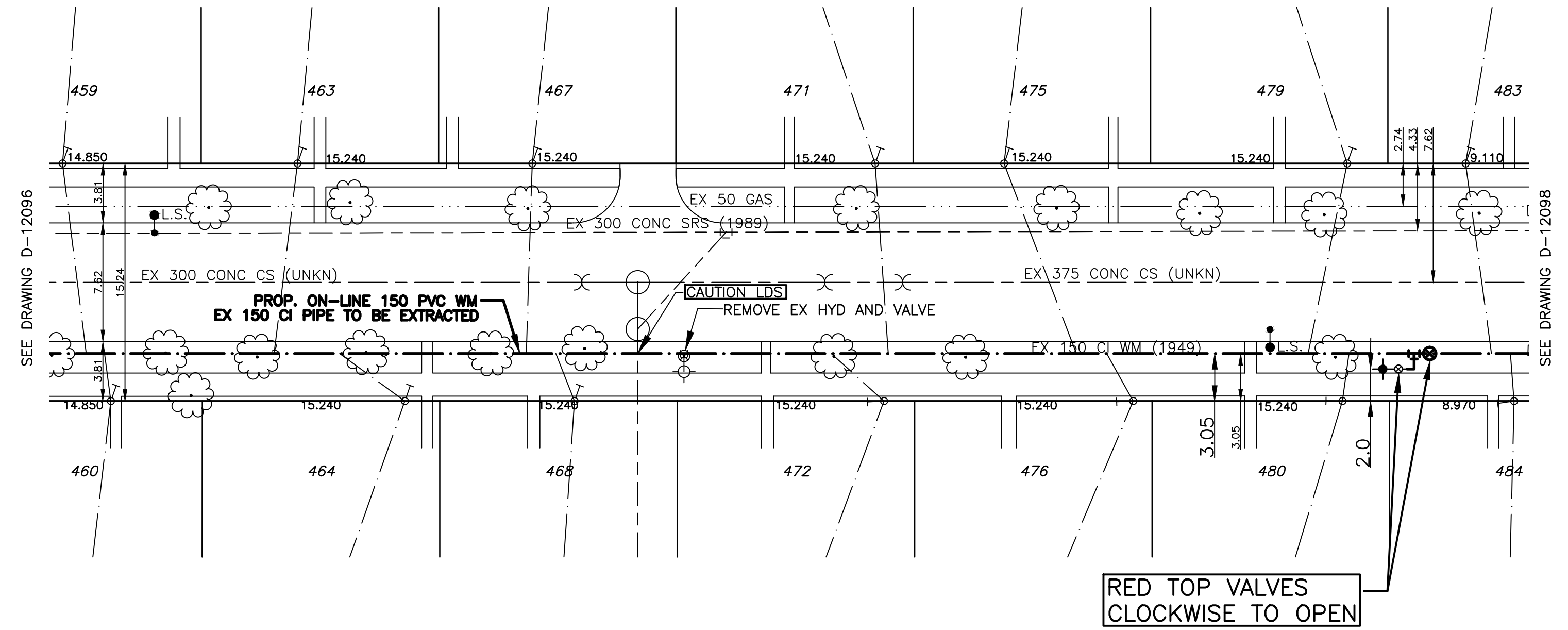


HOUSE WATER SERVICE INFORMATION					
ADDRESS & NATURE OF SERVICE	SIZE (mm) & TYPE	SHORT & LONG MEASUREMENT	CORP LOCATION	REMARKS	
459 Hazel Dell Avenue Residential	19 Copper	3.4 E OF W HSE CORNER	41.1 W OF HYDT		
460 Hazel Dell Avenue Residential	19 Copper	1.5 W OF E HSE CORNER	37.2 W OF HYDT		
463 Hazel Dell Avenue Residential	19 Copper	3.7 E OF W HSE CORNER	26.2 W OF HYDT		
464 Hazel Dell Avenue Residential	19 Copper	1.5 W OF E HSE CORNER	22.1 W OF HYDT		
467 Hazel Dell Avenue Residential	19 Copper	3.1 E OF W HSE CORNER	10.1 W OF HYDT		
468 Hazel Dell Avenue Residential	19 Copper	1.6 W OF E HSE CORNER	8.2 W OF HYDT		
471 Hazel Dell Avenue Residential	19 Copper	0.6 E OF E HSE CORNER	13.1 E OF HYDT	METER STUDY	
472 Hazel Dell Avenue Residential	19 Copper	1.1 W OF E HSE CORNER	9.4 E OF HYDT		
475 Hazel Dell Avenue Residential	19 Copper	3.3 E OF W HSE CORNER	36.6 E OF HYDT		
476 Hazel Dell Avenue Residential	19 Copper	3.4 W OF E HSE CORNER	27.1 E OF HYDT		
479 Hazel Dell Avenue Residential	19 Copper	1.5 W OF E HSE CORNER	25.3 E OF HYDT		
480 Hazel Dell Avenue Residential	19 Copper	1.5 W OF E HSE CORNER	42.7 E OF HYDT		
483 Hazel Dell Avenue Residential	19 Copper	2.7 E OF W HSE CORNER	61.8 E OF HYDT		
484 Hazel Dell Avenue Residential	19 Copper	5.3 E OF W HSE CORNER	63 E OF HYDT		

CHAINAGE ALONG SOUTH PROPERTY LINE OF HAZEL DELL AVENUE



- NOTES:**
1. ALL GATE VALVES ARE COUNTER-CLOCKWISE TO CLOSE WITH A RED OPERATING NUT.
 2. WATERMAIN TO BE INSTALLED BY TRENCHLESS METHODS.
 3. BACKFILL IS CLASS 5 WITHIN BOULEVARD AND CLASS 3 WITHIN PAVEMENT/SIDEWALK OR WHEN WITHIN 1.0m OF PAVEMENT OR SIDEWALK.
 4. WATER SERVICES ARE 19mm UNLESS OTHERWISE NOTED.
 5. MINIMUM COVER TO TOP OF WATERMAIN SHALL BE 2.4m.
 6. LOCATION OF ALL SERVICES TO BE CONFIRMED IN FIELD.
 7. EXPOSE EXISTING WATERMAIN TO CONFIRM DEPTH PRIOR TO CONSTRUCTION.
 8. ALL LEAD SERVICES TO BE RENEWED TO PROPERTY LINE.
 9. SERVICES TO BE RENEWED SHALL BE REPLACED FROM WATERMAIN TO PROPERTY LINE. ALL OTHERS TO BE RECONNECTED.



METRIC
WHOLE NUMBERS INDICATE MILLIMETRES
DECIMALIZED NUMBERS INDICATE METRES



EXISTING	LEGEND - PLAN	PROPOSED	EXISTING	LEGEND - PLAN	PROPOSED	EXISTING	LEGEND - PROFILE	PROPOSED
---	WATERMAIN	---	⊘	REDUCER	⊘	---	150mm W.W.	---
⊕	HYDRANT VALVE	⊕	⊕	PLUG	⊕	---	150mm W.W.	---
---	LAND DRAINAGE SEWER	---	---	TRAFFIC SIGNAL	---	---	300mm L.D.S.	---
---	WASTE WATER SEWER	---	---	GAS	---	---	250mm W.W.S.	---
○	MANHOLE	○	---	HYDRO	---	---	250mm W.W.S.	---
□	CATCH BASIN	□	---	M.T.S.	---	---		---
⊕	CURB STOP	⊕	---	C.B. LEAD	---	---		---
⊕	TEE	⊕	---	SURVEY BAR	---	---		---
⊕	BEND	⊕	---	TREE	---	---		---
⊕	ANODE	⊕	---	H.P.	---	---		---
			---	LAMP STANDARD	---	---		---

LOCATION APPROVED

SUPV. U/G STRUCTURES DATE COMMITTEE

NOTE:
LOCATION OF UNDERGROUND STRUCTURES AS SHOWN ARE BASED ON THE BEST INFORMATION AVAILABLE BUT NO GUARANTEE IS GIVEN THAT ALL EXISTING UTILITIES ARE SHOWN OR THAT THE GIVEN LOCATIONS ARE EXACT. CONFIRMATION OF EXISTENCE AND EXACT LOCATION OF ALL SERVICES MUST BE OBTAINED FROM THE INDIVIDUAL UTILITIES BEFORE PROCEEDING WITH CONSTRUCTION.

B.M. ELEV. CWM12-051 230.305

GENIVAR
10 PRAIRIE WAY WINNIPEG, MANITOBA R2J 3J8
PH: (204)-477-6650 FAX: (204)-474-2864

DESIGNED BY: LV/PR
CHECKED BY: SM

DRAWN BY: LV
APPROVED BY: IMcK

HOR. SCALE: 1:250
VERT. SCALE: 1:50

RELEASED FOR CONSTRUCTION
ORIGINALLY SIGNED BY
K. ZUREK P. ENG
DATE JUNE 16, 2010

ENGINEERS SEAL
PROVINCE OF MANITOBA
REGISTERED PROFESSIONAL ENGINEER
I. G. MCKINNON

CONSULTANT DRAWING NO.
010-051-06

Winnipeg THE CITY OF WINNIPEG WATER AND WASTE DEPARTMENT

2010 CAPITAL WORKS WATERMAIN RENEWALS HAZEL DELL AVENUE
210M EAST OF ROCH STREET TO 300M EAST OF ROCH STREET

SHEET 3 OF 4
CITY DRAWING NO. D-12097