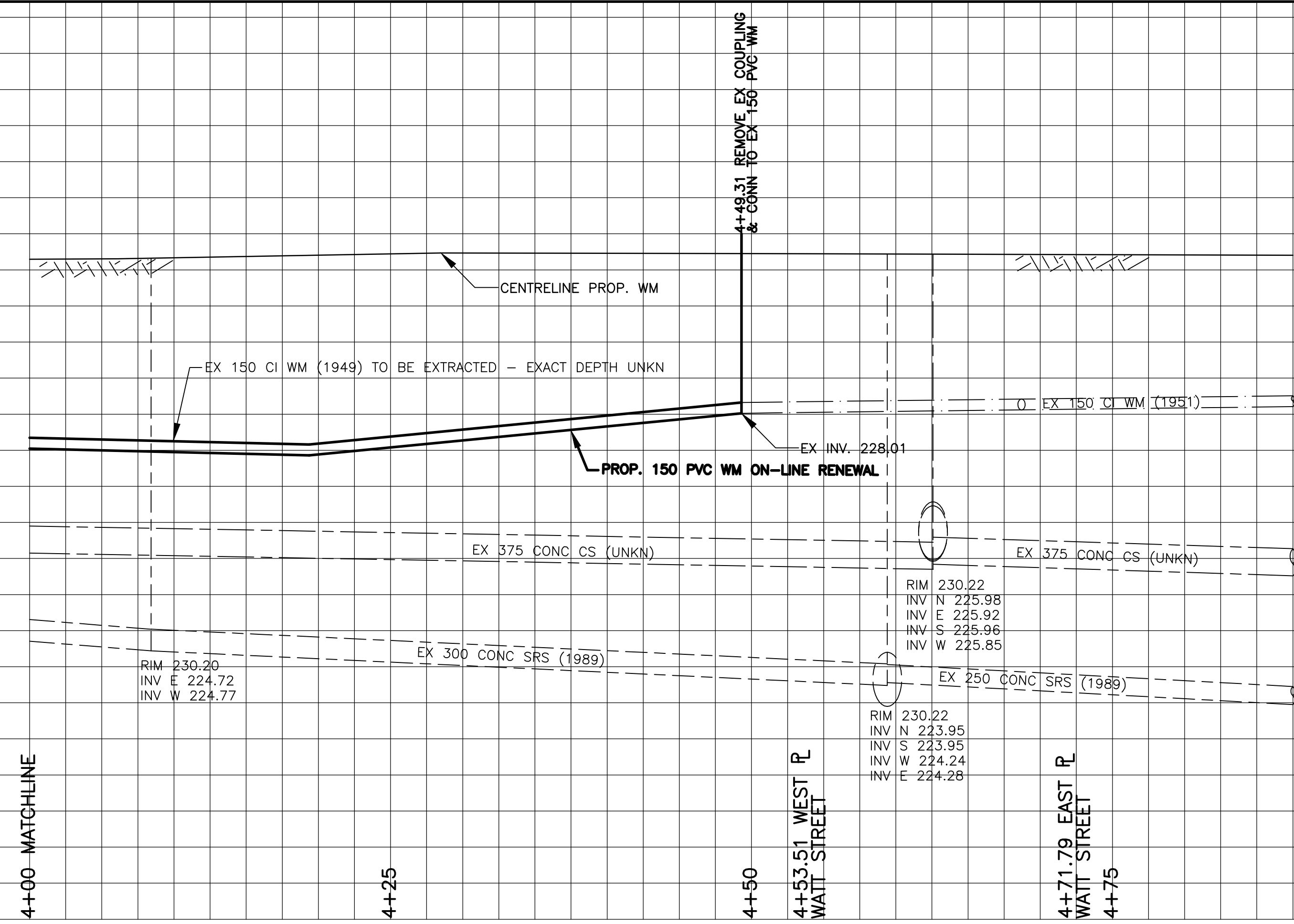
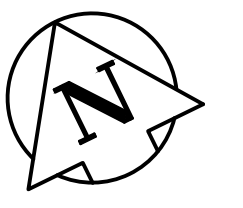


231.000
230.000
229.000
228.000
227.000
226.000
225.000
224.000

231.000
230.000
229.000
228.000
227.000
226.000
225.000
224.000



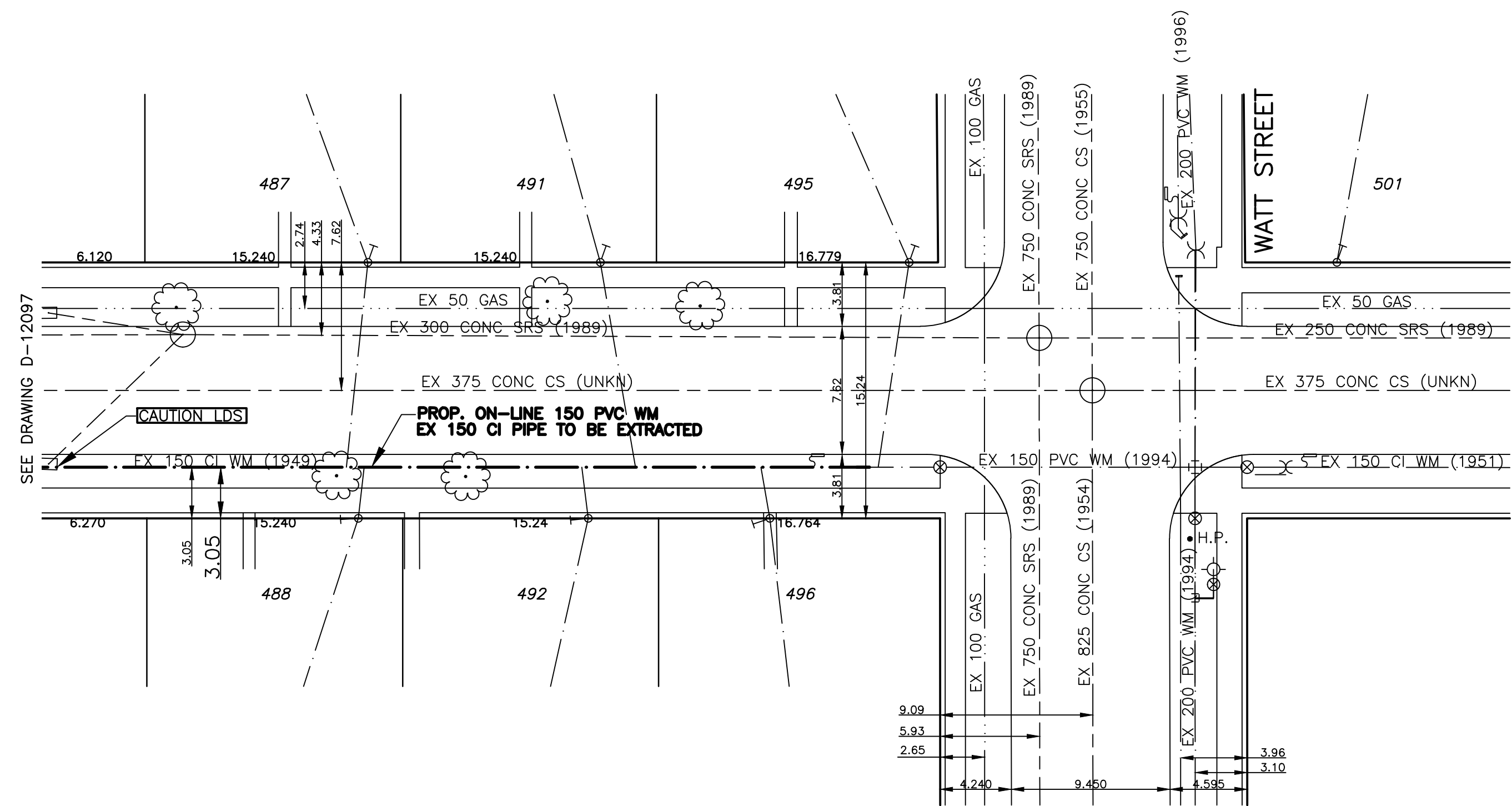
CHAINAGE ALONG SOUTH PROPERTY LINE OF HAZEL DELL AVENUE
HAZEL DELL AVENUE



HOUSE WATER SERVICE INFORMATION					
ADDRESS & NATURE OF SERVICE	SIZE (mm) & TYPE	SHORT & LONG MEASUREMENT	COOP LOCATION	REMARKS	
484 Hazel Dell Avenue Residential	19 Copper	5.3 E OF W HSE CORNER	53 E OF HYDT		
487 Hazel Dell Avenue Residential	19 Copper	0.9 W OF E HSE CORNER	72.4 E OF HYDT		
491 Hazel Dell Avenue Residential	19 Copper	1.8 W OF E HSE CORNER	89.6 E OF HYDT		
492 Hazel Dell Avenue Residential	19 Copper	3.4 W OF E HSE CORNER	21.3 W OF VALVE BOX		
495 Hazel Dell Avenue Residential	19 Copper	8.3 W OF E HSE CORNER	SEE REMARKS	CORP MEAS: 37 W OF VALVE ON W/L WATT WATERMAIN RENEWAL	
496 Hazel Dell Avenue Residential	19 Copper	4.6 E OF W HSE CORNER	10.7 W OF VALVE BOX		

NOTES:

- ALL GATE VALVES ARE COUNTER-CLOCKWISE TO CLOSE WITH A RED OPERATING NUT.
- WATERMAIN TO BE INSTALLED BY TRENCHLESS METHODS.
- BACKFILL IS CLASS 5 WITHIN BOULEVARD AND CLASS 3 WITHIN PAVEMENT/SIDEWALK OR WHEN WITHIN 1.0m OF PAVEMENT OR SIDEWALK.
- WATER SERVICES ARE 19mm UNLESS OTHERWISE NOTED.
- MINIMUM COVER TO TOP OF WATERMAIN SHALL BE 2.4m.
- LOCATION OF ALL SERVICES TO BE CONFIRMED IN FIELD.
- EXPOSE EXISTING WATERMAIN TO CONFIRM DEPTH PRIOR TO CONSTRUCTION.
- ALL LEAD SERVICES TO BE RENEWED TO PROPERTY LINE.
- SERVICES TO BE RENEWED SHALL BE REPLACED FROM WATERMAIN TO PROPERTY LINE. ALL OTHERS TO BE RECONNECTED.



METRIC
WHOLE NUMBERS INDICATE MILLIMETRES
DECIMALIZED NUMBERS INDICATE METRES



EXISTING	LEGEND - PLAN	PROPOSED	EXISTING	LEGEND - PLAN	PROPOSED	EXISTING	LEGEND - PROFILE	PROPOSED
---	WATERMAIN	---	---	REDUCER	---	---	WATERMAIN	---
+	HYDRANT	+	+	PLUG	+	+	VALVE	+
+	VALVE	+	+	TRAFFIC SIGNAL	+	+	LAND DRAINAGE SEWER	+
---	LAND DRAINAGE SEWER	---	---	GAS	---	---	WASTE WATER SEWER	---
---	WASTE WATER SEWER	---	---	HYDRO	---	---	JUNCTIONS	---
○	MANHOLE	○	○	M.T.S.	○	○	CULVERT	○
□	CATCH BASIN	□	□	C.B. LEAD	□	□		□
+	CURB STOP	+	+	SURVEY BAR	+	+		+
+	TEE	+	+	TREE	+	+		+
+	BEND	+	+	H.P.	+	+		+
+	ANODE	+	+	L.S.	+	+		+
---		---	---	LAMP STANDARD	---	---		---

LOCATION APPROVED

SUPV. U/G STRUCTURES DATE COMMITTEE
NOTE:
LOCATION OF UNDERGROUND STRUCTURES AS SHOWN ARE BASED ON THE BEST INFORMATION AVAILABLE BUT NO GUARANTEE IS GIVEN THAT ALL EXISTING UTILITIES ARE SHOWN OR THAT THE GIVEN LOCATIONS ARE EXACT. CONFIRMATION OF EXISTENCE AND EXACT LOCATION OF ALL SERVICES MUST BE OBTAINED FROM THE INDIVIDUAL UTILITIES BEFORE PROCEEDING WITH CONSTRUCTION.

NO.	REVISIONS	DATE	BY
1	BID OPPORTUNITY 508-2010	JUNE/10	PR

GENIVAR
10 PRAIRIE WAY WINNIPEG, MANITOBA R2J 3J8
PH: (204)-477-6650 FAX: (204)-474-2864

DESIGNED BY: LV/PR
DRAWN BY: LV
HOR. SCALE: 1:250
VERT. SCALE: 1:50
DATE: JUNE 2010

CHECKED BY: SM
APPROVED BY: IMcK
RELEASED FOR CONSTRUCTION: K. ZUREK P. ENG
DATE: JUNE 16, 2010

ENGINEERS SEAL
I. G. MCKINNON
REGISTERED PROFESSIONAL ENGINEER
CONSULTANT DRAWING NO. 010-051-07

Winnipeg THE CITY OF WINNIPEG WATER AND WASTE DEPARTMENT

2010 CAPITAL WORKS WATERMAIN RENEWALS HAZEL DELL AVENUE 300M EAST OF ROCH STREET TO WATT STREET

SHEET 4 OF 4
CITY DRAWING NO. D-12098