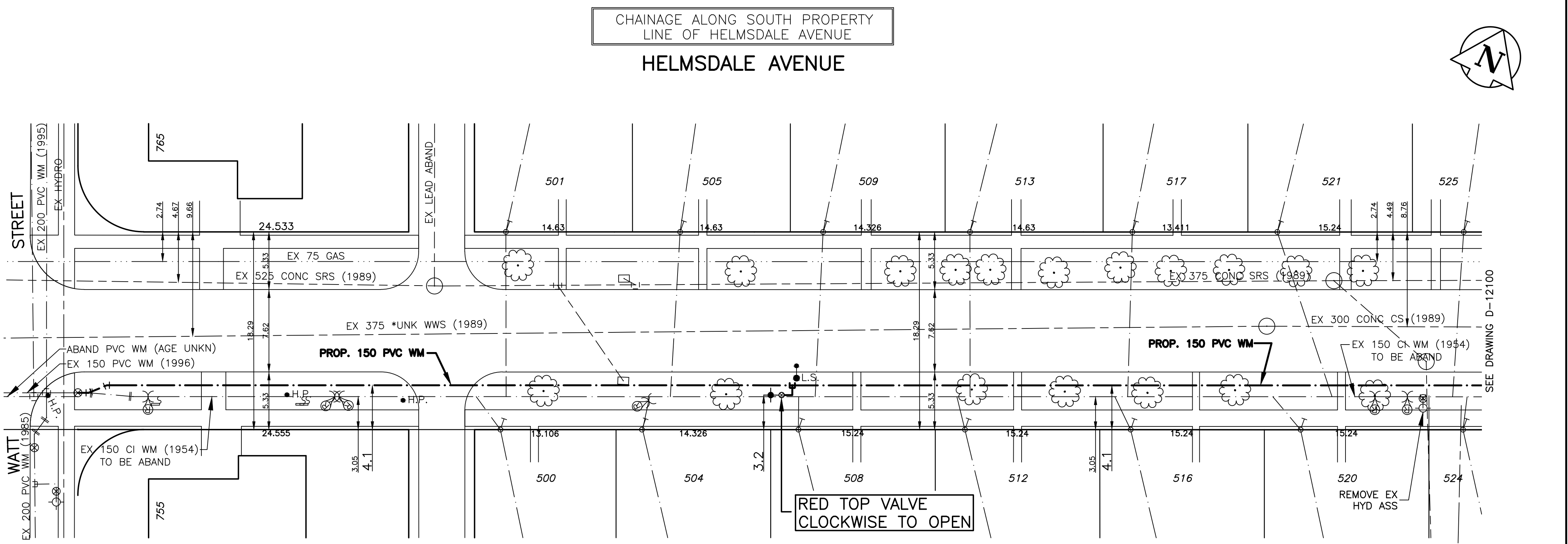


HOUSE WATER SERVICE INFORMATION				
ADDRESS & NATURE OF SERVICE	SIZE (mm) & TYPE	SHORT & LONG MEASUREMENT	CORP LOCATION	REMARKS
500 Helmsdale Avenue Residential	19 Copper	0.8 E W H/L	38.9 E VALVE BOX	
501 Helmsdale Avenue Residential	19 Copper	0.9 E OF W HSE CORNER	43.6 E HYDT	MAR17/03 THAWED DBH LL
504 Helmsdale Avenue Residential	19 Copper	1.2 E OF W HSE CORNER	52.9 E VALVE BOX	
505 Helmsdale Avenue Residential	19 Copper	2.4 E OF W HSE CORNER	54.9 E HYDT	
508 Helmsdale Avenue Residential	19 Copper	0.6 E OF W HSE CORNER	66.8 E VALVE BOX	
509 Helmsdale Avenue Residential	19 Copper	1.5 E OF W HSE CORNER	56.7 W OF HYDT	
512 Helmsdale Avenue Residential	19 Copper	1 E OF W HSE CORNER	43.6 W OF HYDT	
513 Helmsdale Avenue Residential	19 Copper	IN LINE WITH HSE CORNER	42.4 W OF HYDT	
516 Helmsdale Avenue Residential	19 Copper	1.2 E/WHL	29 W OF HYDT	AUG/OO-FACTORED SERVICE BOX
517 Helmsdale Avenue Residential	19 Copper	RIGHT ON W H/L	27.8 W OF HYDT	
520 Helmsdale Avenue Residential	19 Copper	1.3 E OF W HSE CORNER	14.3 W OF HYDT	
521 Helmsdale Avenue Residential	19 Copper	1.2 E OF W HSE CORNER	8.8 W OF HYDT	
524 Helmsdale Avenue Residential	19 Copper	2.1 E/WHL	3.7 W OF HYDT	AUG/OO-FACTORED SERVICE BOX
525 Helmsdale Avenue Residential	19 Copper	1.2 E W CORNER HSE	2.3 E OF HYDT	

- NOTES:**
- ALL GATE VALVES ARE CLOCKWISE TO OPEN WITH A RED OPERATING NUT.
 - WATERMAIN TO BE INSTALLED BY TRENCHLESS METHODS.
 - BACKFILL IS CLASS 5 WITHIN BOULEVARD AND CLASS 3 WITHIN PAVEMENT/SIDEWALK OR WHEN WITHIN 1.0m OF PAVEMENT OR SIDEWALK.
 - WATER SERVICES ARE 19mm UNLESS OTHERWISE NOTED.
 - MINIMUM COVER TO TOP OF WATERMAIN SHALL BE 2.4m.
 - LOCATION OF ALL SERVICES TO BE CONFIRMED IN FIELD.
 - EXPOSE EXISTING WATERMAIN TO CONFIRM DEPTH PRIOR TO CONSTRUCTION.
 - ALL LEAD SERVICES TO BE RENEWED TO PROPERTY LINE.
 - SERVICES TO BE RENEWED SHALL BE REPLACED FROM WATERMAIN TO PROPERTY LINE. ALL OTHERS TO BE RECONNECTED.



WATERMAIN		REDUCER		WATERMAIN	
EXISTING	PROPOSED	EXISTING	PROPOSED	EXISTING	PROPOSED
Hydrant Valve	Hydrant Valve	Plug	Plug	150mm W.M.	150mm W.M.
Land Drainage Sewer	Land Drainage Sewer	Traffic Signal	Traffic Signal	300mm L.D.S.	300mm L.D.S.
Waste Water Sewer	Waste Water Sewer	Gas	Gas	250mm W.W.S.	250mm W.W.S.
Manhole	Manhole	Hydro	Hydro		
Catch Basin	Catch Basin	M.T.S.	M.T.S.		
Curb Stop	Curb Stop	C.B. LEAD	C.B. LEAD		
TEE	TEE	Survey Bar	Survey Bar		
Bend	Bend	Tree	Tree		
Anode	Anode	H.F.P.	H.F.P.		
		L.S.	L.S.		
		Lamp Standard	Lamp Standard		

LOCATION APPROVED

SUPV. U/G STRUCTURES DATE COMMITTEE

NOTE: LOCATION OF UNDERGROUND STRUCTURES AS SHOWN ARE BASED ON THE BEST INFORMATION AVAILABLE BUT NO GUARANTEE IS GIVEN THAT ALL EXISTING UTILITIES ARE SHOWN OR THAT THE GIVEN LOCATIONS ARE EXACT. CONFIRMATION OF EXISTENCE AND EXACT LOCATION OF ALL SERVICES MUST BE OBTAINED FROM THE INDIVIDUAL UTILITIES BEFORE PROCEEDING WITH CONSTRUCTION.

B.M. ELEV.	CWM 12-062	230.164
------------	------------	---------

GENIVAR

10 PRAIRIE WAY WINNIPEG, MANITOBA R2J 3J8
PH: (204)-477-6650 FAX: (204)-474-2864

DESIGNED BY: PR
DRAWN BY: PR
HOR. SCALE: 1:250
VERT. SCALE: 1:50

CHECKED BY: SM
APPROVED BY: IMcK
RELEASED FOR CONSTRUCTION: K. ZUREK P. ENG
DATE: JUNE 16, 2010

ENGINEERS SEAL

I. G. MCKINNON
REGISTERED PROFESSIONAL ENGINEER

CONSULTANT DRAWING NO. 010-051-08

THE CITY OF WINNIPEG
WATER AND WASTE DEPARTMENT

2010 CAPITAL WORKS
WATERMAIN RENEWALS
HELMSDALE AVENUE
WATT STREET TO 130M EAST OF WATT STREET

SHEET 1 OF 2
CITY DRAWING NO. D-12099