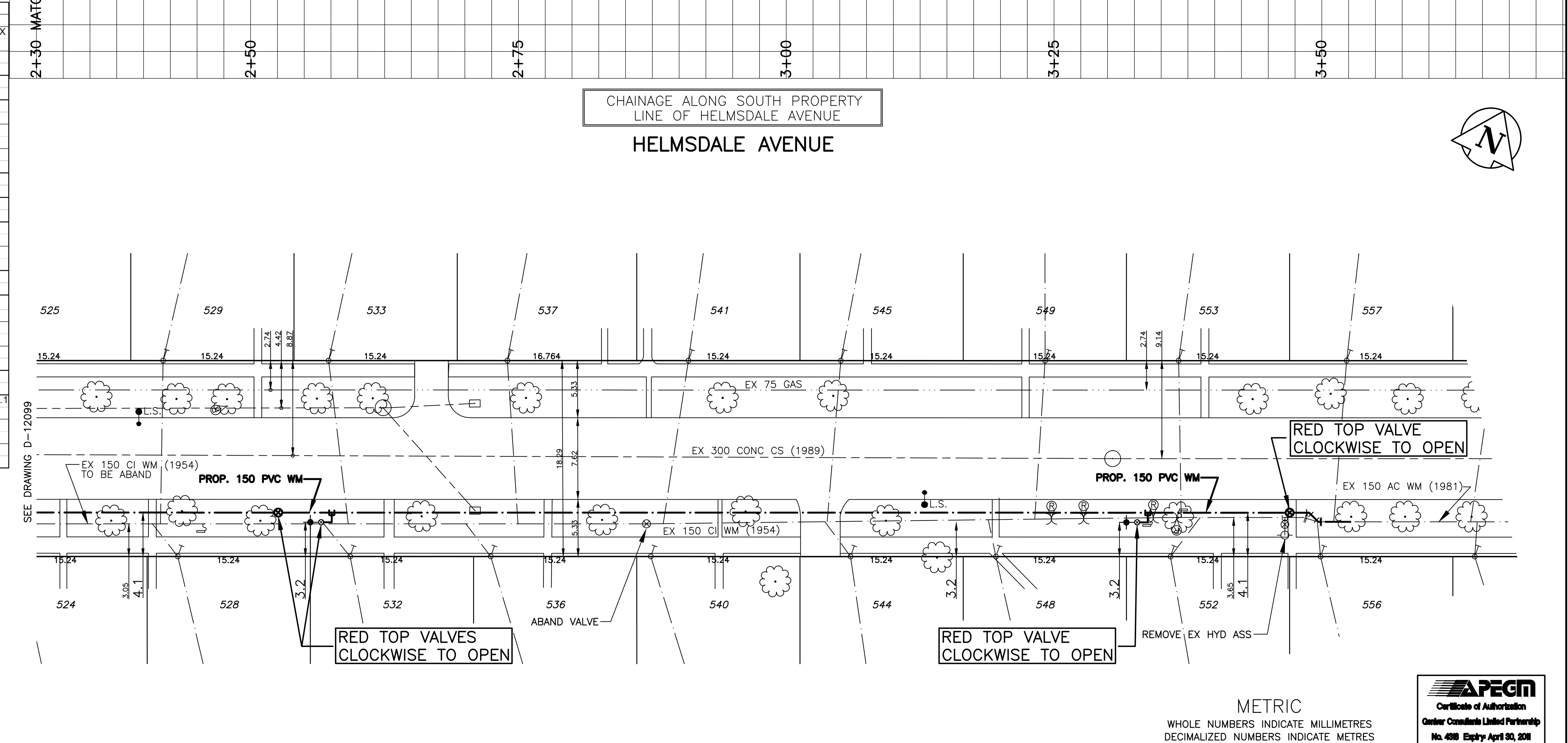


HOUSE WATER SERVICE INFORMATION				
ADDRESS & NATURE	SIZE (mm)	SHORT & LONG	CORP LOCATION	REMARKS
524 Helmsdale Avenue Residential	19 Copper	2.1 E/WHL	3.7 W OF HYDT	AUG/OO-FACTORED SERVICE BOX
525 Helmsdale Avenue Residential	19 Copper	1.2 E W CORNER HSE	2.3 E OF HYDT	
528 Helmsdale Avenue Residential	19 Copper	1.2 E OF W HSE CORNER	15.8 E OF HYDT	
529 Helmsdale Avenue Residential	19 Copper	9.1 E OF W HSE CORNER	16.6 E OF HYDT	
532 Helmsdale Avenue Residential	19 Copper	1.8 E OF W HSE CORNER	31.9 E OF HYDT	
533 Helmsdale Avenue Residential	19 Copper	0.8 E OF W HSE CORNER	34.1 E OF HYDT	
536 Helmsdale Avenue Residential	19 Copper	1.3 W OF W HSE CORNER	45.1 E OF HYDT	
537 Helmsdale Avenue Residential	19 Copper	0.6 W OF W HSE CORNER	50 E OF HYDT	
540 Helmsdale Avenue Residential	19 Copper	1.2 W/WHL		MAY03-RENEWED SERVICE BOX SCHED B PROGRAM
541 Helmsdale Avenue Residential	19 Copper	1.8 E OF W H/L	58.4 W OF HYDT	
544 Helmsdale Avenue Residential	19 Copper	0.3 E OF W HSE CORNER	43.3 W OF HYDT	
545 Helmsdale Avenue Residential	19 Copper	1.5 E OF W HSE CORNER	43.1 W OF HYDT	
548 Helmsdale Avenue Residential	19 Copper	0.8 E OF W HSE CORNER	28 W OF HYDT	
549 Helmsdale Avenue Residential	19 Copper	4.9 E OF W HSE CORNER	23.7 W OF HYDT	
552 Helmsdale Avenue Residential	19 Copper	0.3 E OF W HSE CORNER	8.3 W OF HYDT	
553 Helmsdale Avenue Residential	19 Copper	2.4 E/WHL	0.3 W OF S/C	DEC/99-REVERSED TAPPED INTO 0.1 COUPLING 0.025 FROM CORP
556 Helmsdale Avenue Residential	19 Copper	0.3 E OF W HSE CORNER	2.7 E OF HYDT	
557 Helmsdale Avenue Residential	19 Copper	2.2 E OF W HSE CORNER	4.2 E OF HYDT	

- NOTES:**
- ALL GATE VALVES ARE CLOCKWISE TO OPEN WITH A RED OPERATING NUT.
 - WATERMAIN TO BE INSTALLED BY TRENCHLESS METHODS.
 - BACKFILL IS CLASS 5 WITHIN BOULEVARD AND CLASS 3 WITHIN PAVEMENT/SIDEWALK OR WHEN WITHIN 1.0m OF PAVEMENT OR SIDEWALK.
 - WATER SERVICES ARE 19mm UNLESS OTHERWISE NOTED.
 - MINIMUM COVER TO TOP OF WATERMAIN SHALL BE 2.4m.
 - LOCATION OF ALL SERVICES TO BE CONFIRMED IN FIELD.
 - EXPOSE EXISTING WATERMAIN TO CONFIRM DEPTH PRIOR TO CONSTRUCTION.
 - ALL LEAD SERVICES TO BE RENEWED TO PROPERTY LINE.
 - SERVICES TO BE RENEWED SHALL BE REPLACED FROM WATERMAIN TO PROPERTY LINE. ALL OTHERS TO BE RECONNECTED.



EXISTING	LEGEND - PLAN	PROPOSED	EXISTING	LEGEND - PLAN	PROPOSED	EXISTING	LEGEND - PROFILE	PROPOSED
---	WATERMAIN	---	---	REDUCER	---	---	WATERMAIN	---
+	HYDRANT VALVE	+	+	PLUG	+	+	VALVE	+
---	LAND DRAINAGE SEWER	---	---	TRAFFIC SIGNAL	---	---	LAND DRAINAGE SEWER	---
---	WASTE WATER SEWER	---	---	GAS	---	---	WASTE WATER SEWER	---
○	MANHOLE	○	○	HYDRO	○	○	JUNCTIONS	○
□	CATCH BASIN	□	□	M.T.S.	□	□	CULVERT	□
⊕	CURB STOP	⊕	⊕	C.B. LEAD	⊕	⊕		
⊕	TEE	⊕	⊕	SURVEY BAR	⊕	⊕		
⊕	BEND	⊕	⊕	TREE	⊕	⊕		
⊕	ANODE	⊕	⊕	H.F.P.	⊕	⊕		
				LAMP STANDARD				

LOCATION APPROVED

SUPV. U/G STRUCTURES DATE COMMITTEE

NOTE: LOCATION OF UNDERGROUND STRUCTURES AS SHOWN ARE BASED ON THE BEST INFORMATION AVAILABLE BUT NO GUARANTEE IS GIVEN THAT ALL EXISTING UTILITIES ARE SHOWN OR THAT THE GIVEN LOCATIONS ARE EXACT. CONFIRMATION OF EXISTENCE AND EXACT LOCATION OF ALL SERVICES MUST BE OBTAINED FROM THE INDIVIDUAL UTILITIES BEFORE PROCEEDING WITH CONSTRUCTION.

B.M. ELEV.	CWB# 12-062	230.164
NO.	REVISIONS	DATE
1	BID OPPORTUNITY 508-2010	JUNE/10
		PR
		DATE

GENIVAR

10 PRAIRIE WAY WINNIPEG, MANITOBA R2J 3J8
PH: (204)-477-6650 FAX: (204)-474-2864

DESIGNED BY: PR
CHECKED BY: SM
DRAWN BY: PR
APPROVED BY: IMcK
HOR. SCALE: 1:250
VERT. SCALE: 1:50
RELEASED FOR CONSTRUCTION
ORIGINALLY SIGNED BY
K. ZUREK P. ENG
DATE JUNE 16, 2010

ENGINEERS SEAL

I. G. MCKINNON

REGISTERED PROFESSIONAL ENGINEER

CONSULTANT DRAWING NO. 010-051-09

THE CITY OF WINNIPEG
WATER AND WASTE DEPARTMENT

2010 CAPITAL WORKS
WATERMAIN RENEWALS
HELMSDALE AVENUE
130M EAST OF WATT STREET TO
104M WEST OF GOLSPIE STREET

SHEET 2 OF 2
CITY DRAWING NO. D-12100