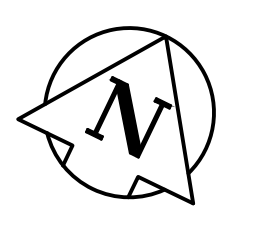


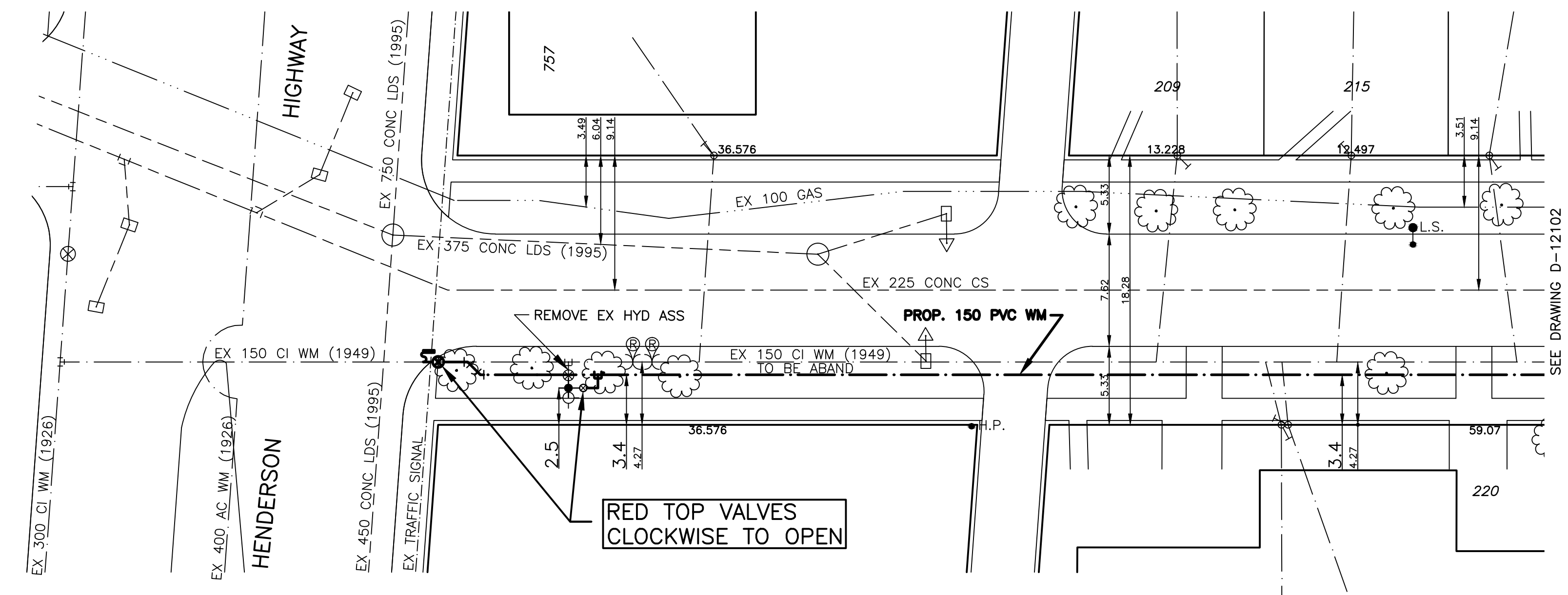
HOUSE WATER SERVICE INFORMATION					
ADDRESS & NATURE OF SERVICE	SIZE (mm) & TYPE	SHORT & LONG MEASUREMENT	CORP LOCATION	REMARKS	
757 Henderson Highway Residential	UNKN UNKN				
209 Helmsdale Avenue Residential	19 Copper	4.3 W OF E/H/L	48.8 E VALVE BOX		
215 Helmsdale Avenue Residential	19 Copper	3.7 W OF E/H/L	61 E VALVE BOX		
220 Helmsdale Avenue Residential	19 Copper	14.6 E/W BLDG LINE 3.4 FR BLDG FRONT	13.1 E/W/L #220		
220 Helmsdale Avenue Residential	19 Copper	14.2 E/W BLDG LINE 3.4 FR BLDG FRONT	58.3 W OF HYDT		

CHAINAGE ALONG SOUTH PROPERTY LINE OF HELMSDALE AVENUE

**HELMSDALE AVENUE**



- NOTES:**
- ALL GATE VALVES ARE CLOCKWISE TO OPEN WITH A RED OPERATING NUT.
  - WATERMAIN TO BE INSTALLED BY TRENCHLESS METHODS.
  - BACKFILL IS CLASS 5 WITHIN BOULEVARD AND CLASS 3 WITHIN PAVEMENT/SIDEWALK OR WHEN WITHIN 1.0m OF PAVEMENT OR SIDEWALK.
  - WATER SERVICES ARE 19mm UNLESS OTHERWISE NOTED.
  - MINIMUM COVER TO TOP OF WATERMAIN SHALL BE 2.4m.
  - LOCATION OF ALL SERVICES TO BE CONFIRMED IN FIELD.
  - EXPOSE EXISTING WATERMAIN TO CONFIRM DEPTH PRIOR TO CONSTRUCTION.
  - ALL LEAD SERVICES TO BE RENEWED TO PROPERTY LINE.
  - SERVICES TO BE RENEWED SHALL BE REPLACED FROM WATERMAIN TO PROPERTY LINE. ALL OTHERS TO BE RECONNECTED.



METRIC  
WHOLE NUMBERS INDICATE MILLIMETRES  
DECIMALIZED NUMBERS INDICATE METRES

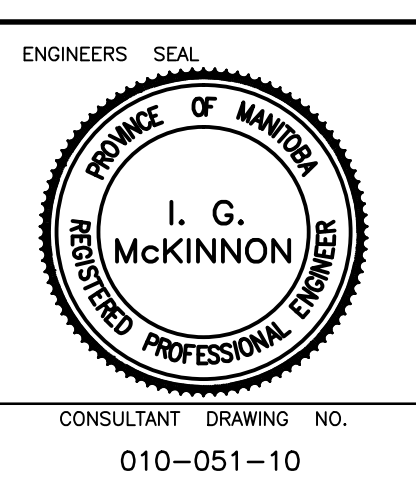


EXISTING	LEGEND - PLAN	PROPOSED	EXISTING	LEGEND - PLAN	PROPOSED	EXISTING	LEGEND - PROFILE	PROPOSED
—	WATERMAIN	—	—	REDUCER	—	—	150mm W.W.	—
—	HYDRANT	—	—	PLUG	—	—	300mm L.D.S.	—
—	VALVE	—	—	TRAFFIC SIGNAL	—	—	250mm W.W.S.	—
—	LAND DRAINAGE SEWER	—	—	GAS	—	—	150mm W.W.	—
—	WASTE WATER SEWER	—	—	HYDRO	—	—	300mm L.D.S.	—
—	MANHOLE	—	—	M.T.S.	—	—	250mm W.W.S.	—
—	CATCH BASIN	—	—	C.B. LEAD	—	—	—	—
—	CURB STOP	—	—	SURVEY BAR	—	—	—	—
—	TEE	—	—	TREE	—	—	—	—
—	BEND	—	—	H.P.P.	—	—	—	—
—	ANODE	—	—	LAMP STANDARD	—	—	—	—

NO.	REVISIONS	DATE	BY
1	BID OPPORTUNITY 508-2010	JUNE/10	PR

**GENIVAR**  
10 PRAIRIE WAY WINNIPEG, MANITOBA R2J 3J8  
PH: (204)-477-6650 FAX: (204)-474-2884

DESIGNED BY: PR  
CHECKED BY: SM  
DRAWN BY: PR  
APPROVED BY: IMcK  
HOR. SCALE: 1:250  
VERT. SCALE: 1:50  
RELEASED FOR CONSTRUCTION  
ORIGINALLY SIGNED BY: K. ZUREK P. ENG  
DATE: JUNE 16, 2010



Winnipeg THE CITY OF WINNIPEG  
WATER AND WASTE DEPARTMENT

**2010 CAPITAL WORKS  
WATERMAIN RENEWALS  
HELMSDALE AVENUE**  
HENDERSON HIGHWAY TO  
75M EAST OF HENDERSON HIGHWAY

SHEET 1 OF 2  
CITY DRAWING NO.  
**D-12101**