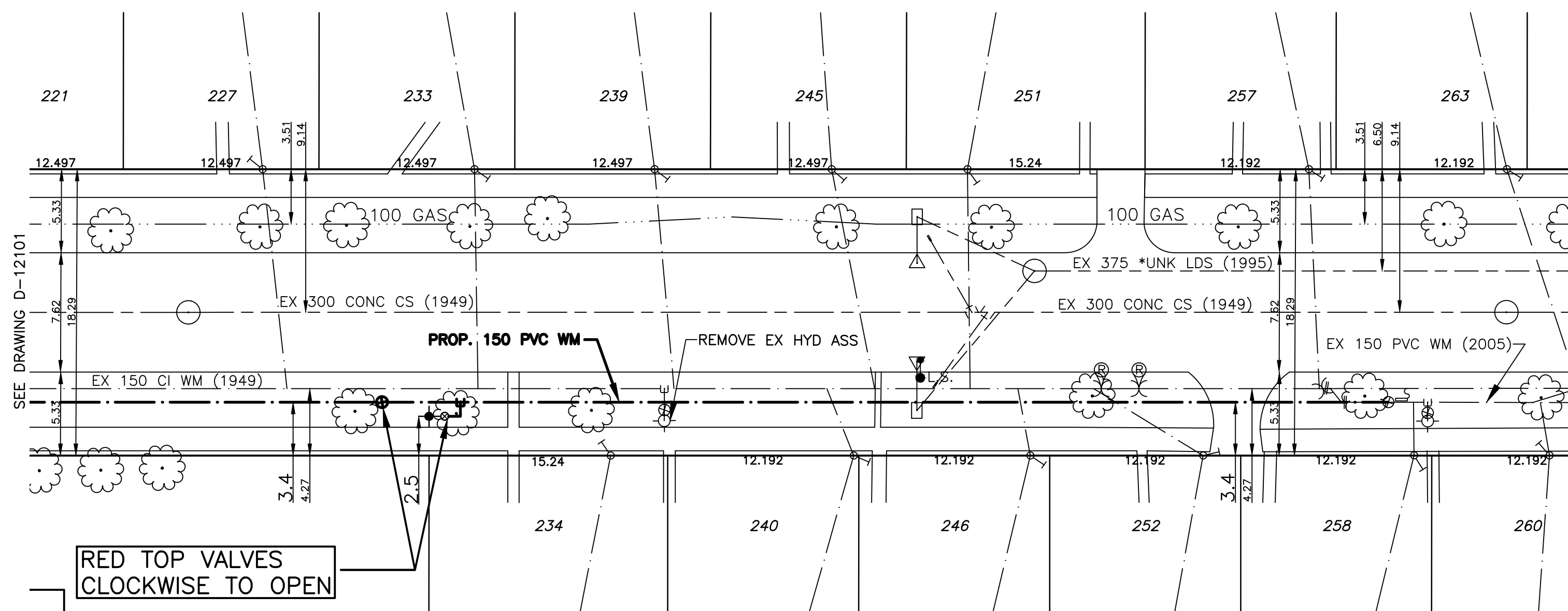
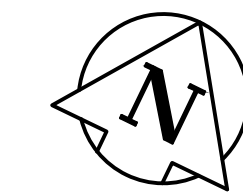


HOUSE WATER SERVICE INFORMATION				
ADDRESS & NATURE OF	SIZE (mm) &	SHORT & LONG	CORP LOCATION	REMARKS
221 Helmsdale Avenue Residential	19 Copper	14.6 E OF W COR OF BLDG	73.2 E GATE VALV	
227 Helmsdale Avenue Residential	19 Copper	6.4 E OF W COR OF HSE	91.4 E GATE VALV	
233 Helmsdale Avenue Residential	19 Copper	6.1 E OF W COR OF HSE	103.6 E GATE VALV	
234 Helmsdale Avenue Residential	19 Copper	1.8 W E H/L		SEWER RENEWED TO 0.15 VC FR MAIN INTO EXIST 0.15 CONC 2.8 FR S/L HELMSDALE
239 Helmsdale Avenue Residential	19 Copper	6.7 E W COR HSE		
240 Helmsdale Avenue Residential	19 Copper	0.3 W E COR HSE		
245 Helmsdale Avenue Residential	19 Copper	2.7 W E COR HSE		
246 Helmsdale Avenue Residential	19 Copper	0.6 W E COR HSE		
251 Helmsdale Avenue Residential	19 Copper	0.9 W W H/L		
252 Helmsdale Avenue Residential	19 Copper	1.2 W E E/H/L		
257 Helmsdale Avenue Residential	19 Copper	1.1 W E H/L		97/09/11-50 C BOTH SIDES, LEAKING AT CITY SIDE RING PLACE
258 Helmsdale Avenue Residential	19 Copper	9.4 OUT FROM HOUSE		
260 Helmsdale Avenue Residential	19 Copper	0.3 W E/L HSE		
263 Helmsdale Avenue Residential	19 Copper	3.7 W E H/L		
263 Helmsdale Avenue Residential	19 Copper	8.2 E W COR HSE		

**NOTES:**

- ALL GATE VALVES ARE CLOCKWISE TO OPEN WITH A RED OPERATING NUT.
- WATERMAIN TO BE INSTALLED BY TRENCHLESS METHODS.
- BACKFILL IS CLASS 5 WITHIN BOULEVARD AND CLASS 3 WITHIN PAVEMENT/SIDEWALK OR WHEN WITHIN 1.0m OF PAVEMENT OR SIDEWALK.
- WATER SERVICES ARE 19mm UNLESS OTHERWISE NOTED.
- MINIMUM COVER TO TOP OF WATERMAIN SHALL BE 2.4m.
- LOCATION OF ALL SERVICES TO BE CONFIRMED IN FIELD.
- EXPOSE EXISTING WATERMAIN TO CONFIRM DEPTH PRIOR TO CONSTRUCTION.
- ALL LEAD SERVICES TO BE RENEWED TO PROPERTY LINE.
- SERVICES TO BE RENEWED SHALL BE REPLACED FROM WATERMAIN TO PROPERTY LINE. ALL OTHERS TO BE RECONNECTED.

CHAINAGE ALONG SOUTH PROPERTY LINE OF HELMSDALE AVENUE



METRIC  
WHOLE NUMBERS INDICATE MILLIMETRES  
DECIMALIZED NUMBERS INDICATE METRES



EXISTING	LEGEND - PLAN	PROPOSED	EXISTING	LEGEND - PLAN	PROPOSED	EXISTING	LEGEND - PROFILE	PROPOSED
---	WATERMAIN	---	◊	REDUCER	◊	---	150mm W.M.	---
+	HYDRANT	+	+	PLUG	+	---	300mm L.D.S.	---
+	VALVE	+	+	TRAFFIC SIGNAL	+	---	250mm W.W.S.	---
---	LAND DRAINAGE SEWER	---	---	GAS	---	---	WASTE WATER SEWER	---
---	WASTE WATER SEWER	---	---	HYDRO	---	---	JUNCTIONS	---
○	MANHOLE	○	---	M.T.S.	---	---	CULVERT	---
□	CATCH BASIN	□	---	C.B. LEAD	---	---		---
+	CURB STOP	+	---	SURVEY BAR	---	---		---
+	TEE	+	---	TREE	---	---		---
+	BEND	+	---	H.P.	---	---		---
+	ANODE	+	---	L.S.	---	---		---
---		---	---	LAMP STANDARD	---	---		---

LOCATION APPROVED		B.M. ELEV.	CWM 12-051 230.305
---	SUPV. U/G STRUCTURES	DATE	
---	COMMITTEE		
NOTE: LOCATION OF UNDERGROUND STRUCTURES AS SHOWN ARE BASED ON THE BEST INFORMATION AVAILABLE BUT NO GUARANTEE IS GIVEN THAT ALL EXISTING UTILITIES ARE SHOWN OR THAT THE GIVEN LOCATIONS ARE EXACT. CONFIRMATION OF EXISTENCE AND EXACT LOCATION OF ALL SERVICES MUST BE OBTAINED FROM THE INDIVIDUAL UTILITIES BEFORE PROCEEDING WITH CONSTRUCTION.			
1	BID OPPORTUNITY 508-2010	JUNE/10	PR
NO.	REVISIONS	DATE	BY

**GENIVAR**  
10 PRAIRIE WAY WINNIPEG, MANITOBA R2J 3J8  
PH: (204)-477-6650 FAX: (204)-474-2864

DESIGNED BY	PR	CHECKED BY	SM
DRAWN BY	PR	APPROVED BY	IMcK
HOR. SCALE:	1:250	RELEASED FOR CONSTRUCTION	ORIGINALLY SIGNED BY
VERT. SCALE:	1:50		
DATE	JUNE 2010		

ENGINEERS SEAL  
**I. G. MCKINNON**  
REGISTERED PROFESSIONAL ENGINEER  
CONSULTANT DRAWING NO.  
010-051-11

Winnipeg  
**THE CITY OF WINNIPEG**  
WATER AND WASTE DEPARTMENT

**2010 CAPITAL WORKS  
WATERMAIN RENEWALS  
HELMSDALE AVENUE**  
75M EAST OF HENDERSON HIGHWAY  
162M EAST OF HENDERSON HIGHWAY