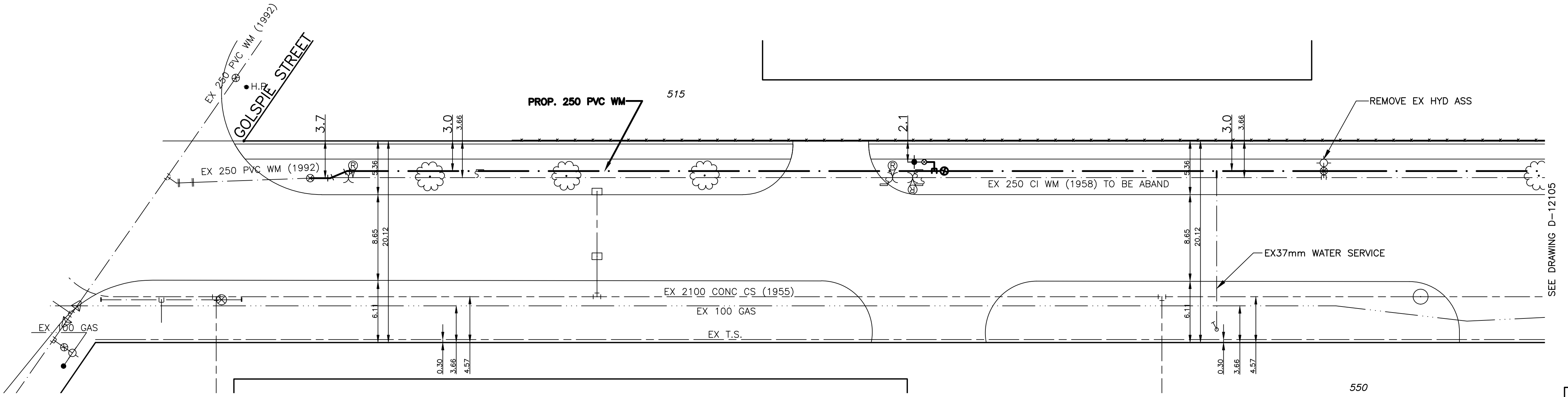


HOUSE WATER SERVICE INFORMATION				
ADDRESS & NATURE OF	SIZE (mm) & TYPE	SHORT & LONG	CORP LOCATION	REMARKS
515 Munroe Avenue Industrial		2.1 S S/L 14 W W/L ON GOLSPIE		JAN17/00 0.025 MTR MISSING, OWNER WILL TRY & LOCATE PER 436 GARY/DLSSTOP CONTROLS
515 Munroe Avenue Industrial				SEWER CONN TAPPED OF F GOLSPIE ST 35.1 N/MH @ MUNROE - INSTALLED FEB/57 - SCHWAR
515 Munroe Avenue Fire Domestic	200 Cast Iron	19.2 N S BLDG LINE IN DRIVEWAY		TEE 44.8 S N HYDT - 0.20 OF 0.25 TEE
550 Munroe Avenue Commercial	37 Copper	21.6 W E/L BLDG 24.7 OUT FR GAR DR		
550 Munroe Avenue Sprinkler	200 Poly V	SEE REMARKS 88.6 W E/L E BLDG	22.6 W H 2ND E	Golspie
550 Munroe Avenue Sprinkler	200	22.3 W E/L BLDG 4 S N/L MUNROE		

CHAINAGE ALONG NORTH PROPERTY LINE OF MUNROE AVENUE

MUNROE AVENUE

- NOTES:**
- ALL GATE VALVES ARE CLOCKWISE TO OPEN WITH A RED OPERATING NUT.
 - WATERMAIN TO BE INSTALLED BY TRENCHLESS METHODS.
 - BACKFILL IS CLASS 5 WITHIN BOULEVARD AND CLASS 3 WITHIN PAVEMENT/SIDEWALK OR WHEN WITHIN 1.0m OF PAVEMENT OR SIDEWALK.
 - WATER SERVICES ARE 19mm UNLESS OTHERWISE NOTED.
 - MINIMUM COVER TO TOP OF WATERMAIN SHALL BE 2.4m.
 - LOCATION OF ALL SERVICES TO BE CONFIRMED IN FIELD.
 - EXPOSE EXISTING WATERMAIN TO CONFIRM DEPTH PRIOR TO CONSTRUCTION.
 - ALL LEAD SERVICES TO BE RENEWED TO PROPERTY LINE.
 - SERVICES TO BE RENEWED SHALL BE REPLACED FROM WATERMAIN TO PROPERTY LINE. ALL OTHERS TO BE RECONNECTED.
 - SPRINKLER SERVICE AT 550 MUNROE AVE TO REMAIN IN SERVICE DURING CONSTRUCTION.



SEE DRAWING D-12105

METRIC
WHOLE NUMBERS INDICATE MILLIMETRES
DECIMALIZED NUMBERS INDICATE METRES



EXISTING	LEGEND - PLAN	PROPOSED	EXISTING	LEGEND - PLAN	PROPOSED	EXISTING	LEGEND - PROFILE	PROPOSED
—	WATERMAIN	—	—	REDUCER	—	—	WATERMAIN	—
⊕	HYDRANT VALVE	⊕	⊕	PLUG	⊕	⊕	VALVE	⊕
⊕	LAND DRAINAGE SEWER	⊕	⊕	TRAFFIC SIGNAL	⊕	⊕	LAND DRAINAGE SEWER	⊕
⊕	WASTE WATER SEWER	⊕	⊕	GAS	⊕	⊕	WASTE WATER SEWER	⊕
○	MANHOLE	○	○	HYDRO	○	○	JUNCTIONS	○
□	CATCH BASIN	□	□	M.T.S.	□	□	CULVERT	□
⊕	CURB STOP	⊕	⊕	C.B. LEAD	⊕	⊕		
⊕	TEE	⊕	⊕	SURVEY BAR	⊕	⊕		
⊕	BEND	⊕	⊕	TREE	⊕	⊕		
⊕	ANODE	⊕	⊕	H.P.	⊕	⊕		
				L.S.				
				LAMP STANDARD				

LOCATION APPROVED

B.M. ELEV. CWM 27-002 231.093

DESIGNED BY PR
DRAWN BY PR
HOR. SCALE: 1:250
VERT. SCALE: 1:50
DATE JUNE 2010

CHECKED BY SM
APPROVED BY IMcK
RELEASED FOR CONSTRUCTION
DATE JUNE 16, 2010

ENGINEERS SEAL
I. G. MCKINNON
CONSULTANT DRAWING NO. 010-051-13

THE CITY OF WINNIPEG
WATER AND WASTE DEPARTMENT

2010 CAPITAL WORKS
WATERMAIN RENEWALS
MUNROE AVENUE
GOLSPIE STREET TO 130M EAST OF GOLSPIE STREET

SHEET 1 OF 3
CITY DRAWING NO. D-12104

ACAD 2007