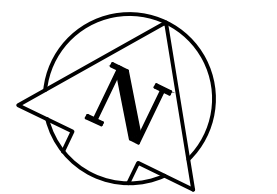


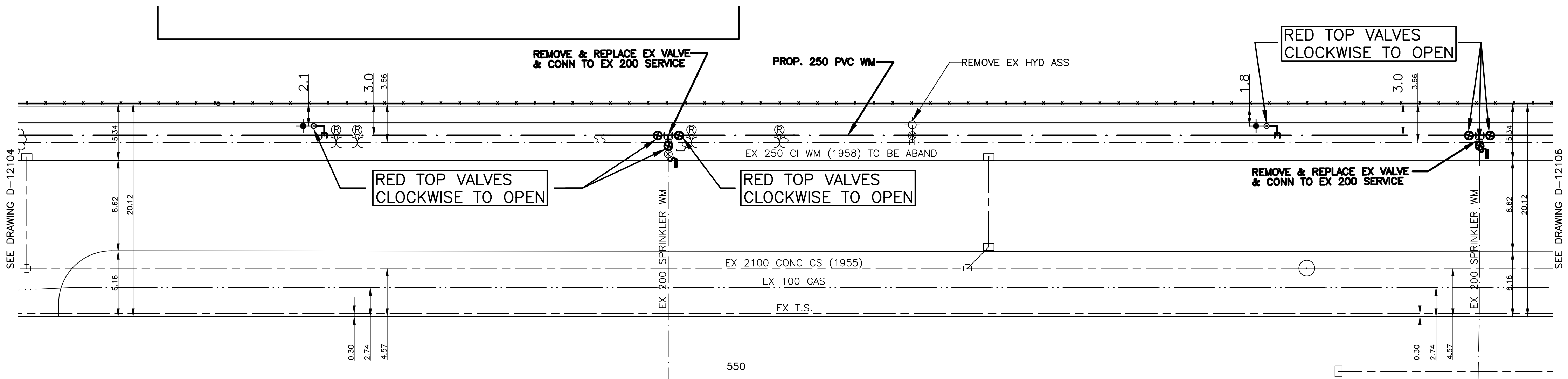
HOUSE WATER SERVICE INFORMATION					
ADDRESS & NATURE OF	SIZE (mm) & TYPE	SHORT & LONG	CORP LOCATION	REMARKS	
550 Munroe Avenue Commercial	37 Copper	21.6 W E/L BLDG 24.7 OUT FR GAR DR			
550 Munroe Avenue Sprinkler	200 Poly V	SEE REMARKS	22.6 W H 2ND E	Golspie	
550 Munroe Avenue Sprinkler	200	86.6 W E/L E BLDG 22.3 W E/L BLDG 4 S N/L MUNROE			

CHAINAGE ALONG NORTH PROPERTY LINE OF MUNROE AVENUE
MUNROE AVENUE



NOTES:

1. ALL GATE VALVES ARE CLOCKWISE TO OPEN WITH A RED OPERATING NUT.
2. WATERMAIN TO BE INSTALLED BY TRENCHLESS METHODS.
3. BACKFILL IS CLASS 5 WITHIN BOULEVARD AND CLASS 3 WHEN WITHIN PAVEMENT/SIDEWALK OR WHEN WITHIN 1.0m OF PAVEMENT OR SIDEWALK.
4. WATER SERVICES ARE 19mm UNLESS OTHERWISE NOTED.
5. MINIMUM COVER TO TOP OF WATERMAIN SHALL BE 2.4m.
6. LOCATION OF ALL SERVICES TO BE CONFIRMED IN FIELD.
7. EXPOSE EXISTING WATERMAIN TO CONFIRM DEPTH PRIOR TO CONSTRUCTION.
8. ALL LEAD SERVICES TO BE RENEWED TO PROPERTY LINE.
9. SERVICES TO BE RENEWED SHALL BE REPLACED FROM WATERMAIN TO PROPERTY LINE. ALL OTHERS TO BE RECONNECTED.
10. SPRINKLER SERVICE AT 550 MUNROE AVE TO REMAIN IN SERVICE DURING CONSTRUCTION.



METRIC
WHOLE NUMBERS INDICATE MILLIMETRES
DECIMALIZED NUMBERS INDICATE METRES



EXISTING	LEGEND - PLAN	PROPOSED	EXISTING	LEGEND - PLAN	PROPOSED	EXISTING	LEGEND - PROFILE	PROPOSED
---	WATERMAIN	---	---	REDUCER	---	---	WATERMAIN	---
⊕	HYDRANT VALVE	⊕	⊕	PLUG	⊕	⊕	VALVE	⊕
---	LAND DRAINAGE SEWER	---	---	TRAFFIC SIGNAL	---	---	LAND DRAINAGE SEWER	---
---	WASTE WATER SEWER	---	---	GAS	---	---	WASTE WATER SEWER	---
○	MANHOLE	○	---	HYDRO	---	---	JUNCTIONS	---
□	CATCH BASIN	□	---	M.T.S.	---	---	CULVERT	---
⊕	CURB STOP	⊕	---	C.B. LEAD	---	---		---
⊕	TEE	⊕	---	SURVEY BAR	---	---		---
⊕	BEND	⊕	---	TREE	---	---		---
⊕	ANODE	⊕	---	H.P.	---	---		---
			---	LAMP STANDARD	---	---		---

LOCATION APPROVED

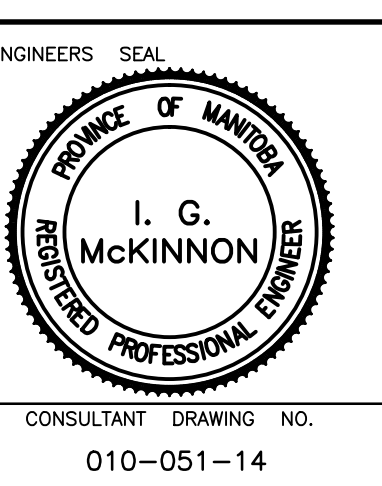
SUPV. U/G STRUCTURES DATE COMMITTEE

NOTE:
LOCATION OF UNDERGROUND STRUCTURES AS SHOWN ARE BASED ON THE BEST INFORMATION AVAILABLE BUT NO GUARANTEE IS GIVEN THAT ALL EXISTING UTILITIES ARE SHOWN OR THAT THE GIVEN LOCATIONS ARE EXACT. CONFIRMATION OF EXISTENCE AND EXACT LOCATION OF ALL SERVICES MUST BE OBTAINED FROM THE INDIVIDUAL UTILITIES BEFORE PROCEEDING WITH CONSTRUCTION.

B.M. ELEV.	CWBM 27-002	231.093
------------	-------------	---------

GENIVAR
10 PRAIRIE WAY WINNIPEG, MANITOBA R2J 3J8
PH: (204)-477-6650 FAX: (204)-474-2864

DESIGNED BY	PR	CHECKED BY	SM
DRAWN BY	PR	APPROVED BY	IMcK
HOR. SCALE:	1:250	RELEASED FOR CONSTRUCTION	ORIGINALLY SIGNED BY
VERT. SCALE:	1:50		K. ZUREK P. ENG
DATE	JUNE 2010	DATE	JUNE 16, 2010



Winnipeg THE CITY OF WINNIPEG WATER AND WASTE DEPARTMENT

2010 CAPITAL WORKS WATERMAIN RENEWALS MUNROE AVENUE
130M EAST OF GOLSPIE STREET TO 275M EAST OF GOLSPIE STREET

SHEET 2 OF 3
CITY DRAWING NO. D-12105