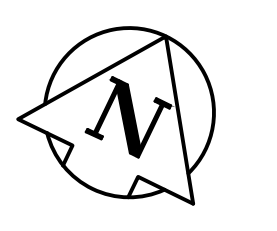


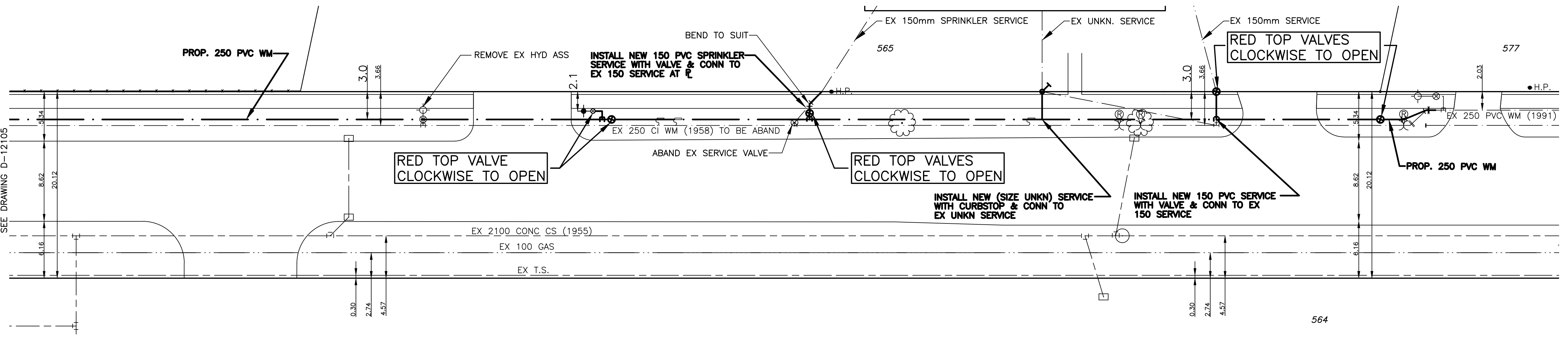
| HOUSE WATER SERVICE INFORMATION        |                  |                             |                |   |  |
|--|------------------|-----------------------------|----------------|---|--|
| ADDRESS & NATURE OF                    | SIZE (mm) & TYPE | SHORT & LONG                | CORP LOCATION  | REMARKS                                     |  |
| 564 Munroe Avenue Commercial           | 25 Copper        | 2.1 W BLDG LINE<br>19.2 OUT |                | SEWER JUNC: 65.4 W OF APPROACH TO RESIDENCE | WATER C/O @ MAIN                         |
| 565 Munroe Avenue Industrial           | 150              | 5.5 EEL OF OFFICE BLDG      | 23.2 W OF HYDT | WASHROOM                                    |  |
| 565 Munroe Avenue Industrial           |                  | 13.3 WEL OF BLDG            | 23.2 W OF HYDT | OFFICE                                      |  |
| 565 Munroe Avenue Industrial Sprinkler | 150              | 5.5 WWL OFFICE              |                | VALVE ON STREET LINE                        | REPAIR SPRINKLER LINE JUN/18/96 P#293997 |

CHAINAGE ALONG NORTH PROPERTY LINE OF MUNROE AVENUE

MUNROE AVENUE



- NOTES:**
- ALL GATE VALVES ARE CLOCKWISE TO OPEN WITH A RED OPERATING NUT.
  - WATERMAIN TO BE INSTALLED BY TRENCHLESS METHODS.
  - BACKFILL IS CLASS 5 WITHIN BOULEVARD AND CLASS 3 WHEN WITHIN PAVEMENT/SIDEWALK OR WHEN WITHIN 1.0m OF PAVEMENT OR SIDEWALK.
  - WATER SERVICES ARE 19mm UNLESS OTHERWISE NOTED.
  - MINIMUM COVER TO TOP OF WATERMAIN SHALL BE 2.4m.
  - LOCATION OF ALL SERVICES TO BE CONFIRMED IN FIELD.
  - EXPOSE EXISTING WATERMAIN TO CONFIRM DEPTH PRIOR TO CONSTRUCTION.
  - ALL LEAD SERVICES TO BE RENEWED TO PROPERTY LINE.
  - SERVICES TO BE RENEWED SHALL BE REPLACED FROM WATERMAIN TO PROPERTY LINE. ALL OTHERS TO BE RECONNECTED.
  - SPRINKLER SERVICE AT 550 MUNROE AVE TO REMAIN IN SERVICE DURING CONSTRUCTION.



METRIC  
WHOLE NUMBERS INDICATE MILLIMETRES  
DECIMALIZED NUMBERS INDICATE METRES



| EXISTING | LEGEND - PLAN       | PROPOSED | EXISTING | LEGEND - PLAN  | PROPOSED | EXISTING | LEGEND - PROFILE    | PROPOSED |
|----------|---------------------|----------|----------|----------------|----------|----------|---------------------|----------|
| ---      | WATERMAIN           | ---      | ---      | REDUCER        | ---      | ---      | WATERMAIN           | ---      |
| ⊕        | HYDRANT VALVE       | ⊕        | ⊕        | PLUG           | ⊕        | ⊕        | VALVE               | ⊕        |
| ---      | LAND DRAINAGE SEWER | ---      | ---      | TRAFFIC SIGNAL | ---      | ---      | LAND DRAINAGE SEWER | ---      |
| ---      | WASTE WATER SEWER   | ---      | ---      | GAS            | ---      | ---      | WASTE WATER SEWER   | ---      |
| ○        | MANHOLE             | ○        | ---      | HYDRO          | ---      | ---      | JUNCTIONS           | ---      |
| □        | CATCH BASIN         | □        | ---      | M.T.S.         | ---      | ---      | CULVERT             | ---      |
| ⊕        | CURB STOP           | ⊕        | ---      | C.B. LEAD      | ---      | ---      |                     | ---      |
| ⊕        | TEE                 | ⊕        | ---      | SURVEY BAR     | ---      | ---      |                     | ---      |
| ⊕        | BEND                | ⊕        | ---      | TREE           | ---      | ---      |                     | ---      |
| ⊕        | ANODE               | ⊕        | ---      | H.P.           | ---      | ---      |                     | ---      |
|          |                     |          | ---      | L.S.           | ---      | ---      |                     | ---      |
|          |                     |          | ---      | LAMP STANDARD  | ---      | ---      |                     | ---      |

LOCATION APPROVED

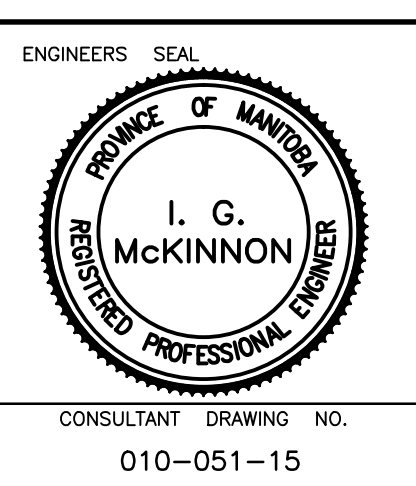
SUPV. U/G STRUCTURES DATE COMMITTEE

NOTE:  
LOCATION OF UNDERGROUND STRUCTURES AS SHOWN ARE BASED ON THE BEST INFORMATION AVAILABLE BUT NO GUARANTEE IS GIVEN THAT ALL EXISTING UTILITIES ARE SHOWN OR THAT THE GIVEN LOCATIONS ARE EXACT. CONFIRMATION OF EXISTENCE AND EXACT LOCATION OF ALL SERVICES MUST BE OBTAINED FROM THE INDIVIDUAL UTILITIES BEFORE PROCEEDING WITH CONSTRUCTION.

|            |                          |         |
|------------|--------------------------|---------|
| B.M. ELEV. | CWB# 27-002              | 231.093 |
| NO.        | REVISIONS                | DATE    |
| 1          | BID OPPORTUNITY 508-2010 | JUNE/10 |
|            |                          | PR      |
|            |                          | DATE    |

**GENIVAR**  
10 PRAIRIE WAY WINNIPEG, MANITOBA R2J 3J8  
PH: (204)-477-6650 FAX: (204)-474-2864

DESIGNED BY: PR  
CHECKED BY: SM  
DRAWN BY: PR  
APPROVED BY: IMcK  
HOR. SCALE: 1:250  
VERT. SCALE: 1:50  
RELEASED FOR CONSTRUCTION  
ORIGINALLY SIGNED BY  
K. ZUREK P. ENG  
DATE JUNE 16, 2010



Winnipeg THE CITY OF WINNIPEG WATER AND WASTE DEPARTMENT

2010 CAPITAL WORKS WATERMAIN RENEWALS MUNROE AVENUE  
275M EAST OF GOLSPIE STREET TO 107M WEST OF RALEIGH STREET

SHEET 3 OF 3  
CITY DRAWING NO. D-12106