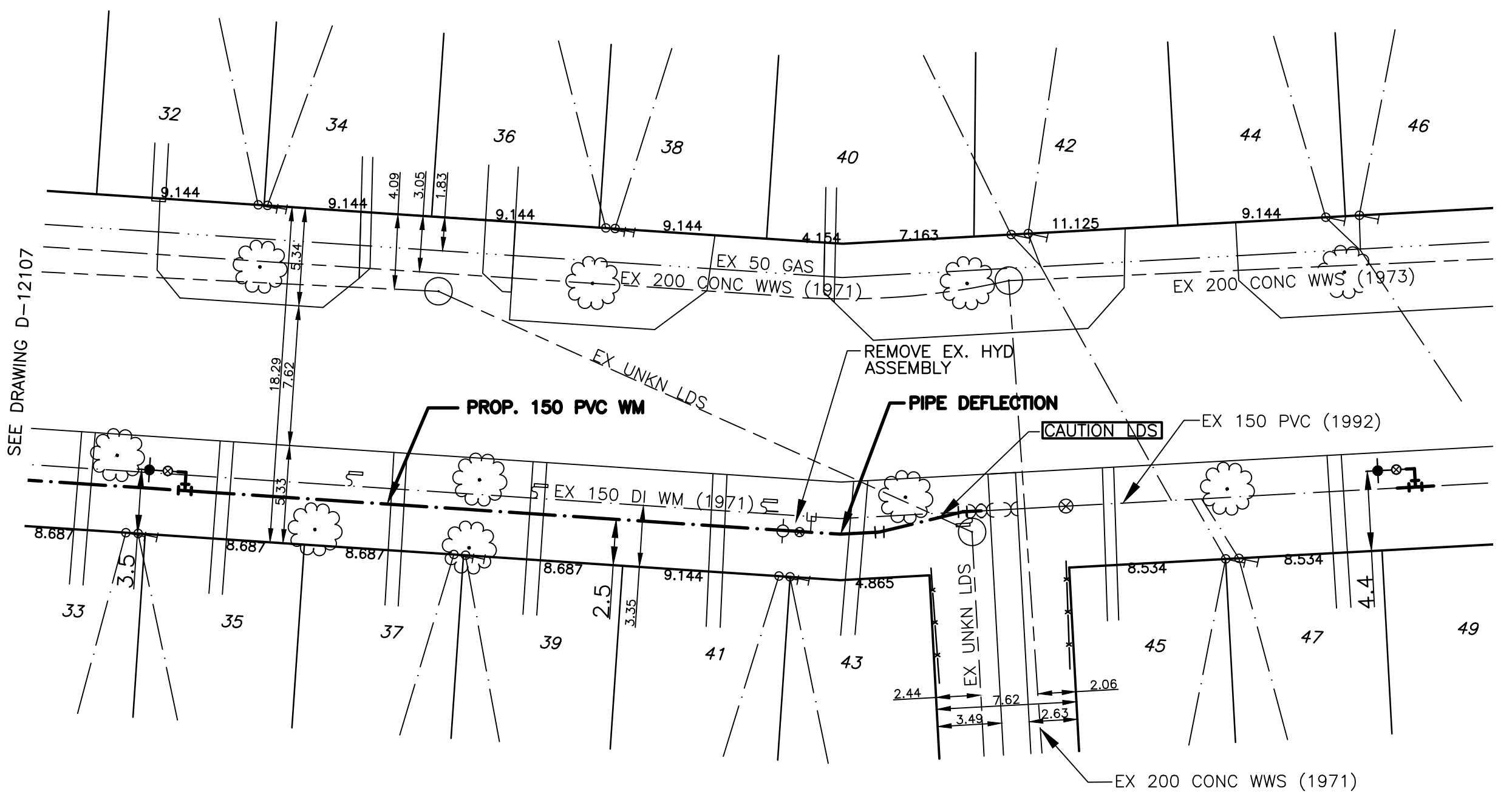


HOUSE WATER SERVICE INFORMATION				
ADDRESS & NATURE OF SERVICE	SIZE (mm) & TYPE	SHORT & LONG MEASUREMENT	CORP. LOCATION	REMARKS
32 Ravenhill Road Residential	25 Copper	5.5 N OF S HSE CORNER 10.1 FROM HSE FRONT		DBL SER WITH 34
33 Ravenhill Road Residential	25 Copper	5.5 N OF S HSE CORNER 8.4 OUT		DBL SER WITH 35
34 Ravenhill Road Residential	25 Copper	5.5 N OF S HSE CORNER 10.0 N		DBL SER WITH 32
35 Ravenhill Road Residential	25 Copper	6.1 S OF N HSE CORNER 5.3 S OF N HL		DBL SER WITH 33
36 Ravenhill Road Residential	25 Copper	6.5 N OF S HSE CORNER 7.8 FROM HSE FRONT		DBL SER WITH 38
37 Ravenhill Road Residential	25 Copper	6.9 W OF S HSE CORNER 8 FROM HSE FRONT		DBL SER WITH 39
38 Ravenhill Road Residential	25 Copper	6.9 N OF S HSE CORNER 8 FROM HSE FRONT		DBL SER WITH 36
39 Ravenhill Road Residential	19 Copper	6.3 N OF S HSE CORNER 7.8 FROM HSE FRONT		DBL SER WITH 37
40 Ravenhill Road Residential	19 Copper	4.1 S OF N HSE CORNER 7.8 HSE FRONT		DBL SER WITH 0.05 CORP MEAS & VALVE ON N LINE OF PUBLIC WALK WATERMAIN REN
41 Ravenhill Road Residential	19 Copper	4.1 S OF W HSE CORNER 5.8 FROM HSE FRONT		DBL SER WITH 43 TAV N/S 3/17/1/04
43 Ravenhill Road Residential	19 Copper	4.3 S OF N HSE CORNER 7.8 FROM HSE FRONT		DBL SER WITH 41 CANT TROFF

- NOTES:**
1. ALL GATE VALVES ARE COUNTER-CLOCKWISE TO OPEN WITH A BLACK OPERATING NUT.
 2. WATERMAIN TO BE INSTALLED BY TRENCHLESS METHODS.
 3. BACKFILL IS CLASS 5 WITHIN BOULEVARD AND CLASS 3 WHEN WITHIN PAVEMENT/SIDEWALK OR WHEN WITHIN 1.0m OF PAVEMENT OR SIDEWALK.
 4. WATER SERVICES ARE 19mm UNLESS OTHERWISE NOTED.
 5. MINIMUM COVER TO TOP OF WATERMAIN SHALL BE 2.4m.
 6. LOCATION OF ALL SERVICES TO BE CONFIRMED IN FIELD.
 7. EXPOSE EXISTING WATERMAIN TO CONFIRM DEPTH PRIOR TO CONSTRUCTION.
 8. ALL LEAD SERVICES TO BE RENEWED TO PROPERTY LINE.
 9. SERVICES TO BE RENEWED SHALL BE REPLACED FROM WATERMAIN TO PROPERTY LINE. ALL OTHERS TO BE RECONNECTED.



EXISTING	LEGEND - PLAN	PROPOSED	EXISTING	LEGEND - PLAN	PROPOSED	EXISTING	LEGEND - PROFILE	PROPOSED
---	WATERMAIN	---	---	REDUCER	---	---	150mm W.W.	---
+	HYDRANT VALVE	+	+	PLUG	+	---	150mm W.W.	---
---	LAND DRAINAGE SEWER	---	---	TRAFFIC SIGNAL	---	---	300mm L.D.S.	---
---	WASTE WATER SEWER	---	---	GAS	---	---	250mm W.W.S.	---
○	MANHOLE	○	---	HYDRO	---	---	250mm W.W.S.	---
□	CATCH BASIN	□	---	M.T.S.	---	---		---
⊥	CURB STOP	⊥	---	C.B. LEAD	---	---		---
+	TEE	+	---	SURVEY BAR	---	---		---
⊥	BEND	⊥	---	TREE	---	---		---
+	ANODE	+	---	H.P.	---	---		---
---		---	---	L.S.	---	---		---
---		---	---	LAMP STANDARD	---	---		---

LOCATION APPROVED

SUPV. U/G STRUCTURES DATE COMMITTEE

NOTE: LOCATION OF UNDERGROUND STRUCTURES AS SHOWN ARE BASED ON THE BEST INFORMATION AVAILABLE BUT NO GUARANTEE IS GIVEN THAT ALL EXISTING UTILITIES ARE SHOWN OR THAT THE GIVEN LOCATIONS ARE EXACT. CONFIRMATION OF EXISTENCE AND EXACT LOCATION OF ALL SERVICES MUST BE OBTAINED FROM THE INDIVIDUAL UTILITIES BEFORE PROCEEDING WITH CONSTRUCTION.

B.M. ELEV. C.W.M. 11-030 231.350

GENIVAR
10 PRAIRIE WAY WINNIPEG, MANITOBA R2J 3J8
PH: (204)-477-6650 FAX: (204)-474-2864

DESIGNED BY: LV/PR
CHECKED BY: SM

DRAWN BY: LV
APPROVED BY: IMcK

HOR. SCALE: 1:250
VERT. SCALE: 1:50

RELEASED FOR CONSTRUCTION: K. ZUREK P. ENG
DATE: JUNE 16, 2010

ENGINEERS SEAL

PROVINCE OF MANITOBA REGISTERED PROFESSIONAL ENGINEER

I. G. MCKINNON

CONSULTANT DRAWING NO. 010-051-17

THE CITY OF WINNIPEG
WATER AND WASTE DEPARTMENT

2010 CAPITAL WORKS
WATERMAIN RENEWALS
RAVENHILL ROAD

80M NORTH OF TOMLINSON AVENUE TO
150M NORTH OF TOMLINSON AVENUE

SHEET 2 OF 2
CITY DRAWING NO. D-12108

