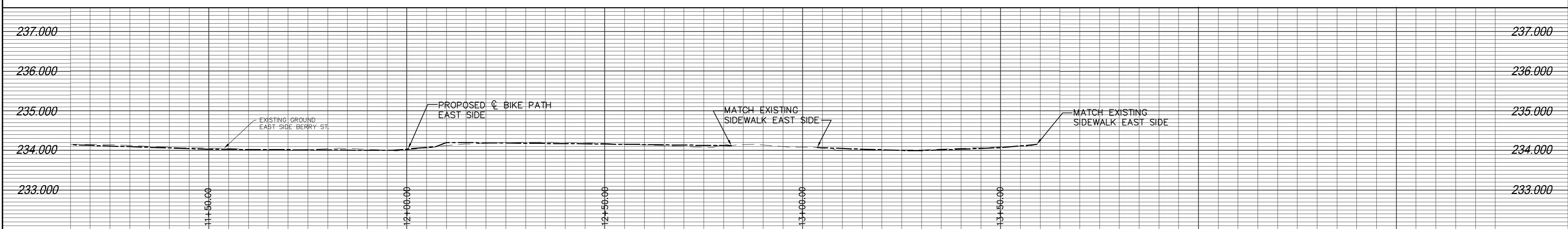
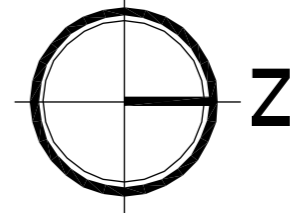
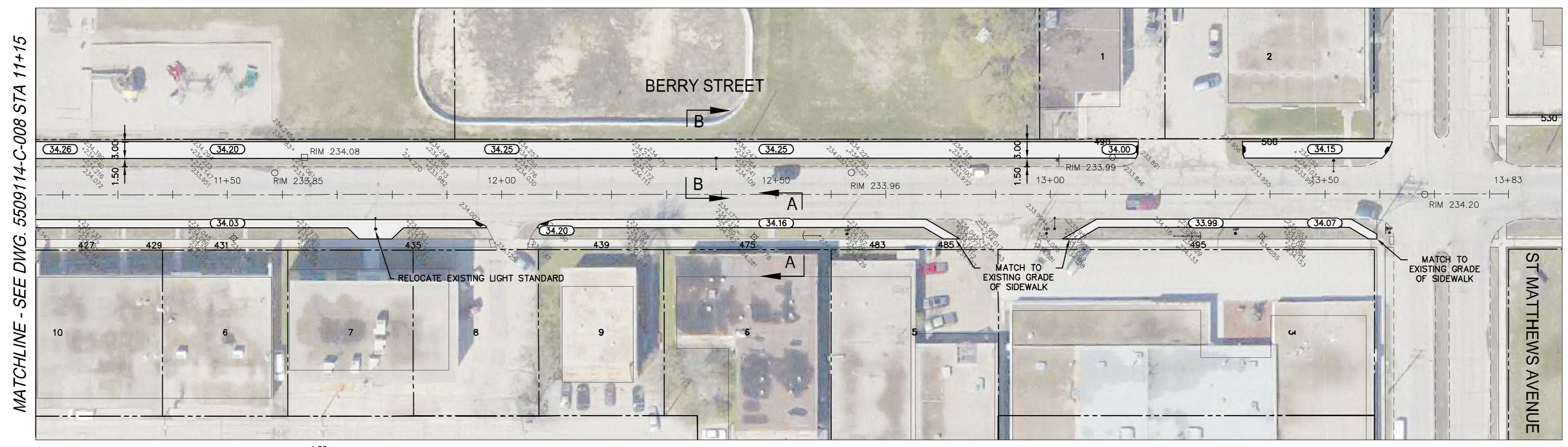


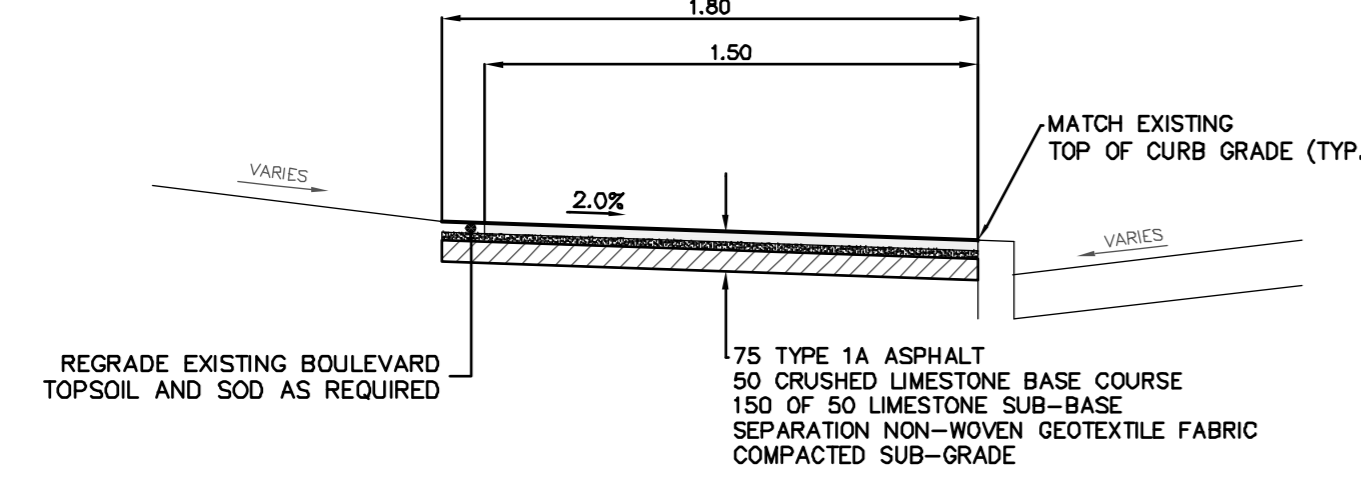
BERRY ST. WEST SIDE PATHWAY



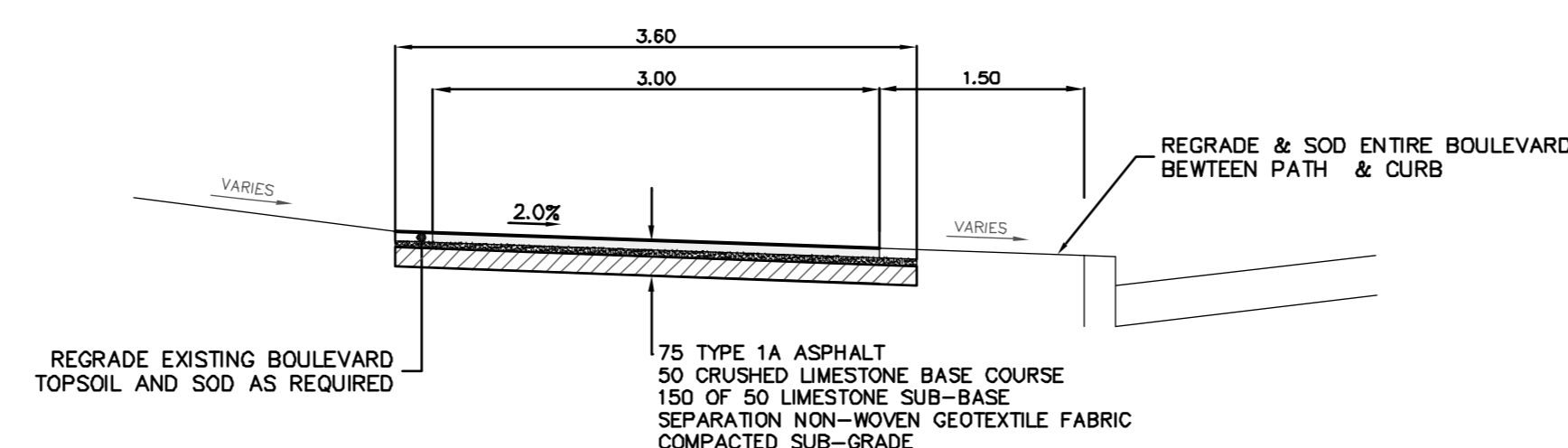
BERRY ST. EAST SIDE PATHWAY



MATCHLINE - SEE DWG. 5509114-C-008 STA 11+15



SECTION A-A
SCALE N.T.S.



SECTION B-B
SCALE N.T.S.

NOTES:

1. ALL WORK AND MATERIALS TO BE IN ACCORDANCE WITH THE LATEST REVISIONS OF THE CITY OF WINNIPEG STANDARD CONSTRUCTION SPECIFICATIONS.
2. CONTRACTOR TO VERIFY DEPTH OF UTILITIES PRIOR TO CONSTRUCTION.
3. LOCATION OF UNDERGROUND STRUCTURES AS SHOWN ARE BASED ON THE BEST INFORMATION AVAILABLE, BUT NO GUARANTEE IS GIVEN THAT ALL EXISTING UTILITIES ARE SHOWN OR THAT THE GIVEN LOCATIONS ARE EXACT. CONFIRMATION OF EXISTENCE AND EXACT LOCATION OF ALL SERVICES MUST BE OBTAINED FROM THE INDIVIDUAL UTILITIES BEFORE PROCEEDING WITH CONSTRUCTION.
4. EXCAVATED MATERIAL TO BE USED AS BACKFILL WHERE REQUIRED.
5. ALL SURFACES TO BE MAINTAINED OR RESTORED TO PREVIOUS CONDITION OR BETTER.



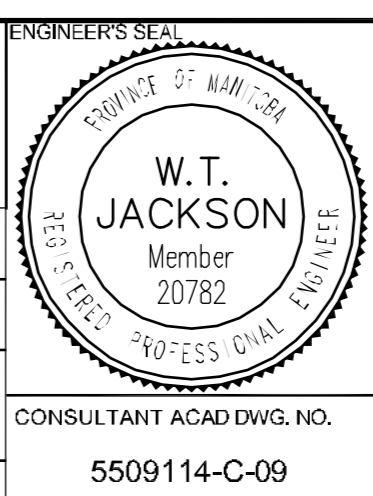
METRIC
WHOLE NUMBERS INDICATE MILLIMETERS
DECIMALIZED NUMBERS INDICATE METERS

231.99	ELEVATION	(32.50)	HYDRANT	---	EXISTING GROUND	---	PROPOSED CENTERLINE	---
○	WATER VALVE	●						
○	MANHOLE	●						
□	CATCH BASIN	■						
---	MTS CABLE							
---	LDS							
---	WWS							
---	WATER							
---	PROPERTY LINE							
HP	HYDRO POLE							
HP	HYDRO POLE WITH LIGHT							
EXISTING	LEGEND-PLAN	PROPOSED	EXISTING	LEGEND-PLAN	PROPOSED	EXISTING	LEGEND-PROFILE	PROPOSED

LOCATIONS APPROVED	
UNDERGROUND STRUCTURES	SIGNED BY: _____ DATE: _____
SUPV U/G STRUCTURES	DATE: _____

G.B.M. 1BLT IN 3.7m CONC PILE, 3.7m N OF S.L. OF PORTAGE AVE. & 3.4m E OF LINE OF W.L. OF KING EDWARD ST.	ELEV. 235.437m
4 -	-
3 -	-
2 -	CROSS SECTION & BIKE PATH 12.07.10 RP
1 -	ISSUED FOR REVIEW 29.06.10 WTJ
NO. REVISIONS	DATE BY

MMM GROUP	
DESIGNED BY: RP	CHECKED BY: _____
DRAWN BY: TR	APPROVED BY: WTJ
HOR. SCALE 1:500	RELEASED FOR CONSTRUCTION
VERTICAL 1:50	DATE: 04.06.10



ENGINEERS SEAL

MMM Group Limited
Suite 111 - 93 Lombard Ave
Winnipeg, MB R2S 3B1
T: 204.943.3179
F: 204.943.4948
www.mmm.ca

CITY OF WINNIPEG
PUBLIC WORKS DEPARTMENT
TRANSPORTATION ENGINEERING DIVISION

2010 ACTIVE TRANSPORTATION/
INFRASTRUCTURE STIMULUS PROGRAM
BERRY AVENUE - PORTAGE AVENUE TO ST. MATTHEW AVENUE

BIKE PATH
STA. 11+15.00 TO 13+62.49

C-09

SHEET 4 OF 4

Jul 12, 2010 10:32:56am P:\5509114-C-008\5509114-000_2010 Active Transportation Infrastructure Stimulus Program\MMM Drawings\Berry\5509114_berry_120710.dwg -tab:Berry C-09 11+15 to 13+62.49