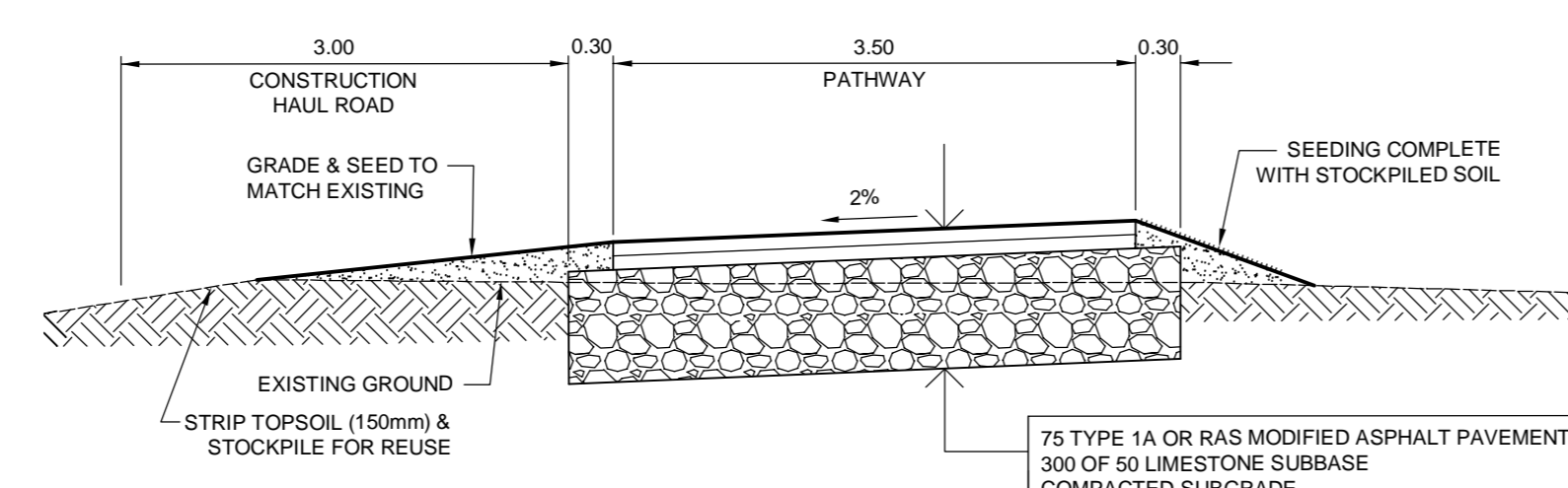
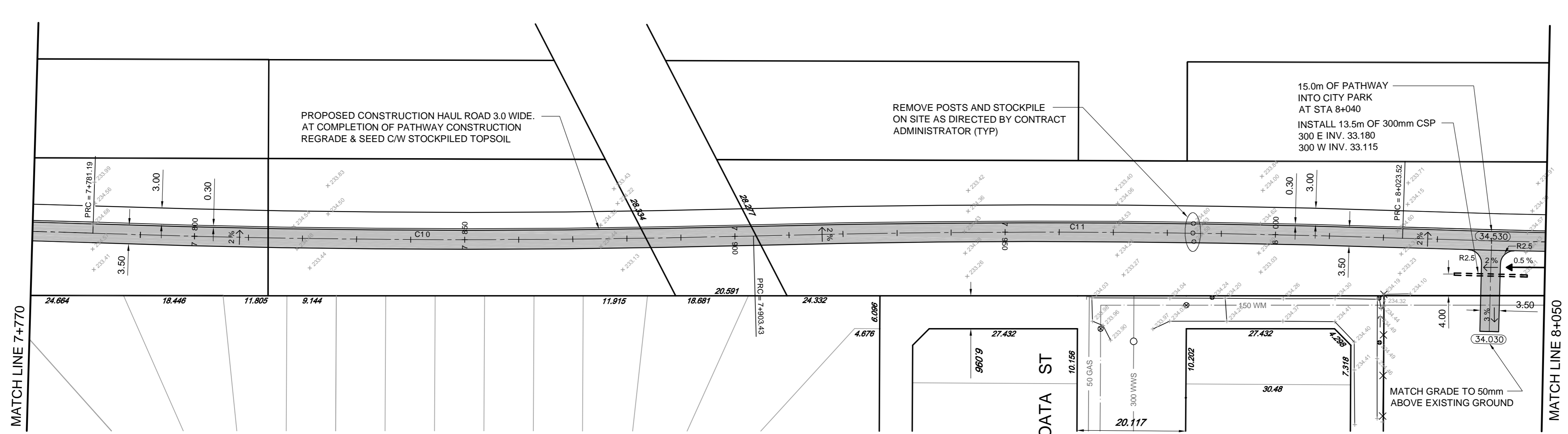


CURVE	RADIUS	TANGENT	DELTA	LENGTH
C10	2001.00	61.14	3°30'00"	122.23
C11	1999.00	60.06	3°26'32"	120.09

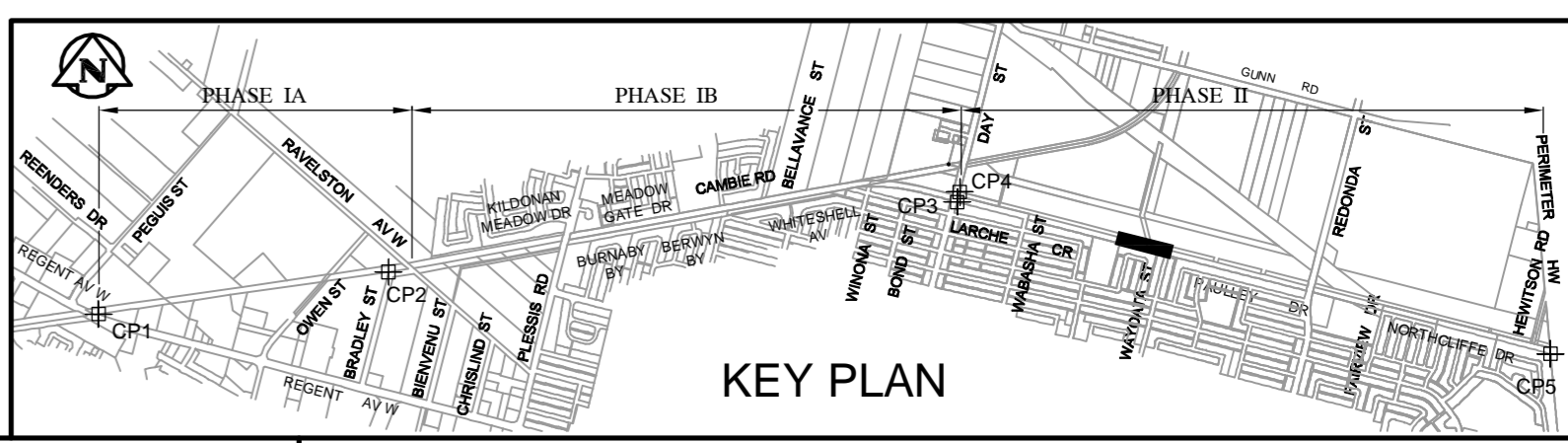
Description	Northing	Easting
PRC = 7+781.19	5530371.4502	644210.7263
PRC = 7+903.43	5530373.3846	644332.9258
PRC = 8+023.52	5530375.3458	644452.9842



1 PATH SECTION STA 7+380 TO REDONDA STREET
HOR 1:50, VER 1:20

No.	NAD 83 Grid Coordinate	Description
CP1	5528842.152 639868.658	IRON BAR
CP2	5529368.017 641068.147	IRON BAR
CP3	5530344.824 643436.566	IRON BAR
CP4	5530372.228 643436.161	IRON BAR
CP5	5530394.867 646173.994	IRON BAR

APEGM
Certificate of Authorization
Wardrop Engineering Inc.
No. 195 Expiry: April 30, 2011



150 WM	WATERMAIN	150 WM	SWALE	TRAFFIC SIGNAL
400 FM	FEEDERMAIN	400 FM	MANHOLE	GAS
300 LDS	LAND DRAINAGE SEWER	300 LDS	CATCHBASIN	HYDRO
250 WWS	WASTEWATER SEWER	250 WWS	HYDRO BOX	MTS
300 CS	COMBINED SEWER	300 CS	HYDRO POLE	SPRINKLER
200 FCM	FORCEMAIN	200 FCM	LIGHT STANDARD	ELEVATION
	JUNCTIONS		ANCHOR	SIDEWALK
	HYDRANT		TREE	CURB
	VALVE		SURVEY BAR	ASPHALT
	CURB STOP		SIGNAL CONTROLLER	CONCRETE
EXISTING	LEGEND-PLAN	PROPOSED	EXISTING	LEGEND-PLAN

LOCATION APPROVED UNDERGROUND STRUCTURES
SUPV. U/G STRUCTURES COMMITTEE DATE
NOTE: LOCATION OF UNDERGROUND STRUCTURES AS SHOWN ARE BASED ON THE BEST INFORMATION AVAILABLE. BUT NO GUARANTEE IS GIVEN THAT ALL EXISTING UTILITIES ARE SHOWN OR THAT THE GIVEN LOCATIONS ARE EXACT. CONFIRMATION OF EXISTENCE AND EXACT LOCATION OF ALL SERVICES MUST BE OBTAINED FROM THE INDIVIDUAL UTILITIES BEFORE PROCEEDING WITH CONSTRUCTION.

NO.	REVISIONS	DATE	BY	DATE
00	ISSUED FOR TENDER	10.07.13	DAL	

WARDROP PEOPLE. PASSION. PERFORMANCE. TRUSTED GLOBALLY.
DESIGNED BY TF CHECKED BY
DRAWN BY NL APPROVED BY
HOR. SCALE: 1 : 500
VERTICAL: 1 : 20
RELEASED FOR CONSTRUCTION

PRELIMINARY DRAWING
NOT TO BE USED FOR CONSTRUCTION
CONSULTANT DRAWING NO. 1000070100-DWG-C1020-00

THE CITY OF WINNIPEG
PUBLIC WORKS DEPARTMENT
ENGINEERING DIVISION
2010 ACTIVE TRANSPORTATION / INFRASTRUCTURE STIMULUS PROGRAM
TRANCONA TRAIL MULTI USE PATHWAY
194m WEST OF WAYOATA STREET
TO 56m EAST OF WAYOATA STREET
CITY DRAWING NUMBER
SHEET 20 OF 31
C1020