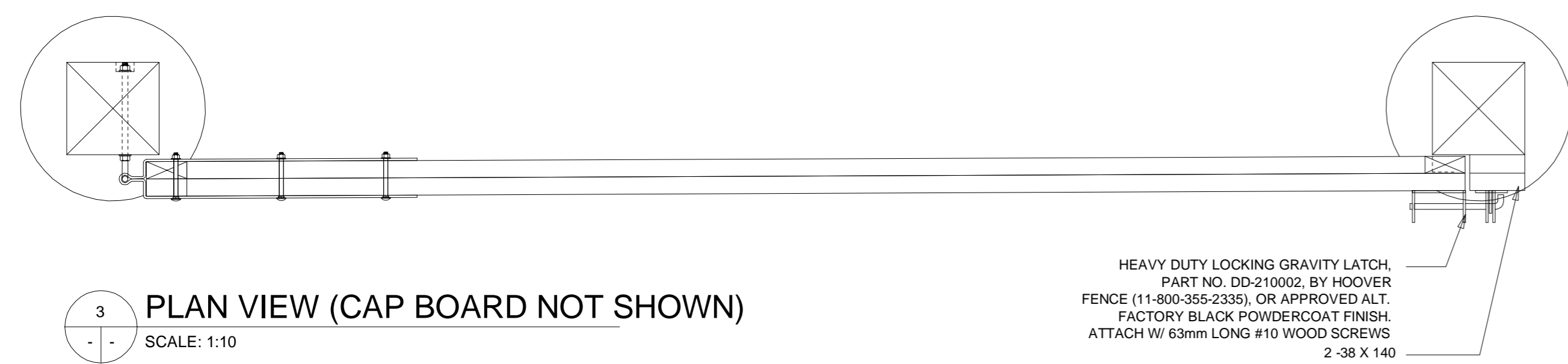
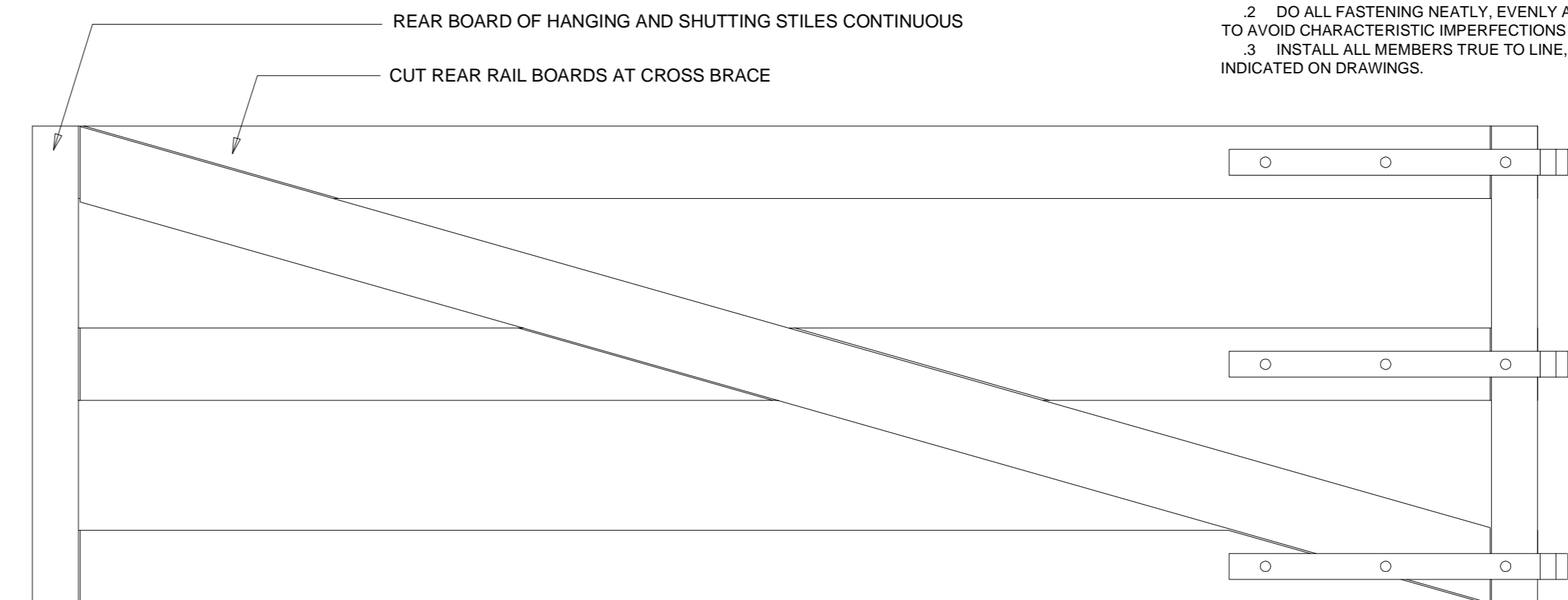


6 GATE AND POST ELEVATION
SCALE: 1:25



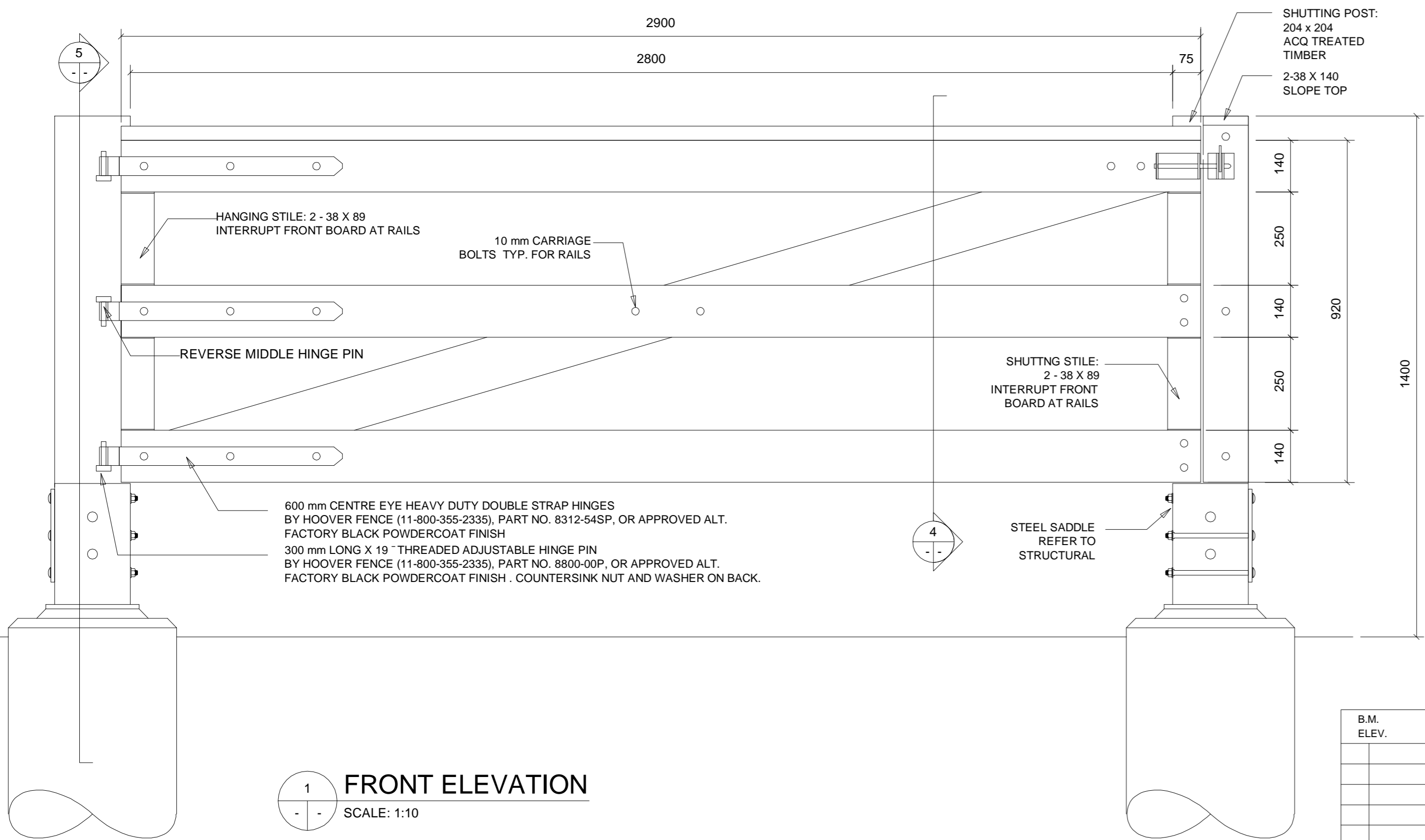
3 PLAN VIEW (CAP BOARD NOT SHOWN)
SCALE: 1:10



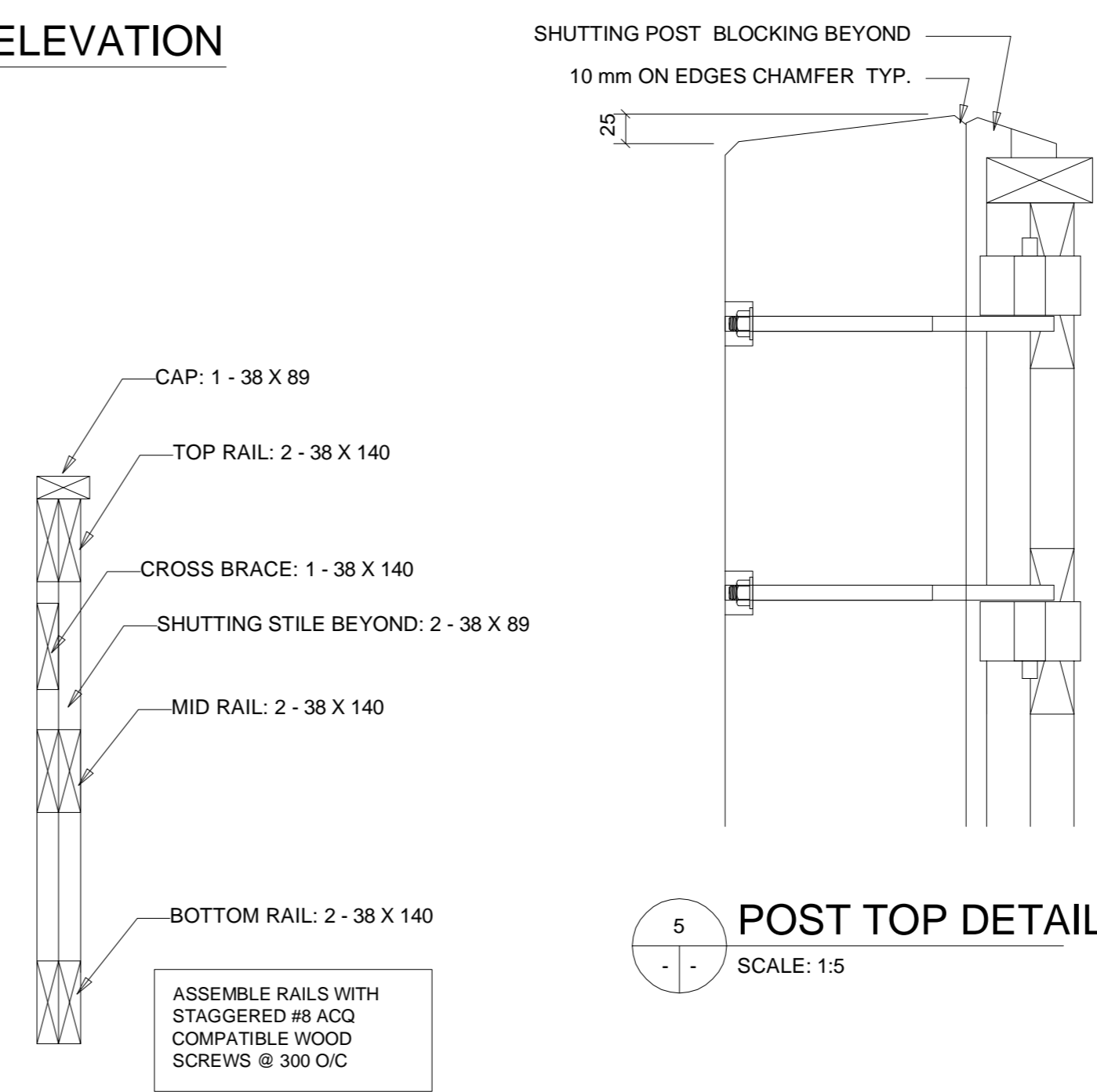
2 REAR ELEVATION
SCALE: 1:10

WOOD STAIN

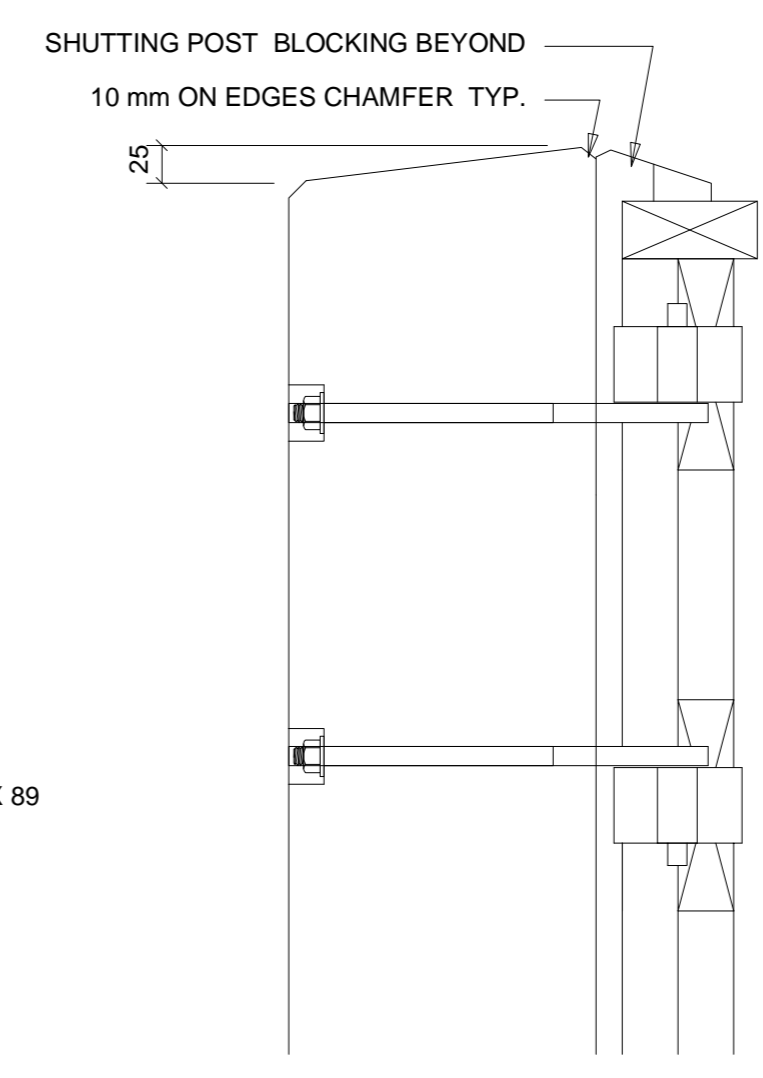
1. ALL EXPOSED WOOD SURFACES TO BE STAINED WITH TWO (2) COATS FLOOD SOLID COLOUR DECK AND SIDING STAIN, COLOUR: #428 PEBBLESTONE CLAY. APPLY STAIN IN ACCORDANCE WITH MANUFACTURER'S WRITTEN INSTRUCTIONS. STAIN TO BE FREE OF SAGS, RUNS, AND DRIPS. MASK OR OTHERWISE PROTECT SURROUNDING MATERIALS NOT TO BE PAINTED FROM SPATTERS, MARKINGS AND OTHER DAMAGE. NOTIFY PEDESTRIANS WITH WET PAINT SIGNS.
2. STAIN TO EXTEND MIN. 150 MM BELOW FINISH GRADE.



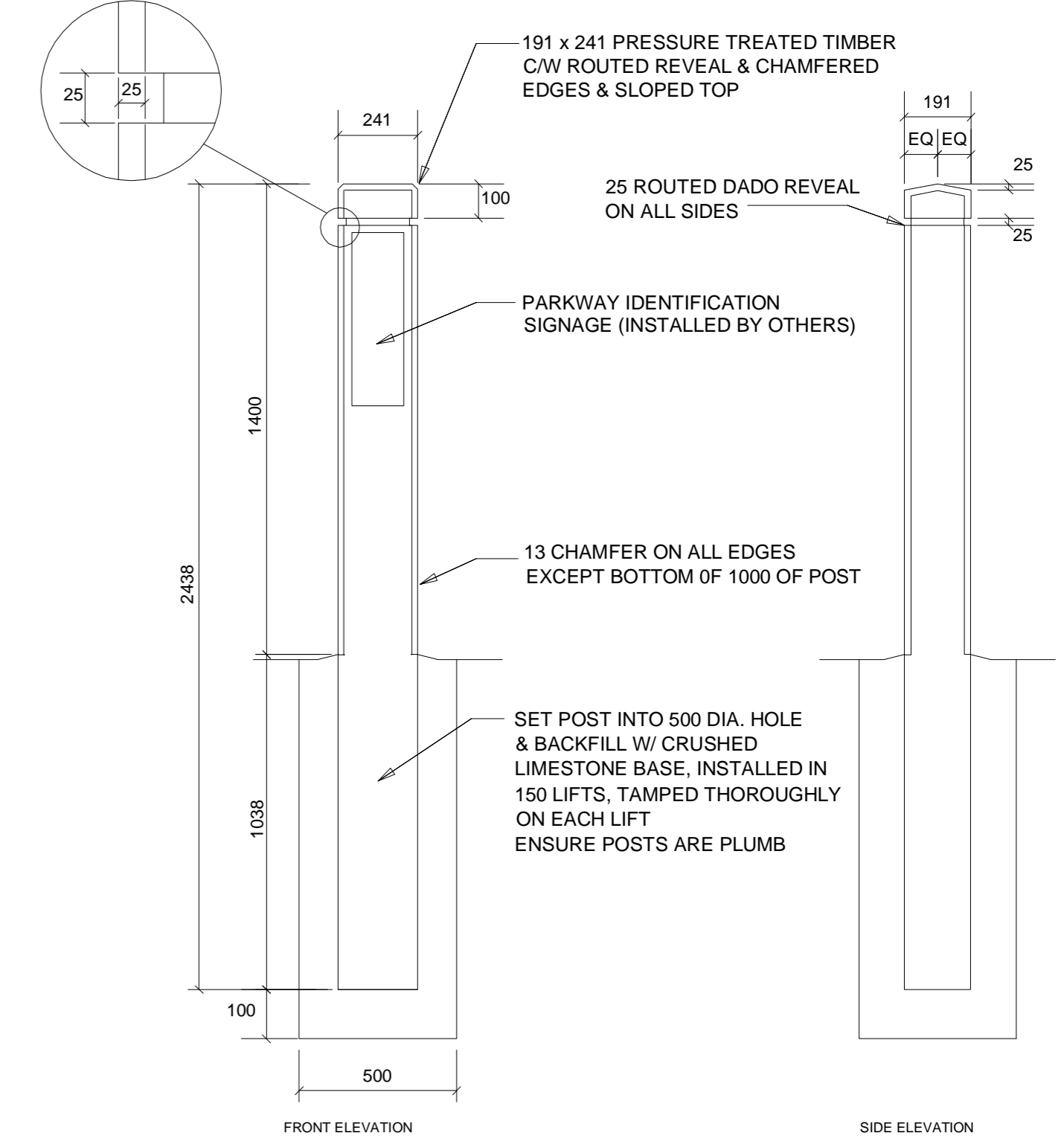
1 FRONT ELEVATION
SCALE: 1:10



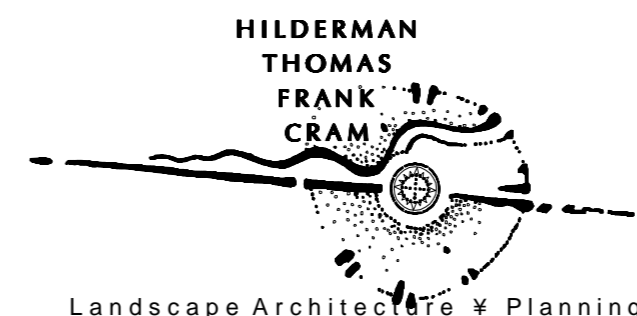
4 SECTION
SCALE: 1:10



5 POST TOP DETAIL
SCALE: 1:5



7 TIMBER SIGN BOLLARD
NTS



B.M. ELEV.					
		PEOPLE, PASSION, PERFORMANCE. TRUSTED GLOBALLY			
DESIGNED BY	RGM	CHECKED BY	RGM		
DRAWN BY	RGM	APPROVED BY			
HOR. SCALE: AS NOTED		RELEASED FOR CONSTRUCTION			
VERTICAL:					
00 ISSUED FOR TENDER	10.07.13	RGM		CONSULTANT DRAWING NO. 1000070100-DWG-C1030-00	
NO. REVISIONS	DATE	BY	DATE		

THE CITY OF WINNIPEG
PUBLIC WORKS DEPARTMENT
ENGINEERING DIVISION

2010 ACTIVE TRANSPORTATION / INFRASTRUCTURE STIMULUS PROGRAM

PATHWAY DETAILS

CITY DRAWING NUMBER
SHEET 30 OF 31
C1030

- GENERAL NOTES**
1. THE CONTRACTOR WILL COORDINATE INSTALLATION WITH CONTRACT ADMINISTRATOR AND SHALL BE RESPONSIBLE FOR OBTAINING ALL NECESSARY CLEARANCES.
- ROUGH CARPENTRY**
1. IDENTIFY LUMBER BY OFFICIAL GRADE MARK CONTINUING SYMBOL OF GRADING AGENCY, MILL NUMBER OR NAME, GRADE OF LUMBER, SPECIES OR SPECIES GROUPING OR COMBINATION DESIGNATION, RULES UNDER WHICH GRADE AND CONDITIONS OF SEASONING AT TIME OF MANUFACTURE.
 2. COLLECT AND REMOVE FROM SITE ALL WASTE PIECES AND SAWDUST FROM PRESSURE TREATED WOOD MATERIALS. DISPOSE OF IN ACCORDANCE WITH LOCAL REGULATIONS. DO NOT BURN.
 3. PRESSURE TREATED WOOD: TO CSA 080, PRESSURE TREATED PINE OR FIR TO NATIONAL LUMBER GRADES AUTHORITY, SELECT GRADE 2 AND BETTER. ALL DRIED TO A MAXIMUM MOISTURE CONTENT OF 20% PRIOR TO TREATING. NON-INCISED, ACO TREATMENT TO MINIMUM RETENTION OF 4.0 KG/M3 FOR ABOVE GROUND USE AND 6.4 KG/M3 FOR GROUND CONTACT.
 4. ALL WOOD: TO BE FREE OF DEFECTS, ANY WARPED, CHECKED OR BENT MATERIALS WILL BE REJECTED.
 5. HARDWARE: BOLTS, NUTS, WASHERS, LAG SCREWS, TO BE HOT DIPPED GALVANIZED, SIZES TO SUIT APPLICATION. WOOD SCREWS CORROSION RESISTANT AND COMPATIBLE WITH ACO PRESSURE TREATED WOOD.
 6. PRESERVATIVE: CLEAR TYPE TO CSA080
 7. PREPARATION: OBTAIN CONSULTANT'S APPROVAL OF ROUGH GRADES PRIOR TO CONSTRUCTION.
 8. HANDLING AND USE OF TREATED TIMBER
 1. HANDLE AND USE TREATED MATERIAL IN A MANNER WHICH WILL AVOID DAMAGE OR FIELD FABRICATION CAUSING ALTERATION IN ORIGINAL TREATMENT.
 2. TREAT IN FIELD, CUTS AND DAMAGES TO SURFACE OF TREATED MATERIAL WITH AN APPROPRIATE, CLEAR PRESERVATIVE AS DESCRIBED IN CSA 080.1974. ENSURE THAT DAMAGED AREAS SUCH AS ABRASIONS, NAIL SPIKE HOLES, ARE THOROUGHLY SATURATED WITH FIELD TREATMENT SOLUTIONS AS PER CSA 080.
 9. WORKMANSHIP
 1. CONSTRUCT ALL WORK ACCORDING TO DETAILS, USING ADEQUATE FASTENING METHODS TO ENSURE SOLID, DURABLE FINISHED WORK SUITABLE FOR THE PURPOSE INTENDED.
 2. DO ALL FASTENING NEATLY, EVENLY AND THOROUGHLY THROUGH SOUND WOOD, SORTING AND SELECTING TO AVOID CHARACTERISTIC IMPERFECTIONS LIKE KNOTS AND CHECKS.
 3. INSTALL ALL MEMBERS TRUE TO LINE, LEVELS AND ELEVATIONS. SET PLUMB AND SPACE UNIFORMLY AS INDICATED ON DRAWINGS.