

**Canada-Manitoba
Infrastructure Program**

**Programme Infrastructures
Canada-Manitoba**

Canada

Manitoba



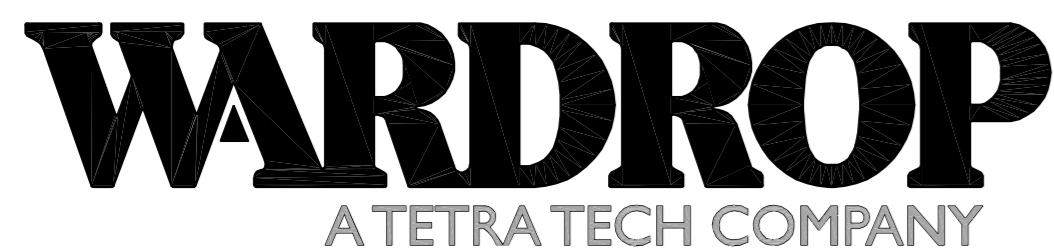
THE CITY OF WINNIPEG

PUBLIC WORKS DEPARTMENT

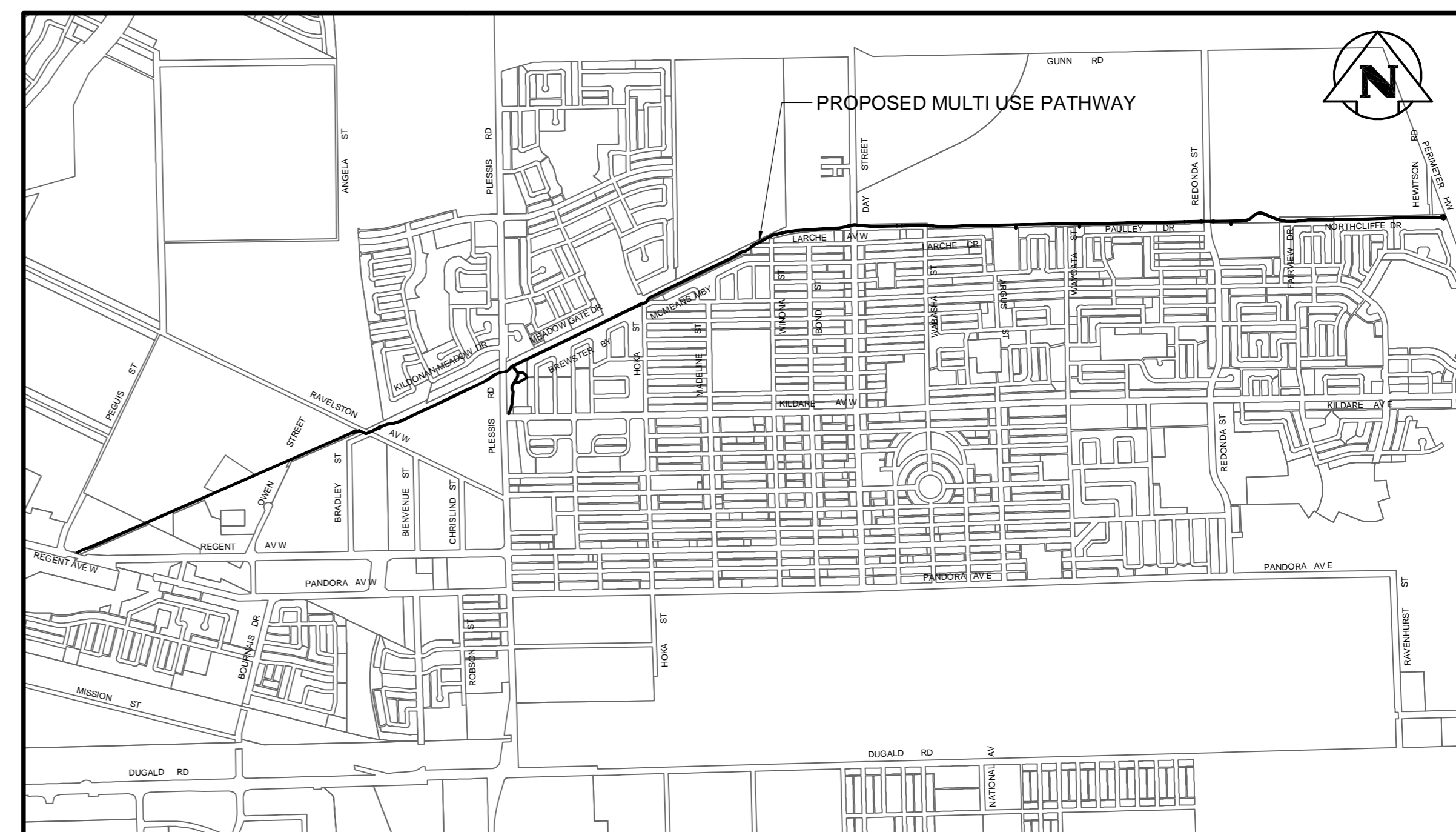
BID OPPORTUNITY: 524-2010

2010 ACTIVE TRANSPORTATION/ INFRASTRUCTURE STIMULUS PROGRAM

TRANSCONA TRAIL MULTI USE PATHWAYS



PEOPLE, PASSION, PERFORMANCE.
TRUSTED GLOBALLY



DRAWING INDEX

C1001	REGENT AVENUE TO 200m EAST OF REGENT AVENUE	C1016	130m EAST OF WINONA STREET TO DAY STREET
C1002	200m EAST OF REGENT AVENUE TO STA 1+500	C1017	FROM DAY STREET TO 71m WEST OF WABASHA STREET
C1003	FROM STA 1+500 TO 276m WEST OF OWEN STREET	C1018	71m WEST OF WABASHA STREET TO 168m EAST OF WABASHA STREET
C1004	276m WEST OF OWEN STREET TO 8m EAST OF OWEN STREET	C1019	168m EAST OF WABASHA STREET TO 194m WEST OF WAYOATA STREET
C1005	8m EAST OF OWEN STREET TO 80m WEST OF RAVELSTON AVENUE	C1020	194m WEST OF WAYOATA STREET TO 56m EAST OF WAYOATA STREET
C1006	80m WEST OF RAVELSTON AVENUE TO RAVELSTON AVENUE	C1021	56m EAST OF WAYOATA STREET TO STATION 8+310
C1007	RAVELSTON AVENUE WEST TO 208m EAST OF RAVELSTON AVENUE W	C1022	STATION 8+310 TO 47m WEST OF REDONDA STREET
C1008	208m EAST OF RAVELSTON AVENUE W TO 160m WEST OF PLESSIS ROAD	C1023	47m WEST OF REDONDA STREET TO 200m EAST OF REDONDA STREET
C1009	160m WEST OF PLESSIS ROAD TO PLESSIS ROAD	C1024	200m EAST OF REDONDA STREET TO 130m EAST OF FAIRVIEW DRIVE
C1010	PLESSIS ROAD TO 250m EAST OF PLESSIS ROAD	C1025	130m EAST OF FAIRVIEW DRIVE TO STATION 9+400
C1011	250m EAST OF PLESSIS ROAD TO 200m WEST OF HOKA STREET	C1026	STATION 9+400 TO 23m WEST OF HEWITSON ROAD
C1012	200m WEST OF HOKA STREET TO HOKA STREET	C1027	23m WEST OF HEWITSON ROAD TO PERIMETER HIGHWAY
C1013	HOKA STREET TO 210m EAST OF McMEANS AVENUE W	C1028	ROTARY HERITAGE PARK PATHWAY FROM STA 0+100 TO STA 0+220
C1014	210m EAST OF McMEANS AVENUE W TO 148m WEST OF WINONA STREET	C1029	ROTARY HERITAGE PARK PATHWAY FROM STA 0+220 TO KILDARE AVENUE WEST
C1015	148m WEST OF WINONA STREET TO 130m EAST OF WINONA STREET	C1030	PATHWAY DETAILS
		S1001	TYPICAL FENCE POST DETAILS