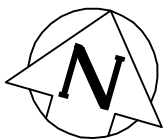
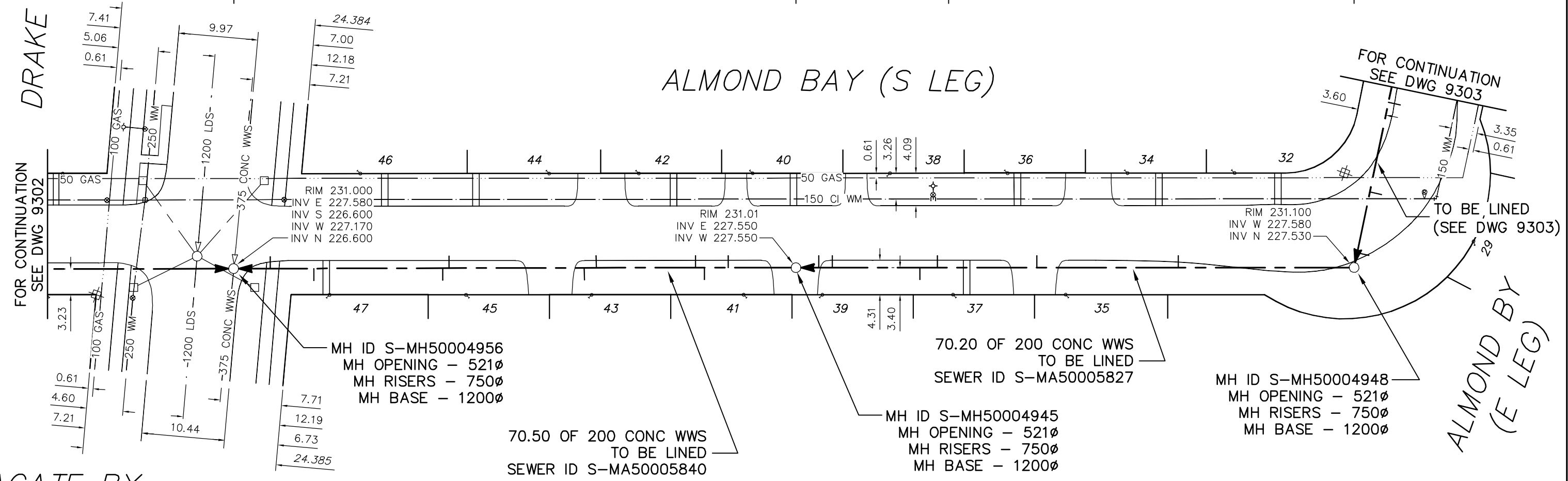


DRAKE BLVD



70.50 PARTIALLY DETERIORATED OVALITY = 3.0%
 51.0 FULLY DETERIORATED OVALITY = 5.0%
 19.20 FULLY DETERIORATED OVALITY = 10.0%

ALMOND BAY (S LEG)



AGATE BY (N LEG)

SEWER JUNCTION INFORMATION FROM SEWER VIDEO INSPECTION SEWER ID S-MA50005840				
DISTANCE FROM MH ID S-MH50004956				
4.6	E	150Ø	NORTH	JN
10.1	E	150Ø	SOUTH	JN
26.3	E	150Ø	SOUTH	JN
27.1	E	150Ø	NORTH	JN
44.1	E	150Ø	SOUTH	JN
45.6	E	150Ø	NORTH	CNI
58.1	E	150Ø	NORTH	JN
59.2	E	150Ø	SOUTH	CNI

SEWER JUNCTION INFORMATION FROM SEWER VIDEO INSPECTION SEWER ID S-MA50005840				
DISTANCE FROM MH ID S-MH50004945				
8.5	W	150Ø	NORTH	JN

SEWER JUNCTION INFORMATION FROM SEWER VIDEO INSPECTION SEWER ID S-MA50005827				
DISTANCE FROM MH ID S-MH50004948				
22.1	W	150Ø	NORTH	CNI
39.9	W	150Ø	NORTH	JN
52.4	W	150Ø	NORTH	CNI
54.6	W	150Ø	SOUTH	CNI
65.6	W	150Ø	SOUTH	CNI
67.3	W	150Ø	SOUTH	CNI

ENGINEER'S SEAL

ORIGINAL SIGNED BY
 S.R.J. COURNOYER
 10/07/06

BID OPPORTUNITY: 525-2010
 FILENAME : 9304.dwg
 PLOT DATE : 2010 07 07

LEGEND:
 52.0 | MEASUREMENT TO REPAIR FROM REFERENCE MH SHOWN THUS... 0.0

METRIC
 WHOLE NUMBERS INDICATE MILLIMETRES
 DECIMALIZED NUMBERS INDICATE METRES

B.M. ELEV.	FIELD BOOK #	CITY OF WINNIPEG WATER AND WASTE ENGINEERING DIVISION	
POSTED TO LIS		DESIGNED BY: SC	CHECKED BY: SC
		DRAWN BY: CJH	APPROVED BY: KZ
		HOR. SCALE: 1:500	RELEASED FOR CONSTRUCTION: KAS ZUREK
		VERTICAL	
NO.	REVISIONS	DATE	DATE
		2010 07 06	2010 07 06

THE CITY OF WINNIPEG
 WATER AND WASTE DEPARTMENT

2010 SEWER RENEWALS
 BY CIPP LININGS, CONTRACT 12
ALMOND BAY (S LEG)
 MH AT ALMOND BAY (E LEG) TO
 MH AT DRAKE BOULEVARD

SHEET 5 OF 53
 CITY DRAWING NUMBER
9304