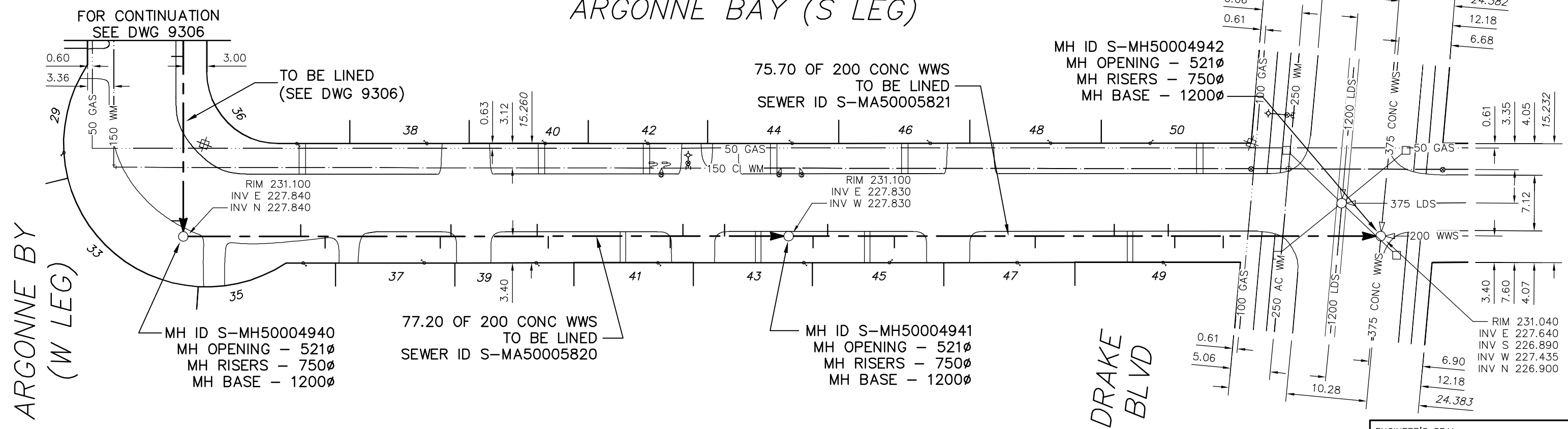


77.20 PARTIALLY DETERIORATED
OVALITY = 3.0%

75.70 PARTIALLY DETERIORATED
OVALITY = 3.0%



ARGONNE BAY (S LEG)



SEWER JUNCTION INFORMATION FROM SEWER VIDEO INSPECTION
SEWER ID S-MA50005820

DISTANCE FROM MH ID S-MH50004930				
15.0	E	150Ø	NORTH	JN
18.1	E	150Ø	SOUTH	CN
32.8	E	150Ø	SOUTH	CN
34.2	E	150Ø	NORTH	CN
45.2	E	150Ø	NORTH	JN
46.6	E	150Ø	SOUTH	CNI
62.2	E	150Ø	SOUTH	CNI
63.8	E	150Ø	NORTH	JN
69.1	E	150Ø	NORTH	CNI

SEWER JUNCTION INFORMATION FROM SEWER VIDEO INSPECTION
SEWER ID S-MA50005821

DISTANCE FROM MH ID S-MH50004941				
3.1	E	150Ø	SOUTH	CNI
5.0	E	150Ø	NORTH	CN
13.5	E	150Ø	SOUTH	CNI
31.5	E	150Ø	SOUTH	JN
41.6	E	150Ø	NORTH	JN
48.5	E	150Ø	NORTH	CNI
49.3	E	150Ø	SOUTH	CNI
55.5	E	150Ø	SOUTH	JN

ENGINEER'S SEAL

ORIGINAL SIGNED BY
S.R.J. COURNOYER
10/07/06

BID OPPORTUNITY: 525-2010
FILENAME : 9308.dwg
PLOT DATE : 2010 07 07

LEGEND:
52.0 | MEASUREMENT TO REPAIR FROM REFERENCE MH SHOWN THUS... 0.0

METRIC
WHOLE NUMBERS INDICATE MILLIMETRES
DECIMALIZED NUMBERS INDICATE METRES

B.M. ELEV.	FIELD BOOK #	CITY OF WINNIPEG WATER AND WASTE ENGINEERING DIVISION		THE CITY OF WINNIPEG WATER AND WASTE DEPARTMENT	
POSTED TO LIS		DESIGNED BY: SC	CHECKED BY: SC	2010 SEWER RENEWALS BY CIPP LININGS, CONTRACT 12 ARGONNE BAY (S LEG) MH AT ARGONNE BAY (W LEG) TO MH AT DRAKE BOULEVARD	
		DRAWN BY: CJH	APPROVED BY: KZ	SHEET 9 OF 53 CITY DRAWING NUMBER 9308	
		HOR. SCALE 1:500 VERTICAL	RELEASED FOR CONSTRUCTION KAS ZUREK		
NO.	REVISIONS	DATE	BY	DATE	2010 07 06