

58.00 PARTIALLY DETERIORATED
 OVALITY = 3.0%

17.70 FULLY DETERIORATED
 OVALITY = 10.0%



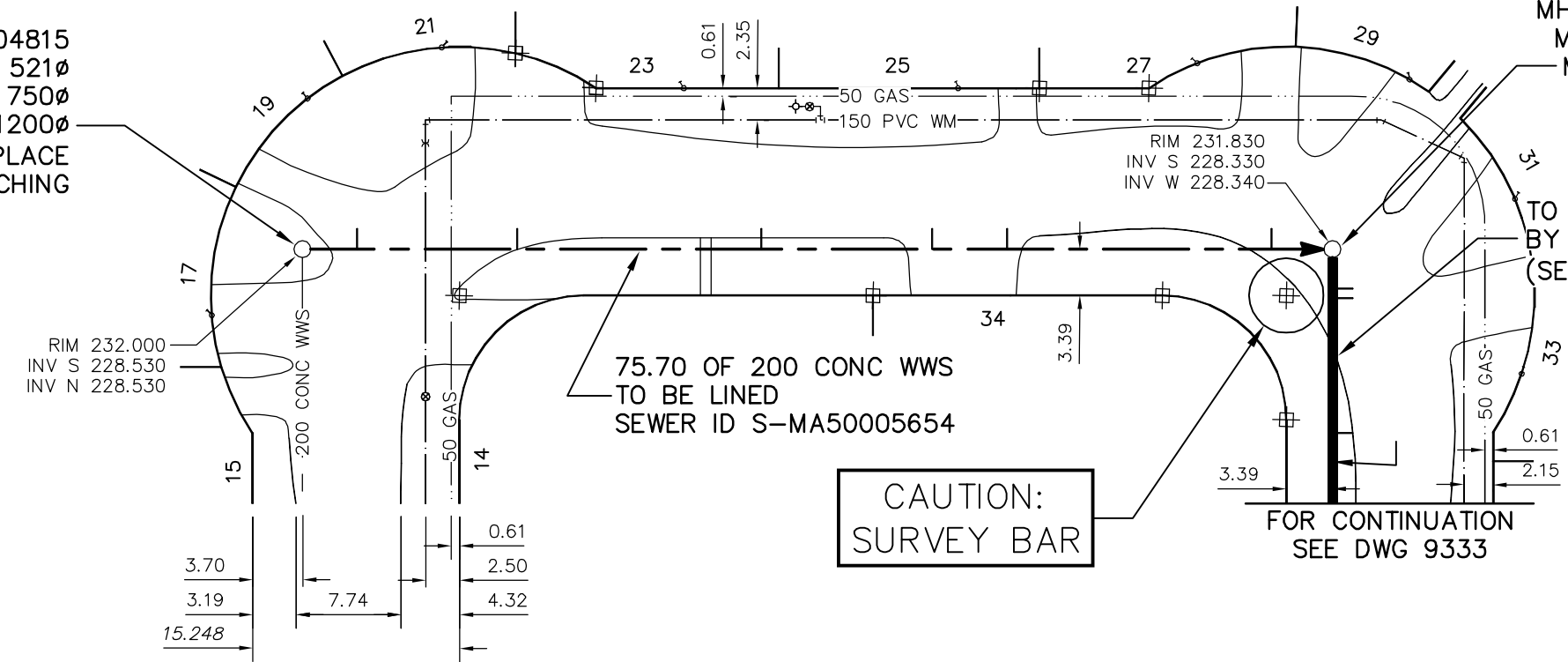
CYPRESS BAY (N LEG)

MH ID S-MH50004815
 MH OPENING - 521Ø
 MH RISERS - 750Ø
 MH BASE - 1200Ø
 REPAIR/REPLACE
 MH BENCHING

MH ID S-MH50005350
 MH OPENING - 521Ø
 MH RISERS - 750Ø
 MH BASE - 1200Ø

CYPRESS BY (W LEG)

CYPRESS BY (E LEG)



SEWER JUNCTION INFORMATION
 FROM SEWER VIDEO INSPECTION
 SEWER ID S-MA50005654

DISTANCE FROM MH ID S-MH50004815				
4.0	E	150Ø	NORTH	JN
15.8	E	150Ø	NORTH	JN
33.8	E	150Ø	NORTH	JN
46.4	E	150Ø	NORTH	JN
51.9	E	150Ø	NORTH	JN
71.4	E	150Ø	NORTH	JN

ENGINEER'S SEAL

ORIGINAL SIGNED
 BY
 S.R.J.
 COURNOYER
 10/07/06

BID OPPORTUNITY: 525-2010
 FILENAME : 9332.dwg
 PLOT DATE : 2010 07 07

LEGEND:
 52.0 | MEASUREMENT TO REPAIR FROM REFERENCE MH SHOWN THUS...
 0.0 |

METRIC
 WHOLE NUMBERS INDICATE MILLIMETRES
 DECIMALIZED NUMBERS INDICATE METRES

B.M. ELEV.	FIELD BOOK #:	CITY OF WINNIPEG WATER AND WASTE ENGINEERING DIVISION		THE CITY OF WINNIPEG WATER AND WASTE DEPARTMENT	
POSTED TO LIS		DESIGNED BY: SC	CHECKED BY: SC	2010 SEWER RENEWALS BY CIPP LININGS, CONTRACT 12 CYPRESS BAY (N LEG)	
		DRAWN BY: CJH	APPROVED BY: KZ	MH AT CYPRESS BAY (W LEG) TO MH AT CYPRESS BAY (E LEG)	
		HOR. SCALE 1:500	RELEASED FOR CONSTRUCTION KAS ZUREK	SHEET 33 OF 53	
		VERTICAL		CITY DRAWING NUMBER	
NO.	REVISIONS	DATE	BY	DATE	2010 07 06
				DATE	2010 07 06
					9332