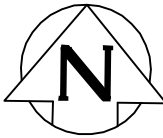


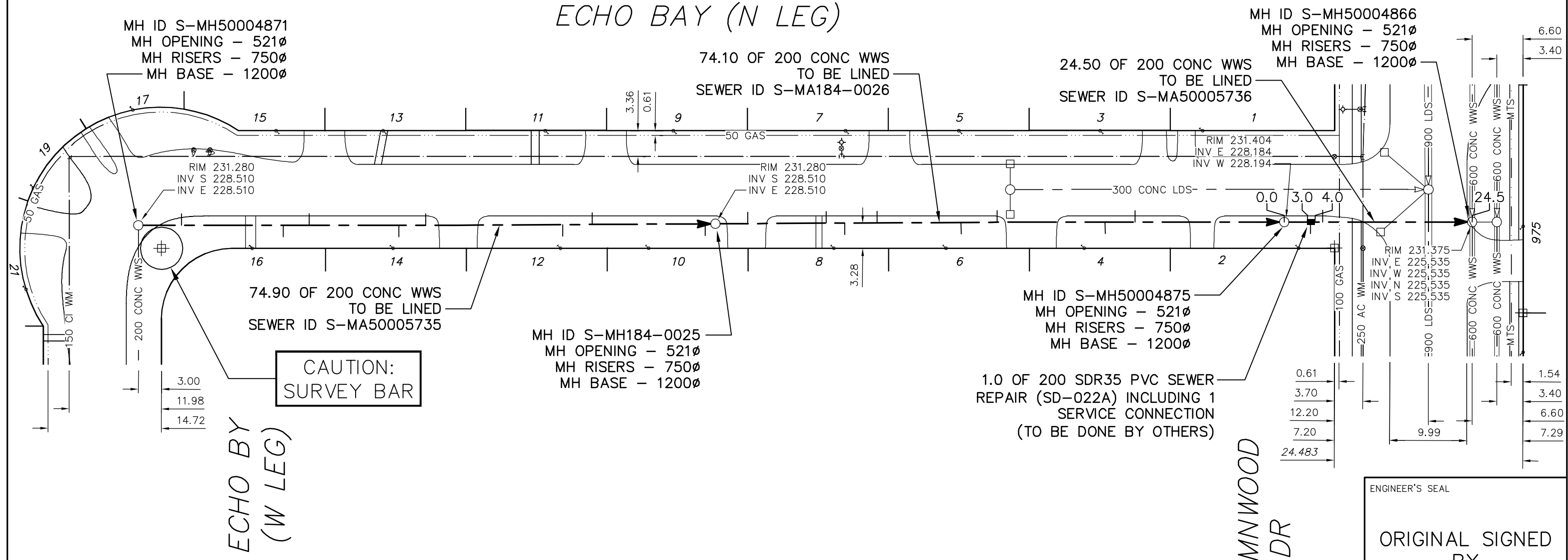
74.90 PARTIALLY DETERIORATED  
OVALITY = 3.0%

74.10 PARTIALLY DETERIORATED  
OVALITY = 3.0%

21.500 FULLY DETERIORATED  
OVALITY = 3.0%



# ECHO BAY (N LEG)



SEWER JUNCTION INFORMATION FROM SEWER VIDEO INSPECTION  
SEWER ID S-MA50005735

DISTANCE FROM MH ID S-MH50004871				
5.6	E	150ø	NORTH	JN
18.8	E	150ø	SOUTH	JN
22.2	E	150ø	NORTH	JN
33.8	E	150ø	SOUTH	JN
37.3	E	150ø	NORTH	JN
55.1	E	150ø	SOUTH	JN
58.9	E	150ø	NORTH	JN
73.6	E	150ø	SOUTH	JN

SEWER JUNCTION INFORMATION FROM SEWER VIDEO INSPECTION  
SEWER ID S-MA184-0026

DISTANCE FROM MH ID S-MH184-0025				
4.2	E	150ø	NORTH	JN
14.4	E	150ø	NORTH	JN
16.8	E	150ø	SOUTH	JN
21.0	E	150ø	NORTH	JN
31.9	E	150ø	SOUTH	JN
36.6	E	150ø	NORTH	JN
50.6	E	150ø	SOUTH	JN
54.5	E	150ø	NORTH	JN

SEWER JUNCTION INFORMATION FROM SEWER VIDEO INSPECTION  
SEWER ID S-MA50005636

DISTANCE FROM MH ID S-MH50004875				
3.4	E	150ø	SOUTH	JX
5.0	E	150ø	NORTH	CX

ENGINEER'S SEAL

ORIGINAL SIGNED BY  
S.R.J. COURNOYER  
10/07/06

BID OPPORTUNITY: 525-2010  
FILENAME : 9334.dwg  
PLOT DATE : 2010 07 07

LEGEND:  
52.0 | MEASUREMENT TO REPAIR FROM REFERENCE MH SHOWN THUS... 0.0

**METRIC**  
WHOLE NUMBERS INDICATE MILLIMETRES  
DECIMALIZED NUMBERS INDICATE METRES

B.M. ELEV.	FIELD BOOK #:	<b>CITY OF WINNIPEG WATER AND WASTE ENGINEERING DIVISION</b>	
POSTED TO LIS		DESIGNED BY: SC	CHECKED BY: SC
		DRAWN BY: CJH	APPROVED BY: KZ
		HOR. SCALE: 1:500	RELEASED FOR CONSTRUCTION: KAS ZUREK
		VERTICAL	DATE: 2010 07 06
NO.	REVISIONS	DATE	BY

**THE CITY OF WINNIPEG WATER AND WASTE DEPARTMENT**

2010 SEWER RENEWALS  
BY CIPP LININGS, CONTRACT 12  
**ECHO BAY (N LEG)**  
MH AT ECHO BAY (W LEG) TO  
MH AT AUTUMNWOOD DRIVE

SHEET 35 OF 53  
CITY DRAWING NUMBER  
9334