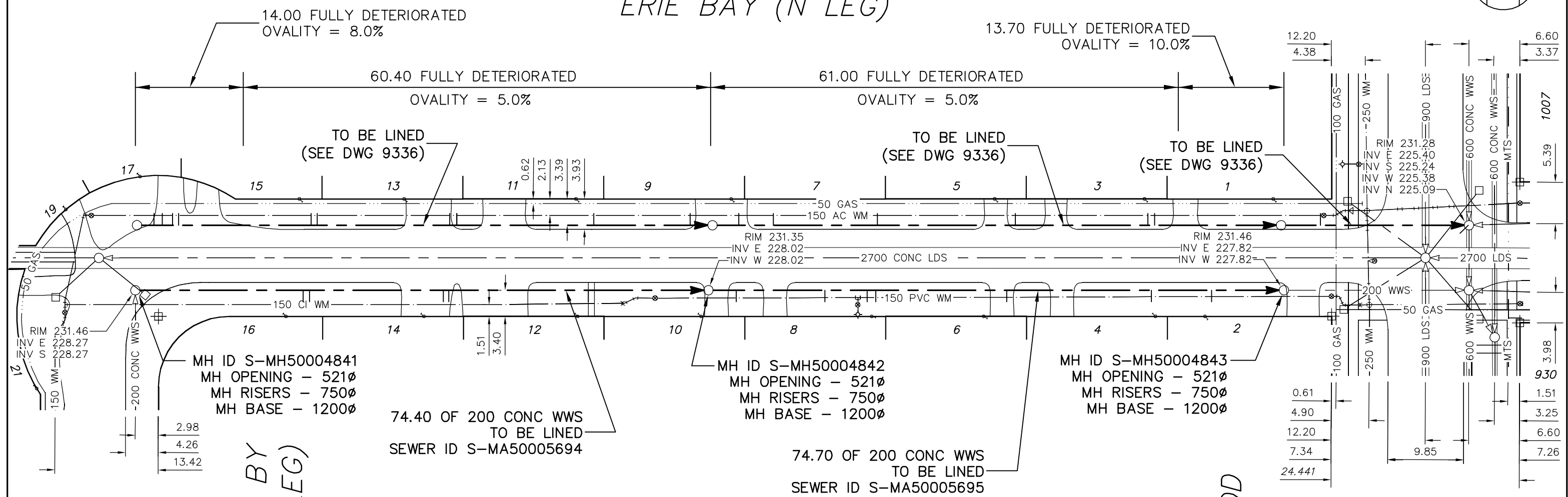


ERIE BAY (N LEG)



ERIE BY
(W LEG)

AUTUMNWOOD
DR

ENGINEER'S SEAL

ORIGINAL SIGNED
BY
S.R.J.
COURNOYER
10/07/06

BID OPPORTUNITY: 525-2010
FILENAME : 9337.dwg
PLOT DATE : 2010 07 07

SEWER JUNCTION INFORMATION
FROM SEWER VIDEO INSPECTION
SEWER ID S-MA50005694

DISTANCE FROM MH ID S-MH50004841				
21.80	E	150Ø	SOUTH	CXI
22.60	E	150Ø	SOUTH	JN
40.00	E	150Ø	SOUTH	CXI
40.70	E	150Ø	SOUTH	JN
58.80	E	150Ø	SOUTH	JN

SEWER JUNCTION INFORMATION
FROM SEWER VIDEO INSPECTION
SEWER ID S-MA50005695

DISTANCE FROM MH ID S-MH50004842				
3.60	E	150Ø	SOUTH	JN
15.10	E	150Ø	SOUTH	JN
20.60	E	150Ø	SOUTH	JN
21.70	E	150Ø	SOUTH	CX
38.70	E	150Ø	SOUTH	JN
57.50	E	150Ø	SOUTH	JX
65.30	E	150Ø	SOUTH	CXI

LEGEND:
52.0 | MEASUREMENT TO REPAIR FROM REFERENCE MH SHOWN THUS... 0.0

METRIC
WHOLE NUMBERS INDICATE MILLIMETRES
DECIMALIZED NUMBERS INDICATE METRES

B.M. ELEV.	FIELD BOOK #	CITY OF WINNIPEG WATER AND WASTE ENGINEERING DIVISION		THE CITY OF WINNIPEG WATER AND WASTE DEPARTMENT	
POSTED TO LBIS		DESIGNED BY: SC	CHECKED BY: SC	2010 SEWER RENEWALS BY CIPP LININGS, CONTRACT 12	
		DRAWN BY: CJH	APPROVED BY: KZ	ERIE BAY (N LEG)	
		HOR. SCALE: 1:500	RELEASED FOR CONSTRUCTION: KAS ZUREK	ERIE BAY (W LEG) TO AUTUMNWOOD DRIVE - (SOUTH SEWER)	
		VERTICAL	DATE: 2010 07 06	SHEET 38 OF 53 CITY DRAWING NUMBER 9337	
NO.	REVISIONS	DATE	BY		