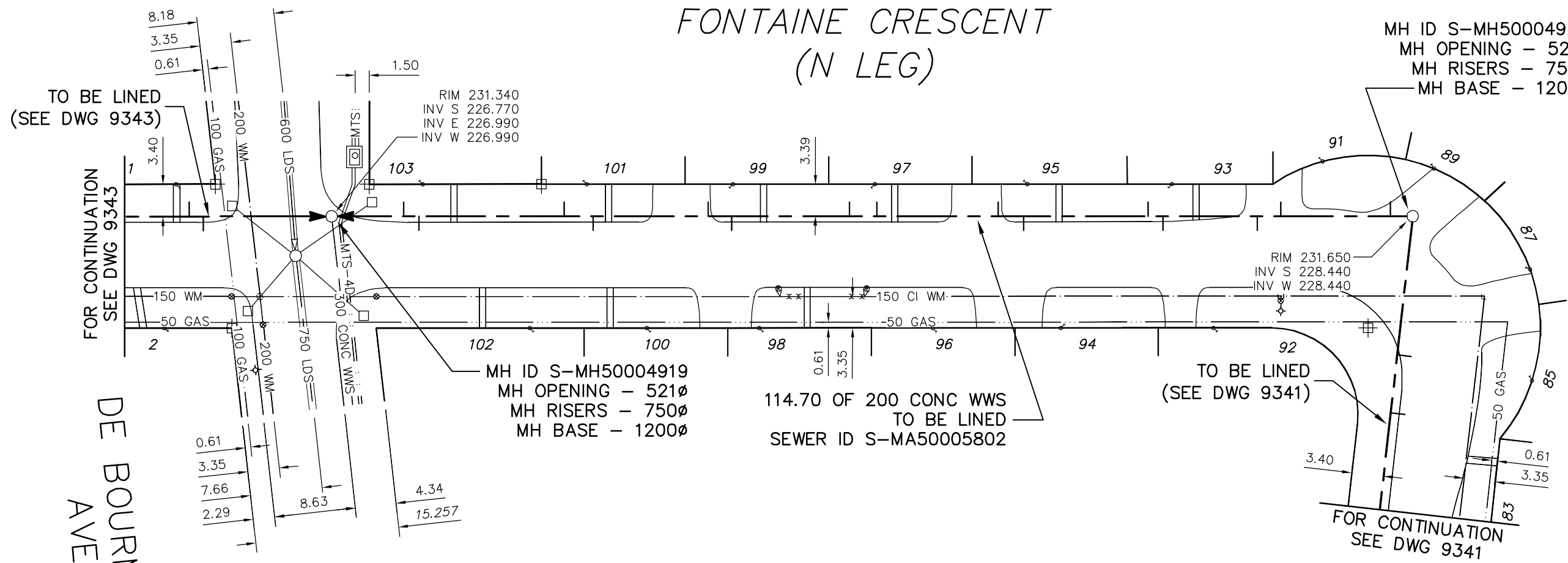


114.70 FULLY DETERIORATED
OVALITY = 5.0%



FONTAINE CRESCENT (N LEG)

MH ID S-MH50004924
MH OPENING - 521Ø
MH RISERS - 750Ø
MH BASE - 1200Ø



MH ID S-MH50004919
MH OPENING - 521Ø
MH RISERS - 750Ø
MH BASE - 1200Ø

114.70 OF 200 CONC WWS
TO BE LINED
SEWER ID S-MA50005802

TO BE LINED
(SEE DWG 9341)

FONTAINE CR
(E LEG)

FOR CONTINUATION
SEE DWG 9341

TO BE LINED
(SEE DWG 9343)

FOR CONTINUATION
SEE DWG 9343

DE BOURMONT
AVE

SEWER JUNCTION INFORMATION
FROM SEWER VIDEO INSPECTION
SEWER ID S-MA50005802

DISTANCE FROM MH ID S-MH50004924				
2.4	W	150Ø	NORTH	CN
14.0	W	150Ø	NORTH	JN
16.5	W	150Ø	SOUTH	JN
26.5	W	150Ø	SOUTH	JN
28.1	W	150Ø	NORTH	JN
41.3	W	150Ø	SOUTH	JN
44.0	W	150Ø	NORTH	JN
56.9	W	150Ø	NORTH	JN
59.8	W	150Ø	NORTH	JN
72.3	W	150Ø	SOUTH	JN
74.8	W	150Ø	NORTH	JN
87.0	W	150Ø	SOUTH	JN
90.1	W	150Ø	NORTH	JN
105.5	W	150Ø	SOUTH	JN
107.1	W	150Ø	NORTH	JN

ENGINEER'S SEAL

ORIGINAL SIGNED
BY
S.R.J.
COURNOYER
10/07/06

BID OPPORTUNITY: 525-2010
FILENAME : 9342.dwg
PLOT DATE : 2010 07 07

LEGEND:

52.0 | MEASUREMENT TO REPAIR FROM REFERENCE MH SHOWN THUS...

METRIC

WHOLE NUMBERS INDICATE MILLIMETRES
DECIMALIZED NUMBERS INDICATE METRES

B.M. ELEV.	FIELD BOOK #	CITY OF WINNIPEG WATER AND WASTE ENGINEERING DIVISION		THE CITY OF WINNIPEG WATER AND WASTE DEPARTMENT	
POSTED TO LIS		DESIGNED BY: SC	CHECKED BY: SC	2010 SEWER RENEWALS BY CIPP LININGS, CONTRACT 12	
		DRAWN BY: CJH	APPROVED BY: KZ	FONTAINE CRESCENT (N LEG)	
		HOR. SCALE: 1:500	RELEASED FOR CONSTRUCTION: KAS ZUREK	MH AT FONTAINE CRESCENT (E LEG) TO MH AT DE BOURMONT AVENUE	
NO.	REVISIONS	DATE	BY	DATE	2010 07 06
				DATE	2010 07 06
				SHEET	43 OF 53
				CITY DRAWING NUMBER	9342