

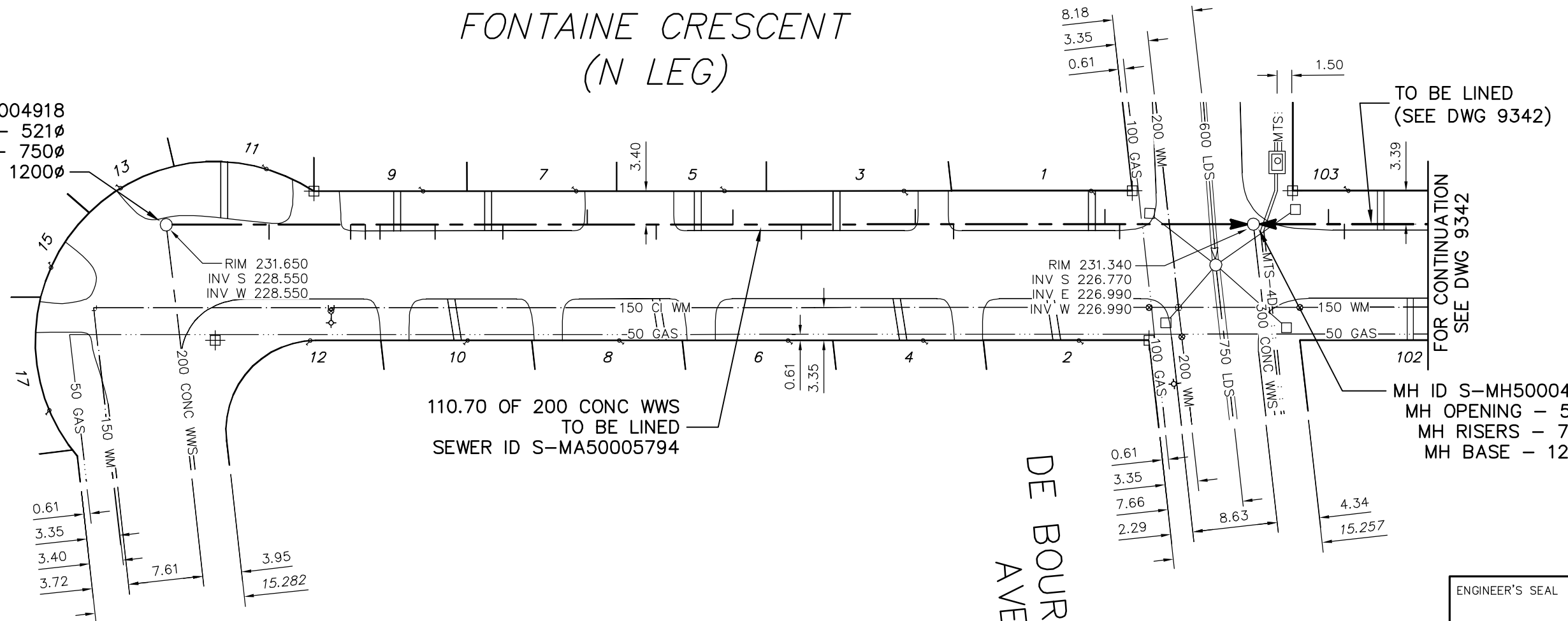
110.70 FULLY DETERIORATED
OVALITY = 5.0%



FONTAINE CRESCENT (N LEG)

MH ID S-MH50004918
MH OPENING - 521Ø
MH RISERS - 750Ø
MH BASE - 1200Ø

FONTAINE CR
(W LEG)



110.70 OF 200 CONC WWS
TO BE LINED
SEWER ID S-MA50005794

MH ID S-MH50004919
MH OPENING - 521Ø
MH RISERS - 750Ø
MH BASE - 1200Ø

SEWER JUNCTION INFORMATION
FROM SEWER VIDEO INSPECTION
SEWER ID S-MA50005794

DISTANCE FROM MH ID S-MH50004918				
10.5	E	150Ø	SOUTH	CNI
18.8	E	150Ø	SOUTH	JN
20.3	E	150Ø	SOUTH	JN
21.8	E	150Ø	SOUTH	JN
27.4	E	150Ø	SOUTH	JN
34.3	E	150Ø	SOUTH	JN
42.9	E	150Ø	NORTH	JN
49.9	E	150Ø	SOUTH	JN
57.7	E	150Ø	NORTH	JN
64.7	E	150Ø	SOUTH	JN
76.3	E	150Ø	NORTH	JN
80.2	E	150Ø	SOUTH	JN
95.6	E	150Ø	NORTH	JN
97.1	E	150Ø	SOUTH	JN

LEGEND:

52.0 | MEASUREMENT TO REPAIR FROM REFERENCE MH SHOWN THUS...

METRIC

WHOLE NUMBERS INDICATE MILLIMETRES
DECIMALIZED NUMBERS INDICATE METRES

ENGINEER'S SEAL

ORIGINAL SIGNED
BY
S.R.J.
COURNOYER
10/07/06

BID OPPORTUNITY: 525-2010
FILENAME : 9343.dwg
PLOT DATE : 2010 07 07

B.M. ELEV.	FIELD BOOK #:	CITY OF WINNIPEG WATER AND WASTE ENGINEERING DIVISION		THE CITY OF WINNIPEG WATER AND WASTE DEPARTMENT	
POSTED TO LIS		DESIGNED BY: SC	CHECKED BY: SC	2010 SEWER RENEWALS BY CIPP LININGS, CONTRACT 12	
		DRAWN BY: CJH	APPROVED BY: KZ	FONTAINE CRESCENT (N LEG)	
		HOR. SCALE: 1:500	RELEASED FOR CONSTRUCTION: KAS ZUREK	MH AT FONTAINE CRESCENT (W LEG) TO MH AT DE BOURMONT AVENUE	
		VERTICAL	DATE: 2010 07 06	SHEET 44 OF 53	
NO.	REVISIONS	DATE	BY	CITY DRAWING NUMBER 9343	