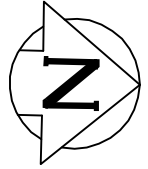


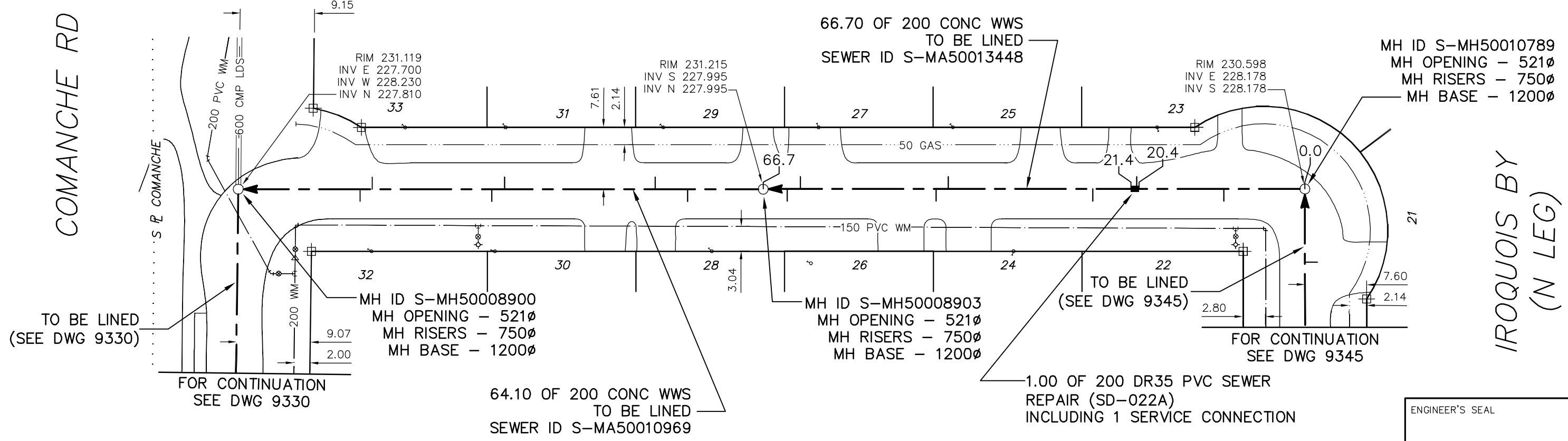
20.00 FULLY DETERIORATED  
OVALITY = 3.0%

46.70 PARTIALLY DETERIORATED  
OVALITY = 3.0%

64.10 PARTIALLY DETERIORATED  
OVALITY = 3.0%



# IROQUOIS BAY (W LEG)



MH ID S-MH50010789  
MH OPENING - 521Ø  
MH RISERS - 750Ø  
MH BASE - 1200Ø

MH ID S-MH50008900  
MH OPENING - 521Ø  
MH RISERS - 750Ø  
MH BASE - 1200Ø

MH ID S-MH50008903  
MH OPENING - 521Ø  
MH RISERS - 750Ø  
MH BASE - 1200Ø

64.10 OF 200 CONC WWS  
TO BE LINED  
SEWER ID S-MA50010969

1.00 OF 200 DR35 PVC SEWER  
REPAIR (SD-022A)  
INCLUDING 1 SERVICE CONNECTION

ENGINEER'S SEAL

ORIGINAL SIGNED  
BY  
S.R.J.  
COURNOYER  
10/07/06

BID OPPORTUNITY: 525-2010  
FILENAME : 9346.dwg  
PLOT DATE : 2010 07 07

SEWER JUNCTION INFORMATION FROM SEWER VIDEO INSPECTION  
SEWER ID S-MA50010969

DISTANCE FROM MH ID S-MH50008903				
9.3	S	100Ø	EAST	CNI
13.3	S	100Ø	WEST	JN
31.8	S	100Ø	WEST	JN
33.4	S	100Ø	EAST	JN
48.1	S	100Ø	WEST	JN
49.6	S	100Ø	EAST	JN

SEWER JUNCTION INFORMATION FROM SEWER VIDEO INSPECTION  
SEWER ID S-MA50013448

DISTANCE FROM MH ID S-MH50010789				
10.0	S	100Ø	EAST	CNI
20.7	S	100Ø	WEST	CN
26.1	S	100Ø	EAST	JN
43.9	S	100Ø	WEST	JN
45.4	S	100Ø	EAST	JN
62.1	S	100Ø	WEST	JN
63.7	S	100Ø	EAST	JN

LEGEND:  
52.0 | MEASUREMENT TO REPAIR FROM REFERENCE MH SHOWN THUS...

**METRIC**  
WHOLE NUMBERS INDICATE MILLIMETRES  
DECIMALIZED NUMBERS INDICATE METRES

B.M. ELEV.	FIELD BOOK #	<b>CITY OF WINNIPEG WATER AND WASTE ENGINEERING DIVISION</b>		<b>THE CITY OF WINNIPEG WATER AND WASTE DEPARTMENT</b>	
POSTED TO LIS		DESIGNED BY: SC	CHECKED BY: SC	2010 SEWER RENEWALS BY CIPP LININGS, CONTRACT 12 IROQUOIS BAY (W LEG) MH AT IROQUOIS BAY (N LEG) TO MH AT COMANCHE ROAD	
		DRAWN BY: CJH	APPROVED BY: KZ	SHEET 47 OF 53 CITY DRAWING NUMBER 9346	
		HOR. SCALE 1:500 VERTICAL	RELEASED FOR CONSTRUCTION KAS ZUREK		
NO.	REVISIONS	DATE	BY	DATE	2010 07 06