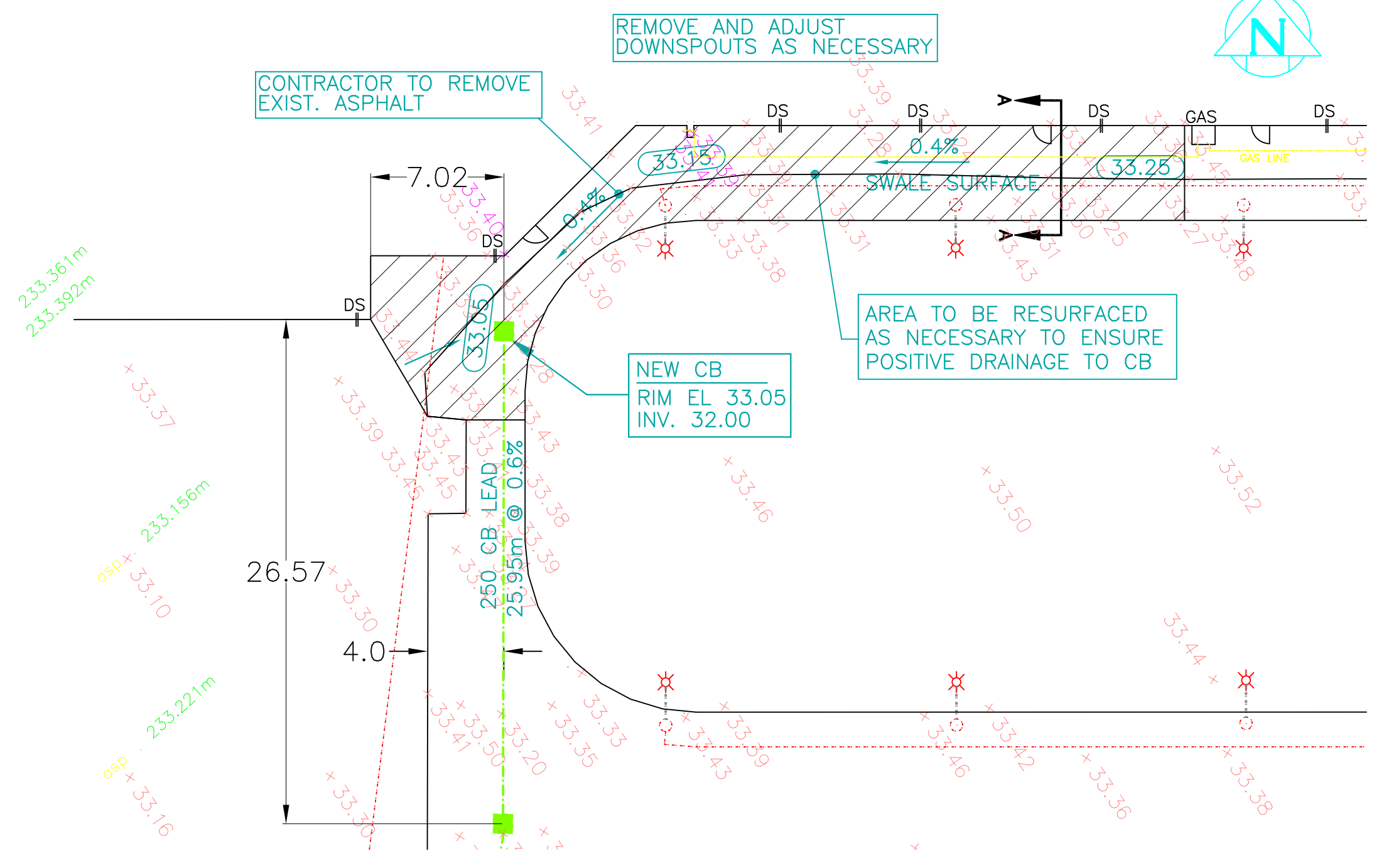
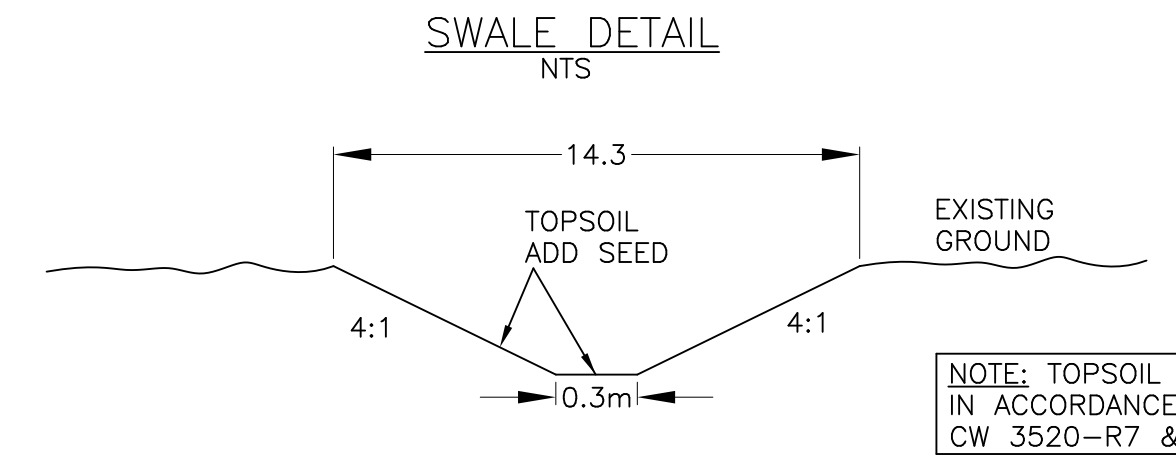
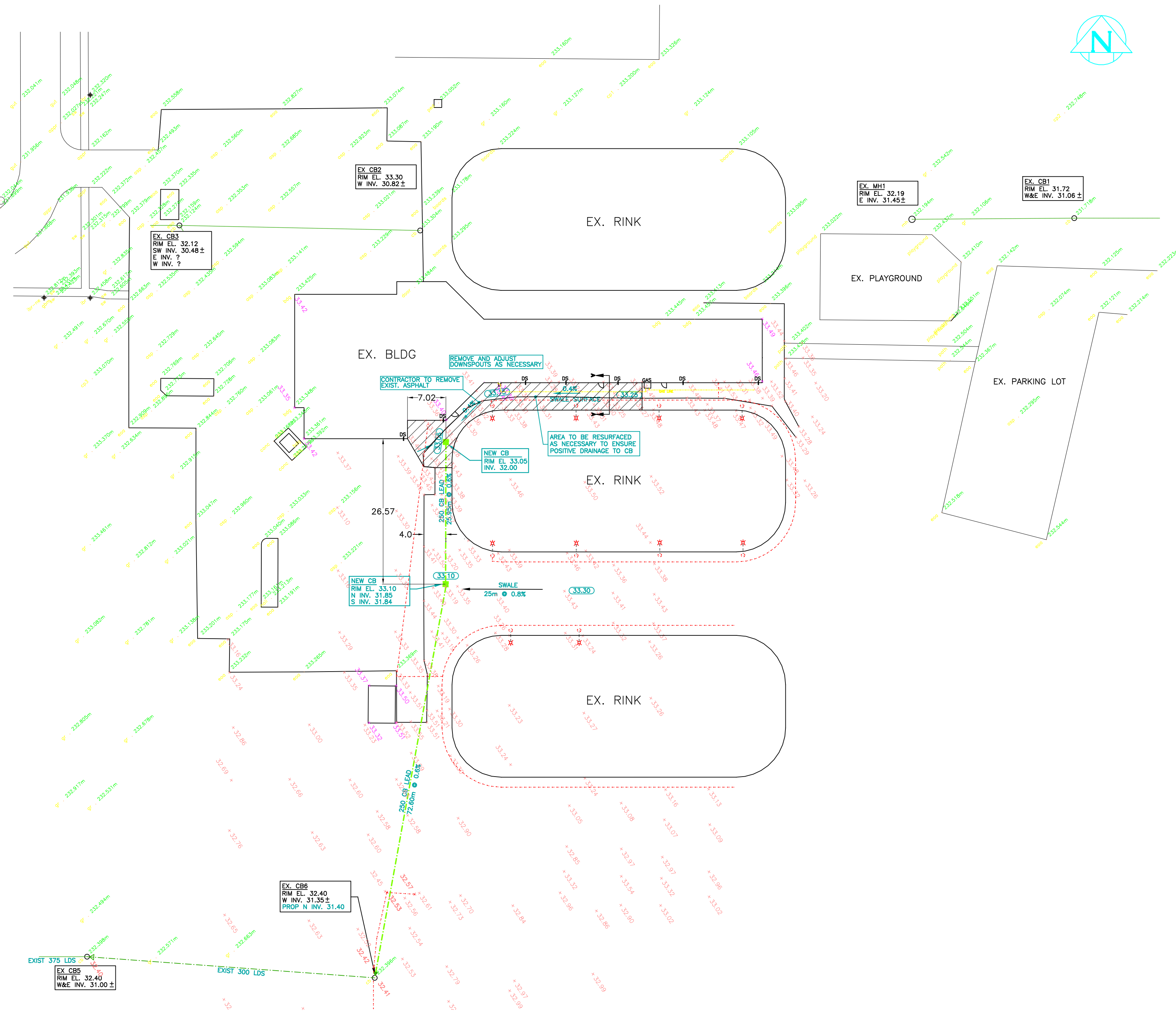
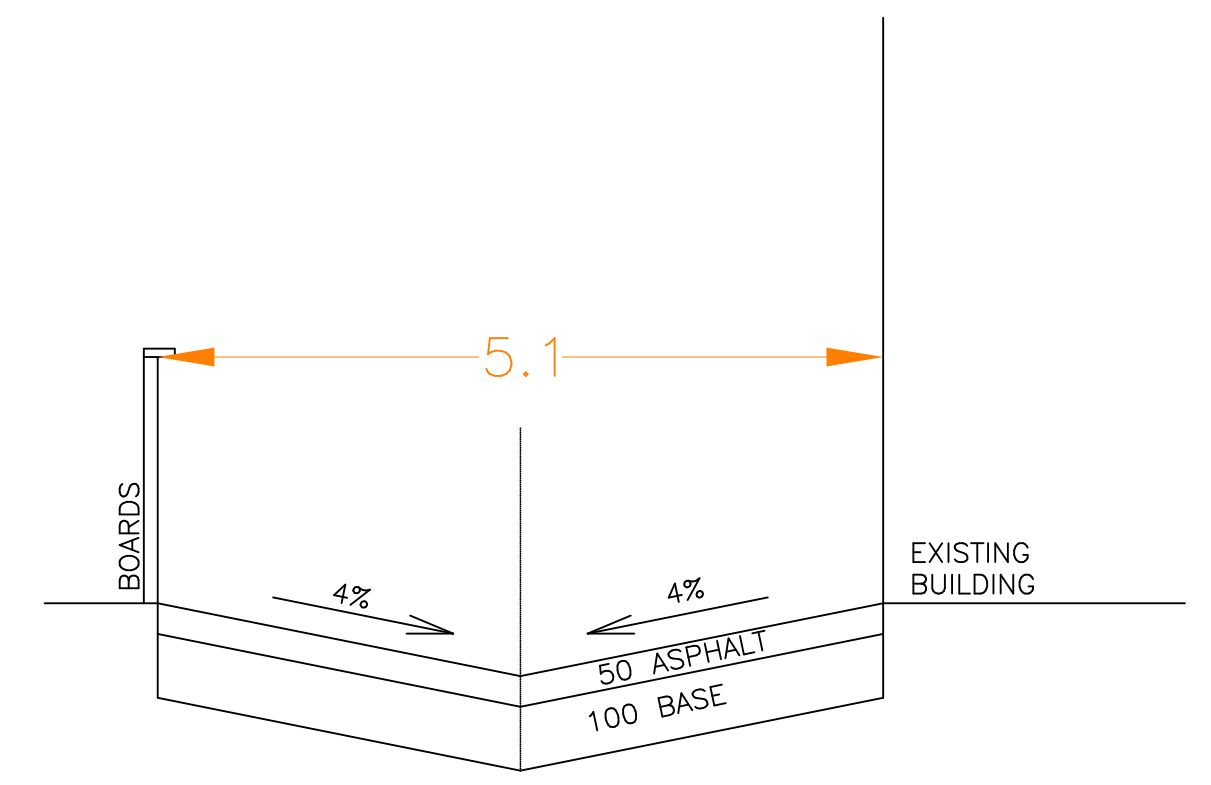


SANFORD FLEMING RD.



ASPHALT DETAIL SCALE 1:250



CROSS SECTION "A" NTS

- NOTE:
- 1) ALL DISTANCES AND ELEVATIONS ARE IN METRIC. ADD 200.00 FOR GEODETIC ELEVATION.
  - 2) ALL CONSTRUCTION TO BE IN ACCORDANCE WITH THE CITY OF WINNIPEG STANDARD CONSTRUCTION SPECIFICATION, LATEST EDITION.
  - 3) CONTRACTOR TO OBTAIN AND PAY FOR ALL PERMITS.
  - 4) WHERE CONNECTING TO EXISTING SERVICES, CONTRACTOR TO CONFIRM LOCATION AND ELEVATION PRIOR TO CONSTRUCTION.
  - 5) ALL DIMENSIONS TO BE VERIFIED IN THE FIELD.
  - 6) ALL CONSTRUCTION SAFETY SHALL CONFORM TO APPLICABLE PROVINCIAL AND CITY BY-LAWS.

87R03 - S. side Sanford Fleming Rd., E. of Meadow Gate Rd., Tbit. On top of 0.05 m sq. X 2.4 m iron tube, 3 m N. of N. wall & 11.4 m E. of E. wall No. 168 Meadow Gate Dr. or 6.6 m W. of E.L. Sanford Fleming Rd. & on S.L. of Sanford Fleming Rd.

EXISTING	LEGEND	PROPOSED	EXISTING	LEGEND	PROPOSED
---	HYDRO	---	---	SHAW PEDESTAL	---
---	M.T.S.	---	---	HYDRO TRANSFORMER	---
---	GAS	---	---	JOINT USE PEDESTAL	---
---	WASTE WATER SEWER	---	---	PROPERTY LINE	---
---	WATERMAIN	---	---	JUNCTIONS	---
---	LAND DRAINAGE SEWER	---	---	CONCRETE	---
---	SHAW CABLE	---	---	ASPHALT	---
---	MANHOLE	---	---	SIDEWALK	---
---	HYDRANT	---	---	DITCH	---
---	GATE VALVE	---	---	ELECTRIC LINE	---
---	SURVEY BAR	---	---		
---	CATCH BASIN	---	---		
---	ELEVATION	---	---		
---	CULVERT	---	---		
---	GEODETIC MONUMENT	---	---		

LOCATION APPROVED UNDERGROUND STRUCTURES		DATE	
NO.	REVISIONS	DATE	BY
2	GENERAL REVISIONS	7/26/10	G.O.
1	REVISED LAYOUT	6/17/10	G.O.

B.M. ELEV. 232.415m FIELD BOOK #: 139

POSTED TO LBS

**LINDAL CONSULTING LTD.**

DESIGNED BY DJL CHECKED BY DJL

DRAWN BY G.O./D.C. APPROVED BY DJL

HOR. SCALE 1:500 RELEASED FOR CONSTRUCTION

VERTICAL 1:50

DATE MAY 2009

**APEGM**

Certificate of Authorization

Lindal Consulting Ltd.

No. 817 July 8, 2010

ENGINEER'S SEAL

ORIGINAL SEAL BY D.J. LINDAL 8/7/10

CONSULTANT DRAWING NO. 217-001-S1

**THE CITY OF WINNIPEG**

Winnipeg

PARK CITY WEST COMMUNITY CENTRE LAND DRAINAGE SYSTEM IMPROVEMENTS AND RELATED WORKS WINNIPEG, MB

CITY BID OPPORTUNITY # 530-2010

SHEET 1 OF 1