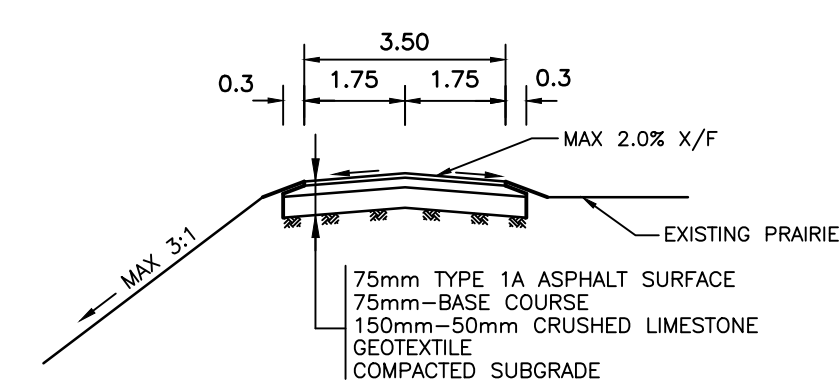
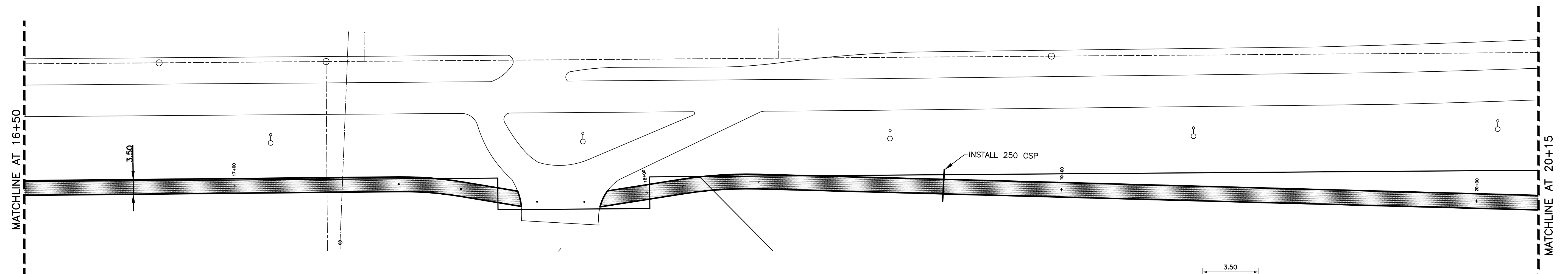
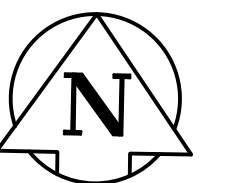


**NOTES:**

1. LOCATION OF PATHWAY, DITCHES, BOULEVARD, AND CULVERTS TO BE FINALIZED IN THE FIELD BY CONTRACT ADMINISTRATOR
2. CONTRACTOR TO TAKE PRECAUTIONARY STEPS TO AVOID DAMAGE FROM CONSTRUCTION ACTIVITIES TO TREES WITHIN THE LIMITS OF CONSTRUCTION
3. REGRADEING OF EXISTING DITCHES TO BE DIRECTED BY CONTRACT ADMINISTRATOR
4. RENEWAL OF EXISTING APPROACHES, PAVEMENT, CURBS, SIDEWALKS, CULVERTS, DITCHES AND BOULEVARD TO BE DIRECTED BY CONTRACT ADMINISTRATOR

**CHAINAGE ALONG  
CENTER OF PATH  
DUGALD ROAD**



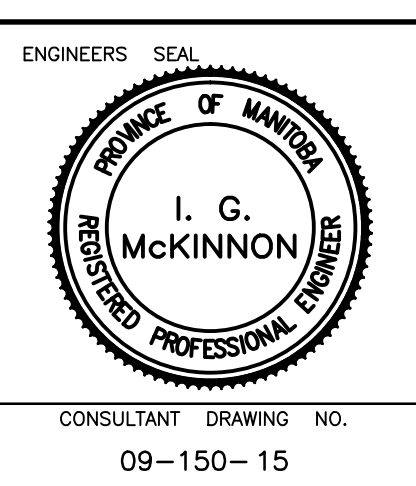
METRIC  
WHOLE NUMBERS INDICATE MILLIMETRES  
DECIMALIZED NUMBERS INDICATE METRES



	WATERMAIN			HYDRO			CENTER LINE	
	HYDRANT			M.T.S.			NORTH GUTTER LINE	
	VALVE			CONCRETE			SOUTH GUTTER LINE	
	LAND DRAINAGE SEWER			ASPHALT			WATERMAIN	
	WASTE WATER SEWER			PROPERTY LINE			VALVE	
	MANHOLE			SURVEY BAR			LAND DRAINAGE SEWER	
	CATCH BASIN			CURB STOP			WASTE WATER SEWER	
	CURB INLET			C.B. LEAD			JUNCTIONS	
	TRAFFIC SIGNAL			SIDEWALK RAMP			CULVERT	
	STEAM HT.			ELEVATIONS			ASPH./CONC. PAD	
	GAS			GARAGE PAD			GARAGE PAD	
	EXISTING			EXISTING			EXISTING	

LOCATION APPROVED		NO. REVISIONS		DATE	
SUPV. U/G STRUCTURES COMMITTEE DATE NOTE: LOCATION OF UNDERGROUND STRUCTURES AS SHOWN ARE BASED ON THE BEST INFORMATION AVAILABLE BUT NO GUARANTEE IS GIVEN THAT ALL EXISTING UTILITIES ARE SHOWN OR THAT THE GIVEN LOCATIONS ARE EXACT. CONFIRMATION OF EXISTENCE AND EXACT LOCATION OF ALL SERVICES MUST BE OBTAINED FROM THE INDIVIDUAL UTILITIES BEFORE PROCEEDING WITH CONSTRUCTION.		DATE		BY	

<b>GENIVAR</b> 10 PRAIRIE WAY WINNIPEG, MANITOBA R2J 3J8 PH: (204)-477-8650 FAX: (204)-474-2864	
DESIGNED BY: MBS	CHECKED BY: SM
DRAWN BY: MBS	APPROVED BY: IMcK
HOR. SCALE: 1:500	RELEASED FOR CONSTRUCTION
VERT. SCALE: 1:50	DATE: AUGUST 2010



Winnipeg THE CITY OF WINNIPEG PUBLIC WORKS DEPARTMENT

**2010 ACTIVE TRANSPORTATION  
INFRASTRUCTURE STIMULUS PROGRAM  
DUGALD MULTI-USE PATH**

FROM MATCHLINE AT STATION 16+50  
TO MATCHLINE AT STATION 20+15

CITY DRAWING NO. N/A	<b>TENDER NO. 544-2010</b>
SHEET 6 OF 8	

CITY DRAWING NO. N/A  
SHEET 6 OF 8  
TENDER NO. 544-2010