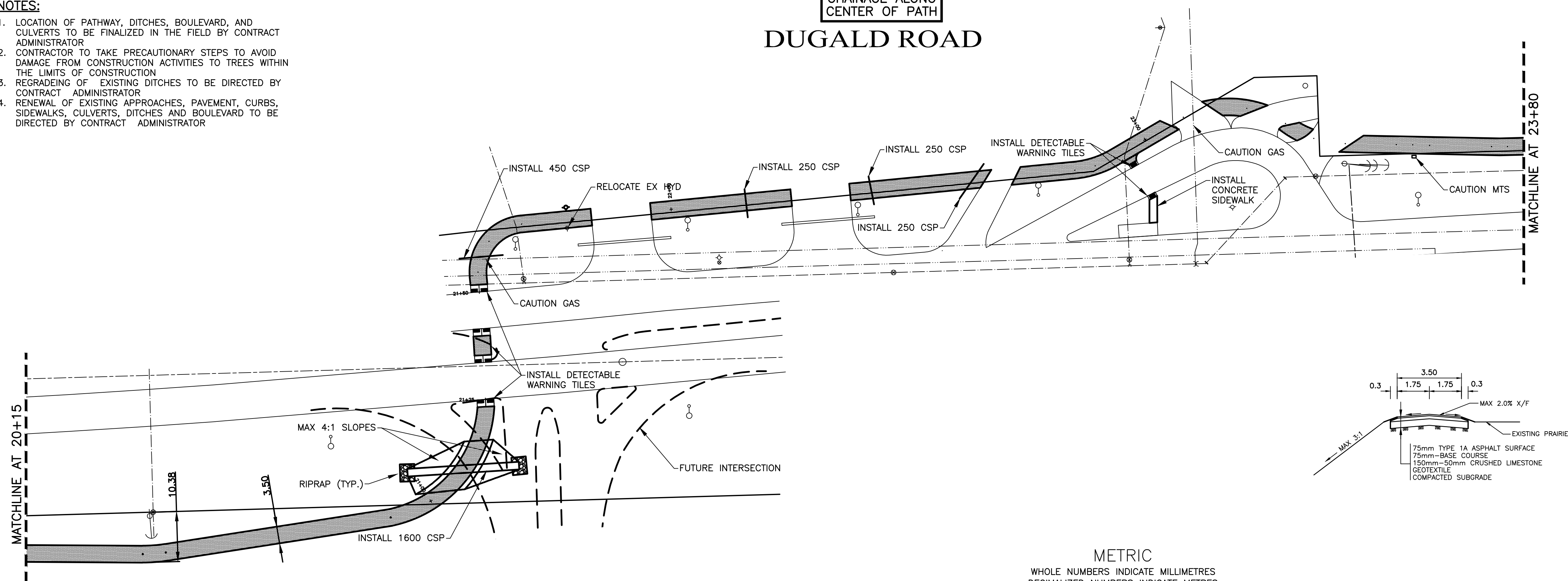
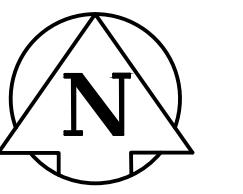


**NOTES:**

1. LOCATION OF PATHWAY, DITCHES, BOULEVARD, AND CULVERTS TO BE FINALIZED IN THE FIELD BY CONTRACT ADMINISTRATOR
2. CONTRACTOR TO TAKE PRECAUTIONARY STEPS TO AVOID DAMAGE FROM CONSTRUCTION ACTIVITIES TO TREES WITHIN THE LIMITS OF CONSTRUCTION
3. REGRADEING OF EXISTING DITCHES TO BE DIRECTED BY CONTRACT ADMINISTRATOR
4. RENEWAL OF EXISTING APPROACHES, PAVEMENT, CURBS, SIDEWALKS, CULVERTS, DITCHES AND BOULEVARD TO BE DIRECTED BY CONTRACT ADMINISTRATOR

**CHAINAGE ALONG CENTER OF PATH  
DUGALD ROAD**



METRIC  
WHOLE NUMBERS INDICATE MILLIMETRES  
DECIMALIZED NUMBERS INDICATE METRES

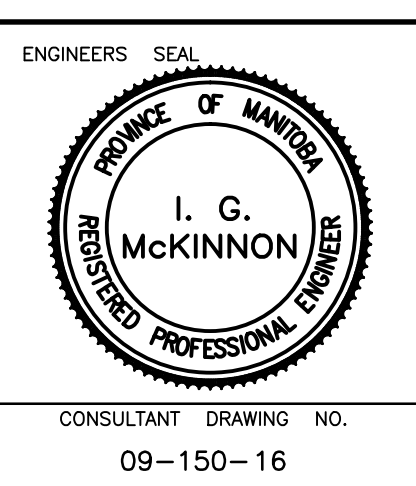


---	WATERMAIN	---	HYDRO	---	CENTER LINE	---	LOCATION APPROVED
⊕	HYDRANT	⊕	M.T.S.	---	NORTH GUTTER LINE	---	NO. REVISIONS
⊕	VALVE	⊕	CONCRETE	---	SOUTH GUTTER LINE	---	DATE
---	LAND DRAINAGE SEWER	---	ASPHALT	---	WATERMAIN	---	BY
---	WASTE WATER SEWER	---	PROPERTY LINE	---	VALVE	---	DATE
○	MANHOLE	⊕	SURVEY BAR	---	LAND DRAINAGE SEWER	---	DATE
□	CATCH BASIN	⊕	CURB STOP	---	WASTE WATER SEWER	---	DATE
△	CURB INLET	⊕	C.B. LEAD	---	JUNCTIONS	---	DATE
---	TRAFFIC SIGNAL	---	SIDEWALK RAMP	---	CULVERT	---	DATE
---	STEAM HT.	---	ELEVATIONS	---	ASPH./CONC. PAD	---	DATE
---	GAS	---		---	GARAGE PAD	---	DATE
---	EXISTING	---	LEGEND - PLAN	---	LEGEND - PROFILE	---	DATE
---	LEGEND - PLAN	---	PROPOSED	---	PROPOSED	---	DATE

DESIGNED BY	MBS	CHECKED BY	SM
DRAWN BY	MBS	APPROVED BY	IMcK
HOR. SCALE:	1:500	RELEASED FOR CONSTRUCTION	
VERT. SCALE:	1:50	DATE	AUGUST 2010

**GENIVAR**  
10 PRAIRIE WAY WINNIPEG, MANITOBA R2J 3J8  
PH: (204)-477-8650 FAX: (204)-474-2864

DESIGNED BY: MBS  
CHECKED BY: SM  
DRAWN BY: MBS  
APPROVED BY: IMcK  
HOR. SCALE: 1:500  
VERT. SCALE: 1:50  
DATE: AUGUST 2010



Winnipeg THE CITY OF WINNIPEG  
PUBLIC WORKS DEPARTMENT

2010 ACTIVE TRANSPORTATION  
INFRASTRUCTURE STIMULUS PROGRAM  
DUGALD MULTI-USE PATH  
FROM MATCHLINE AT STATION 20+15  
TO MATCHLINE AT STATION 23+80

CITY DRAWING NO. N/A  
SHEET 7 OF 8  
TENDER NO. 544-2010