

- NOTES:**
1. ALL WORK AND MATERIALS TO BE IN ACCORDANCE WITH THE LATEST REVISIONS OF THE CITY OF WINNIPEG STANDARD CONSTRUCTION SPECIFICATIONS.
 2. CONTRACTOR TO VERIFY DEPTH OF UTILITIES PRIOR TO CONSTRUCTION.
 3. LOCATION OF UNDERGROUND STRUCTURES AS SHOWN ARE BASED ON THE BEST INFORMATION AVAILABLE, BUT NO GUARANTEE IS GIVEN THAT ALL EXISTING UTILITIES ARE SHOWN OR THAT THE GIVEN LOCATIONS ARE EXACT. CONFIRMATION OF EXISTENCE AND EXACT LOCATION OF ALL SERVICES MUST BE OBTAINED FROM THE INDIVIDUAL UTILITIES BEFORE PROCEEDING WITH CONSTRUCTION.
 4. EXCAVATED MATERIAL TO BE USED AS BACKFILL WHERE REQUIRED.
 5. ALL SURFACES TO BE MAINTAINED OR RESTORED TO PREVIOUS CONDITION OR BETTER.
 6. REFER TO CITY OF WINNIPEG E-SPEC FOR INSTALLATION OF DETECTABLE WARNING SURFACE TILES (CONTACT BRUCE PETERS @ 986-5302 FOR FURTHER INFORMATION).



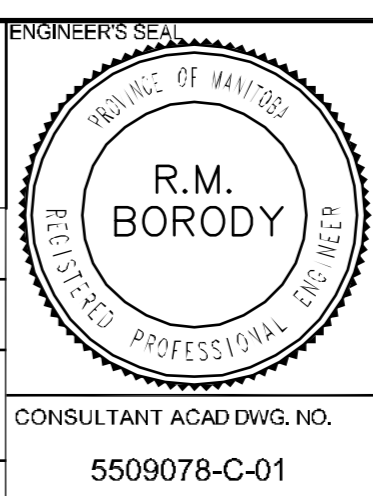
METRIC
WHOLE NUMBERS INDICATE MILLIMETERS
DECIMALIZED NUMBERS INDICATE METERS

ASPHALT PATHWAY	○	CMP CULVERT	□	EXISTING GROUND	---
PATHWAY CENTRELINE	○	MANHOLE	□	PROPOSED CENTERLINE	---
PROPERTY LINE	□	CATCH BASIN	□		
WALKWAY ELEVATION	(32.50)	HYDRO POLE	HP		
WATER VALVE	●	HYDRO POLE WITH LIGHT	HP		
SWALE	—				
MTS CABLE	—				
SEWER	—				
CONC. WWS	—				
WATER	—				
EXISTING DITCH FLOW	—				
EXISTING	LEGEND—PLAN	PROPOSED	EXISTING	LEGEND—PLAN	PROPOSED
EXISTING	LEGEND—PROFILE	PROPOSED	EXISTING	LEGEND—PROFILE	PROPOSED

LOCATIONS APPROVED	
UNDERGROUND STRUCTURES	SIGNED BY: _____ DATE: _____
SURF U/G STRUCTURES	SIGNED BY: _____ DATE: _____
LOCATION OF UNDERGROUND STRUCTURES AS SHOWN ARE BASED ON THE BEST INFORMATION AVAILABLE BUT NO GUARANTEE IS GIVEN THAT ALL EXISTING UTILITIES ARE SHOWN OR THAT THE GIVEN LOCATIONS ARE EXACT. CONFIRMATION OF EXISTENCE AND EXACT LOCATION OF ALL SERVICES MUST BE OBTAINED FROM THE INDIVIDUAL UTILITIES BEFORE PROCEEDING	

G.B.M. ELEV. 232.335	QTY OF WINNIPEG MAPPING AND SURVEYS CAP W CONCRETE FILE. 5/8 CORNER OF BISHOP GRANDIN BLVD AND WAVERLY AVE.
4	-
3	-
2	REVISED VERTICAL GEOMETRY 12.07.10 RMB
1	ISSUED FOR REVIEW 20.08.09 RMB
NO. REVISIONS	DATE BY

DESIGNED BY: CWS		CHECKED BY: _____	
DRAWN BY: CWS		APPROVED BY: RMB	
HOR. SCALE 1:500		RELEASED FOR CONSTRUCTION	
VERTICAL 1:50		DATE: 12.07.10	



CITY OF WINNIPEG
PUBLIC WORKS DEPARTMENT
ENGINEERING DIVISION
2010 ACTIVE TRANSPORTATION PROGRAM
BISHOP GRANDIN GREENWAY
PHASE II SOUTH SIDE PATHWAY EXTENSION
PEMBINA HIGHWAY TO 866m WEST OF PEMBINA HIGHWAY
STA. 2+079.69 TO 2+250

C-01
SHEET 1 OF 6

Jul 14, 2010 1:14pm P:\509078-000 2009 Active Transportation Program\MM DRAWINGS\Phase II AutoCAD DWG\509078-000 2009 Active Transportation Program\MM DRAWINGS\Phase II AutoCAD DWG\509078-Phase II-CAD 100712.dwg -tab:C-01 2+079.69 TO 2+250