

NOTES:

1. ALL WORK AND MATERIALS TO BE IN ACCORDANCE WITH THE LATEST REVISIONS OF THE CITY OF WINNIPEG STANDARD CONSTRUCTION SPECIFICATIONS.
2. CONTRACTOR TO VERIFY DEPTH OF UTILITIES PRIOR TO CONSTRUCTION.
3. LOCATION OF UNDERGROUND STRUCTURES AS SHOWN ARE BASED ON THE BEST INFORMATION AVAILABLE, BUT NO GUARANTEE IS GIVEN THAT ALL EXISTING UTILITIES ARE SHOWN OR THAT THE GIVEN LOCATIONS ARE EXACT. CONFIRMATION OF EXISTENCE AND EXACT LOCATION OF ALL SERVICES MUST BE OBTAINED FROM THE INDIVIDUAL UTILITIES BEFORE PROCEEDING WITH CONSTRUCTION.
4. EXCAVATED MATERIAL TO BE USED AS BACKFILL WHERE REQUIRED.
5. ALL SURFACES TO BE MAINTAINED OR RESTORED TO PREVIOUS CONDITION OR BETTER.
6. REFER TO CITY OF WINNIPEG E-SPEC FOR INSTALLATION OF DETECTABLE WARNING SURFACE TILES (CONTACT BRUCE PETERS @ 986-5302 FOR FURTHER INFORMATION).



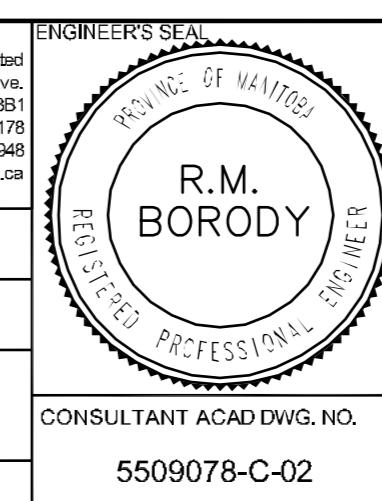
METRIC
WHOLE NUMBERS INDICATE MILLIMETERS
DECIMALIZED NUMBERS INDICATE METERS

NOTE:
These design documents are prepared solely for the use by the party with whom the design professional has entered into a contract and there are no representations of any kind made by the design professional to any party with whom the design professional has not entered into a contract.

ASPHALT PATHWAY	○	CMP CULVERT	□	EXISTING GROUND	---	LOCATIONS APPROVED	---	
PATHWAY CENTRELINE	---	MANHOLE	○	PROPOSED CENTERLINE	---	UNDERGROUND STRUCTURES	---	
PROPERTY LINE	---	CATCH BASIN	□			SIGNED BY:		
WALKWAY ELEVATION	(32.50)	HYDRO POLE	HP			SUPV U/G STRUCTURES	DATE	
WATER VALVE		HYDRO POLE WITH LIGHT	HP					
SWALE								
MTS CABLE								
SEWER								
CONC. WWS								
WATER								
EXISTING DITCH FLOW								
EXISTING	LEGEND-PLAN	PROPOSED	EXISTING	LEGEND-PLAN	PROPOSED	EXISTING	LEGEND-PROFILE	PROPOSED

G.B.M. ELEV. 232.335	CITY OF WINNIPEG MAPPING AND SURVEYS CAP IN CONCRETE PILE 5/8 CORNER OF BISHOP GRANDIN BLVD AND WAVERLY AVE.
DESIGNED BY	CWS
CHECKED BY	
DRAWN BY	CWS
APPROVED BY	RMB
RELEASED FOR CONSTRUCTION	
DATE: 12.07.10	

NO. REVISIONS	DATE	BY
4		
3		
2	12.07.10	RMB
1	20.08.09	RMB
1	ISSUED FOR REVIEW	



Winnipeg CITY OF WINNIPEG
PUBLIC WORKS DEPARTMENT
ENGINEERING DIVISION

2010 ACTIVE TRANSPORTATION PROGRAM
BISHOP GRANDIN GREENWAY
PHASE II SOUTH SIDE PATHWAY EXTENSION

PEMBINA HIGHWAY TO 866m WEST OF PEMBINA HIGHWAY
STA. 2+250 TO 2+500

C-02

SHEET 2 OF 6