

Jul 14, 2010 - 1:16pm  
 P:\5509078-000\5509078-000\2009 Active Transportation Program\MM DRAWINGS\Phase II AutoCAD DWG\5509078-Phase II-CAD 100712.dwg -tab:C-04 2+880 TO 3+050.55

NOTE:  
 These design documents are prepared solely for the use by the party with whom the design professional has entered into a contract and there are no representations of any kind made by the design professional to any party with whom the design professional has not entered into a contract.

**NOTES:**

1. ALL WORK AND MATERIALS TO BE IN ACCORDANCE WITH THE LATEST REVISIONS OF THE CITY OF WINNIPEG STANDARD CONSTRUCTION SPECIFICATIONS.
2. CONTRACTOR TO VERIFY DEPTH OF UTILITIES PRIOR TO CONSTRUCTION.
3. LOCATION OF UNDERGROUND STRUCTURES AS SHOWN ARE BASED ON THE BEST INFORMATION AVAILABLE, BUT NO GUARANTEE IS GIVEN THAT ALL EXISTING UTILITIES ARE SHOWN OR THAT THE GIVEN LOCATIONS ARE EXACT. CONFIRMATION OF EXISTENCE AND EXACT LOCATION OF ALL SERVICES MUST BE OBTAINED FROM THE INDIVIDUAL UTILITIES BEFORE PROCEEDING WITH CONSTRUCTION.
4. EXCAVATED MATERIAL TO BE USED AS BACKFILL WHERE REQUIRED.
5. ALL SURFACES TO BE MAINTAINED OR RESTORED TO PREVIOUS CONDITION OR BETTER.
6. REFER TO CITY OF WINNIPEG E-SPEC FOR INSTALLATION OF DETECTABLE WARNING SURFACE TILES (CONTACT BRUCE PETERS @ 986-5302 FOR FURTHER INFORMATION).



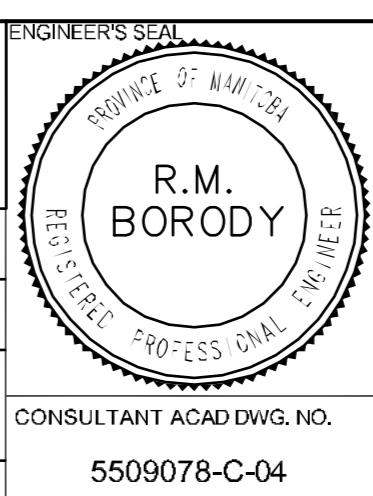
**METRIC**  
 WHOLE NUMBERS INDICATE MILLIMETERS  
 DECIMALIZED NUMBERS INDICATE METERS

EXISTING	LEGEND-PLAN	PROPOSED	EXISTING	LEGEND-PLAN	PROPOSED	EXISTING	LEGEND-PROFILE	PROPOSED
	ASPHALT PATHWAY			PROPOSED CONCRETE PATH			PATHWAY CENTRELINE	
	PROPERTY LINE			WATER VALVE			MTS CABLE	
	CONC. WWS			EXISTING DITCH FLOW			MANHOLE	
	HYDRO POLE			HYDRO POLE WITH LIGHT				

NO.	REVISIONS	DATE	BY
4			
3			
2	REVISED VERTICAL GEOMETRY	12.07.10	RMB
1	ISSUED FOR REVIEW	20.08.09	RMB

G.B.M. ELEV.	PROPOSED CENTERLINE
232.335	

<b>MMMGROUP</b>	
DESIGNED BY	CVWS/MR
CHECKED BY	
DRAWN BY	CVWS/MR
APPROVED BY	RMB
HOR. SCALE	1:500
VERTICAL	1:50
DATE	12.07.10



**CITY OF WINNIPEG**  
**PUBLIC WORKS DEPARTMENT**  
**ENGINEERING DIVISION**

2010 ACTIVE TRANSPORTATION PROGRAM  
 BISHOP GRANDIN GREENWAY  
 PHASE II SOUTH SIDE PATHWAY EXTENSION

PEMBINA HIGHWAY TO 866m WEST OF PEMBINA HIGHWAY  
 STA. 2+880 TO 3+050.55

**C-04**

SHEET 4 OF 6