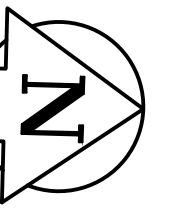


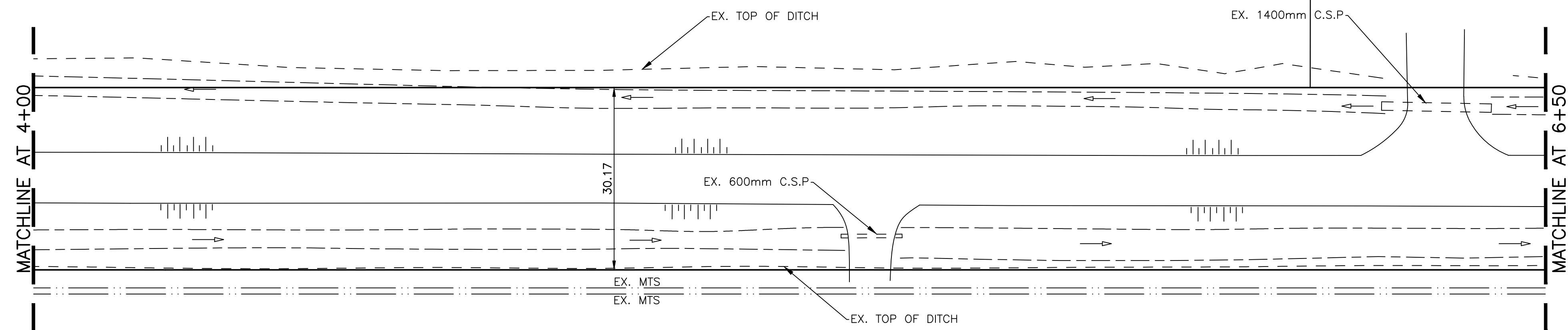
NOTES:

- CLEAN AND REGRADE EXISTING DITCH AS DIRECTED BY CONTRACT ADMINISTRATOR
- RENEW EXISTING APPROACHES AS DIRECTED BY CONTRACT ADMINISTRATOR
- MAINTAIN ACCESS TO EX. APPROACHES

CHAINAGE ALONG CENTER OF ROAD



MURDOCK ROAD



BENCHMARK:
 N. SIDE COPELAND ST., E. OF MCFADDEN AVE., TBLT. IN E. CONC.
 FOUNDATION 0.5m N. & 0.4m BELOW CEDAR SIDING OF S.E.
 COR. NO. 1113 COPELAND ST., (TBLT. FACING DRIVEWAY).

METRIC
 WHOLE NUMBERS INDICATE MILLIMETRES
 DECIMALIZED NUMBERS INDICATE METRES

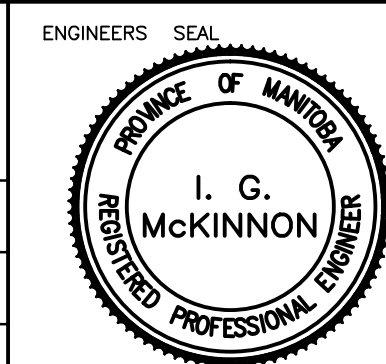


EXISTING	LEGEND - PLAN	PROPOSED	EXISTING	LEGEND - PLAN	PROPOSED	EXISTING	LEGEND - PROFILE	PROPOSED
	WATERMAIN			HYDRO			CENTER LINE	
	HYDRANT			M.T.S.			NORTH GUTTER LINE	
	VALVE			GRAVEL/CHIP SEAL			SOUTH GUTTER LINE	
	BOTTOM OF DITCH			ASPHALT			WEST DITCH	
	TOP OF DITCH			PROPERTY LINE			EAST DITCH	
	WASTE WATER SEWER			TESTHOLE				
	MANHOLE			ELEVATIONS				
	CATCH BASIN			CULVERT				
	CURB INLET			FLOW DIRECTION				
	TRAFFIC SIGNAL							
	GAS							

LOCATION APPROVED

SUPV. U/G STRUCTURES COMMITTEE DATE
 NOTE:
 LOCATION OF UNDERGROUND STRUCTURES AS SHOWN ARE BASED ON THE BEST INFORMATION AVAILABLE BUT NO GUARANTEE IS GIVEN THAT ALL EXISTING UTILITIES ARE SHOWN OR THAT THE GIVEN LOCATIONS ARE EXACT. CONFIRMATION OF EXISTENCE AND EXACT LOCATION OF ALL SERVICES MUST BE OBTAINED FROM THE INDIVIDUAL UTILITIES BEFORE PROCEEDING WITH CONSTRUCTION.

B.M. ELEV.	CWM: 30-012 234.393
DESIGNED BY	R.H.
CHECKED BY	S.M.
DRAWN BY	R.H.
APPROVED BY	I.MCK.
HOR. SCALE:	1:500
VERT. SCALE:	1:50
RELEASSED FOR CONSTRUCTION	
DATE	JUNE 2010



Winnipeg THE CITY OF WINNIPEG
 PUBLIC WORKS DEPARTMENT

2010 GRANULAR ROAD RENEWALS
 MURDOCK ROAD
 FROM MATCHLINE AT STATION 4+00
 TO MATCHLINE AT STATION 6+50

CITY DRAWING NO.
 SHEET 2 OF 6
 559-2010