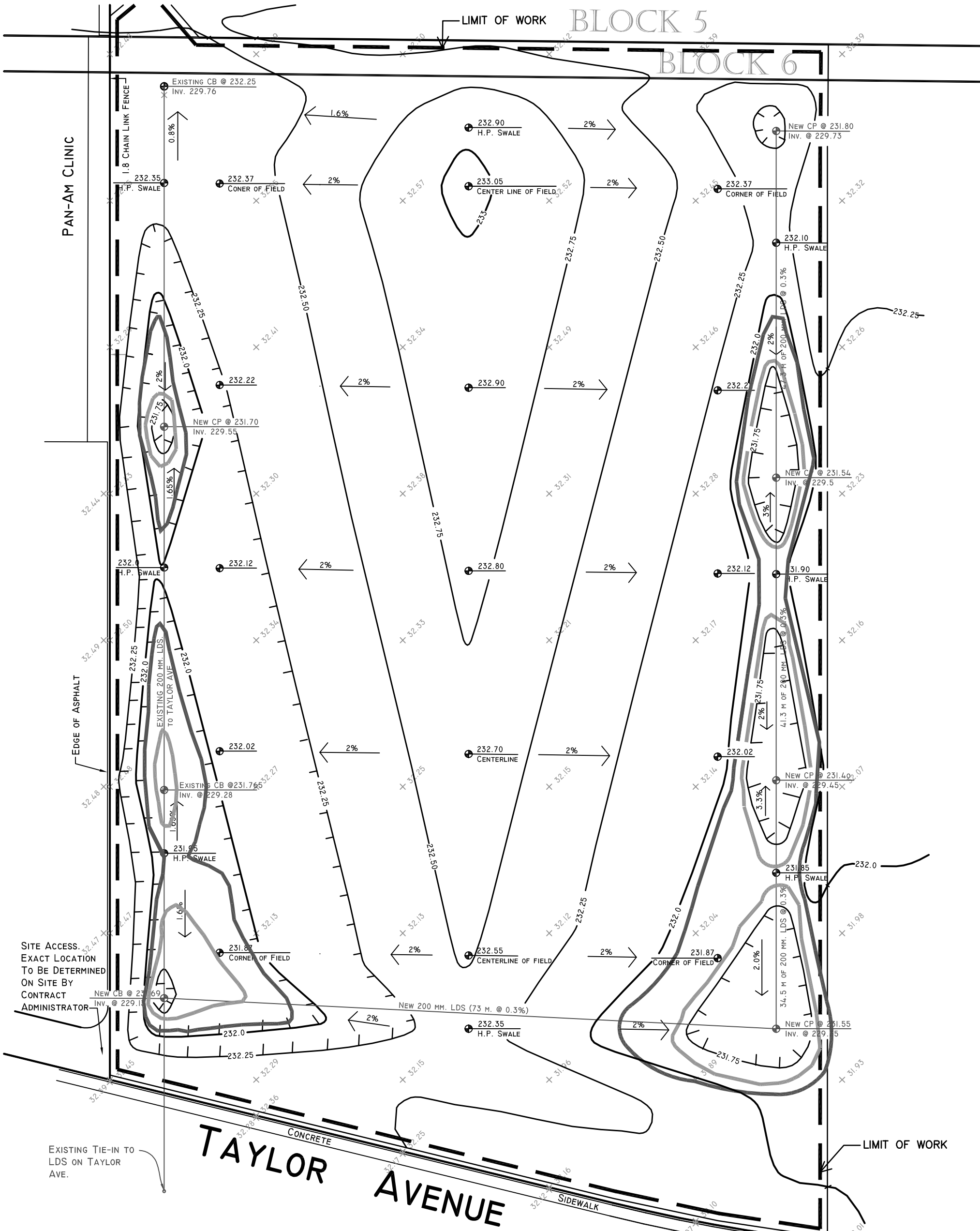


**STORM WATER DISCHARGE CRITERIA**

- RUNOFF FLOWS DETERMINED BY THE RATIONAL METHOD,  $Q=CIA$
- RAINFALL INTENSITY (1) = 5 YEAR WINNIPEG DESIGN STORM,  $I=47.2/(t+8)^{0.28}$
- RAINFALL INTENSITY (1) = 25 YEAR WINNIPEG DESIGN STORM,  $I=72.5/(t+8)^{0.42}$
- TIME OF CONCENTRATION = 10 MINUTES, AREA 3.75 ACRES.  
'C' ALLOWABLE = 0.15, 'Q' ALLOWABLE = 5 YEAR. - 2.41 cfs
- 'Q' (5 YEAR) - POST DEVELOPMENT = 3.54 cfs  
- WITH FLOW RESTRICTOR = 2.30 cfs
- 'Q' (25 YEAR) - POST DEVELOPMENT = 5.38 cfs  
- WITH FLOW RESTRICTOR = 2.36 cfs  
- REQUIRED ON SITE STORAGE = 8566 cu.ft.  
- AVAILABLE ON SITE STORAGE = 13082 cu.ft.
- FLOW CONTROLLED THROUGH USE OF ORIFICES AS SHOWN IN ORIFICE DETAIL.



SITE ACCESS. EXACT LOCATION TO BE DETERMINED ON SITE BY CONTRACT ADMINISTRATOR

**NOTE:**

1. SOD ENTIRE PROJECT AREA TO THE LIMIT OF WORK (1M INSIDE PROPERTY LINE)

**LEGEND:**

5 YEAR PONDING  
 25 YEAR PONDING

LOCATION OF UNDERGROUND STRUCTURES AS SHOWN ARE BASED ON THE BEST INFORMATION AVAILABLE BUT NO GUARANTEE IS GIVEN THAT ALL EXISTING UTILITIES ARE SHOWN OR THAT THE GIVEN LOCATIONS ARE EXACT. CONFIRMATION OF EXISTENCE AND EXACT LOCATION OF ALL SERVICES MUST BE OBTAINED FROM THE INDIVIDUAL UTILITIES BEFORE PROCEEDING WITH CONSTRUCTION.

<p>THE CITY OF WINNIPEG Planning, Property and Development Department Planning and Land Use Division Unit 15 - 30 Fort Street, Winnipeg, MB, (R3C 4X5)</p>	<p>LOMBARD NORTH GROUP 505-93 Lombard Ave. Winnipeg Manitoba R3B 3B1 Tel (204) 943 3896 Fax (204) 947 5696</p>
--	--

DESIGNED BY	CN	CHECKED BY	CN	APPROVED BY	CN
DRAWN BY	TM	RELEASED FOR CONSTRUCTION			
HORIZ. SCALE	1 : 500				
DATE	JULY 20 /10	MANAGER,	PLANNING AND LAND USE DIVISION	DATE	

<p>DRAWING TITLE</p> <p><b>GRANT PARK ATHLETIC FIELD DEVELOPMENT- GRADING &amp; DRAINAGE PLAN</b></p>	<p>CAD DRAWING NO.</p> <p>DRAWING NO.</p> <p><b>L3</b></p>
---	--