

WATER SERVICE INFORMATION

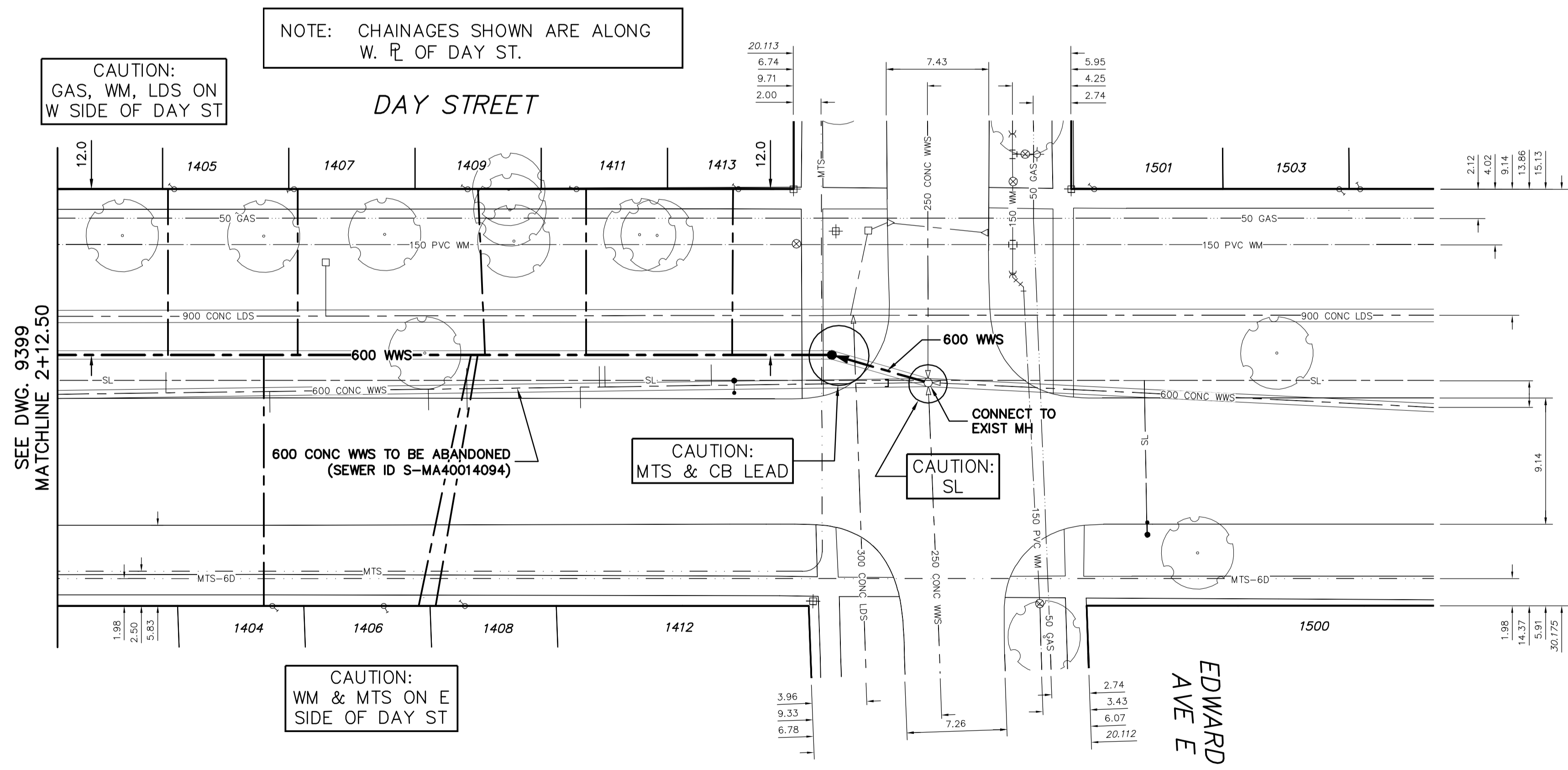
ADDRESS	SIZE(mm) & TYPE (STREET)	SIZE(mm) & TYPE (PROP)	SHORT & LONG MEASUREMENT	CORP. LOCATION
1404 DAY ST RESIDENTIAL	20 COPPER	20	-	1.3 S OF S/C
1405 DAY ST RESIDENTIAL	20 COPPER	20	38.76 SSL EDWARD	OPP S/C
1406 DAY ST RESIDENTIAL	20 COPPER	20	44.85 SSL EDWARD	6.8 N OF S/C
1407 DAY ST RESIDENTIAL	20 COPPER	20	30.77 SSL EDWARD	9.1 N OF S/C
1408 DAY ST RESIDENTIAL	20 COPPER	20	36.15 SSL EDWARD	0.8 N OF S/C
1409 DAY ST RESIDENTIAL	20 COPPER	20	24.86 SSL EDWARD	1.2 N OF S/C
1411 DAY ST RESIDENTIAL	20 COPPER	20	23.65 SSL EDWARD	1.8 N OF S/C
1412 DAY ST RESIDENTIAL	20 COPPER	20	15.55 SSL EDWARD	2.4 W OF S/C
1413 DAY ST RESIDENTIAL	20 COPPER	20	2.3 W OF S/C	0.2 N OF S/C
1413 DAY ST RESIDENTIAL	20 COPPER	20	3.91 SSL EDWARD	-

CONSTRUCTION NOTES:

1. INSTALL SEWER BY TRENCHLESS METHODS.
2. CONFIRM THE LOCATION OF ALL SEWER SERVICES.
3. BACKFILL UNDER PAVEMENT, IN SIDEWALKS, & WITHIN 1.0 OF PAVEMENT TO BE CLASS 3.
4. BACKFILL IN BOULEVARD TO BE CLASS 5.
5. RENEW SEWER SERVICES TO R.
6. INSTALL SEWER SERVICE RISERS TO ELEVATION WHERE MINIMUM SLOPE OF 1% IS MAINTAINED FOR ALL SERVICES.

NOTE: CHAINAGES SHOWN ARE ALONG W. R. OF DAY ST.

CAUTION: GAS, WM, LDS ON W SIDE OF DAY ST



SEWER SERVICE INFORMATION

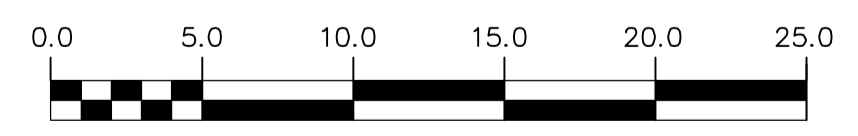
ADDRESS	SIZE	R. DIST. JUNCTION TIE
1404 DAY ST RESIDENTIAL	-	-
1405 DAY ST RESIDENTIAL	-	0.39 N OF SL
1406 DAY ST RESIDENTIAL	-	55.42 S MH AT EDWARD
1407 DAY ST RESIDENTIAL	-	3.11 N OF NL (DBL W/1406)
1408 DAY ST RESIDENTIAL	-	33.19 S MH AT EDWARD
1409 DAY ST RESIDENTIAL	-	4.57 N OF SL
1411 DAY ST RESIDENTIAL	-	24.69 S MH AT EDWARD
1412 DAY ST RESIDENTIAL	-	3.26 N OF SL
1413 DAY ST RESIDENTIAL	-	17.33 S MH AT EDWARD
1413 DAY ST RESIDENTIAL	-	SERV. OFF EDWARD
1413 DAY ST RESIDENTIAL	-	75.32 W 1ST MH E DAY
1413 DAY ST RESIDENTIAL	-	-

SEWER JUNCTION INFORMATION FROM SEWER VIDEO INSPECTION SEWER ID S-MA40014094

DISTANCE FROM MH ID S-MH40012726			
15.7	S	150	WEST CNI
23.4	S	150	WEST JN
23.8	S	150	WEST CN
25.2	S	150	EAST JK
33.4	S	150	EAST CN
33.4	S	150	WEST CN
36.2	S	150	TOP CN
47.7	S	150	EAST CNI
55.2	S	150	WEST CN

METRIC
WHOLE NUMBERS INDICATE MILLIMETRES
DECIMALIZED NUMBERS INDICATE METRES

WARNING
IF POWER EQUIPMENT OR EXPLOSIVES ARE TO BE USED FOR EXCAVATION ON THIS PROJECT THE CONTRACTOR MUST:
1) NOTIFY THE GAS COMPANY OF THE PROPOSED LOCATION OF EXCAVATION.
2) TAKE PRECAUTION TO AVOID DAMAGE TO GAS COMPANY INSTALLATIONS.
SEE PROVINCIAL REGULATION 210/72 FOR DETAILS



200 WM	WATERMAIN	200 WM	SL, HYDRO	150 WM	WATERMAIN	150 WM
⊕	HYDRANT	⊕	MTS	⊕	HYDRANT	⊕
⊕	VALVE	⊕	TRAFFIC SIGNALS	⊕	VALVE	⊕
⊕	LAND DRAINAGE SEWER	⊕	GAS	⊕	LAND DRAINAGE SEWER	⊕
⊕	WASTEWATER SEWER	⊕	SURVEY BAR	⊕	WASTEWATER SEWER	⊕
○	MANHOLE	○	FENCE	⊕	PROFILE	⊕
□	CATCH BASIN	□	POLE - HYDRO, MTS	⊕	GROUND ABOVE PIPE	⊕
▽	CURB INLET	▽	CURB STOP	⊕	DITCH (NORTH & WEST)	⊕
⊕	JUNCTIONS	⊕	GUY ANCHOR	⊕	DITCH (SOUTH & EAST)	⊕
⊕	CULVERT	⊕	LIGHT STANDARD	⊕	GUTTER (NORTH & WEST)	⊕
⊕	ANODE	⊕	TREE	⊕	GUTTER (SOUTH & EAST)	⊕
⊕	EXISTING	⊕	PROPOSED	⊕	EXISTING	⊕

LOCATION APPROVED UNDERGROUND STRUCTURES		B.M. ELEV.	FIELD BOOK #:
SUPV. U/G STRUCTURES COMMITTEE	DATE	POSTED TO LBIS	
NOTE: LOCATION OF UNDERGROUND STRUCTURES AS SHOWN ARE BASED ON THE BEST INFORMATION AVAILABLE BUT NO GUARANTEE IS GIVEN THAT ALL EXISTING UTILITIES ARE SHOWN OR THAT THE GIVEN LOCATIONS ARE EXACT. CONFIRMATION OF EXISTENCE AND EXACT LOCATION OF ALL SERVICES MUST BE OBTAINED FROM THE INDIVIDUAL UTILITIES BEFORE PROCEEDING WITH CONSTRUCTION.			
NO.	REVISIONS	DATE	BY
1	REVISED FOR ADDENDUM	10.08.27	CJH

CITY OF WINNIPEG WATER AND WASTE ENGINEERING DIVISION

DESIGNED BY: RC
CHECKED BY: SC
DRAWN BY: CJH
APPROVED BY: SC
HOR. SCALE: 1:250
VERTICAL: 1:50
RELEASED FOR CONSTRUCTION: DATE

ENGINEER'S SEAL
ORIGINAL SIGNED BY
S.R.J. COURNOYER
10/08/16
BID OPPORTUNITY: 572-2010
FILENAME: 9398.dwg
PLOT DATE: 2010 08 27

THE CITY OF WINNIPEG WATER AND WASTE DEPARTMENT

2010 SEWER RENEWALS AND REPAIRS CONTRACT 20
DAY STREET
MH AT EDWARD AVENUE E TO MH AT NEWMAN AVENUE E

SHEET 17 OF 20
CITY DRAWING NUMBER
9398