

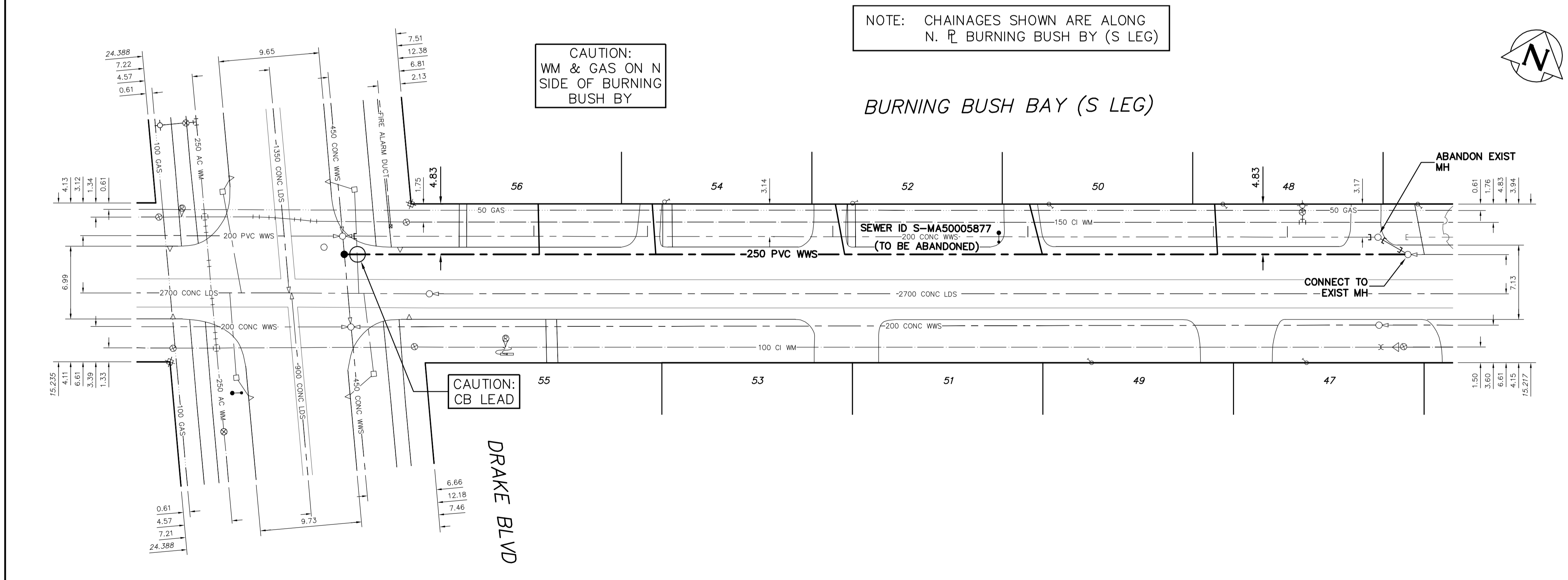
**WATER SERVICE INFORMATION**

ADDRESS	SIZE(mm) & TYPE (STREET)	SIZE(mm) & TYPE (PROP)	SHORT & LONG MEASUREMENT	CORP. LOCATION
47 BURNING BUSH BY RESIDENTIAL	20 COPPER	20	84.55 EEL DRAKE	-
48 BURNING BUSH BY RESIDENTIAL	20 COPPER	20	77.90 EEL DRAKE	-
49 BURNING BUSH BY RESIDENTIAL	20 COPPER	20	64.08 EEL DRAKE	-
50 BURNING BUSH BY RESIDENTIAL	20 COPPER	20	61.13 EEL DRAKE	-
51 BURNING BUSH BY RESIDENTIAL	20 COPPER	20	-	-
52 BURNING BUSH BY RESIDENTIAL	20 COPPER	20	42.24 EEL DRAKE	-
53 BURNING BUSH BY RESIDENTIAL	20 COPPER	20	24.28 EEL DRAKE	-
54 BURNING BUSH BY RESIDENTIAL	20 COPPER	20	-	-
55 BURNING BUSH BY RESIDENTIAL	20 COPPER	20	-	-
56 BURNING BUSH BY RESIDENTIAL	20 COPPER	20	-	-

**SEWER SERVICE INFORMATION**

ADDRESS	SIZE	R DIST	JUNCTION TIE
47 BURNING BUSH BY RESIDENTIAL	20	-	SERVICED OFF 200 CONC WWS ON S SIDE OF BURNING BUSH BY
48 BURNING BUSH BY RESIDENTIAL	20	-	-
49 BURNING BUSH BY RESIDENTIAL	20	-	SERVICED OFF 200 CONC WWS ON S SIDE OF BURNING BUSH BY
50 BURNING BUSH BY RESIDENTIAL	20	-	-
51 BURNING BUSH BY RESIDENTIAL	20	-	SERVICED OFF 200 CONC WWS ON S SIDE OF BURNING BUSH BY
52 BURNING BUSH BY RESIDENTIAL	20	-	-
53 BURNING BUSH BY RESIDENTIAL	20	-	SERVICED OFF 200 CONC WWS ON S SIDE OF BURNING BUSH BY
54 BURNING BUSH BY RESIDENTIAL	20	-	-
55 BURNING BUSH BY RESIDENTIAL	20	-	SERVICED OFF 200 CONC WWS ON S SIDE OF BURNING BUSH BY
56 BURNING BUSH BY RESIDENTIAL	20	-	-

- CONSTRUCTION NOTES:**
- INSTALL SEWER BY TRENCHLESS METHODS.
  - CONFIRM THE LOCATION OF ALL SEWER SERVICES.
  - BACKFILL UNDER PAVEMENT, IN SIDEWALKS, & WITHIN 1.0 OF PAVEMENT TO BE CLASS 3.
  - BACKFILL IN BOULEVARD TO BE CLASS 5.
  - RENEW SEWER SERVICES TO R.
  - INSTALL SEWER SERVICE RISERS TO ELEVATION WHERE MINIMUM SLOPE OF 1% IS MAINTAINED FOR ALL SERVICES.



**SEWER JUNCTION INFORMATION FROM SEWER VIDEO INSPECTION SEWER ID S-MA50005877**

DISTANCE FROM MH ID S-MH50004984

DISTANCE	W	SIZE	DIRECTION	TYPE
8.7	W	150	NORTH	JN
15.8	W	150	NORTH	JN
33.6	W	150	NORTH	JN
52.3	W	150	NORTH	JN
70.1	W	150	NORTH	JN
81.0	W	150	NORTH	JN

**METRIC**  
WHOLE NUMBERS INDICATE MILLIMETRES  
DECIMALIZED NUMBERS INDICATE METRES

**WARNING**  
IF POWER EQUIPMENT OR EXPLOSIVES ARE TO BE USED FOR EXCAVATION ON THIS PROJECT THE CONTRACTOR MUST:  
1) NOTIFY THE GAS COMPANY OF THE PROPOSED LOCATION OF EXCAVATION.  
2) TAKE PRECAUTION TO AVOID DAMAGE TO GAS COMPANY INSTALLATIONS.  
SEE PROVINCIAL REGULATION 210/72 FOR DETAILS

<table border="1"> <tr><td>200 WM</td><td>WATERMAIN</td><td>200 WM</td><td>SL, HYDRO</td><td>150 WM</td><td>WATERMAIN</td><td>150 WM</td></tr> <tr><td>525 LDS</td><td>LAND DRAINAGE SEWER</td><td>525 LDS</td><td>TRAFFIC SIGNALS</td><td>300 LDS</td><td>LAND DRAINAGE SEWER</td><td>300 LDS</td></tr> <tr><td>375 WWS</td><td>WASTEWATER SEWER</td><td>375 WWS</td><td>GAS</td><td>250 WWS</td><td>WASTEWATER SEWER</td><td>250 WWS</td></tr> <tr><td>MANHOLE</td><td></td><td>MANHOLE</td><td>FENCE</td><td>€ PROFILE</td><td></td><td></td></tr> <tr><td>CATCH BASIN</td><td></td><td>CATCH BASIN</td><td>POLE - HYDRO, MTS</td><td>GROUND ABOVE PIPE</td><td></td><td></td></tr> <tr><td>CURB INLET</td><td></td><td>CURB INLET</td><td>CURB STOP</td><td>? DITCH (NORTH &amp; WEST)</td><td></td><td></td></tr> <tr><td>JUNCTIONS</td><td></td><td>JUNCTIONS</td><td>GUY ANCHOR</td><td>? DITCH (SOUTH &amp; EAST)</td><td></td><td></td></tr> <tr><td>CULVERT</td><td></td><td>CULVERT</td><td>LIGHT STANDARD</td><td>GUTTER (NORTH &amp; WEST)</td><td></td><td></td></tr> <tr><td>ANODE</td><td></td><td>ANODE</td><td>TREE</td><td>GUTTER (SOUTH &amp; EAST)</td><td></td><td></td></tr> <tr><td>EXISTING</td><td>LEGEND-PLAN</td><td>PROPOSED</td><td>EXISTING</td><td>LEGEND-PROFILE</td><td>PROPOSED</td><td>EXISTING</td></tr> </table>	200 WM	WATERMAIN	200 WM	SL, HYDRO	150 WM	WATERMAIN	150 WM	525 LDS	LAND DRAINAGE SEWER	525 LDS	TRAFFIC SIGNALS	300 LDS	LAND DRAINAGE SEWER	300 LDS	375 WWS	WASTEWATER SEWER	375 WWS	GAS	250 WWS	WASTEWATER SEWER	250 WWS	MANHOLE		MANHOLE	FENCE	€ PROFILE			CATCH BASIN		CATCH BASIN	POLE - HYDRO, MTS	GROUND ABOVE PIPE			CURB INLET		CURB INLET	CURB STOP	? DITCH (NORTH & WEST)			JUNCTIONS		JUNCTIONS	GUY ANCHOR	? DITCH (SOUTH & EAST)			CULVERT		CULVERT	LIGHT STANDARD	GUTTER (NORTH & WEST)			ANODE		ANODE	TREE	GUTTER (SOUTH & EAST)			EXISTING	LEGEND-PLAN	PROPOSED	EXISTING	LEGEND-PROFILE	PROPOSED	EXISTING	<p>LOCATION APPROVED UNDERGROUND STRUCTURES</p> <p>SUPV. U/G STRUCTURES COMMITTEE DATE</p> <p>NOTE: LOCATION OF UNDERGROUND STRUCTURES AS SHOWN ARE BASED ON THE BEST INFORMATION AVAILABLE BUT NO GUARANTEE IS GIVEN THAT ALL EXISTING UTILITIES ARE SHOWN OR THAT THE GIVEN LOCATIONS ARE EXACT. CONFIRMATION OF EXISTENCE AND EXACT LOCATION OF ALL SERVICES MUST BE OBTAINED FROM THE INDIVIDUAL UTILITIES BEFORE PROCEEDING WITH CONSTRUCTION.</p>	<p>B.M. ELEV. POSTED TO LBIS</p> <p>FIELD BOOK #:</p>	<p><b>CITY OF WINNIPEG WATER AND WASTE ENGINEERING DIVISION</b></p> <p>DESIGNED BY: RC CHECKED BY: SC</p> <p>DRAWN BY: CJH APPROVED BY: SC</p> <p>HOR. SCALE: 1:250 VERTICAL: 1:50</p> <p>DATE: 2010 08 16</p>	<p>ENGINEER'S SEAL</p> <p>ORIGINAL SIGNED BY: S.R.J. COURNOYER 10/08/16</p>	<p><b>THE CITY OF WINNIPEG WATER AND WASTE DEPARTMENT</b></p> <p>2010 SEWER RENEWALS AND REPAIRS CONTRACT 20</p> <p><b>BURNING BUSH BAY (S LEG)</b></p> <p>2ND MH E OF DRAKE BOULEVARD TO TO MH AT DRAKE BOULEVARD</p>	<p>SHEET 16 OF 20</p> <p>CITY DRAWING NUMBER: 9397</p>
200 WM	WATERMAIN	200 WM	SL, HYDRO	150 WM	WATERMAIN	150 WM																																																																						
525 LDS	LAND DRAINAGE SEWER	525 LDS	TRAFFIC SIGNALS	300 LDS	LAND DRAINAGE SEWER	300 LDS																																																																						
375 WWS	WASTEWATER SEWER	375 WWS	GAS	250 WWS	WASTEWATER SEWER	250 WWS																																																																						
MANHOLE		MANHOLE	FENCE	€ PROFILE																																																																								
CATCH BASIN		CATCH BASIN	POLE - HYDRO, MTS	GROUND ABOVE PIPE																																																																								
CURB INLET		CURB INLET	CURB STOP	? DITCH (NORTH & WEST)																																																																								
JUNCTIONS		JUNCTIONS	GUY ANCHOR	? DITCH (SOUTH & EAST)																																																																								
CULVERT		CULVERT	LIGHT STANDARD	GUTTER (NORTH & WEST)																																																																								
ANODE		ANODE	TREE	GUTTER (SOUTH & EAST)																																																																								
EXISTING	LEGEND-PLAN	PROPOSED	EXISTING	LEGEND-PROFILE	PROPOSED	EXISTING																																																																						