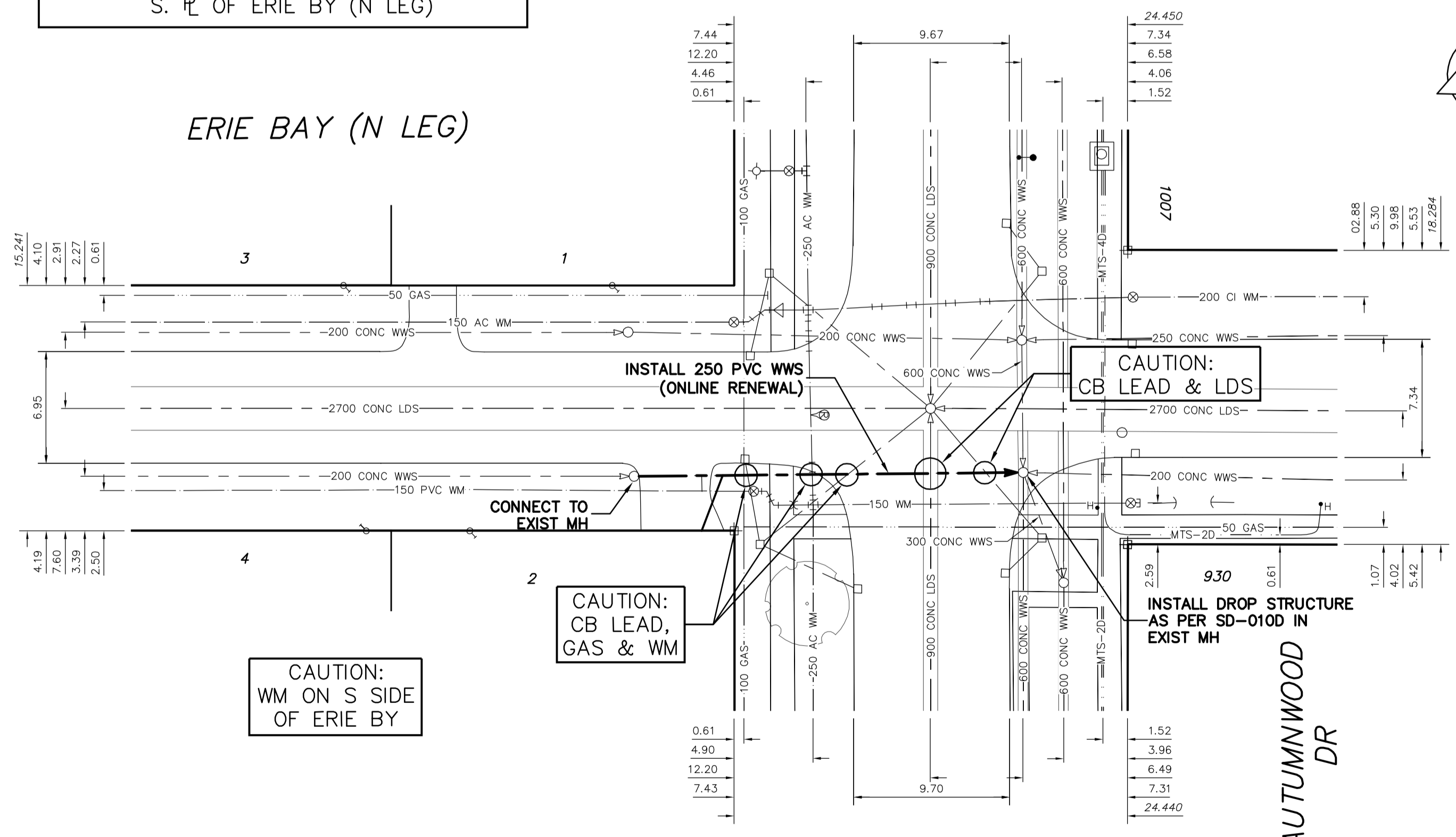


NOTE: CHAINAGES SHOWN ARE ALONG S. R. OF ERIE BY (N LEG)



- CONSTRUCTION NOTES:**
1. INSTALL SEWER BY TRENCHLESS METHODS.
  2. CONFIRM THE LOCATION OF ALL SEWER SERVICES.
  3. BACKFILL UNDER PAVEMENT, IN SIDEWALKS, & WITHIN 1.0 OF PAVEMENT TO BE CLASS 3.
  4. BACKFILL IN BOULEVARD TO BE CLASS 5.
  5. RENEW SEWER SERVICES TO R.
  6. INSTALL SEWER SERVICE RISERS TO ELEVATION WHERE MINIMUM SLOPE OF 1% IS MAINTAINED FOR ALL SERVICES.

**WATER SERVICE INFORMATION**

ADDRESS	SIZE(mm) & TYPE (STREET)	SIZE(mm) & TYPE (PROP)	SHORT & LONG MEASUREMENT	CORP. LOCATION
1 ERIE BY RESIDENTIAL	-	20 COPPER	-	-
2 ERIE BY RESIDENTIAL	20 COPPER	20 COPPER	7.55 WML AUTUMNWOOD	0.2 E OF S/C
			16.44 WML AUTUMNWOOD	

**SEWER SERVICE INFORMATION**

ADDRESS	SIZE	R. DIST	JUNCTION TIE
1 ERIE BY RESIDENTIAL	-	-	2.89 E OF WL
2 ERIE BY RESIDENTIAL	-	-	5.56 E OF WL

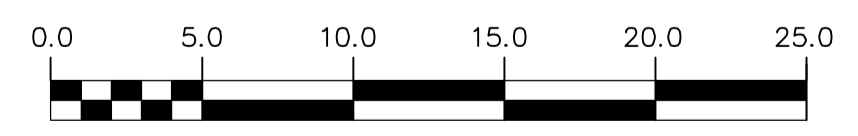
SEWER JUNCTION INFORMATION FROM SEWER VIDEO INSPECTION SEWER ID S-MA50005696

DISTANCE FROM MH ID S-MH50004843	
4.2 E	1500 SOUTH CX

**METRIC**  
WHOLE NUMBERS INDICATE MILLIMETRES  
DECIMALIZED NUMBERS INDICATE METRES

**WARNING**

IF POWER EQUIPMENT OR EXPLOSIVES ARE TO BE USED FOR EXCAVATION ON THIS PROJECT THE CONTRACTOR MUST:  
1) NOTIFY THE GAS COMPANY OF THE PROPOSED LOCATION OF EXCAVATION.  
2) TAKE PRECAUTION TO AVOID DAMAGE TO GAS COMPANY INSTALLATIONS.  
SEE PROVINCIAL REGULATION 210/72 FOR DETAILS



EXISTING	LEGEND-PLAN	PROPOSED	EXISTING	LEGEND-PLAN	PROPOSED	EXISTING	LEGEND-PROFILE	PROPOSED
200 WM	WATERMAIN	200 WM	SL, HYDRO	150 WM	WATERMAIN	150 WM	WATERMAIN	150 WM
525 LDS	LAND DRAINAGE SEWER	525 LDS	MTS	50 GAS	HYDRANT	300 LDS	HYDRANT	300 LDS
375 WWS	WASTEWATER SEWER	375 WWS	TRAFFIC SIGNALS	50 GAS	VALVE	250 WWS	VALVE	250 WWS
MANHOLE	MANHOLE	MANHOLE	GAS	50 GAS	LAND DRAINAGE SEWER	300 LDS	LAND DRAINAGE SEWER	300 LDS
CATCH BASIN	CATCH BASIN	CATCH BASIN	SURVEY BAR	50 GAS	WASTEWATER SEWER	250 WWS	WASTEWATER SEWER	250 WWS
CURB INLET	CURB INLET	CURB INLET	FENCE	50 GAS	€ PROFILE	250 WWS	€ PROFILE	250 WWS
JUNCTIONS	JUNCTIONS	JUNCTIONS	POLE - HYDRO, MTS	50 GAS	GROUND ABOVE PIPE	250 WWS	GROUND ABOVE PIPE	250 WWS
CULVERT	CULVERT	CULVERT	CURB STOP	50 GAS	€ DITCH (NORTH & WEST)	250 WWS	€ DITCH (NORTH & WEST)	250 WWS
ANODE	ANODE	ANODE	GUY ANCHOR	50 GAS	€ DITCH (SOUTH & EAST)	250 WWS	€ DITCH (SOUTH & EAST)	250 WWS
LEGEND-PLAN	LEGEND-PLAN	LEGEND-PLAN	LIGHT STANDARD	50 GAS	GUTTER (NORTH & WEST)	250 WWS	GUTTER (NORTH & WEST)	250 WWS
			TREE	50 GAS	GUTTER (SOUTH & EAST)	250 WWS	GUTTER (SOUTH & EAST)	250 WWS

LOCATION APPROVED UNDERGROUND STRUCTURES

SUPV. U/G STRUCTURES COMMITTEE	DATE

NOTE: LOCATION OF UNDERGROUND STRUCTURES AS SHOWN ARE BASED ON THE BEST INFORMATION AVAILABLE BUT NO GUARANTEE IS GIVEN THAT ALL EXISTING UTILITIES ARE SHOWN OR THAT THE GIVEN LOCATIONS ARE EXACT. CONFIRMATION OF EXISTENCE AND EXACT LOCATION OF ALL SERVICES MUST BE OBTAINED FROM THE INDIVIDUAL UTILITIES BEFORE PROCEEDING WITH CONSTRUCTION.

**CITY OF WINNIPEG WATER AND WASTE ENGINEERING DIVISION**

DESIGNED BY	RC	CHECKED BY	SC
DRAWN BY	CJH	APPROVED BY	SC
HOR. SCALE	1:250	RELEASED FOR CONSTRUCTION	
VERTICAL	1:50	DATE	
DATE	2010 08 16	DATE	

ENGINEER'S SEAL  
ORIGINAL SIGNED BY  
**S.R.J. COURNOYER**  
10/08/16

**THE CITY OF WINNIPEG WATER AND WASTE DEPARTMENT**

2010 SEWER RENEWALS AND REPAIRS CONTRACT 20

**ERIE BAY (N LEG)**  
1ST MH W OF AUTUMNWOOD DRIVE TO MH AT AUTUMNWOOD DRIVE

SHEET 19 OF 20  
CITY DRAWING NUMBER  
9400