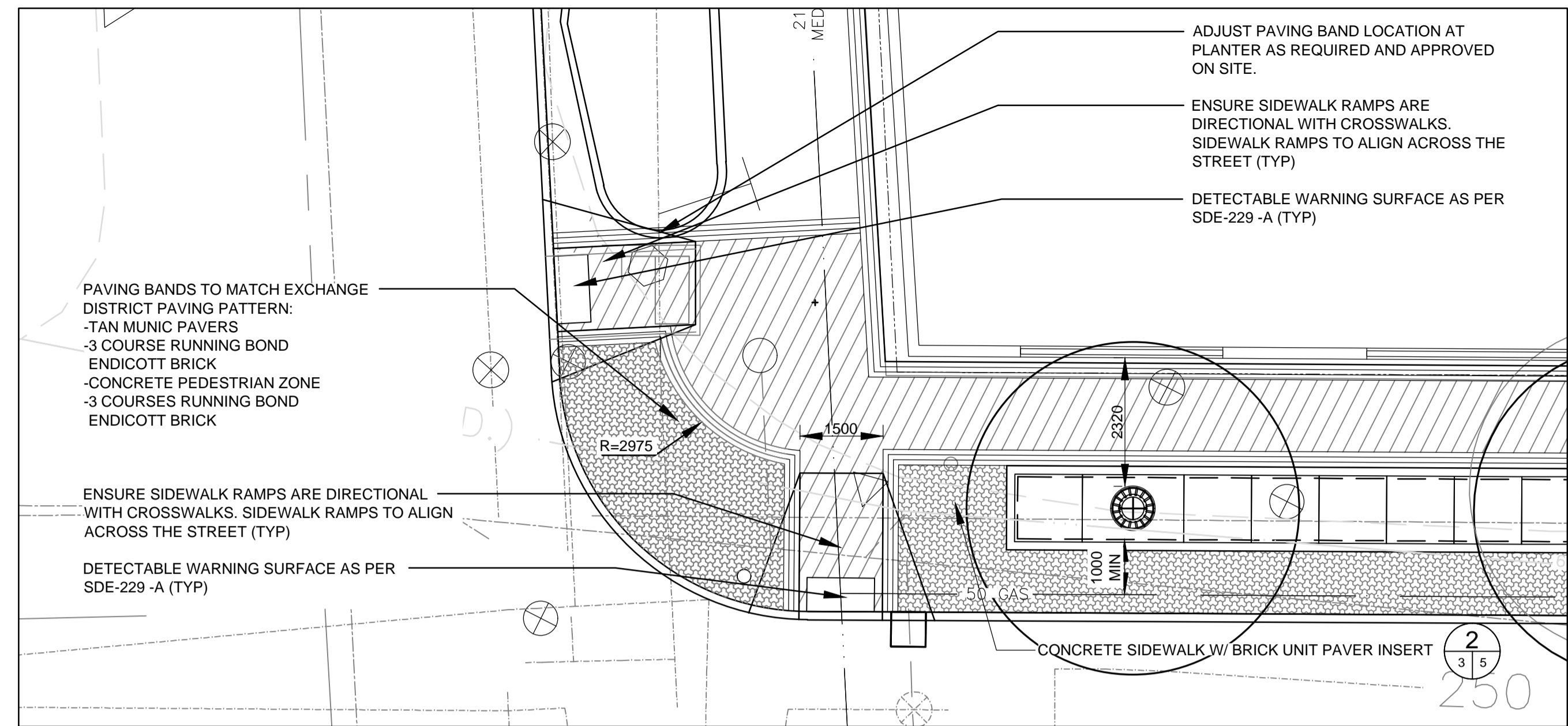
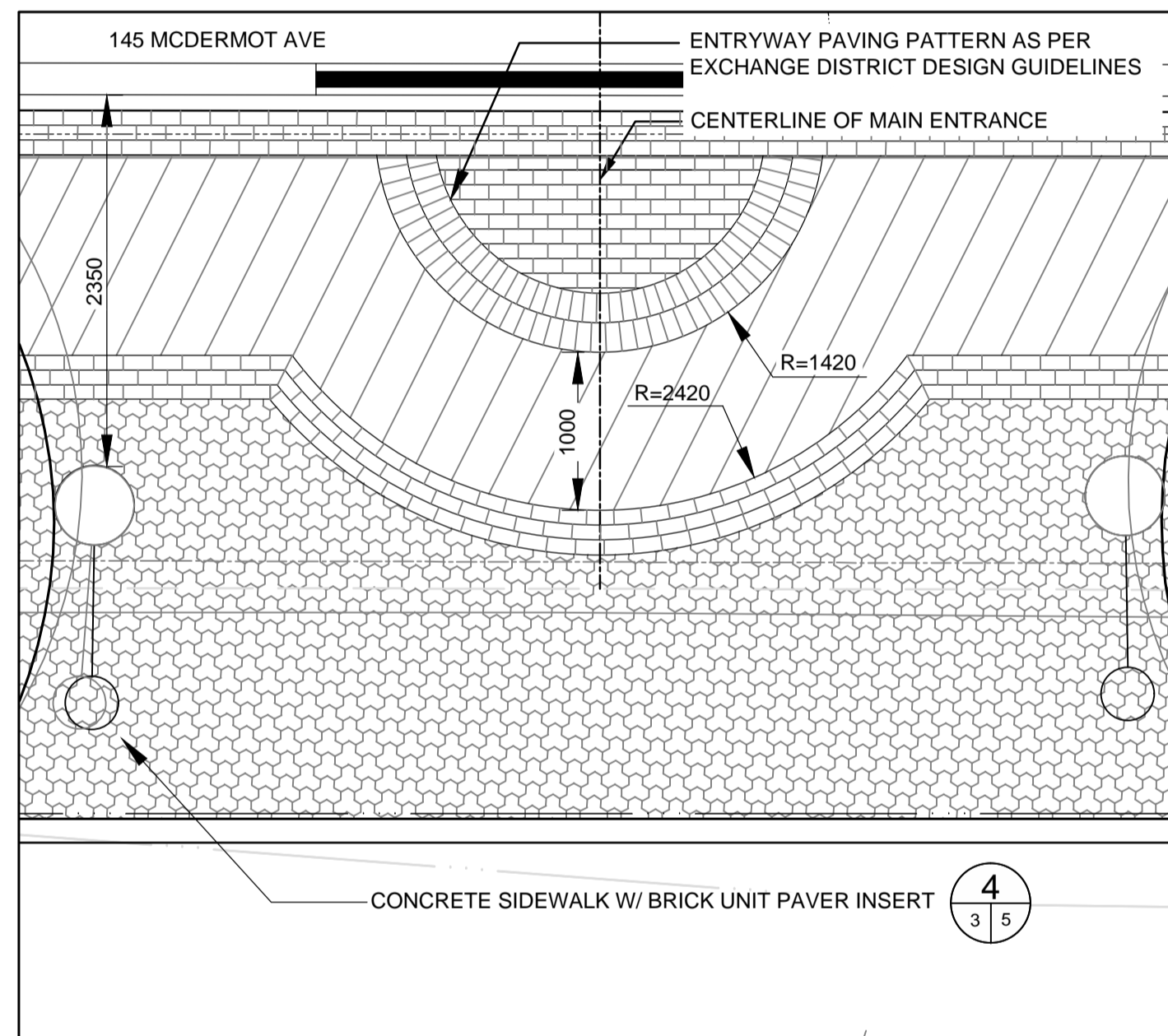


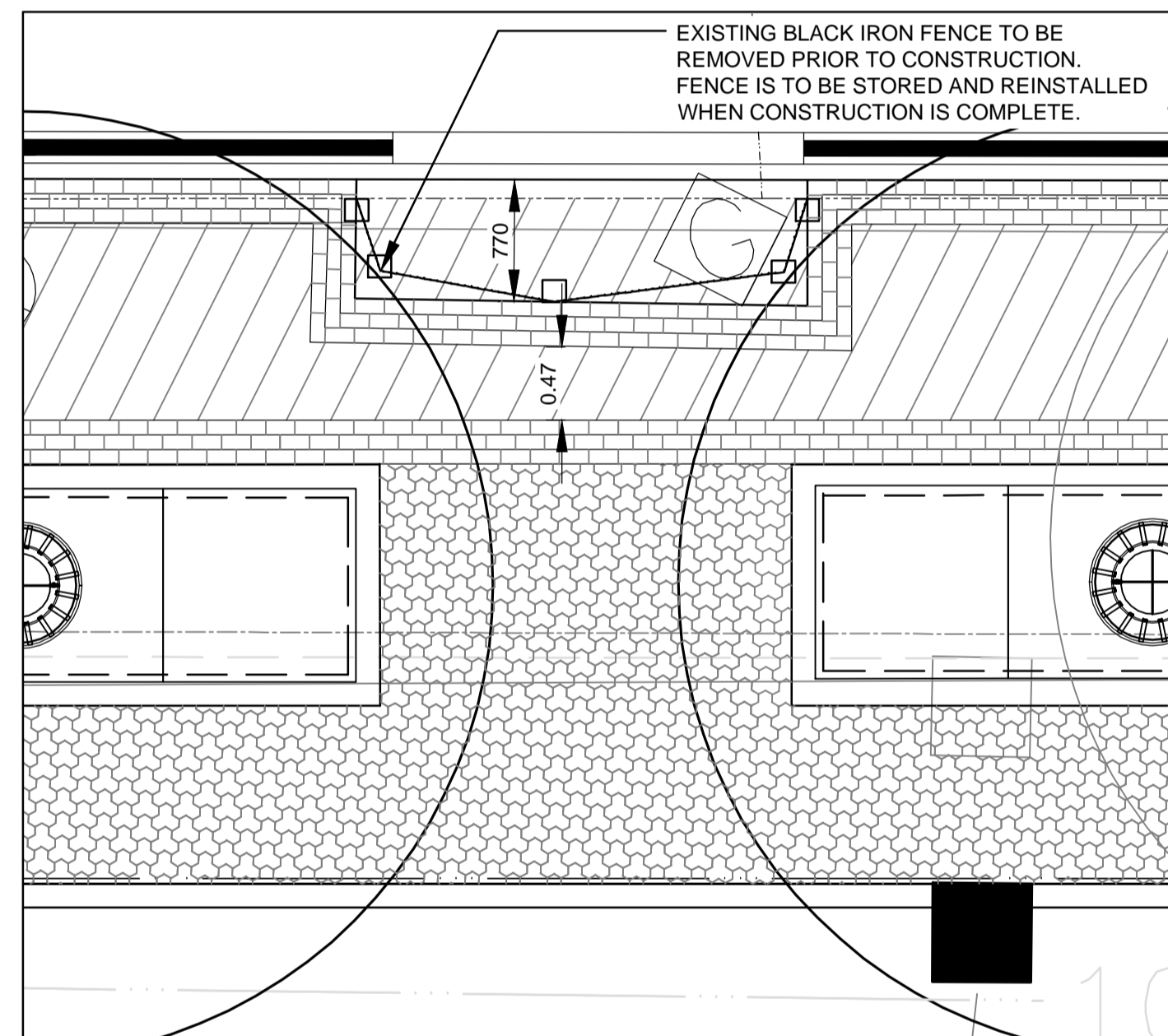
LAYOUT 3



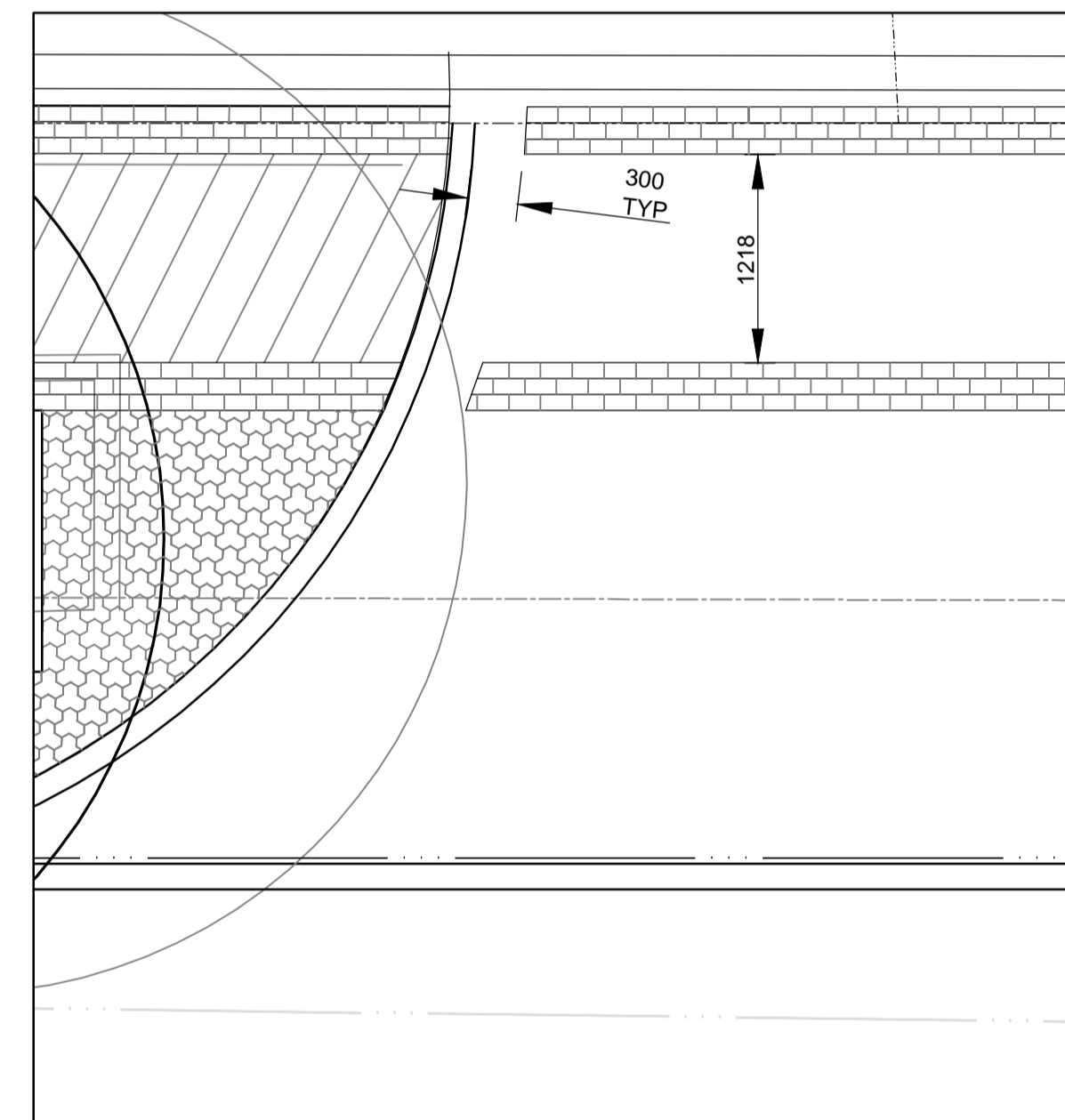
ENLARGEMENT 1



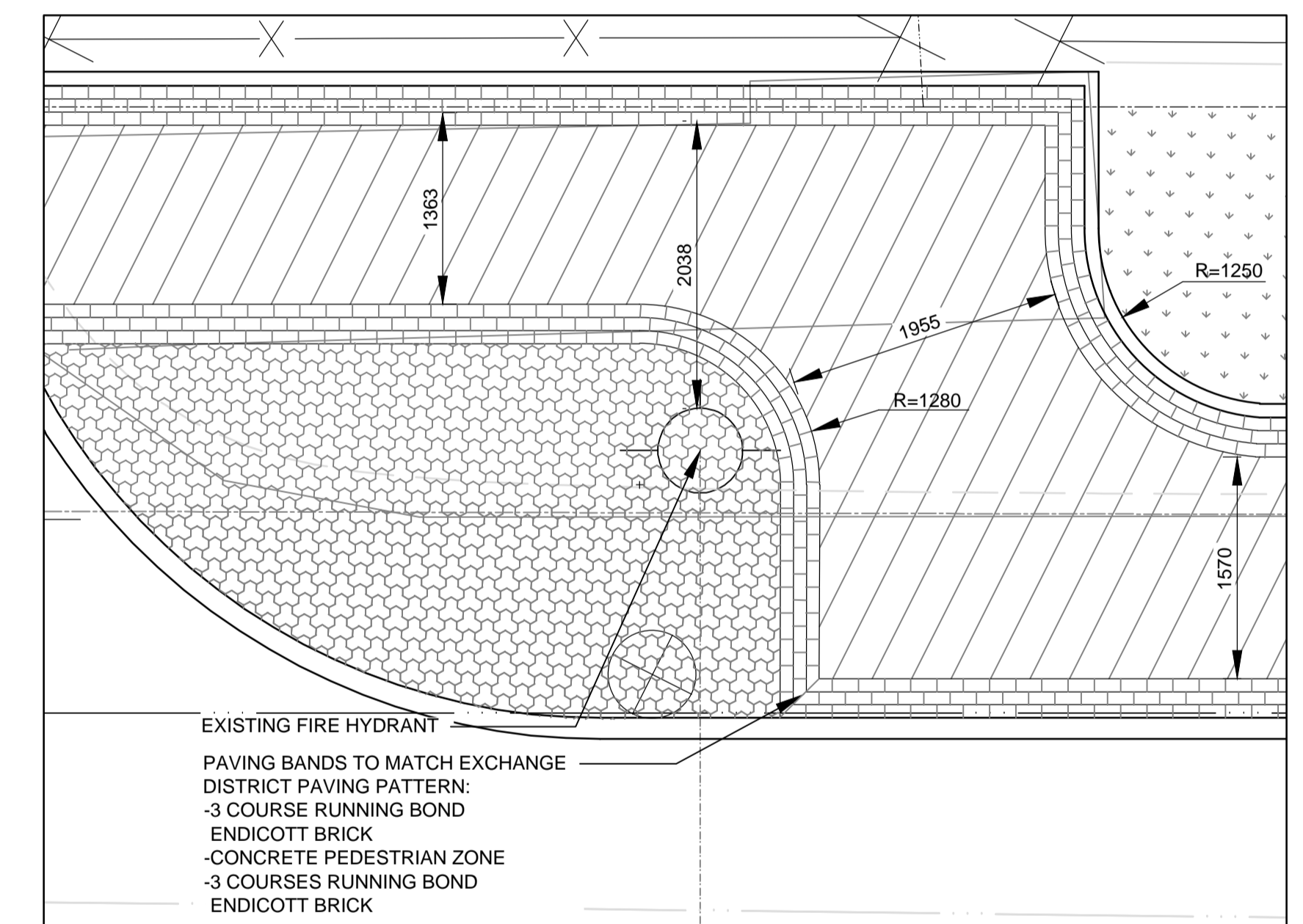
ENLARGEMENT 2



ENLARGEMENT 3



ENLARGEMENT 4



ENLARGEMENT 5

GENERAL NOTES

- REFER TO ENGINEER'S DRAWINGS FOR ALL GRADE INFORMATION.
- ALL DIMENSIONS SHOWN IN METRIC UNITS. NUMBERS WITH DECIMALS INDICATE METERS. WHOLE NUMBERS INDICATE MILLIMETERS.
- ALL UTILITIES ARE SHOWN AS INFORMATION ONLY. CONTRACTOR TO CONFIRM LOCATION OF ALL UTILITIES ON SITE PRIOR TO CONSTRUCTION.
- THE CONTRACTOR SHALL PROVIDE A QUALIFIED CREW TO LAYOUT STREETSCAPING ELEMENTS. THE CREW SHALL BE EQUIPPED WITH ALL THE NECESSARY EQUIPMENT TO PROVIDE HORIZONTAL AND VERTICAL LAYOUT IN ACCORDANCE WITH THE PLANS AND SPECIFICATIONS.
- CONTRACTOR TO STAKE LOCATION OF STITTSVILLE LIGHT STANDARDS ON SITE FOR REVIEW AND APPROVAL BY MANITOBA HYDRO.
- CONTRACTOR TO INSTALL CONCRETE FOUNDATIONS (INCLUDING CONDUIT) FOR STITTSVILLE LIGHT STANDARDS USING DETAIL PROVIDED BY STRUCTURAL ENGINEER. REFER TO DETAIL ON ENGINEER'S DRAWINGS.
- MANITOBA HYDRO TO INSTALL CONDUIT, WIRING AND POWER REQUIREMENTS FOR STITTSVILLE LIGHT STANDARDS. CONDUIT AND WIRING TO BE INSTALLED FOLLOWING EXCAVATION AND REMOVALS WORK BY CONTRACTOR AND PRIOR TO PAVING WORKS BY CONTRACTOR. CONTRACTOR TO COORDINATE WITH MANITOBA HYDRO, PATRICK WACH, 992-7530
- STITTSVILLE LIGHT STANDARDS WITH COMPACT FLUORESCENT LUMINAIRE TO BE SUPPLIED BY CITY OF WINNIPEG (127 PACIFIC AVE.) AND INSTALLED BY MANITOBA HYDRO.
- CONTRACTOR TO STAKE OUT LOCATION OF ALL WORKS FOR APPROVAL BY CONTRACT ADMINISTRATOR PRIOR TO ANY CONSTRUCTION OR REMOVALS.
- CONTRACTOR TO CONFIRM ALL DIMENSIONS ON SITE AND REPORT ANY DISCREPANCIES TO THE CONTRACT ADMINISTRATOR PRIOR TO CONSTRUCTION.
- DURING CONSTRUCTION, CONTRACTOR TO PROTECT TO CITY OF WINNIPEG STANDARDS ALL EXISTING TREES, SIDEWALKS, CURBS, SOD, UTILITIES, AND PAVING TO REMAIN. AREAS DAMAGED DURING CONSTRUCTION TO BE REPAIRED TO CITY OF WINNIPEG STANDARDS AT CONTRACTOR'S COST.
- CONTRACTOR IS RESPONSIBLE FOR ALL REMOVALS AS REQUIRED TO CONSTRUCT ALL WORKS AS SHOWN ON PLANS AND DETAILS. ALL ITEMS TO BE REMOVED MUST BE DISPOSED OF LEGALLY OFF SITE. ALL REUSABLE PAVING STONE TO BE STOCKPILED FOR REINSTALLATION. DISPOSE OF EXCESS AND UNSUITABLE MATERIAL.
- CONTRACTOR TO SUPPLY AND INSTALL SQUARE CONCRETE COLLARS FOR ALL SURFACE UTILITIES IN SIDEWALK. WHERE COLLAR EXTENDS INTO PAVING BANDS CONTRACTOR TO ENSURE CONCRETE EXTENDS TO NEAREST LINE OF PAVER OR BRICK.
- CONTRACTOR TO REPAIR ALL ON AND OFF SITE SODDED AREAS, SHRUB BEDS, TREES, CONCRETE, ROAD PAVING AND CURBS ETC., DAMAGED DURING CONSTRUCTION TO CONTRACT ADMINISTRATOR'S SATISFACTION AND TO THE CITY OF WINNIPEG STANDARDS AT HIS/HER OWN COST.
- ALL WORK TO BE DONE IN ACCORDANCE WITH CITY OF WINNIPEG STANDARD CONSTRUCTION SPECIFICATIONS UNLESS OTHERWISE NOTED.
- REFER ALSO TO WRITTEN SPECIFICATIONS.
- CONSTRUCTION ACCESS TO BE LIMITED TO THE ROUTES SPECIFIED ON SITE BY CONTRACT ADMINISTRATOR.
- CONTRACTOR TO ADJUST GRADES OF ALL SERVICES WITHIN LIMIT OF WORK AS REQUIRED INCLUDING ALL MANHOLES, CATCH BASINS, FIRE HYDRANT, CURB STOPS, ETC
- REMOVAL OF STREET SIGNAGE BY TRAFFIC SERVICES AS REQUIRED. CONTRACTOR TO INSTALL SIGN POST CLAMPS SUPPLIED BY TRAFFIC SERVICES IN LOCATIONS INDICATED BY TRAFFIC SERVICES. CONTACT: GREG SKINNER 794-4294

WARNING

IF POWER EQUIPMENT OR EXPLOSIVES ARE TO BE USED FOR EXCAVATION ON THIS PROJECT THE CONTRACTOR MUST:
 1) NOTIFY THE GAS COMPANY OF THE PROPOSED LOCATION OF EXCAVATION.
 2) TAKE PRECAUTION TO AVOID DAMAGE TO GAS COMPANY INSTALLATIONS.
 SEE PROVINCIAL REGULATION 140/92 FOR DETAILS

APEGM
 Certificate of Authorization
 Stantec Consulting Ltd.
 No. 1301 Date: _____



150 WM	WATERMAIN	150 WM	HYDRO	150 WM	WATERMAIN	150 WM
+	HYDRANT	+	M.T.S.	+	HYDRANT, VALVE	+
o	VALVE	o	CONCRETE	o	LAND DRAINAGE SEWER	o
---	300 LBS LAND DRAINAGE SEWER	---	SOD	---	WASTE WATER SEWER	---
---	250 WWS WASTE WATER SEWER	---	SIDEWALK	---	PROPERTY LINE	---
o	MANHOLE	o	PROPERTY LINE	o	SURVEY BAR	o
o	CATCH BASIN	o	DITCH	o	NORTH OR WEST GUTTER	o
o	CURB INLET	o	ELEVATION	o	SOUTH OR EAST GUTTER	o
o	JUNCTIONS	o	SIDEWALK RAMP	o	NORTH OR WEST P	o
o	CULVERT	o	EXISTING	o	SOUTH OR EAST P	o
o	GAS	o	PROPOSED	o	NORTH OR WEST DITCH	o
o	EXISTING	o	PROPOSED	o	SOUTH OR EAST DITCH	o

LOCATION APPROVED UNDERGROUND STRUCTURES

SUPV. U/G STRUCTURES COMMITTEE DATE

NOTE:
 LOCATION OF UNDERGROUND STRUCTURES AS SHOWN ARE BASED ON THE BEST INFORMATION AVAILABLE BUT NO GUARANTEE IS GIVEN THAT ALL EXISTING UTILITIES ARE SHOWN OR THAT THE GIVEN LOCATIONS ARE EXACT. CONFIRMATION OF EXISTENCE AND EXACT LOCATION OF ALL SERVICES MUST BE OBTAINED FROM THE INDIVIDUAL UTILITIES BEFORE PROCEEDING WITH CONSTRUCTION.

B.M. ELEV.

NO.	ISSUE FOR TENDER	DATE	BY
0	ISSUE FOR TENDER	10.08.19	MRG

Stantec Consulting Ltd.
 905 Waverley Street, Winnipeg, Manitoba
 Tel 204-489-5900 Fax 204-453-9012

DESIGNED BY MD/SR CHECKED BY JW/SR
 DRAWN BY MD/JW APPROVED BY SR
 HOR. SCALE: 1:300
 VERTICAL: N/A
 RELEASED FOR CONSTRUCTION: _____
 DATE: 10.07.19

ENGINEER'S SEAL
 SUSAN RUSSELL
 member no. 71

THE CITY OF WINNIPEG
 PUBLIC WORKS DEPARTMENT
 ENGINEERING DIVISION

BANNATYNE / MCDERMOT
 RORIE STREET TO WATERFRONT DRIVE
 MATCHLINE B-B TO SHIP ST & ENLARGEMENTS
 BIKE BOULEVARD

SHEET 4 OF 5
 CAD FILE DRAWING NUMBER 05400c-202-xxx.dwg
 CITY DRAWING NUMBER W-380-04