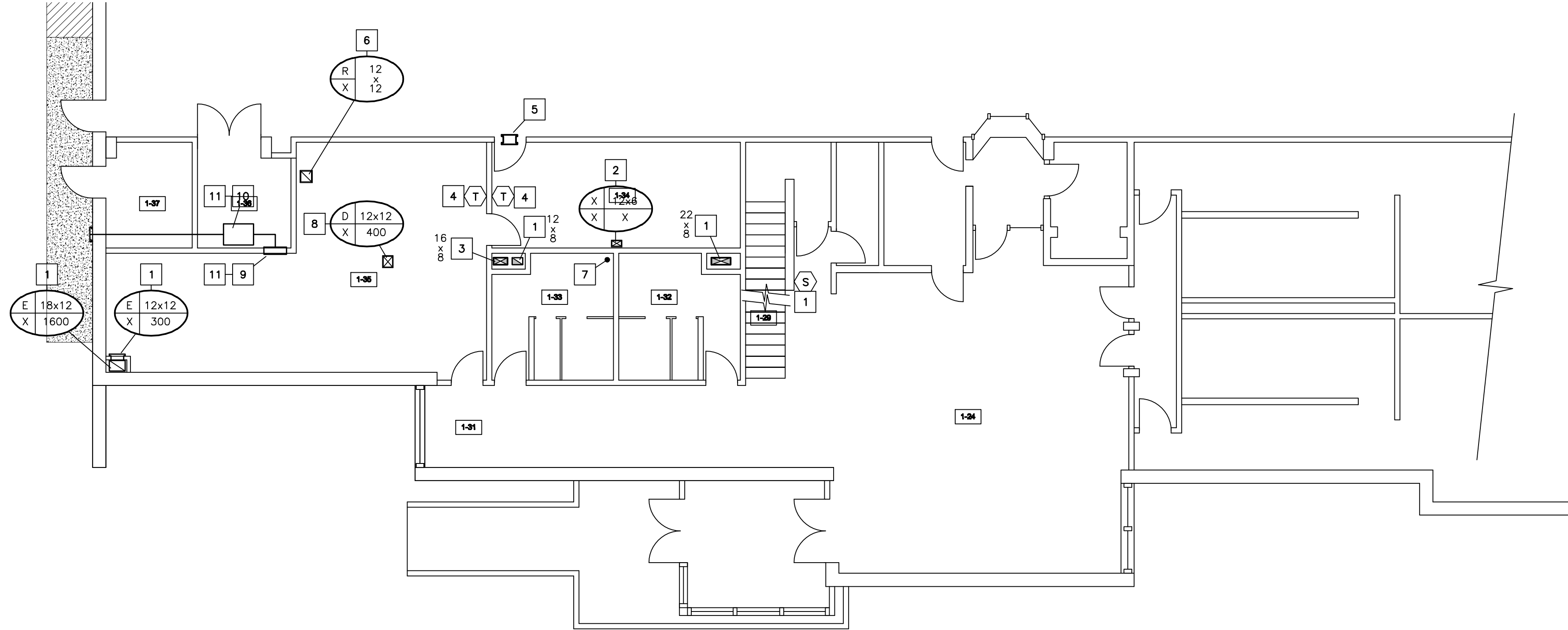


MEZZANINE PART PLAN - EXISTING DEMOLITION
SCALE: 1/8" = 1'-0"

SUPPLEMENTARY NOTES - MEZZANINE EXISTING DEMO

1. Existing reheat coil removed completely.
2. Last 3 feet of room wall to be removed by City.
3. Existing exhaust fan.
4. Remove existing ductwork back to existing exhaust fan. See New Work for new ductwork layout.
5. Prepare for new ductwork connection c/w flex connection.
6. Existing louver to remain as is.
7. Existing unit heater to be relocated. See Electrical.
8. Note: Electrical to be relocated.
9. Existing to remain as is.
10. Coil to remain as is.
11. Existing louver to remain. Patch existing. From interior with weatherproof insulated panel. See New Work for new louver location.
12. Remove below floor line and patch (concrete). Cap existing ductwork.
13. Remove completely. Existing opening to be modified and reused as part of new work.
14. Approximate location of washrooms below. Note new cooling coil drip drain required as part of new supply fan. See New Work.
15. Existing run-out removed. Floor to be patched and painted both sides.



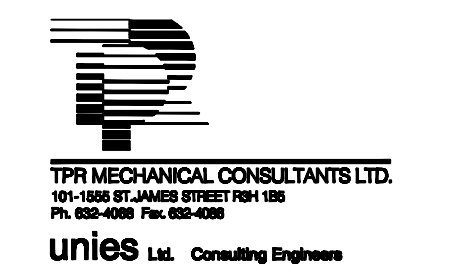
MAIN FLOOR PART PLAN - EXISTING DEMOLITION
SCALE: 1/8" = 1'-0"

SUPPLEMENTARY NOTES - MAIN FLOOR EXISTING/DEMO

1. Existing to remain as is.
2. Remove existing grille. Opening to be reused as part of new work. Modify opening and patch.
3. Cap ductwork riser to Mezzanine Floor. Patch (concrete) and paint.
4. Removed c/w all associated devices back to source.
5. Remove existing door grille to the treadmill side. Paint. Door to be patched (metal) to the treadmill side.
6. Maintain opening to mezzanine level. Existing grille reused.
7. See New Work. Provide drain connection for new cooling coil drip. Note open wall and patch as per existing.
8. Patch ceiling/ mezzanine floor and paint.
9. Remove existing wall air conditioning unit. Patch wall with drywall. Paint entire wall.
10. Mechanical to carry cost to remove fan. Remove existing piping to outdoors and seal with weatherproof patch to existing side of louver. Patch and paint each wall penetration.
11. Electrical to remove all wiring back to feed.

MECHANICAL LEGEND

	REFRIGERATION (LIQUID/SUCTION)
	EQUIPMENT/FAN DESIGNATION IDENTIFICATION NUMBER
	EXHAUST GRILLE DESIGNATION SIZE CFM TYPE ("A" DENOTES FIRE DAMPER)
	SUPPLY GRILLE DESIGNATION SIZE CFM TYPE ("A" DENOTES FIRE DAMPER)
	ACCESS DOOR
	MOTORIZED DAMPER (MD)
	BALANCING DAMPER
	BACKDRAFT DAMPER
	SUPPLY AIR DIFFUSER (GRILLE)
	RETURN AIR/ EXHAUST AIR (REGISTER)
	ACOUSTIC LINING



R 1	FOR TENDER	BP/RP 23 AUG 2010
R 0	FOR REVIEW	BP/RP 27 JULY 2010
NO.	REVISION/DESCRIPTION	BY DATE



DRAWN BY: NNL/P CHECKED BY: BP/RS APPROVED: BP/RS
DATE: 23 AUG 2010 USER APPROVAL

THE CITY OF WINNIPEG
CIVIC BUILDINGS DEPARTMENT
4TH FLR.-185 KING ST. R3B 1J1

PROJECT
BID OPPORTUNITY 596-2010
Upgrade Air Conditioning System - Exercise Room
909 CONCORDIA AVENUE
Winnipeg, Mb.

SHEET TITLE
MAIN FLOOR AND MEZZANINE MECHANICAL PART PLANS EXISTING DEMOLITION