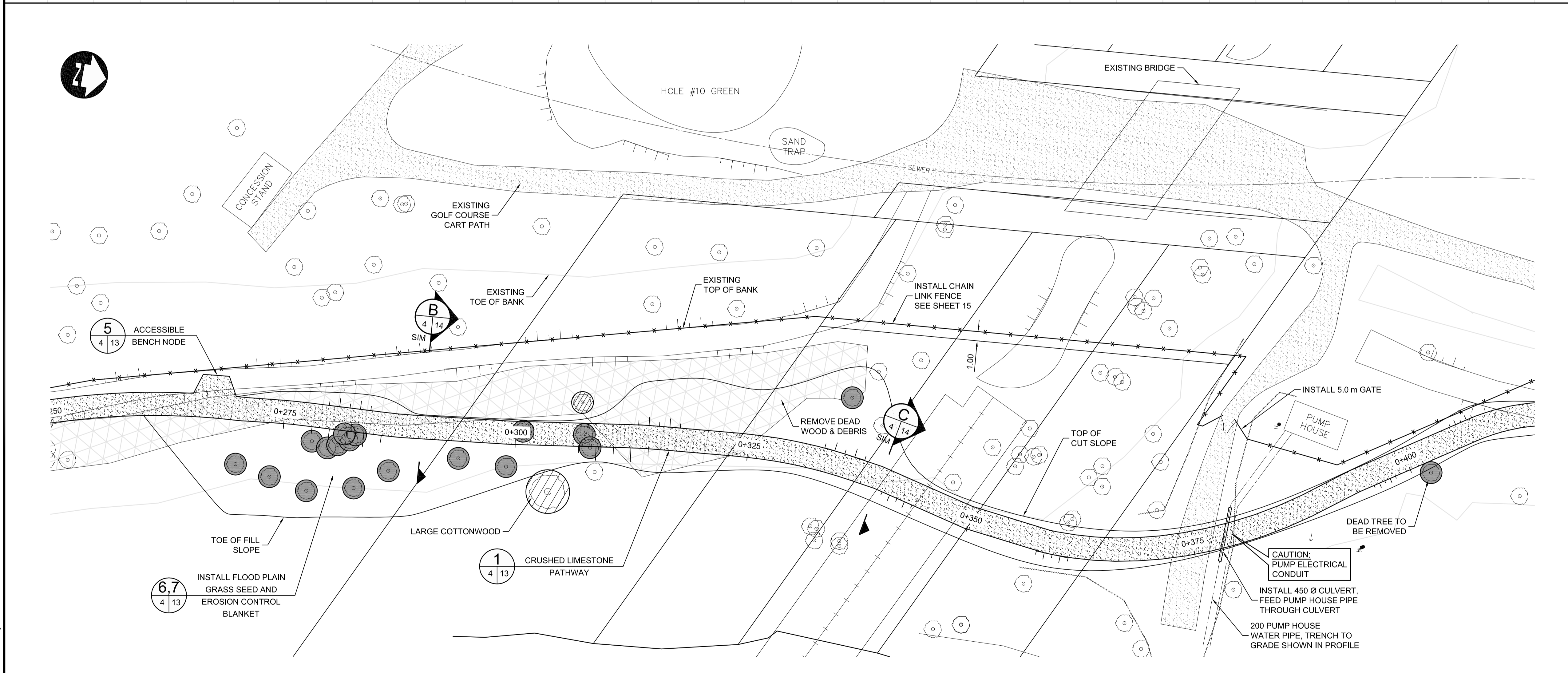


- CONSTRUCTION NOTES FOR PATHWAY:**
- STATIONING ALONG EAST EDGE OF PROPOSED GOLF COURSE PATHWAY.
  - STATIONING ALONG NORTH EDGE OF SOUTH CHIEF PEGUIS PATHWAY.
  - STATIONING ALONG SOUTH EDGE OF NORTH CHIEF PEGUIS PATHWAY.
  - STATIONING ALONG EAST EDGE OF NORTH CHIEF PEGUIS PATHWAY TO JOHN BLACK AVENUE.
  - LEGAL PLAN AND UNDERGROUND INFORMATION FROM CITY OF WINNIPEG LBIS.
  - CONTRACTOR TO TAKE PRECAUTIONARY STEPS TO AVOID DAMAGE FROM CONSTRUCTION ACTIVITIES TO TREES WITHIN THE LIMITS OF CONSTRUCTION.
  - LOCATION OF EXISTING SERVICES TO BE CONFIRMED IN THE FIELD BY THE CONTRACTOR.
  - LIMITS OF PATHWAY EARTH WORK TO BE FINALIZED IN THE FIELD BY THE CONTRACT ADMINISTRATOR.
  - PATHWAY TO HAVE MAX CROSS SLOPE OF 2% AND MAX LONGITUDINAL SLOPE OF 5%.
  - ENVIROGRID STRUCTURE TO BE USED WHERE CONSTRUCTION OF FULL DEPTH PATH STRUCTURE WOULD DAMAGE ROOTS OF NEARBY TREES. APPROX. 200 LINEAL METRES OF ENVIROGRID WILL BE USED BETWEEN STA: 0+400 TO STA: 0+805. LIMITS OF ENVIROGRID STRUCTURE TO BE FINALIZED IN THE FIELD BY THE CONTRACT ADMINISTRATOR.
  - LOCATION AND INVERTS OF CULVERTS TO BE FINALIZED IN THE FIELD BY THE CONTRACT ADMINISTRATOR.
  - LOCATION OF ACCESSIBLE BENCH NODES TO BE FINALIZED IN THE FIELD BY THE CONTRACT ADMINISTRATOR.
  - CONTRACTOR TO CLEAR AND GRUB BETWEEN LIMITS OF THE TOP OF CUT SLOPE AND TOE OF FILL SLOPE EXCEPT FOR TREES MARKED BY THE CONTRACT ADMINISTRATOR.



**TREE WORKS LEGEND**

- TREES TO BE REMOVED
- TREES TO BE PRUNED
- DEADWOOD AND DEBRIS TO BE DISPOSED OF

NOTE:  
NEW TREE PLACEMENT, TREE REMOVAL AND PRUNING TO BE FINALIZED IN THE FIELD BY THE CONTRACT ADMINISTRATOR.

**METRIC**  
WHOLE NUMBERS INDICATE MILLIMETRES  
DECIMALIZED NUMBERS INDICATE METRES

**WARNING**  
IF POWER EQUIPMENT OR EXPLOSIVES ARE TO BE USED FOR EXCAVATION ON THIS PROJECT THE CONTRACTOR MUST:

- NOTIFY THE GAS COMPANY OF THE PROPOSED LOCATION OF EXCAVATION.
- TAKE PRECAUTION TO AVOID DAMAGE TO GAS COMPANY INSTALLATIONS SEE PROVINCIAL REGULATION 210/72 FOR DETAILS.

**APEGM**  
Certificate of Authorization  
**Dillon Consulting Limited (MB)**  
No. 1789 Date: 08/17/2010

150 WM	WATERMAIN	150 WM	HYDRO	HYDRO	HYDRO	150 mm W.M.	WATERMAIN	150 mm W.M.
	HYDRANT VALVE		MTS	MTS	MTS		HYDRANT VALVE	
	LAND DRAINAGE SEWER						WASTE WATER SEWER	
	MANHOLE						SIDEWALK	
	CATCH BASIN						SURVEY BAR	
	JUNCTIONS						EXISTING	
	GAS						EXISTING	
	LEGEND-PLAN						LEGEND-PROFILE	

**UNDERGROUND STRUCTURES**

DATE: \_\_\_\_\_

NOTE:  
LOCATION OF UNDERGROUND STRUCTURES AS SHOWN ARE BASED ON THE BEST INFORMATION AVAILABLE, BUT NO GUARANTEE IS GIVEN THAT ALL EXISTING UTILITIES ARE SHOWN OR THAT THE GIVEN LOCATIONS ARE EXACT. CONFIRMATION OF EXISTENCE AND EXACT LOCATION OF ALL SERVICES MUST BE OBTAINED FROM THE INDIVIDUAL UTILITIES BEFORE PROCEEDING WITH CONSTRUCTION.

NO.	REVISIONS	DATE	BY
2	ISSUED FOR TENDER	08/17/10	DBW
1	ISSUED FOR 90% REVIEW	07/23/10	DBW

DESIGNED BY	SPC/RTP
DRAWN BY	TJH
CHECKED BY	DBW
APPROVED BY	-
HOR. SCALE	1 : 250
VERTICAL	1 : 25
RELEASED FOR CONSTRUCTION	DATE: _____

ENGINEER'S SEAL  
PROVINCE OF MANITOBA  
ORIGINAL REGISTERED BY  
**D.B. WIEBE**  
08/17/10  
Member 22480  
REGISTERED PROFESSIONAL ENGINEER

CONSULTANT PROJECT NUMBER  
**09-2692**

**THE CITY OF WINNIPEG**  
PUBLIC WORKS DEPARTMENT

2010 ACTIVE TRANSPORTATION INFRASTRUCTURE STIMULUS PROGRAM - KILDONAN PARK GOLF COURSE PATHWAY

KILDONAN PARK GOLF COURSE PATHWAY (2 OF 5)

CITY DRAWING NUMBER: W-382-04  
SHEET 04 OF 15  
CONSULTANT DRAWING NUMBER

G:\CAD\092692\Contract\ATP-GOLF-COURSE.dwg