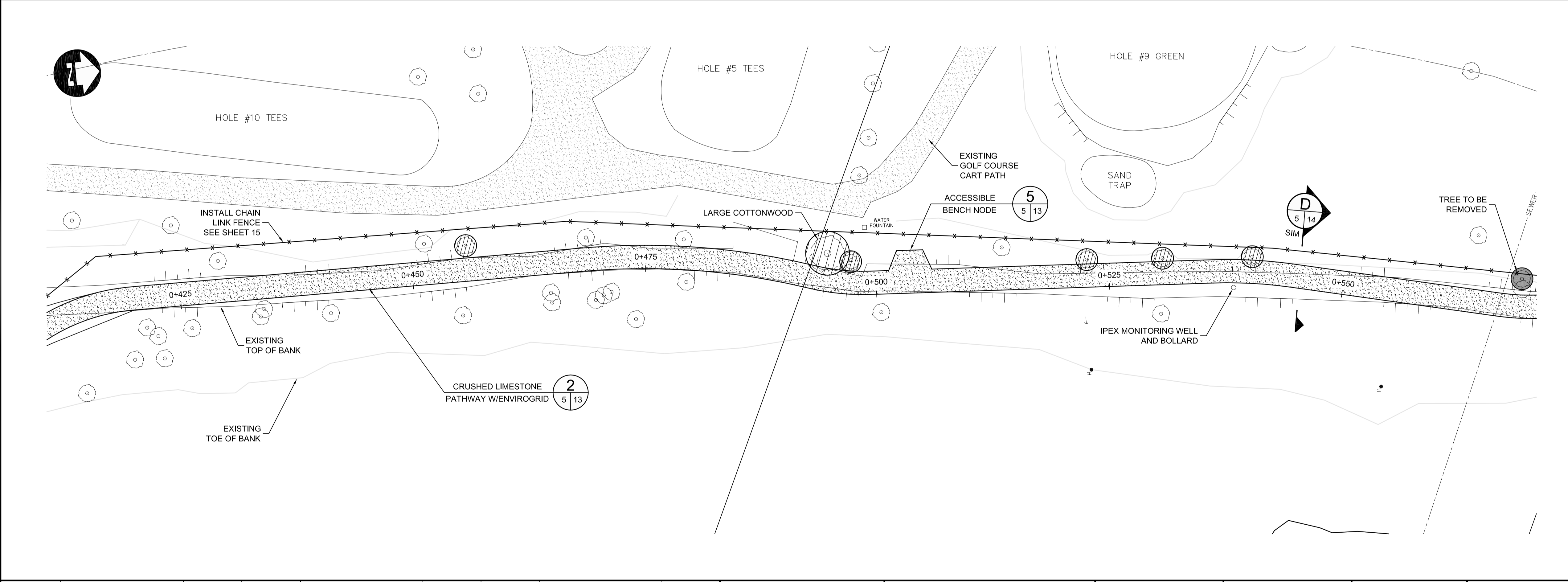


- CONSTRUCTION NOTES FOR PATHWAY:**
1. STATIONING ALONG EAST EDGE OF PROPOSED GOLF COURSE PATHWAY.
 2. STATIONING ALONG NORTH EDGE OF SOUTH CHIEF PEGUIS PATHWAY.
 3. STATIONING ALONG SOUTH EDGE OF NORTH CHIEF PEGUIS PATHWAY.
 4. STATIONING ALONG EAST EDGE OF NORTH CHIEF PEGUIS PATHWAY TO JOHN BLACK AVENUE.
 5. LEGAL PLAN AND UNDERGROUND INFORMATION FROM CITY OF WINNIPEG LBIS.
 6. CONTRACTOR TO TAKE PRECAUTIONARY STEPS TO AVOID DAMAGE FROM CONSTRUCTION ACTIVITIES TO TREES WITHIN THE LIMITS OF CONSTRUCTION.
 7. LOCATION OF EXISTING SERVICES TO BE CONFIRMED IN THE FIELD BY THE CONTRACTOR.
 8. LIMITS OF PATHWAY EARTH WORK TO BE FINALIZED IN THE FIELD BY THE CONTRACT ADMINISTRATOR.
 9. PATHWAY TO HAVE MAX CROSS SLOPE OF 2% AND MAX LONGITUDINAL SLOPE OF 5%.
 10. ENVIROGRID STRUCTURE TO BE USED WHERE CONSTRUCTION OF FULL DEPTH PATH STRUCTURE WOULD DAMAGE ROOTS OF NEARBY TREES. APPROX. 200 LINEAL METRES OF ENVIROGRID WILL BE USED BETWEEN STA: 0+400 TO STA: 0+805. LIMITS OF ENVIROGRID STRUCTURE TO BE FINALIZED IN THE FIELD BY THE CONTRACT ADMINISTRATOR.
 11. LOCATION AND INVERTS OF CULVERTS TO BE FINALIZED IN THE FIELD BY THE CONTRACT ADMINISTRATOR.
 12. LOCATION OF ACCESSIBLE BENCH NODES TO BE FINALIZED IN THE FIELD BY THE CONTRACT ADMINISTRATOR.
 13. CONTRACTOR TO CLEAR AND GRUB BETWEEN LIMITS OF THE TOP OF CUT SLOPE AND TOE OF FILL SLOPE EXCEPT FOR TREES MARKED BY THE CONTRACT ADMINISTRATOR.



TREE WORKS LEGEND

- TREES TO BE REMOVED
- TREES TO BE PRUNED
- ⊠ DEADWOOD AND DEBRIS TO BE DISPOSED OF

NOTE:
NEW TREE PLACEMENT, TREE REMOVAL AND PRUNING TO BE FINALIZED IN THE FIELD BY THE CONTRACT ADMINISTRATOR.

METRIC
WHOLE NUMBERS INDICATE MILLIMETRES
DECIMAL NUMBERS INDICATE METRES

WARNING
IF POWER EQUIPMENT OR EXPLOSIVES ARE TO BE USED FOR EXCAVATION ON THIS PROJECT THE CONTRACTOR MUST:

1. NOTIFY THE GAS COMPANY OF THE PROPOSED LOCATION OF EXCAVATION.
2. TAKE PRECAUTION TO AVOID DAMAGE TO GAS COMPANY INSTALLATIONS SEE PROVINCIAL REGULATION 210/72 FOR DETAILS.

APEGM
Certificate of Authorization
Dillon Consulting Limited (MB)
No. 1789 Date: 08/17/2010

150 WM	WATERMAIN	150 WM	HYDRO	HYDRO	HYDRO	150 mm W.M.	WATERMAIN	150 mm W.M.
⊕	HYDRANT	⊕	MTS	MTS	MTS	+	HYDRANT	+
⊗	VALVE	⊗				×	VALVE	×
300 LDS	LAND DRAINAGE SEWER	300 LDS				300 mm L.D.S.	LAND DRAINAGE SEWER	300 mm L.D.S.
250 WWS	WASTE WATER SEWER	250 WWS				250 mm W.W.S.	WASTE WATER SEWER	250 mm W.W.S.
○	MANHOLE	●				— · — · —	PROFILE	— · — · —
□	CATCH BASIN	■				— — — — —	NORTH/WEST GUTTER	— — — — —
▽	CURB INLET	▽				— — — — —	SOUTH/EAST GUTTER	— — — — —
— — — — —	JUNCTIONS	— — — — —				— — — — —	NORTH/WEST T/LANE	— — — — —
— — — — —	CULVERT	— — — — —				— — — — —	SOUTH/EAST T/LANE	— — — — —
100 GAS	GAS	100 GAS				— — — — —		— — — — —
EXISTING	LEGEND—PLAN	PROPOSED	EXISTING	LEGEND—PLAN	PROPOSED	EXISTING	LEGEND—PROFILE	PROPOSED

UNDERGROUND STRUCTURES

SUPPLY, U/G STRUCTURES COMMITTEE DATE

NOTE:
LOCATION OF UNDERGROUND STRUCTURES AS SHOWN ARE BASED ON THE BEST INFORMATION AVAILABLE, BUT NO GUARANTEE IS GIVEN THAT ALL EXISTING UTILITIES ARE SHOWN OR THAT THE GIVEN LOCATIONS ARE EXACT. CONFIRMATION OF EXISTENCE AND EXACT LOCATION OF ALL SERVICES MUST BE OBTAINED FROM THE INDIVIDUAL UTILITIES BEFORE PROCEEDING WITH CONSTRUCTION.

B.M. ELEV.			
DESIGNED BY	SPC/RTP		
DRAWN BY	TJH		
CHECKED BY	DBW		
APPROVED BY			
HOR. SCALE	1 : 250		
VERTICAL	1 : 25		
NO.	REVISIONS	DATE	BY
2	ISSUED FOR TENDER	08/17/10	DBW
1	ISSUED FOR 90% REVIEW	07/23/10	DBW

DILLON CONSULTING

DESIGNED BY: SPC/RTP
DRAWN BY: TJH
CHECKED BY: DBW
APPROVED BY: —

HOR. SCALE: 1 : 250
VERTICAL: 1 : 25

RELEASED FOR CONSTRUCTION

DATE: _____

ENGINEER'S SEAL

PROVINCE OF MANITOBA
REGISTERED PROFESSIONAL ENGINEER
D.B. WIEBE
08/17/10
Member 22480

CONSULTANT PROJECT NUMBER
09-2692

THE CITY OF WINNIPEG
PUBLIC WORKS DEPARTMENT

2010 ACTIVE TRANSPORTATION INFRASTRUCTURE STIMULUS PROGRAM - KILDONAN PARK GOLF COURSE PATHWAY

KILDONAN PARK GOLF COURSE PATHWAY (3 OF 5)

CITY DRAWING NUMBER: W-382-05
SHEET 05 OF 15
CONSULTANT DRAWING NUMBER: _____

G:\CAD\092692\Contract\ATP-GOLF-COURSE.dwg