

PROJECT No: 2008-059-03 ADDRESS: 185 KING STREET DESCRIPTION: MILLWORK ELEV. & SECT., DOOR & ROOM FINISH SCHEDULES & DETAILS DATE: 2009.12.14 FILE NAME: 2008059010.dwg/A5.2

ROOM FINISH SCHEDULE										
ROOM NO.	ROOM NAME	FLOOR	BASEBOARD	NORTH WALL	SOUTH WALL	EAST WALL	WEST WALL	CEILING	CEILING HEIGHT	NOTES
247	OFFICE		CARPET #1	PT.	PT.	PT.	PT.	EXISTING	8'-6"	SEE TYPICAL CARPET BASE DETAIL
248	OFFICE			PT.	PT.	PT.	PT.			
249	OFFICE			PT.	PT.	PT.	PT.			
250	OFFICE			PT.	PT.	PT.	PT.			
251	STORAGE			PT.	PT.	PT.	PT.			
252	OFFICE			PT.	PT.	PT.	PT.			
253	OFFICE			PT.	PT.	PT.	PT.			
254	OFFICE			PT.	PT.	PT.	PT.			
255	GENERAL OFFICE			PT.	PT.	PT.	PT.			
256	OFFICE			PT.	PT.	PT.	PT.			
257	OFFICE			PT.	PT.	PT.	PT.			
258	PLANNING ROOM			PT.	PT.	PT.	PT.			
259	OFFICE			PT.	PT.	PT.	PT.			
260	COPY FAX			PT.	PT.	PT.	PT.			
261	OFFICE			PT.	PT.	PT.	PT.			
262	BOARDROOM			PT.	PT.	PT.	PT.	NEW TILE-SEE REFL. CLNG. PLAN		NEW GYPSUM BOARD BULKHEAD-SEE REFL. CLNG.
263A	CORRIDOR		TILE #1	PT.	PT.	PT.	PT.	EXISTING		NEW GYPSUM BOARD BULKHEAD-SEE REFL. CLNG.
263B	CORRIDOR		CARPET #1	PT.	PT.	PT.	PT.			SEE TYPICAL CARPET BASE DETAIL
263C	CORRIDOR		CARPET #1	PT.	PT.	PT.	PT.			SEE TYPICAL CARPET BASE DETAIL
266	CORRIDOR (SHOWERS)		EXISTING	PT.	PT.	PT.	PT.		8'-0"	ALL FINISHES APPLY TO BOTH ROOMS (SEE NOTE 11)
267	CORRIDOR (SHOWERS)		EXISTING	PT.	PT.	PT.	PT.		8'-0"	ALL FINISHES APPLY TO BOTH ROOMS (SEE NOTE 11)
220	CORRIDOR		EXISTING	PT.	PT.	PT.	PT.		8'-6"	SEE NOTE 8

ABBREVIATIONS PT.-PAINT RB.BB.-RUBBER BASEBOARD CARPET #1, TILE #1, RB. BB. #1 & #2-SEE LEGEND ON DRAWING A4.2

DOOR SCHEDULE											
DOOR NO.	DOOR				FRAME			RATING	HARDWARE CODE		
	TYPE	WIDTH	HEIGHT	THICK.	MATL.	FINISH	TYPE				
D232B	---	---	---	---	---	---	---	---	---	---	---
D233B	---	---	---	---	---	---	---	---	---	---	---
D247	---	---	---	---	---	---	---	---	---	---	---
D248	A	3'-2"	7'-0"	1 3/4"	S.C.W.D.	NAT.	D	WD.	NAT.	GROUP #4	SEE NOTE #5
D250	A	3'-2"	7'-0"	1 3/4"	S.C.W.D.	NAT.	E	WD.	NAT.	GROUP #4	SEE NOTE #5
D251	A	3'-2"	7'-0"	1 3/4"	S.C.W.D.	NAT.	B	WD.	NAT.	GROUP #4	SEE NOTE #5
D252	---	---	---	---	---	---	---	---	---	---	---
D253	A	3'-2"	7'-0"	1 3/4"	S.C.W.D.	NAT.	D	WD.	NAT.	GROUP #4	SEE NOTE #5
D254	A	3'-2"	7'-0"	1 3/4"	S.C.W.D.	NAT.	D	WD.	NAT.	GROUP #4	SEE NOTE #5
D256	---	---	---	---	---	---	---	---	---	---	---
D257A	---	---	---	---	---	---	---	---	---	---	---
D257B	C	(2) 2'-4"	6'-8"	1 3/8"	H.C.W.D.	NAT.	C	WD.	NAT.	GROUP #7	SEE NOTE #10
D258A	---	---	---	---	---	---	---	---	---	---	---
D258B	A	3'-2"	7'-0"	1 3/4"	S.C.W.D.	NAT.	B	WD.	NAT.	GROUP #4	SEE NOTE #5
D259	---	---	---	---	---	---	---	---	---	---	---
D261	---	---	---	---	---	---	---	---	---	---	---
D262A	---	---	---	---	---	---	---	---	---	---	---
D262B	---	---	---	---	---	---	---	---	---	---	---
D263A	---	---	---	---	---	---	---	---	---	---	---
D266A	B	3'-2"	7'-0"	1 3/4"	H.M.	PT.	A	P.S.	PT.	GROUP #5	SEE NOTE #5
D266B	B	3'-0"	7'-0"	1 3/4"	H.M.	PT.	A	P.S.	PT.	GROUP #3	SEE NOTE #8
D267A	B	3'-2"	7'-0"	1 3/4"	H.M.	PT.	A	P.S.	PT.	GROUP #5	SEE NOTE #5
D267B	B	3'-0"	7'-0"	1 3/4"	H.M.	PT.	A	P.S.	PT.	GROUP #3	SEE NOTE #8

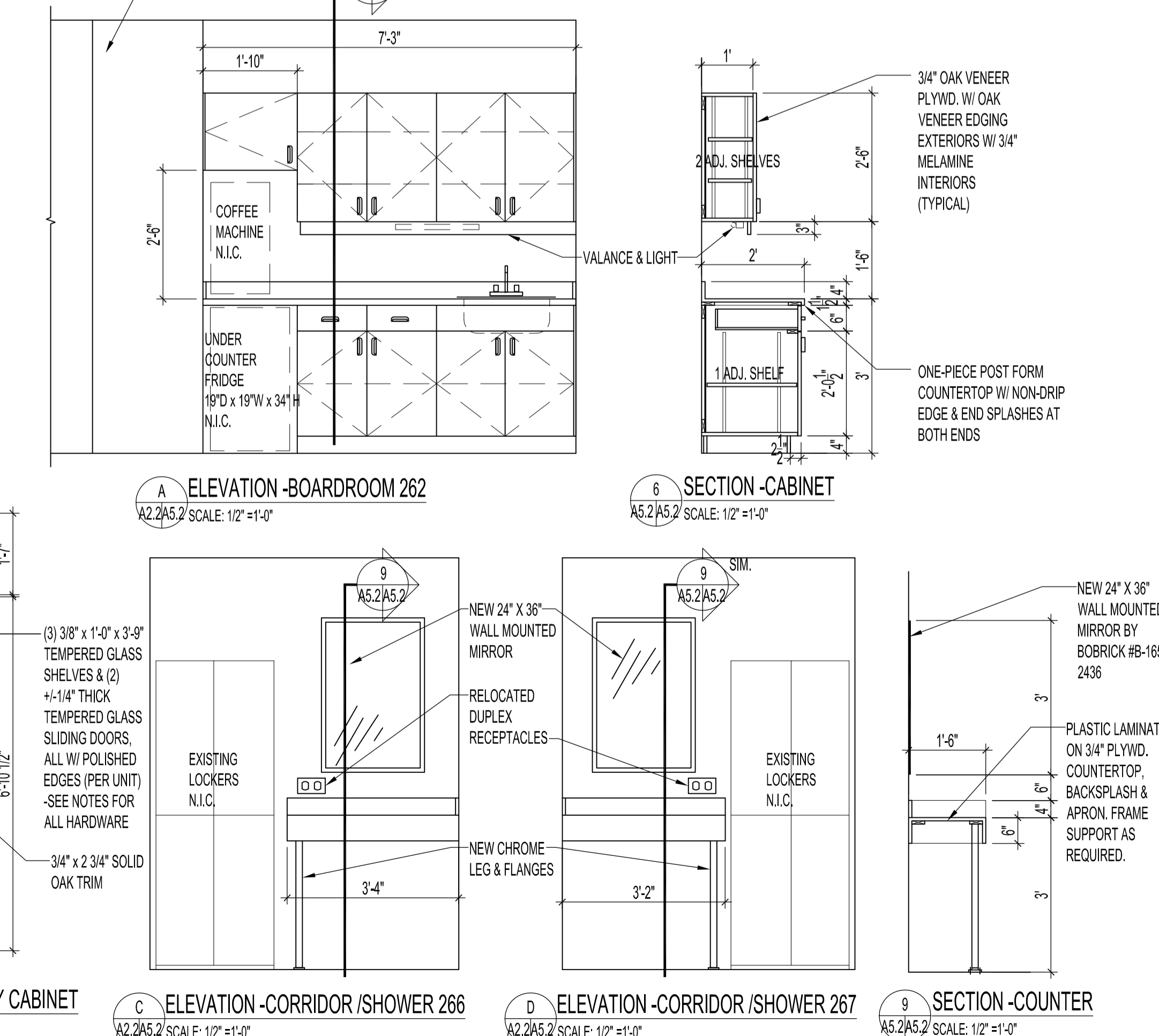
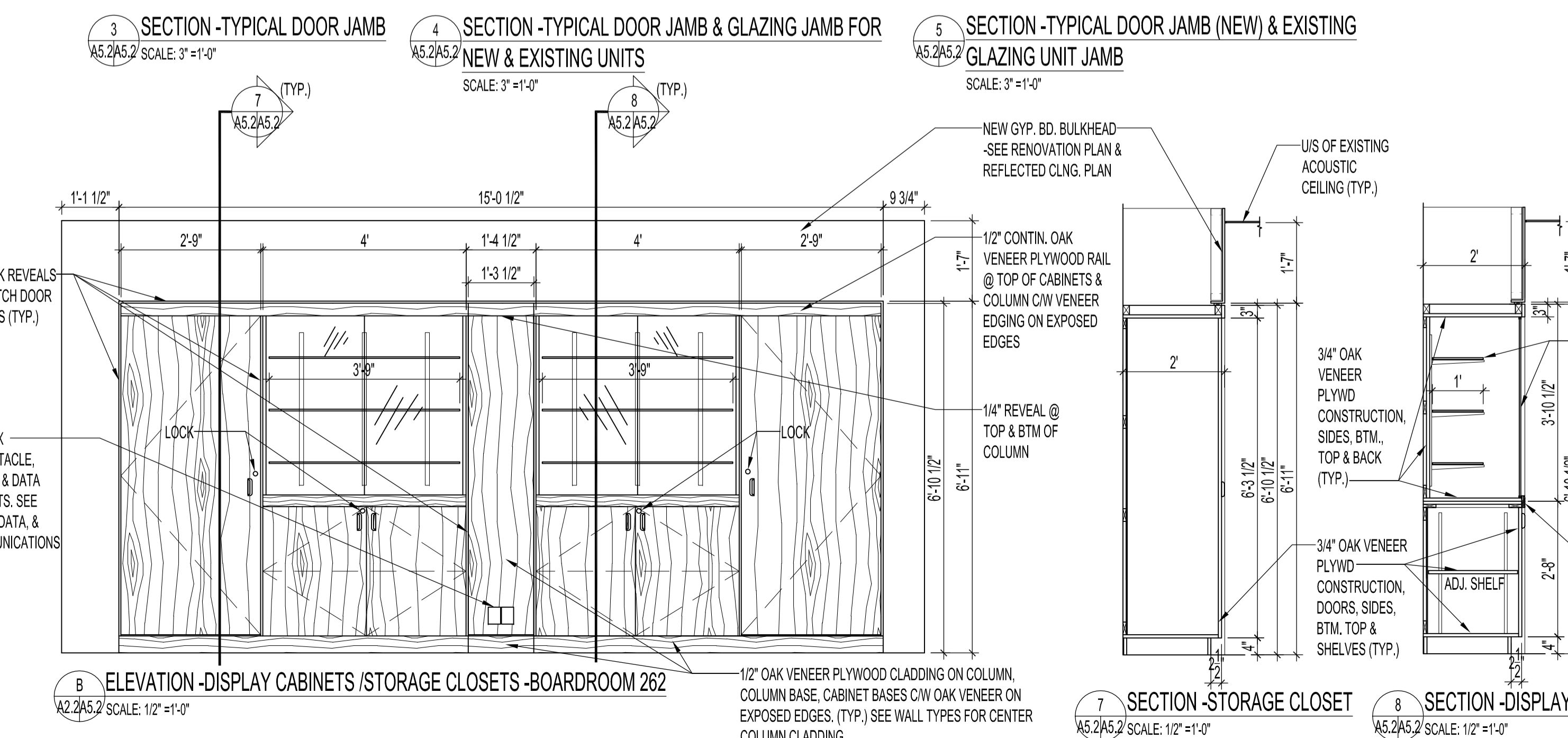
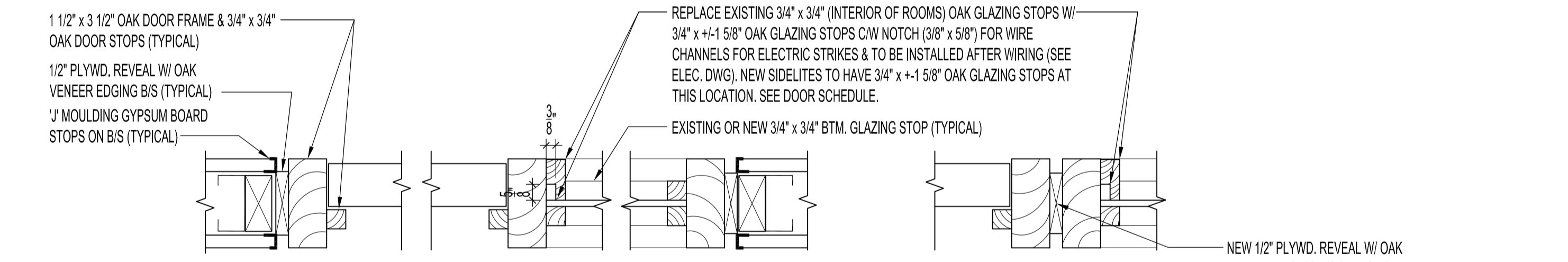
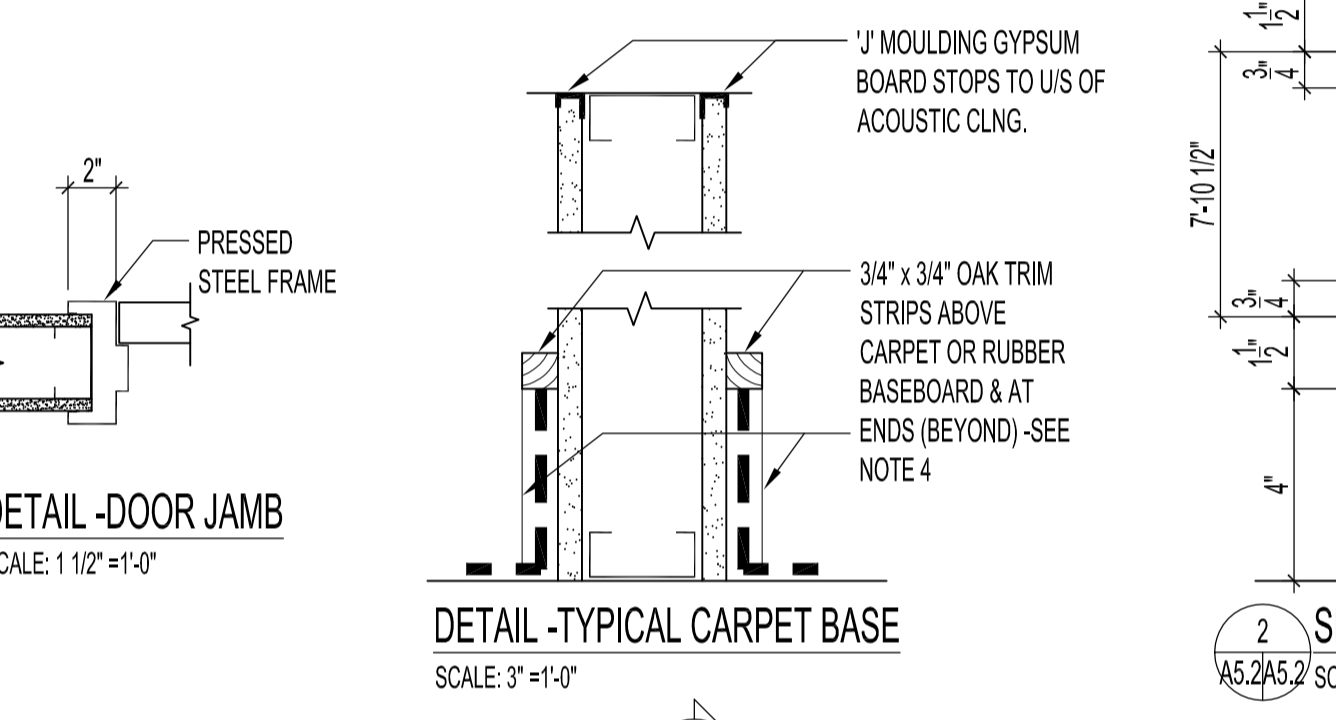
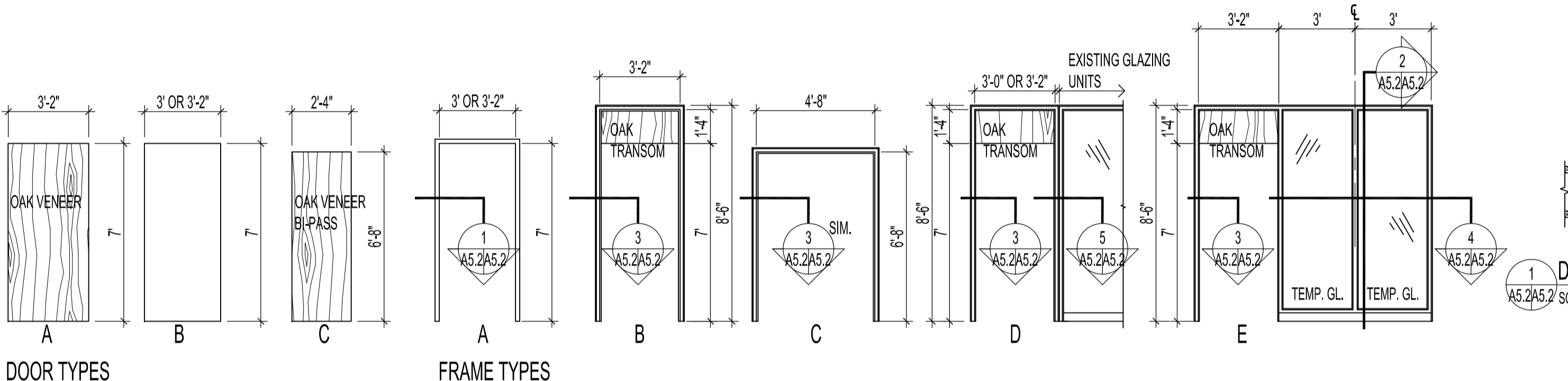
ABBREVIATIONS S.C.W.D.-SOLID CORE WOOD H.C.W.D.-HOLLOW CORE WOOD NAT.-NATURAL FINISH TO MATCH EXISTING ON SITE H.M.-HOLLOW METAL PT.-PAINT P.S.-PRESSED STEEL

HARDWARE CODES	
GROUP #1	SCHLAGE LOCKSET & TRIM TO MATCH EXISTING ON SITE REPLACE EXISTING HARDWARE WITH ELECTRIC STRIKE HES 5000-504 LBM 630 SERIES NOTE: SUPPLY & WIRING OF ELECTRIC STRIKE & CARD ACCESS SYSTEM BY OTHERS ROUTING OF WIRING IN DOOR JAMBS IS REQUIRED.
GROUP #2	REPLACE EXISTING HARDWARE WITH ELECTRIC STRIKE HES 9600-630 SERIES NOTE: SUPPLY & WIRING OF ELECTRIC STRIKE & CARD ACCESS SYSTEM BY OTHERS ROUTING OF WIRING IN DOOR JAMBS IS REQUIRED.
GROUP #3	SCHLAGE HINGES TO MATCH EXISTING ON SITE SCHLAGE PRIVACY KNOB & TRIM TO MATCH EXISTING ON SITE FLOOR MOUNTED DOOR STOP-FINISH TO MATCH EXISTING ON SITE
GROUP #4	SCHLAGE LOCKSET & TRIM TO MATCH EXISTING ON SITE FLOOR MOUNTED DOOR STOP-FINISH TO MATCH EXISTING ON SITE ELECTRIC STRIKE HES 5000-504 LBM 630 SERIES BY OTHERS NOTE: SUPPLY & WIRING OF ELECTRIC STRIKE & CARD ACCESS SYSTEM BY OTHERS ROUTING OF WIRING IN DOOR JAMBS IS REQUIRED.
GROUP #5	SCHLAGE HINGES TO MATCH EXISTING ON SITE SCHLAGE LEVER HANDLES JUPITER R26 FLOOR MOUNTED DOOR STOP-FINISH TO MATCH EXISTING ON SITE CLOSER C1141 SERIES SLIM LINE COVER INCLUDED NON HANDED KICKPLATES K104 12 x 34 628 FINISH ELECTRIC STRIKE HES 5000-504 LBM 630 & CARD ACCESS SYSTEM BY OTHERS NOTE: SUPPLY & WIRING OF ELECTRIC STRIKE & CARD ACCESS SYSTEM BY OTHERS ROUTING OF WIRING IN DOOR JAMBS IS REQUIRED.
GROUP #6	SCHLAGE PASSAGE KNOB & TRIM TO MATCH EXISTING ON SITE
GROUP #7	USE STANDARD B-PASS DOOR HARDWARE

MEETING ROOM 262
HARDWARE
 -HINGES TO BE BLUM CLIP 170 DEGREES SELF CLOSING NICKEL FINISH.
 (2) PAIRS REQUIRED FOR STORAGE CLOSET DOORS. (1) PAIR FOR OTHER CABINETS
 -DRAWER SLIDES ACCURIDE 3017
 -INTERIOR RECESSED ADJ. SHELVING STANDARDS & CLIPS TO BE K&V CHROME 255 & 256
 -DRAWER & DOOR PULLS TO MATCH EXISTING ON SITE IN MEETING ROOM 202 OR BY RICHELIEU #05464 OAK PULLS OR RICHELIEU #05403 25.1 ALL PULLS TO HAVE A NATURAL FINISH.
 -RICHELIEU SLIDING DOOR HARDWARE SERIES #150 (SATIN CHROME) TROLLEY DO12916 , FINGER GRIPS 8575175, END CAPS CP148140, GLASS DOOR LOCK 68101175, CABINET CAM LOCK HAFELE 235.04.654, ELBOW CATCH HAFELE 245.70.107 STEEL FINISH
 -K&V HEAVY DUTY STANDARDS #82 @ 48" (BLACK) & HEAVY DUTY BRACKETS #182 @ 12.5" (BLACK)
FINISHES
 1. ALL INTERIOR MELAMINE TO BE WHITE UNLESS NOTED OTHERWISE.
 2. ALL SOLID & VENEER OAK TO HAVE A NATURAL FINISH TO MATCH EXISTING ON SITE.
PLASTIC LAMINATE FINISH
 FORMICA #3512-58 -'METAL EARTH' MATTE FINISH

- NOTES :**
- STANDARDS OF MATERIAL AND QUALITY OF CONSTRUCTION TO MEET AMMAC STANDARDS.
 - PROVIDE 5 SETS OF SHOP DRAWINGS.
 - ALL NEW DOORS, TRANSOMS, FRAMES, TRIM, SIDELITES, BASEBOARD TRIM TO BE SOLID OAK W/ A NATURAL FINISH & TO MATCH EXISTING ON SITE UNLESS OTHERWISE NOTED.
 - ALL EXISTING OAK BASEBOARD TRIM TO BE REPLACED OR REPAIRED AS REQUIRED.
 - ALL EXISTING & NEW DOOR (WOOD OR METAL) ASSEMBLIES TO BE MODIFIED FOR INSTALLATION OF ELECTRIC STRIKES UNLESS NOTED OTHERWISE.
 - ALL EXISTING & NEW DOORS W/ NEW ELECTRIC STRIKES TO HAVE CORE CYLINDERS REPLACED W/ NEW CORES THAT ARE KEYS ALIKE. CORE TYPE TO BE DETERMINED.
 - REPLACE EXISTING PASSAGE SETS W/ NEW LOCKSETS UNLESS NOTED OTHERWISE.
 - CORRIDOR 220 -PATCH WALL WHERE RENOVATION OCCURED AND PAINT ENTIRE WALL TO MATCH. SUPPLY & INSTALL MATCHING 4" RUBBER BASEBOARD TO RENOVATED WALL
 -SUPPLY & INSTALL ONE EACH BARRIER-FREE WASHROOM SIGN FOR THE WOMEN'S & MEN'S WASHROOM NEW DOORS. SIGNS TO BE 7" x 7" BLACK TACTILE & BRALLE ON BRONZE FINISH ENGRAVING STOCK. SUPPLIED BY INSIGN ARCHITECTURAL SIGNAGE. REQUIREMENTS ARE TO FOLLOW THE LATEST MANITOBA BUILDING CODE STANDARDS FOR BARRIER-FREE ACCESS & THE 2006 CITY OF WINNIPEG ACCESSIBILITY DESIGN STANDARDS.
 - PATCH ALL WALLS AS REQUIRED AND PREPARE FOR NEW PAINT IN EXISTING & NEW ROOMS.
 - SUPPLY & INSTALL CHROME ROD & FLANGES, OAK SHELF & SUPPORTS TO MATCH CLOSETS ON SITE.
 - APPLY 2 1/2" RB. BB. TO NEW WALLS BETWEEN SHOWER & CORRIDOR. SEE FLOOR FINISH LEGEND FOR RUBBER BASEBOARD TYPE. APPLY SALVAGED 3" BASE CERAMIC TILE TO JAMBS OF REMOVED DOOR & FRAME OPENINGS AS REQUIRED. SEE DEMOLITION DWG. FOR LOCATIONS OF SALVAGED TILE & REMOVED DOORS & JAMBS.

ORIGINAL STAMPED BY: R.K. FOK LI, Arch.
 DATE: 2009.12.14



NO.	REVISION/DESCRIPTION	BY	DATE
SEALS			

DRAWN BY MMK **CHECKED BY** USER APPROVAL **APPROVED**

DATE: 2009.12.14

CITY OF WINNIPEG
 PLANNING, PROPERTY AND DEVELOPMENT DEPARTMENT
 CIVIC ACCOMMODATIONS DIVISION
 300 - 65 GARRY ST. R3C 4K4

PROJECT
 MANDARIN BUILDING
 WFPS RELOCATION TO SECOND FLOOR

185 KING STREET

SHEET TITLE
 MILLWORK ELEVATIONS & SECTIONS,
 DOOR & ROOM FINISH SCHEDULES
 & DETAILS

SCALE AS SHOWN **PROJECT NO.** 2008-059-03 **SHEET NO.** A5.2

DRAWING SHEET SIZE: A1 (841mm x 594mm) PLOT 1:1