

**PARTIAL MAIN FLOOR PLAN - MECHANICAL DEMOLITION**  
SCALE: 1/8"=1'-0"

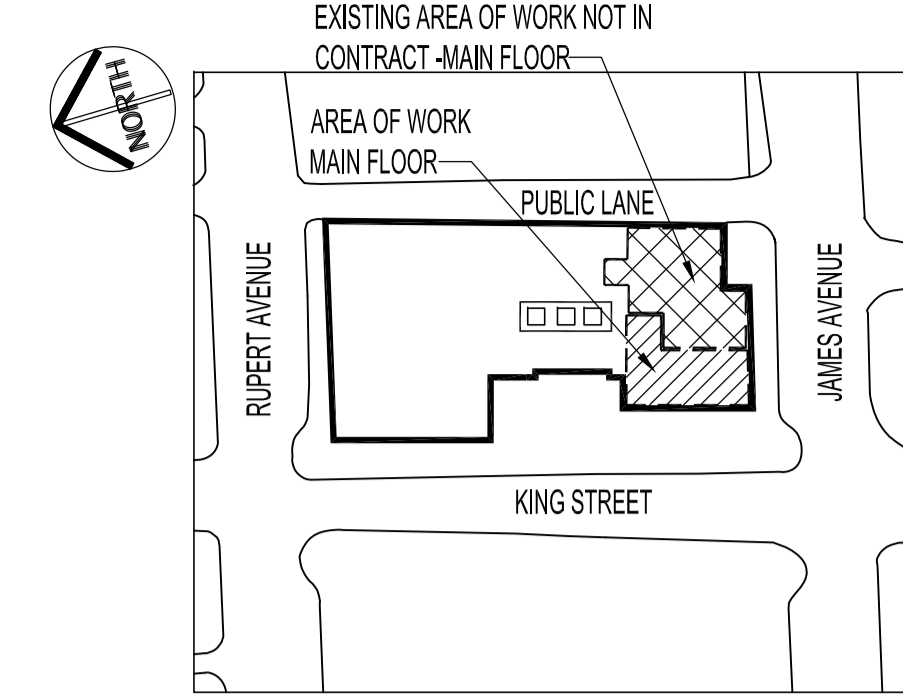
**MECHANICAL DEMOLITION NOTES:**

ALSO SEE NOTES & MECHANICAL RENOVATION DWG. CONTRACTOR TO REMOVE ALL MECHANICAL EQUIPMENT, MATERIALS, ETC. THAT ARE INDICATED WITH A DASHED LINE. ALL REMOVED EQUIPMENT, MATERIALS, ETC. SHALL BE CLEANED AND RELOCATED OR RE-USED FOR NEW CONSTRUCTION WHERE POSSIBLE. MECHANICAL EQUIPMENT, MATERIALS NOT REQUIRED FOR RENOVATION WORK SHALL BE REMOVED & DISCARDED FROM SITE.

--- EXISTING TO REMAIN  
- - - - - TO BE DEMOLISHED

- 1 REMOVE & RELOCATE (9) EXISTING 24"X4" EGG CRATE STYLE RETURN GRILLES.
- 2 REMOVE & RELOCATE (7) EXISTING 24" X 24" SUPPLY DIFFUSERS. REMOVE & DISCARD DUCT BRANCHES AND CAP-OFF AT SUPPLY PLENUMS. SEE MECHANICAL RENOVATION DWG.
- 3 REMOVE & RELOCATE EXISTING WALL THERMOSTATS (T-HP13 & T-HP18, Z1-T6). MODIFY EXISTING OR REPLACE WITH NEW WIRING & CONDUIT (IF APPLICABLE) TO ACCOMMODATE NEW LOCATIONS. SEE MECHANICAL SYMBOLS.
- 4 REMOVE & DISCARD ROOM TRANSFER DUCTS LOCATED IN WALLS ABOVE CEILING TILE. REPAIR WALL OPENINGS ON BOTH SIDES AS PER ARCHITECTURAL DWG.
- 5 REMOVE & RELOCATE BASEBOARD (BSBD) RADIANT HEAT THERMOSTAT. MODIFY EXISTING WIRING & CONDUIT (IF APPLICABLE) TO ACCOMMODATE NEW THERMOSTAT LOCATION.
- 6 STRAIGHTEN FINS & CLEAN ALL PERIMETER HEATING RADIATORS ASSOCIATED WITH RENOVATION WORK. CONTRACTOR TO REPORT ON CONDITION OF EXISTING.

MECHANICAL SYMBOLS	
	FLEX DUCT THERMO FLEX, MODEL S-TL
	ZONE TEMPERATURE SENSOR (TS) FOR METASYS ARE MONITORED BY CITY OF WINNIPEG CENTRAL CONTROL -PH-986-2351 PRIOR TO RELOCATING. Z1=ZONE 1, T6=TS6
	HEAT PUMP THERMOSTAT: T = THERMOSTAT, HPXX = HEAT PUMP No.
	TYPE OF GRILLE OR DIFFUSER SIZE IN INCHES CFM (R/A-RETURN AIR)
	SUPPLY AIR (EXISTING TO REMAIN)
	SUPPLY AIR (TO BE REMOVED & RE-USED)
	SUPPLY AIR (NEW)
	RETURN AIR GRILLE (EXISTING TO REMAIN)
	RETURN AIR GRILLE (TO BE REMOVED & RE-USED)
	BALANCING DAMPER (NEW & EXISTING)



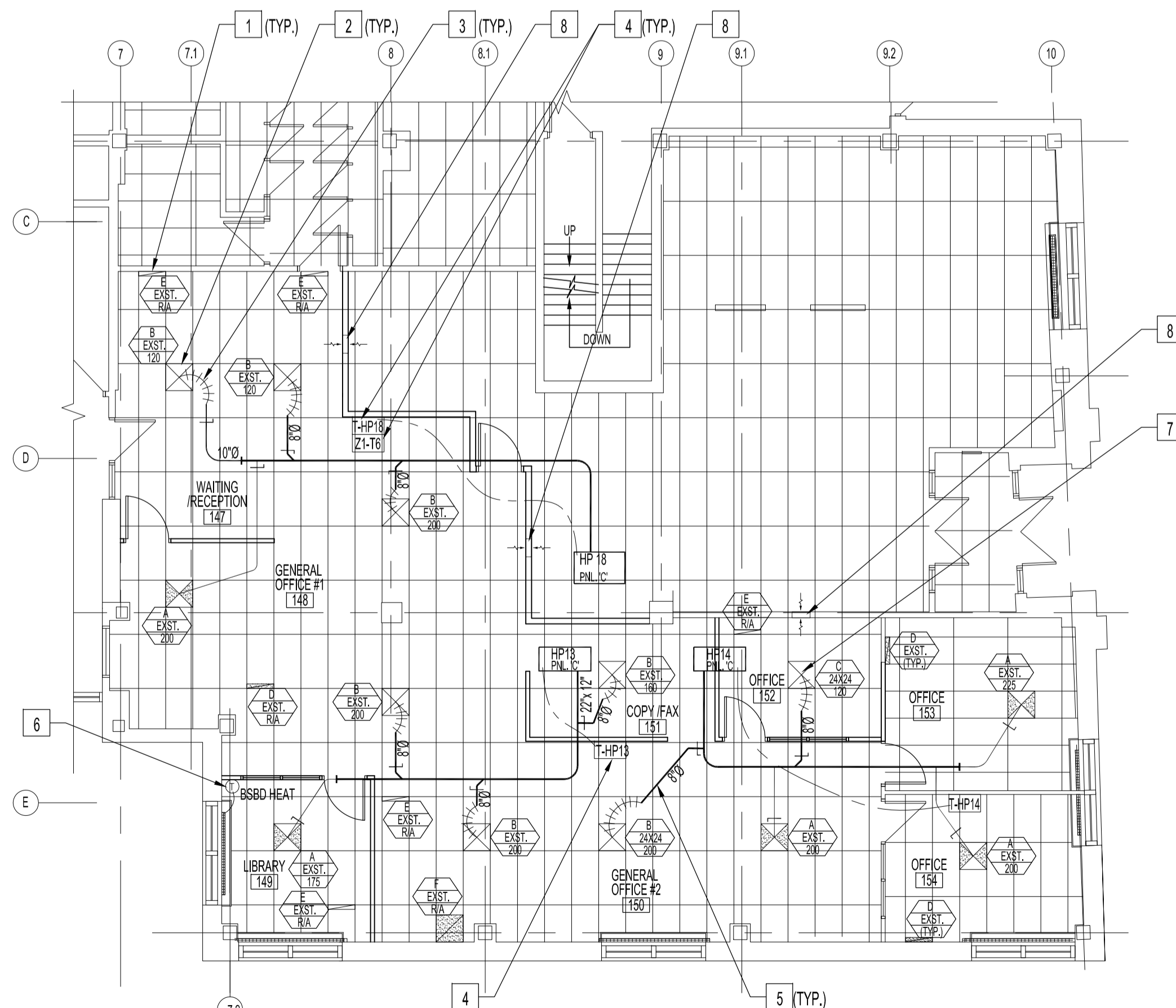
**KEY PLAN**  
SCALE: N.T.S.

**DRAWING LIST**

SHEET No:	SHEET TITLE
M1.1	PARTIAL MAIN FLOOR PLAN - MECHANICAL DEMOLITION & RENOVATION
M2.1	MECHANICAL SPECIFICATIONS

**NOTES :**

THESE DRAWINGS SHALL NOT BE SCALED.  
THE CONTRACTOR SHALL VISIT THE SITE AND SATISFY ONESELF ALL DIMENSIONS, DATUM, AND DETAILED INFORMATION SHOWN ARE CORRECT.  
THE CONTRACTOR IS TO REVIEW AND COORDINATE ALL ARCHITECTURAL, MECHANICAL AND ELECTRICAL DRAWINGS FOR ADDITIONAL OPENINGS THROUGH FLOORS, WALLS, AND CEILINGS FOR DUCT, PIPE & ELECTRICAL RISERS AND ALL OPENINGS NOT SHOWN ON DRAWINGS.  
ALL OPENINGS THROUGH FIRE ASSEMBLIES ARE TO BE FIRE STOPPED AND SEALED WITH ULIC APPROVED FIRE STOPPING TO MAINTAIN THE INTEGRITY OF THE FIRE SEPARATION, AND PROVIDE A SMOKE-TIGHT BARRIER.  
ALL PRODUCTS AND MATERIALS TO BE USED AND INSTALLED SHALL CONFORM WITH MANUFACTURERS SPECIFICATIONS & APPLICABLE CODES.  
THE CONTRACTOR SHALL BE RESPONSIBLE TO PATCH AND MAKE GOOD ALL EXISTING CONSTRUCTION AFFECTED BY THE REMOVAL OF ALL ITEMS FORMING THE PART OF THE RENOVATION WORK.  
ALL MECHANICAL EQUIPMENT, COMPONENTS AND ASSOCIATED DUCTWORK SHALL BE REMOVED, CLEANED AND RETAINED ON SITE FOR NEW RENOVATION WORK PRIOR TO INSTALLATION UNLESS OTHERWISE NOTED. ALL MECHANICAL EQUIPMENT, COMPONENTS & DUCTWORK NOT USED FOR THIS RENOVATION WORK SHALL BE REMOVED FROM SITE. REMOVE & DISCARD ALL ABANDONED MECHANICAL EQUIPMENT & DUCTWORK SUPPORT HANGERS FROM CEILING SPACE OF RENOVATION WORK AREA.  
ALL EXISTING & NEW DUCTWORK AS PER RENOVATION WORK AREA SHALL BE SEALED AIR TIGHT. CONTRACTOR TO VERIFY.  
CONTRACTOR TO CO-ORDINATE MECHANICAL SYSTEMS EQUIPMENT, DISCONNECTIONS, SHUT DOWN & START UP WORK WITH CITY OF WINNIPEG, BUILDING SERVICES BRANCH PRIOR TO DEMOLITION & RENOVATION WORK.  
DAMAGE TO EXISTING SYSTEMS, EQUIPMENT, DUCTWORK, CONTROLS & ACCESSORIES TO BE DEMOLISHED OR REMAIN AS A RESULT OF THE CONTRACTORS WORK. RE-USE IS THE RESPONSIBILITY OF THE CONTRACTOR TO REPAIR AND/OR REPLACE WITH SIMILAR LIKE MATERIALS AT NO ADDITIONAL COST TO THE CITY OF WINNIPEG.  
ALL NEW, EXISTING & RELOCATED SUPPLY DUCTS SHALL BE INSULATED ON THE OUTSIDE WITH AN 1-1/2" THICK (MIN) FORMALDEHYDE-FREE, FLEXIBLE GLASS FIBER BLANKET WITH ALUMINUM FOIL FACING, JOHNS MANVILLE MICROLITE XG FORMALDEHYDE-FREE FIBER GLASS DUCT WRAP. BEFORE APPLYING DUCT WRAP, SHEET METAL DUCTS SHALL BE CLEAN, DRY AND TIGHTLY SEALED AT ALL JOINTS AND SEAMS. MANUFACTURERS INSTALLATION INSTRUCTIONS SHALL ALSO BE FOLLOWED. SUPPLY & INSTALL NEW GROMMETS AT VOLUME DAMPER RODS TO ALL NEW, EXISTING & RELOCATED ASSOCIATED WITH RENOVATION WORK AREA. INSTALL TO SILENCE OR ELIMINATE AIR LEAKAGE NOISE.  
IT IS THE RESPONSIBILITY OF THE CONTRACTOR TO REMOVE & REPLACE EXISTING CEILING SYSTEM UNLESS OTHERWISE NOTED ON THE ARCHITECTURAL DWG. THE EXISTING CEILING SYSTEM SHALL BE REMOVED TO AVOID DAMAGE. STORAGE OF CEILING SYSTEM COMPONENTS FOR RE-INSTALLATION IS THE RESPONSIBILITY OF THE CONTRACTOR. THE STORAGE OF ALL MATERIAL SHALL BE IN LOCATIONS APPROVED BY THE CITY OF WINNIPEG. CEILING SYSTEM SHALL MATCH ORIGINAL INSTALLATION. ANY COMPONENTS DAMAGED DURING DEMOLITION, RENOVATION, STORAGE OR RE-INSTALLATION WORK SHALL BE REPLACED WITH NEW AT NEW ADDITIONAL COST TO THE CITY OF WINNIPEG.  
**CAUTION:**  
ASBESTOS MATERIALS MAY BE PRESENT IN CEILING & WALL CAVITIES.  
CONTRACTOR SHALL FOLLOW HAZARDOUS MATERIAL STANDARD PROCEDURES & CONTACT CITY OF WINNIPEG, CENTRAL CONTROL OFFICE AT 986-2351.



**PARTIAL MAIN FLOOR PLAN - MECHANICAL RENOVATION**  
SCALE: 1/8"=1'-0"

**MECHANICAL RENOVATION NOTES:**

SUPPLY & INSTALL NEW UNLESS OTHERWISE NOTED.  
ALSO SEE MECHANICAL DEMOLITION NOTES & DIFFUSER SCHEDULE.

- 1 RETURN AIR GRILLES, 24"X4" EGG CRATE STYLE, RELOCATED.
- 2 SUPPLY DIFFUSERS, 24"X24", RELOCATED OR NEW. CLEAN GRILLES PRIOR TO RELOCATING. NEW GRILLE (S), IF REQUIRED TO MATCH EXISTING.
- 3 FLEX DUCT TAKE-OFFS FROM BRANCH LINES CONNECTED TO EXISTING OR NEW 24" X 24" SUPPLY DIFFUSERS. ALL FLEX DUCTWORK SHALL NOT TO EXCEED 4'-0" IN LENGTH. SUPPLY & INSTALL VOLUME DAMPERS ON HARD DUCT EXTENSIONS ONLY.
- 4 RELOCATE THERMOSTATS & TEMPERATURE SENSORS. PRIOR TO RELOCATING CALL CITY OF WINNIPEG CENTRAL CONTROL (986-2351), CONNECT AS SHOWN. ALSO SEE ELECTRICAL DWG.
- 5 NEW GALVANIZED DUCT EXTENSIONS AND VOLUME DAMPERS CONNECTED TO SUPPLY PLENUMS.
- 6 RELOCATE PERIMETER RADIANT HEATING THERMOSTAT. RECONNECT OR SUPPLY & INSTALL NEW CONTROL WIRING FROM EXISTING RADIATOR CONTROL VALVE TO RELOCATED THERMOSTAT.
- 7 NEW SUPPLY DIFFUSER, 24"X24" CONNECTED TO NEW DUCTWORK COMPLETE WITH VOLUME DAMPER.
- 8 PROVIDE (3) 16" X 16" WALL OPENINGS, BOTH SIDES AND ABOVE CEILING TILE, FOR TRANSFER AIR.

**DIFFUSER & GRILLE SCHEDULE**

TYPE	QTY.	DESCRIPTION	MANUFACTURER
A	5	24"X24" SQUARE 4 - CONE DIFFUSER. ADJUST AIR FLOW SHOWN.	EXISTING TO REMAIN
B	7	24"X24" SQUARE 4 - CONE DIFFUSER. SUPPLY & INSTALL 8"Ø - 10"Ø TRANSITION OR TO SUIT DIFFUSER INLET. ADJUST AIR FLOW SHOWN.	RE-INSTALL EXISTING
C	1	24"X24" SQUARE 4 - CONE DIFFUSER. MODEL No. SCD / 3P / 4C / COLOR TO MATCH EXISTING. INLET DIAMETER TO SUIT. ADJUST AIR FLOW SHOWN	PRICE
D	3	24" X 4" EGG CRATE FACE RETURN.	EXISTING TO REMAIN
E	5	24" X 4" EGG CRATE FACE RETURN.	RE-INSTALL EXISTING
F	1	24" X 24" EGG CRATE FACE RETURN.	EXISTING TO REMAIN

NEW GRILLE SCHEDULE QUANTITIES ARE APPROXIMATE AND SHOWN ABOVE FOR REFERENCE ONLY. CONTRACTOR IS RESPONSIBLE FOR QUANTITY TAKE-OFF FROM DRAWING.

NO.	REVISION/DESCRIPTION	BY	DATE
SEALS			

ORIGINAL STAMPED BY: D.A. PALEY, P.ENG  
DATE: 2009.12.29

DRAWN BY	RCP	CHECKED BY	APPROVED
DATE	2009.12.24	USER APPROVAL	

**CITY OF WINNIPEG**  
PLANNING, PROPERTY AND DEVELOPMENT DEPARTMENT  
MUNICIPAL ACCOMMODATIONS DIVISION  
300 - 65 GARRY ST. R3C 4K4

**PROJECT**  
MANDARIN BUILDING  
WFPS RELOCATION TO MAIN FLOOR

185 KING STREET  
**SHEET TITLE**  
PARTIAL MAIN FLOOR PLAN  
MECHANICAL DEMOLITION & RENOVATION

SCALE	PROJECT NO.	SHEET NO.
AS SHOWN	2008-059-01	M1.1