

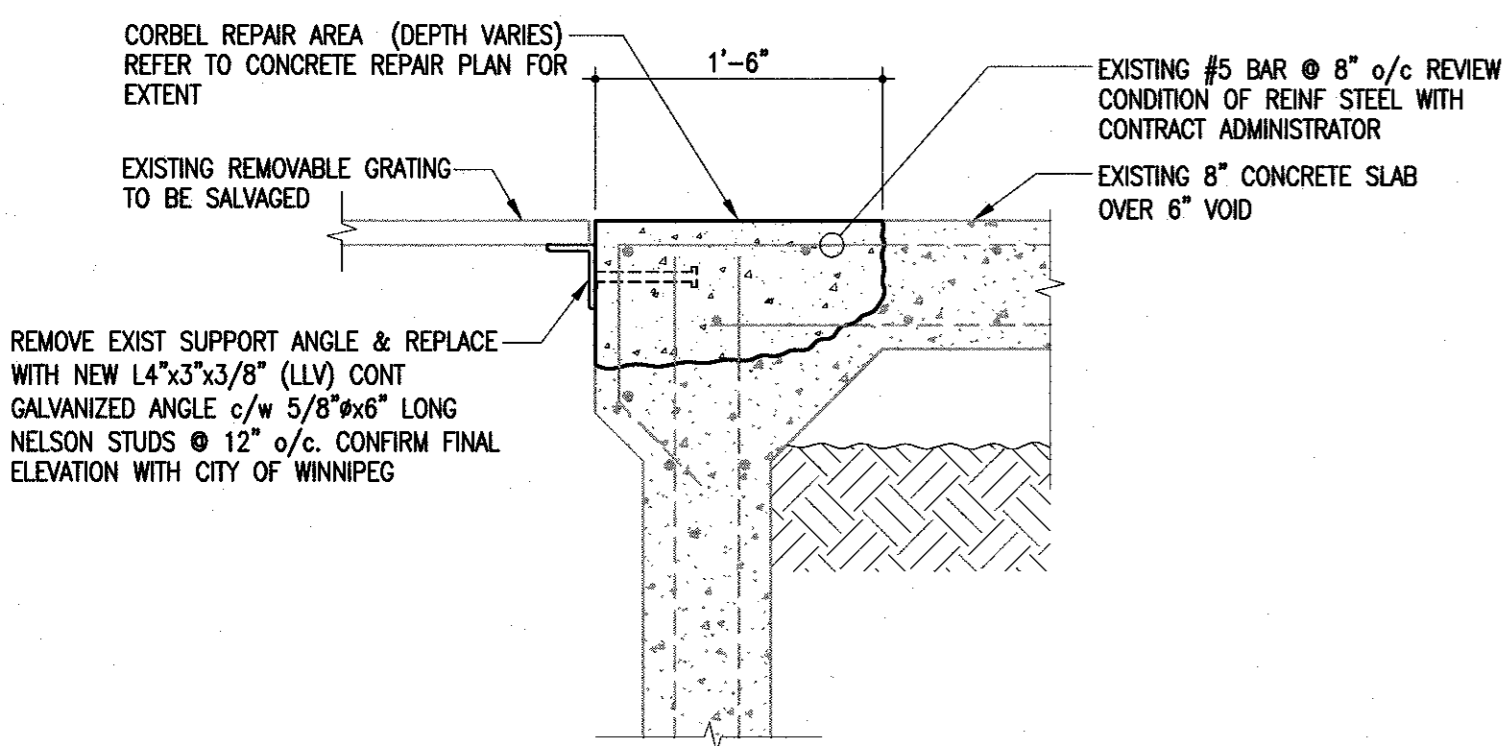
CONCRETE REPAIR PLAN

SCALE: 1/4"=1'-0"



NOTE:

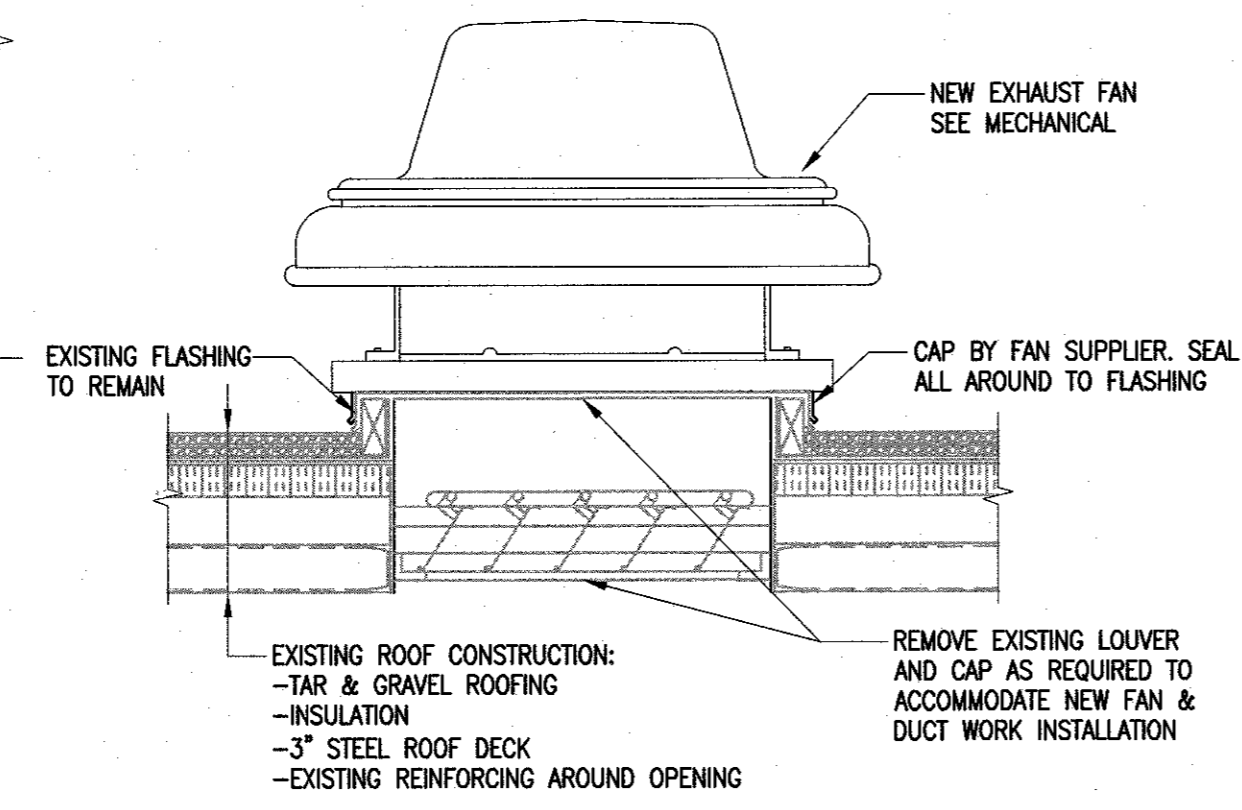
- AREAS SHOWN ARE APPROXIMATE AND MUST BE CONFIRMED WITH CONTRACT ADMINISTRATOR DURING CONSTRUCTION.
- REPAIRS MUST BE LIMITED TO 4'-0" WIDE STRIPS ALONG PERIMETER OF PIT (WITH 4'-0" UNDISTURBED BETWEEN) TO MAINTAIN STRUCTURAL INTEGRITY OF CONCRETE SLAB.



1 CORBEL DETAIL

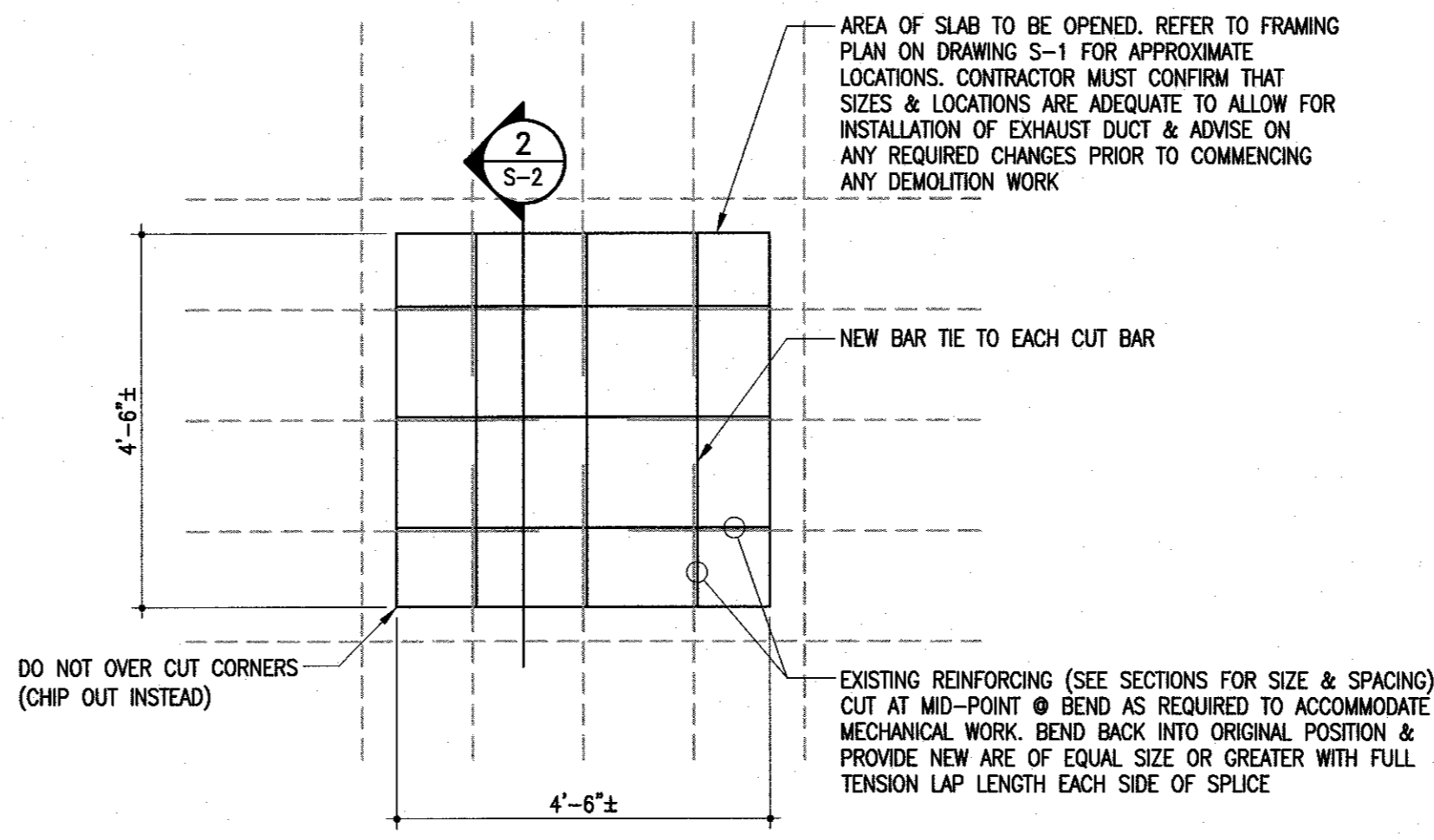
S-2 1" = 1'-0"

- TYPICAL AROUND PERIMETER OF PIT



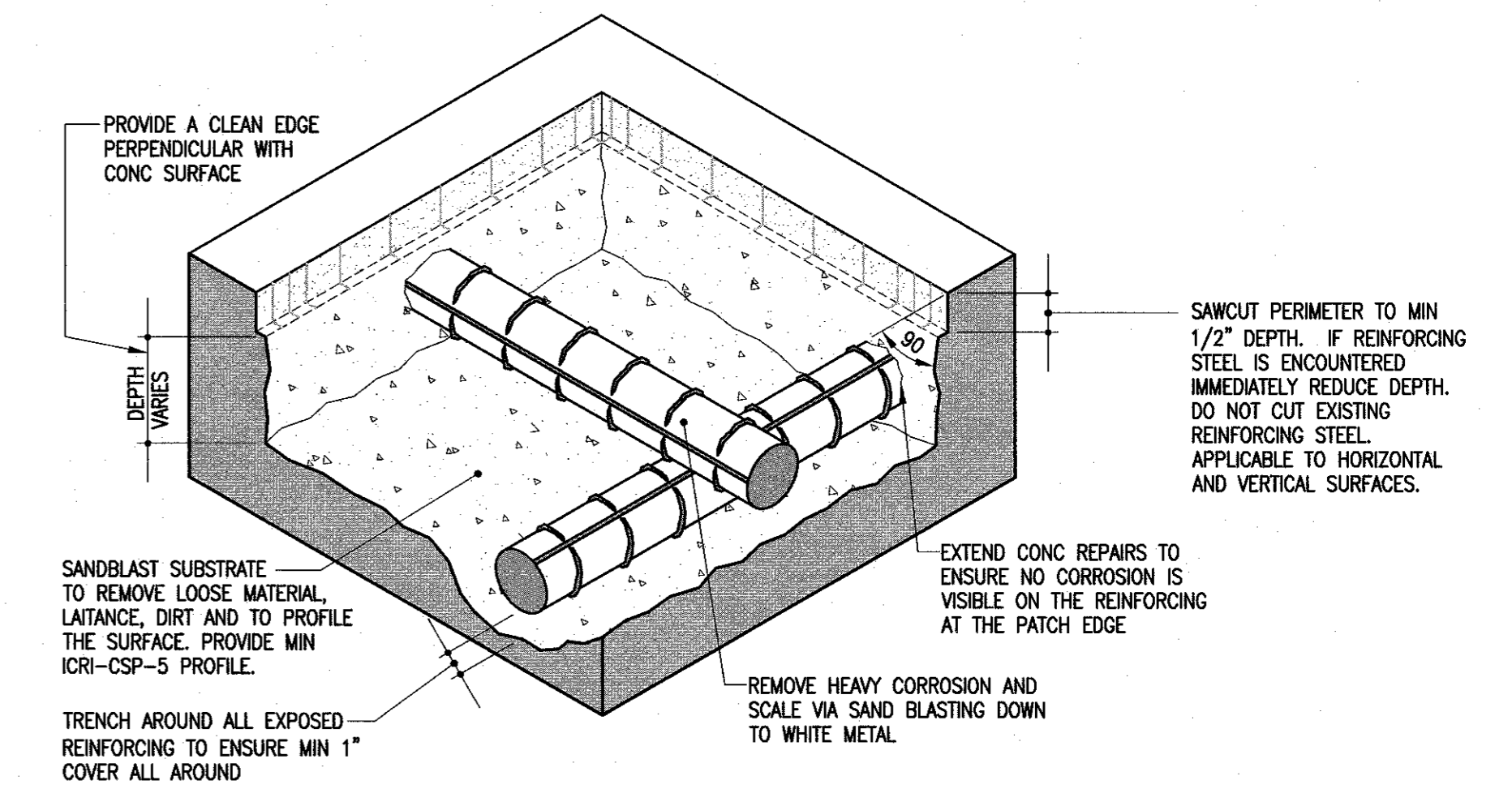
3 DETAIL AT NEW FAN

S-2 1" = 1'-0"



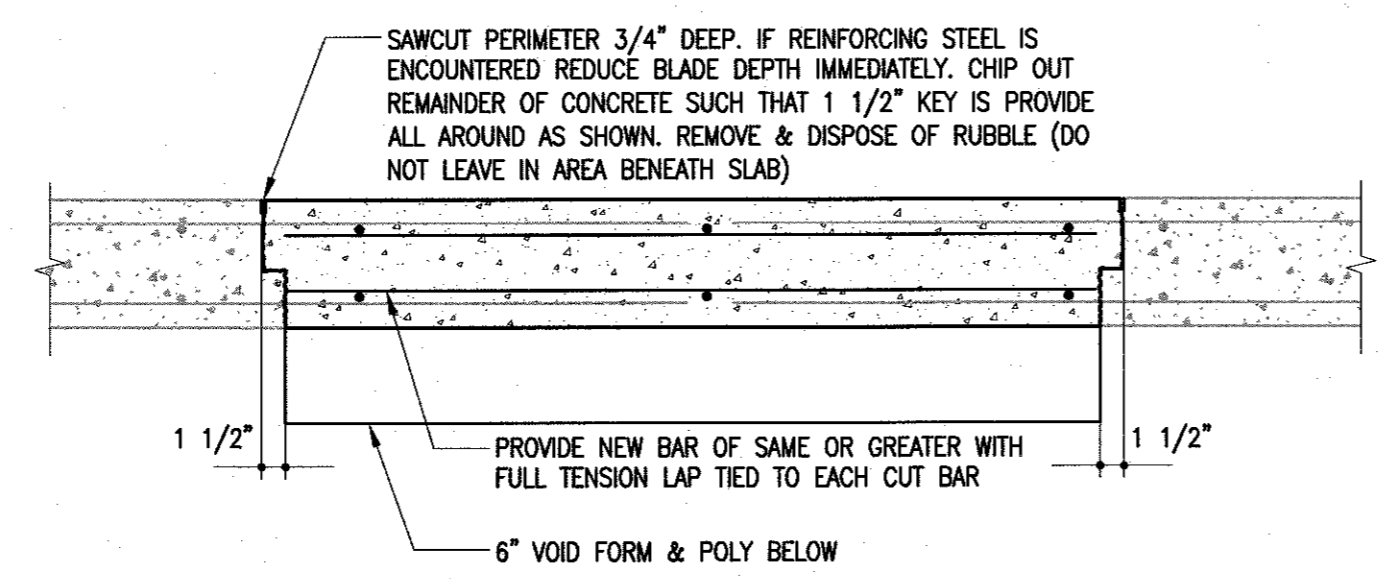
PLAN DETAIL - OPENING IN EXISTING STRUCTURAL SLAB

SCALE: 1/4"=1'-0"



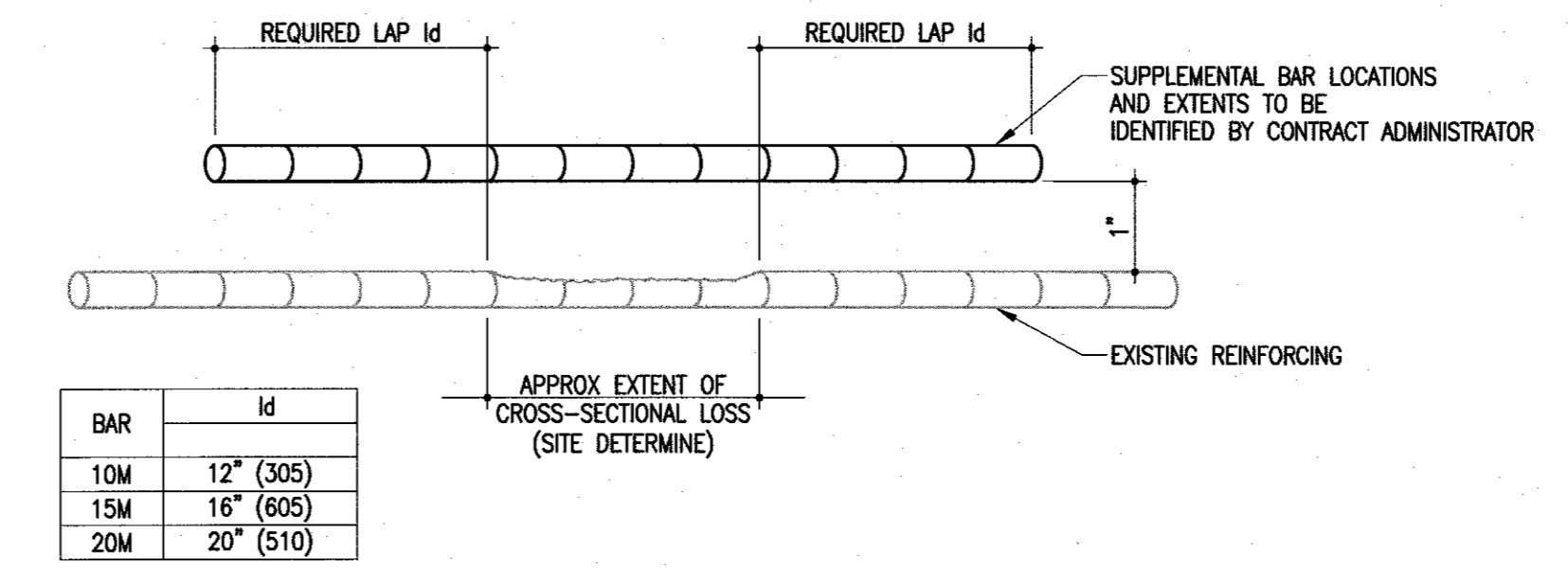
TYPICAL SURFACE PREPARATION OF DELAMINATED CONCRETE

C S-2 N.T.S. (APPLICABLE TO TYPE 1 THROUGH TYPE 4)



2 SECTION

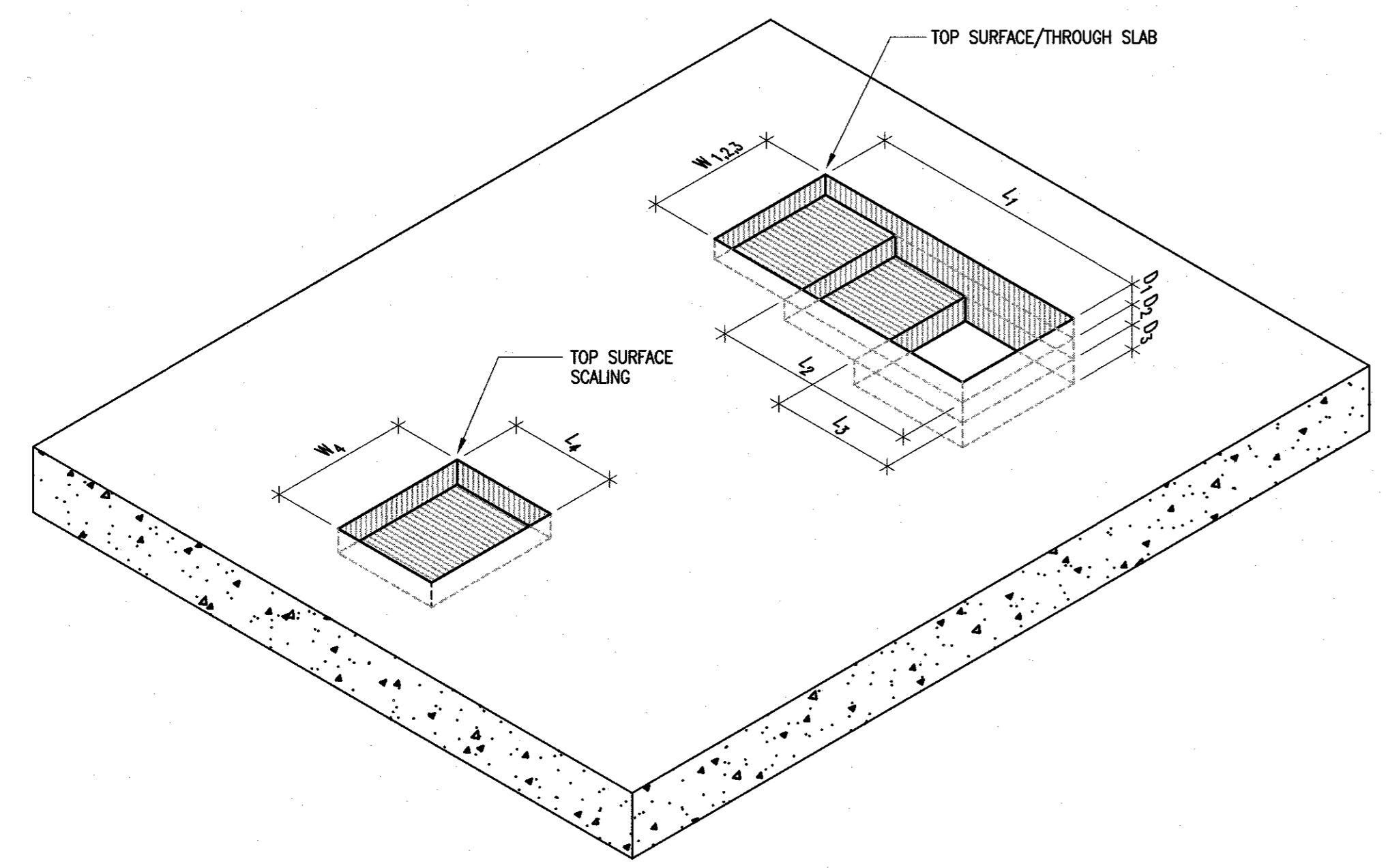
S-2 1" = 1'-0"



D REINFORCING BAR SPLICE DETAIL

S-2 N.T.S. (UNIT PRICE PER LB.)

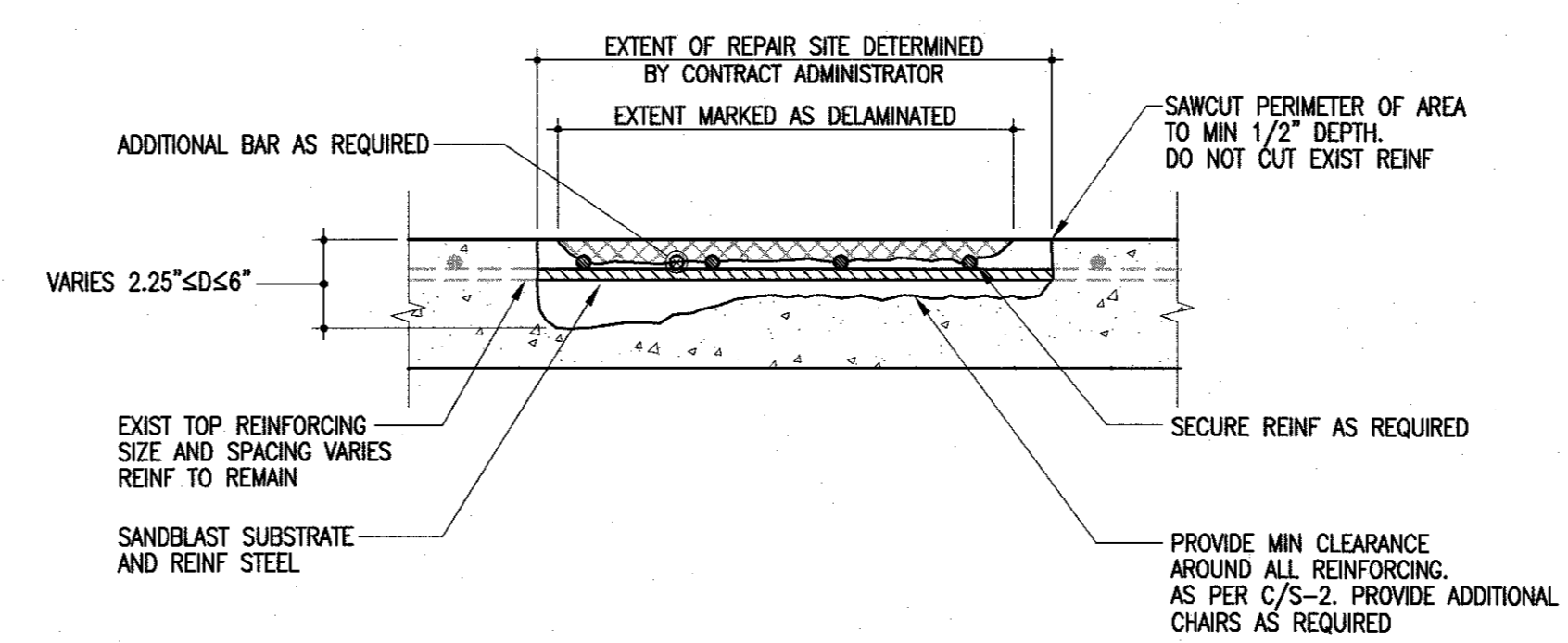
BAR	ld
10M	12" (305)
15M	16" (605)
20M	20" (510)



B UNIT PRICE REPAIR SCHEDULE/DIAGRAM

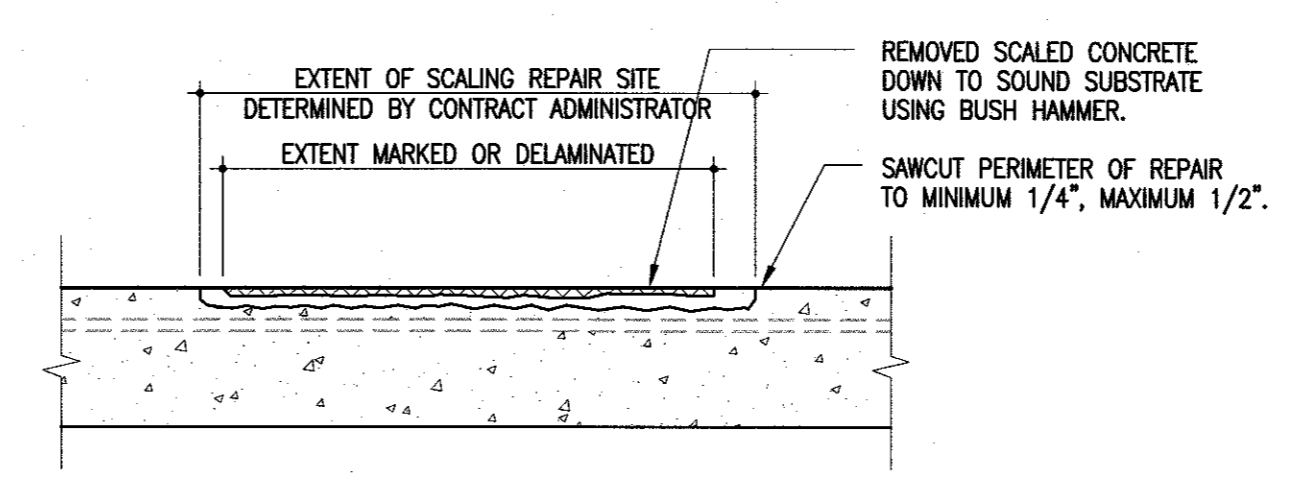
S-2 N.T.S.

TYPE	DESCRIPTION	MEASUREMENT	INCREMENT	UNIT RATE	SECTION	DETAIL
TYPE 1	TOP SURFACE DELAMINATION (0" TO 3" DEPTH)	L1 x W1	2 1/4" ≤ D1 ≤ 3"	\$/FT²	037110	E/S-2
TYPE 2	TOP SURFACE DELAMINATION (3" TO 6" DEPTH)	L2 x W2	3" < D2 ≤ 6"	\$/FT²	037110	E/S-2
TYPE 3	THROUGH-SLAB	L3 x W3	D3 = D AFTER 6" REMOVAL	\$/FT²	037110	G/S-2
TYPE 4	TOP SURFACE SCALING	L4 x W4	1/4" ≤ D ≤ 3/4"	\$/FT²	037200	F/S-2



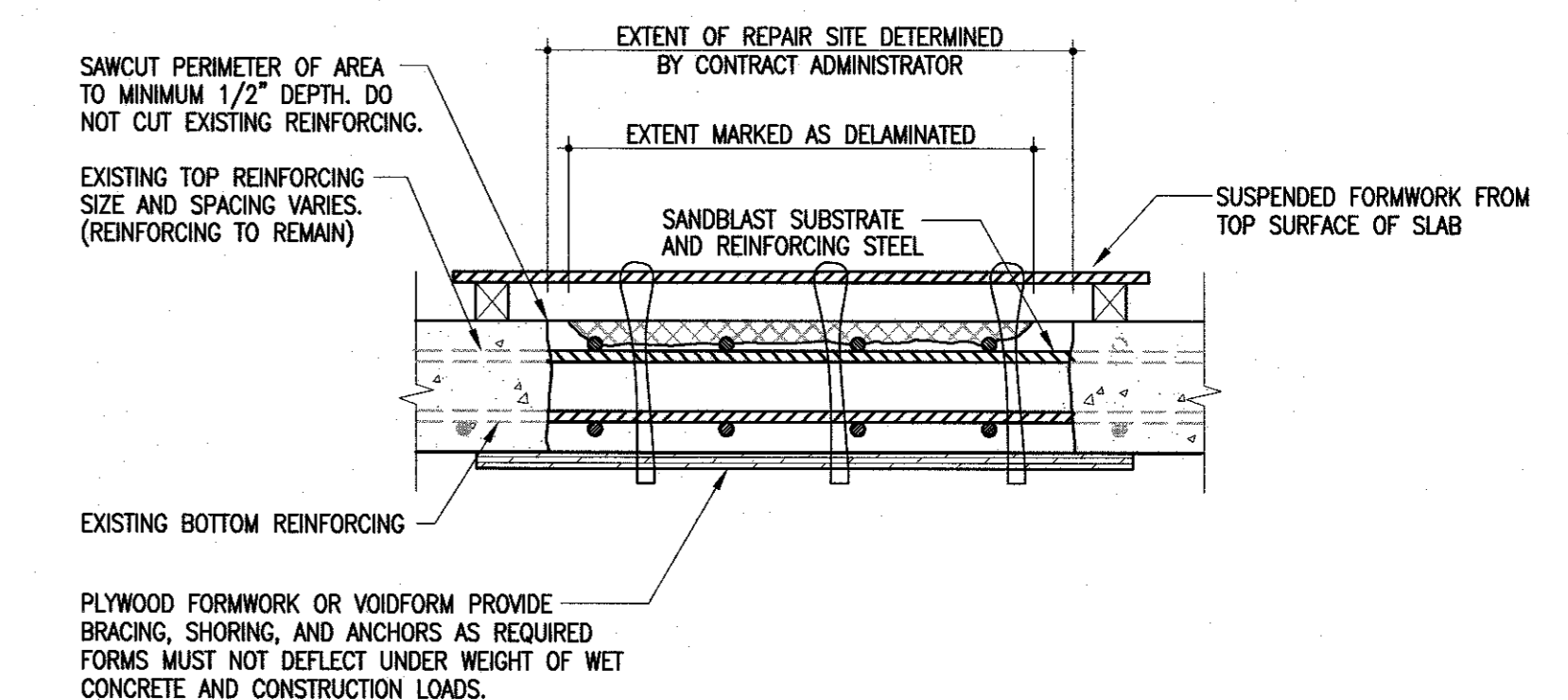
E TYPICAL TOP SURFACE REPAIR DETAIL

S-2 N.T.S. (TYPE 1 AND 2)



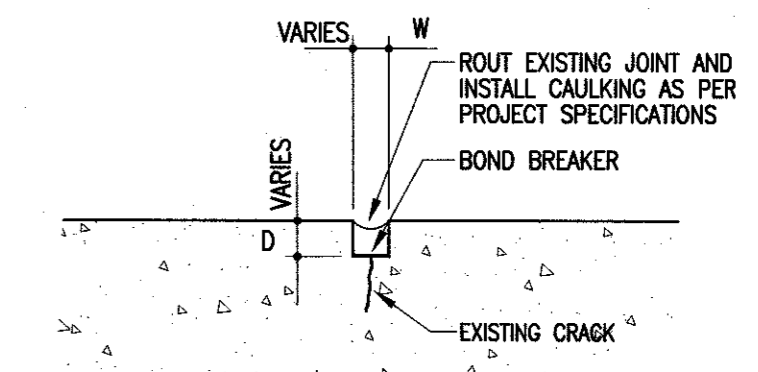
F TYPICAL SCALING REPAIR DETAIL

S-2 N.T.S. (TYPE 4)



G TYPICAL THROUGH SLAB REPAIR DETAIL

S-2 N.T.S. (TYPE 3)



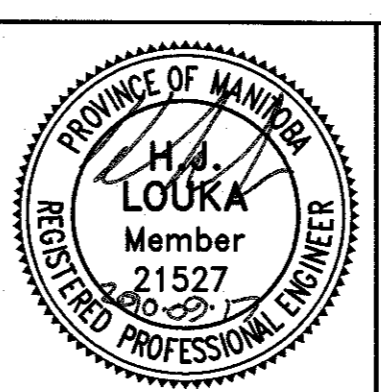
H TYPICAL CRACK REPAIR DETAIL

S-2 N.T.S. (UNIT PRICE PER LINEAL FOOT)

- NOTES:
- ANY EXISTING CAULKING MUST BE REMOVED PRIOR TO SAW-CUTTING JOINT OR CRACK.
 - EACH SIDE OF EXIST. JOINT OR CRACK MUST BE CUT.
 - SANDBLAST CONCRETE SURFACE TO PROVIDE CLEAN SOUND JOINT.
 - REMOVE LOOSE PARTICLES BY BLOWING OUT JOINT WITH OIL FREE COMPRESSED AIR.
 - INSTALL PRIMER, BOND BREAKER, AND CAULKING AS PER PROJECT SPECIFICATIONS. REFER TO SPECIFICATION SECTION 07910.



No.	Date	Issue/Revision	By
0	SEPT 17 2010	ISSUED FOR TENDER	HJL



300-275 Carlton Street
Winnipeg, Manitoba R3C 5R6
T 204. 943. 7501
F 204. 943. 7507

The General Contractor shall check & verify all dimensions and report any errors or omissions to the designers.

Project: **WINNIPEG TRANSIT GARAGE**
421 OSBORNE STREET
WINNIPEG, MANITOBA

Sheet Title: **CONCRETE REPAIR PLAN, SECTION AND DETAILS**

Design: HJL Drawn: MS Checked: HJL Scale: AS NOTED Date: SEPT 2010 File: 2008-1160

Sheet No. **S-2**