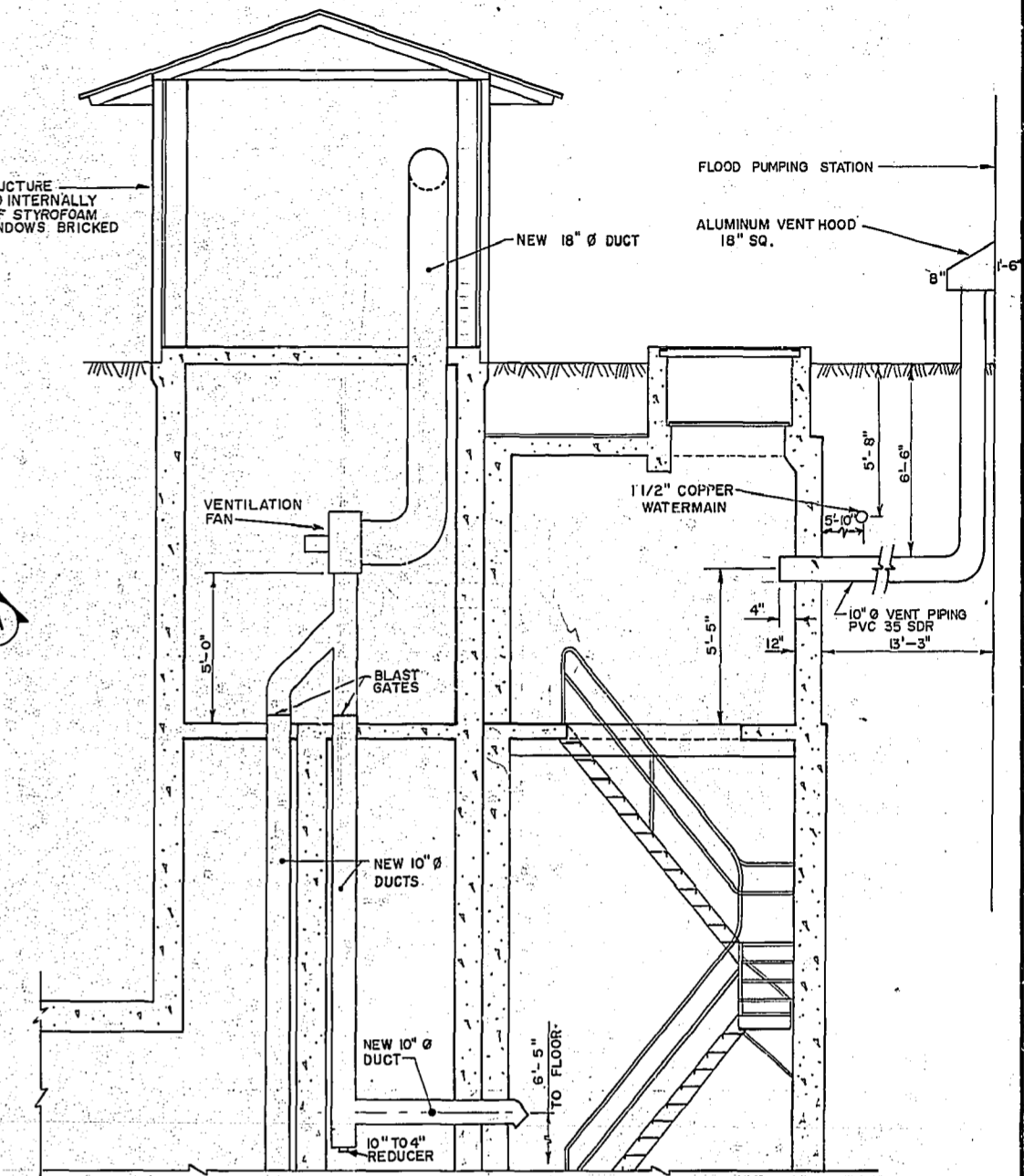
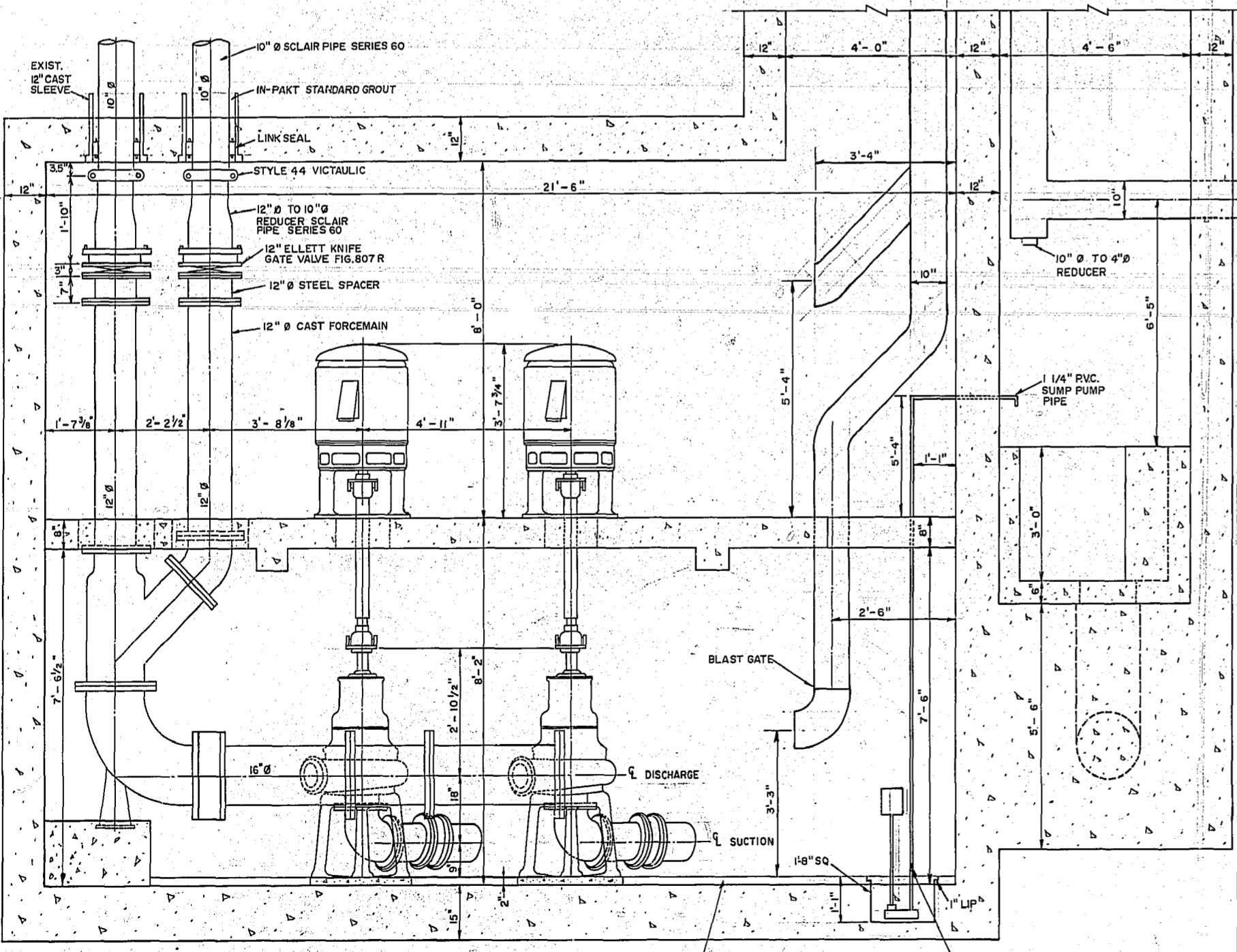


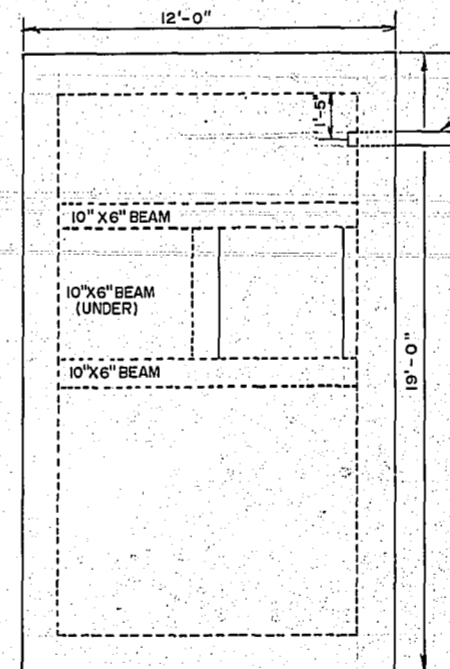
**PUMP CHAMBER FLOOR**  
SCALE: 1/2" = 1'-0"



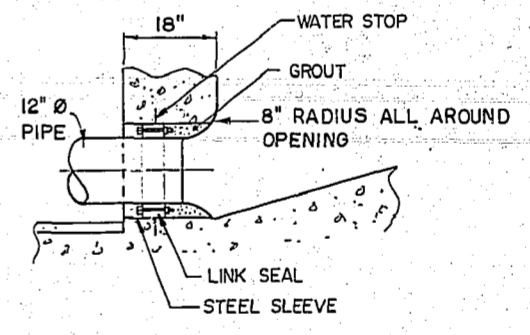
**SUPERSTRUCTURE**  
SCALE: 1/4" = 1'-0"



**SECTION A-A**  
SCALE: 1/2" = 1'-0"



**TOP VIEW COMMINUTOR CHAMBER**  
SCALE: 1/4" = 1'-0"



**SECTION C-C**  
SCALE: 1/2" = 1'-0"

**AS BUILT**  
D. S. S. *e.A. Sordowski* *MAJ 3/86*  
SURVEY ENGINEERING DATE

- NOTES**
- ALL VALVES WITH FLANGES ARE ASA. 125 LB. STD.
  - ALL CI. PIPES WITH FLANGES ARE ASA. 125 LB. STD.
  - FOR INFORMATION ON PUMPS, MOTORS & FANS SEE LIBRARY FILE P-41
  - ALL DUCT WORK GALVANIZED STEEL 26 GA.

For Electrical see drawing no. 41-FS-1-1

NO.	REVISIONS	DATE	APP.
1	REVISED TO AS BUILT	FEB 84	MD



**WORKS & OPERATIONS DIVISION**  
WATERWORKS, WASTE & DISPOSAL DEPARTMENT

DESIGNED BY: J.E. T.M.  
CHECKED BY: R.A.S.  
APPROVED BY: *R. M. Kelly* DATE: Aug 25/82



**JESSIE AVENUE PUMPING STATION**  
**INSTALLATION OF NEW PUMPS & PIPING**

RELEASED FOR CONSTRUCTION DATE: *Aug 27/82*  
SCALE: AS SHOWN DRAWING NO: 1060