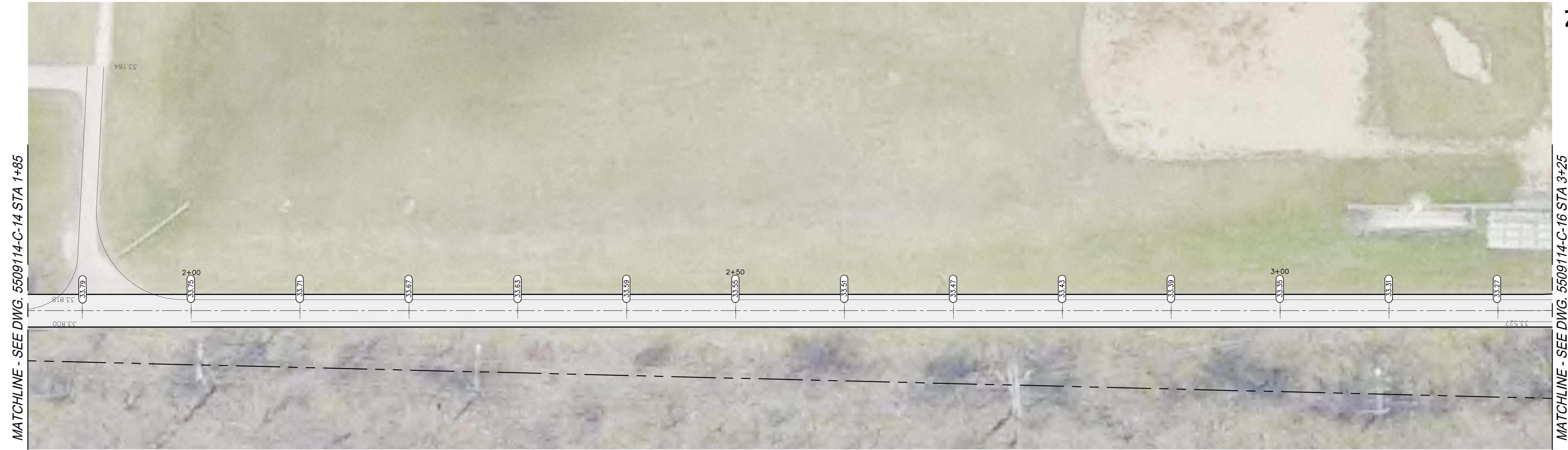
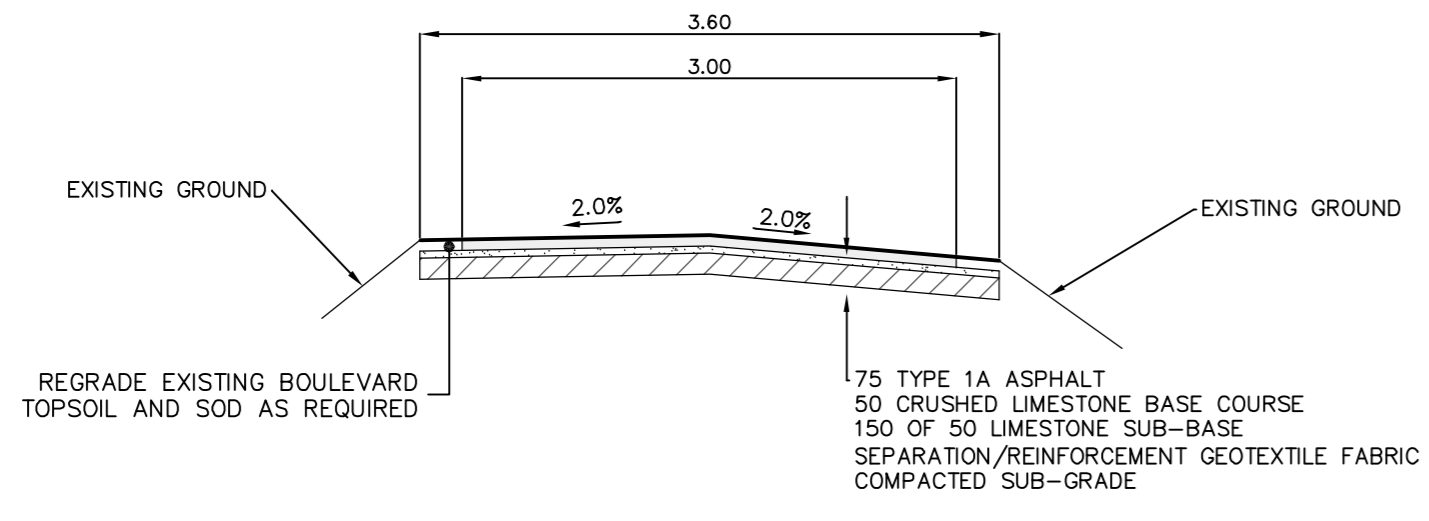


OMAND PARK MULT-USE PATH



MATCHLINE - SEE DWG. 5509114-C-14 STA 1+85

MATCHLINE - SEE DWG. 5509114-C-16 STA 3+25



TYPICAL CROSS SECTION  
SCALE N.T.S.

NOTES:

1. ALL WORK AND MATERIALS TO BE IN ACCORDANCE WITH THE LATEST REVISIONS OF THE CITY OF WINNIPEG STANDARD CONSTRUCTION SPECIFICATIONS.
2. CONTRACTOR TO VERIFY DEPTH OF UTILITIES PRIOR TO CONSTRUCTION.
3. LOCATION OF UNDERGROUND STRUCTURES AS SHOWN ARE BASED ON THE BEST INFORMATION AVAILABLE, BUT NO GUARANTEE IS GIVEN THAT ALL EXISTING UTILITIES ARE SHOWN OR THAT THE GIVEN LOCATIONS ARE EXACT. CONFIRMATION OF EXISTENCE AND EXACT LOCATION OF ALL SERVICES MUST BE OBTAINED FROM THE INDIVIDUAL UTILITIES BEFORE PROCEEDING WITH CONSTRUCTION.
4. EXCAVATED MATERIAL TO BE USED AS BACKFILL WHERE REQUIRED.
5. ALL SURFACES TO BE MAINTAINED OR RESTORED TO PREVIOUS CONDITION OR BETTER.



METRIC  
WHOLE NUMBERS INDICATE MILLIMETERS  
DECIMALIZED NUMBERS INDICATE METERS

NOTE:  
These design documents are prepared solely for the use by the party with whom the design professional has contracted for a service and there are no representations or warranties made by the design professional to any party with whom the design professional has not contracted for a service.

231.99	ELEVATION	(32.50)	◇	HYDRANT	---	EXISTING GROUND	---
○	WATER VALVE			150mm BARRIER CURB	---	PROPOSED CENTERLINE	---
□	MANHOLE			CONCRETE	---		
	CATCH BASIN			ASPHALT	---		
	MTS CABLE						
	LDS						
	WWS						
	WATER						
	PROPERTY LINE						
HP	HYDRO POLE						
●	HYDRO POLE WITH LIGHT						
---	EXISTING	---	---	---	---	---	---
	LEGEND-PLAN	PROPOSED	EXISTING	LEGEND-PLAN	PROPOSED	EXISTING	LEGEND-PROFILE

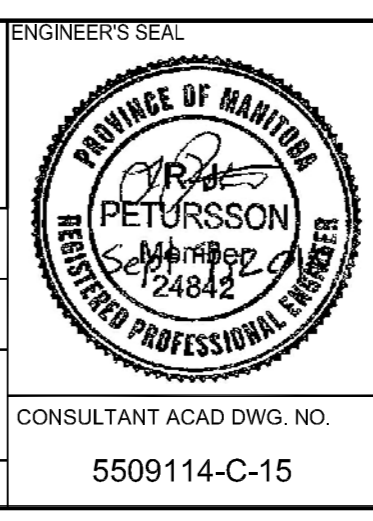
LOCATIONS APPROVED	
UNDERGROUND STRUCTURES	SIGNED BY: _____ DATE: _____
SUPV U/G STRUCTURES	DATE: _____
LOCATION OF UNDERGROUND STRUCTURES AS SHOWN ARE BASED ON THE BEST INFORMATION AVAILABLE BUT NO GUARANTEE IS GIVEN THAT ALL EXISTING UTILITIES ARE SHOWN OR THAT THE GIVEN LOCATIONS ARE EXACT. CONFIRMATION OF EXISTENCE AND EXACT LOCATION OF ALL SERVICES MUST BE OBTAINED FROM THE INDIVIDUAL UTILITIES BEFORE PROCEEDING	

G.B.M.	TBLT IN 3.7m CONC PILE, 3.7m N OF S.L. OF PORTAGE AVE. & 3.4m E OF LINE OF W.L. OF KING EDWARD ST.
ELEV.	236.437m
NO. REVISIONS	
4	-
3	ISSUED FOR TENDER 10.09.10 RP
2	ISSUED FOR REVIEW 10.09.10 RP
1	FOR REVIEW 01.09.10 -
NO. REVISIONS	DATE BY

**MMM GROUP**

DESIGNED BY: RP  
DRAWN BY: TR  
DATE: 10.09.10

CHECKED BY: -  
APPROVED BY: RP  
RELEASED FOR CONSTRUCTION: DATE



CITY OF WINNIPEG  
PUBLIC WORKS DEPARTMENT  
TRANSPORTATION ENGINEERING DIVISION

2010 ACTIVE TRANSPORTATION/  
INFRASTRUCTURE STIMULUS PROGRAM

OMAND PARK UPGRADES  
MULTI-USE PATH  
STA. 1+85.00 TO 3+25.00

**C-15**

SHEET 2 OF 4

See 10\_2010 - 3-26m  
P:\5509100-5509199\5509114-000\_2010 Active Transportation Infrastructure Stimulus Program\MMM Drawings\Omand Park Upgrades\5509114 Omand Park C-14-17\_100910.dwg -tab.C-15