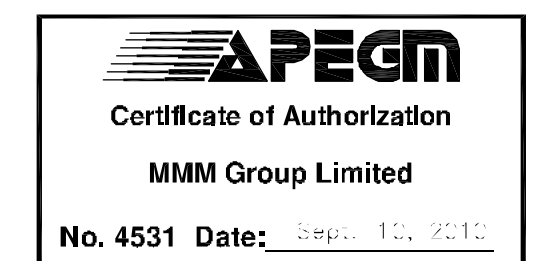


SECTION A-A
SCALE N.T.S.

NOTES:

1. ALL WORK AND MATERIALS TO BE IN ACCORDANCE WITH THE LATEST REVISIONS OF THE CITY OF WINNIPEG STANDARD CONSTRUCTION SPECIFICATIONS.
2. CONTRACTOR TO VERIFY DEPTH OF UTILITIES PRIOR TO CONSTRUCTION.
3. LOCATION OF UNDERGROUND STRUCTURES AS SHOWN ARE BASED ON THE BEST INFORMATION AVAILABLE, BUT NO GUARANTEE IS GIVEN THAT ALL EXISTING UTILITIES ARE SHOWN OR THAT THE GIVEN LOCATIONS ARE EXACT. CONFIRMATION OF EXISTENCE AND EXACT LOCATION OF ALL SERVICES MUST BE OBTAINED FROM THE INDIVIDUAL UTILITIES BEFORE PROCEEDING WITH CONSTRUCTION.
4. EXCAVATED MATERIAL TO BE USED AS BACKFILL WHERE REQUIRED.
5. ALL SURFACES TO BE MAINTAINED OR RESTORED TO PREVIOUS CONDITION OR BETTER.



METRIC
WHOLE NUMBERS INDICATE MILLIMETERS
DECIMALIZED NUMBERS INDICATE METERS

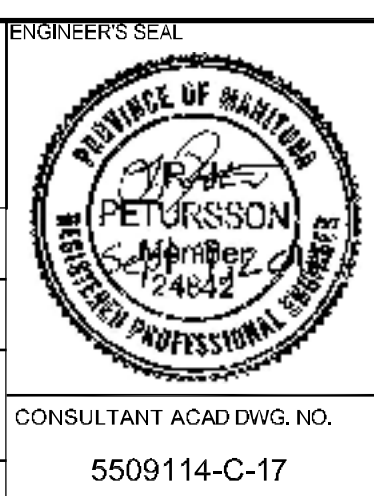
Note:
These design documents are prepared solely for the use by the party who whom the design professional was retained to provide and who will be responsible for any and all made by the design professional. In any party who whom the design professional was retained for a contract.

231.99	ELEVATION	(32.50)	HYDRANT	EXISTING GROUND	PROPOSED CENTERLINE
○	WATER VALVE		150mm BARRIER CURB		
□	MANHOLE		CONCRETE		
	CATCH BASIN		ASPHALT		
	MTS CABLE				
	LDS				
	WWS				
	WATER				
---	PROPERTY LINE				
HP	HYDRO POLE				
●	HYDRO POLE WITH LIGHT				
EXISTING	LEGEND-PLAN	PROPOSED	EXISTING	LEGEND-PLAN	PROPOSED
EXISTING	LEGEND-PROFILE	PROPOSED	EXISTING	LEGEND-PROFILE	PROPOSED

LOCATIONS APPROVED	
UNDERGROUND	STRUCTURES
SIGNED BY:	DATE:
SUPV U/G STRUCTURES	DATE

G.B.M.	1BLT IN 3.7m CONC PILE, 3.7m N OF S.L. OF PORTAGE AVE. & 3.4m E OF LINE OF W.L. OF KING EDWARD ST.	ELEV.	235.437m
4	-	-	-
3	ISSUED FOR TENDER	10.09.10	RP
2	ISSUED FOR REVIEW	10.09.10	RP
1	FOR REVIEW	01.09.10	-
NO. REVISIONS	DATE	BY	

DESIGNED BY		CHECKED BY	
RP			
DRAWN BY		APPROVED BY	
TR		RP	
HOR. SCALE	1:200	RELEASED FOR CONSTRUCTION	
VERTICAL	1:50	DATE	
DATE:	10.09.10	DATE	



CITY OF WINNIPEG
 PUBLIC WORKS DEPARTMENT
 TRANSPORTATION ENGINEERING DIVISION
 2010 ACTIVE TRANSPORTATION/
 INFRASTRUCTURE STIMULUS PROGRAM
 OMAND PARK UPGRADES
MULTI-USE PATH
 PORTAGE AVENUE SIDEWALK

C-17

SHEET 4 OF 4

Sep 10, 2010 - 3:31pm
 P:\509114-509199\509114-000 2010 Active Transportation Infrastructure Stimulus Program\MM Drawings\Omond Park Upgrades\509114 Omond Park C-14-17_100910.dwg - tab.C-17